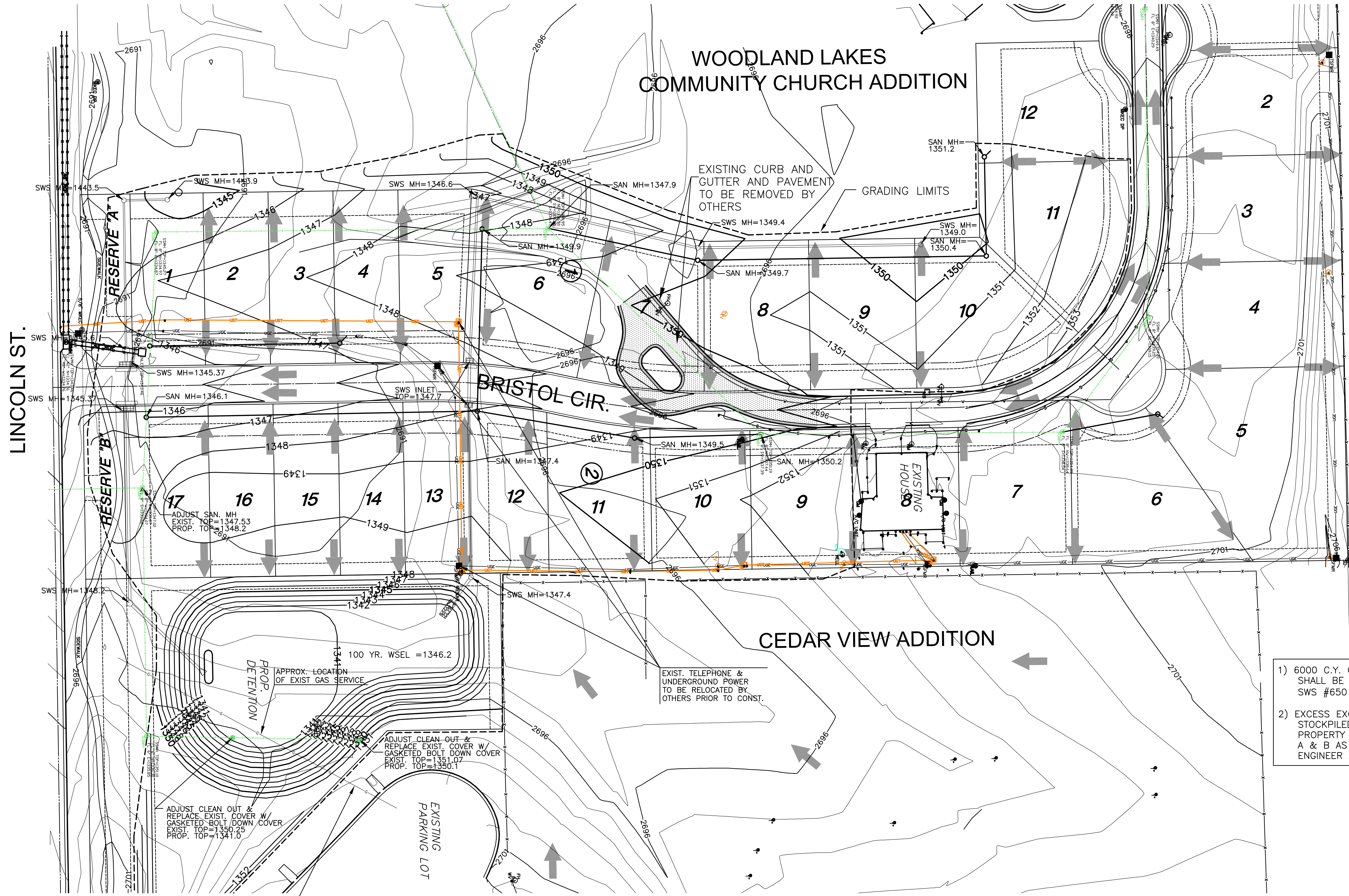


**GRADING PLANS FOR  
CEDAR VIEW VILLAGE ADDITION**



I-35

- 1) 6000 C.Y. OF EXCAVATION SHALL BE BID WITH THE SWS #650 PROJECT.
- 2) EXCESS EXCAVATION SHALL BE STOCKPILED ALONG THE WEST PROPERTY LINE AND IN RESERVES A & B AS DIRECTED BY THE ENGINEER AND OWNER.

**GRADING PLAN**  
SHEET TITLE  
468-84463  
PROJECT NUMBER

SRS  
DESIGN BY  
TKL  
DRAWN BY  
DFL  
CHECKED BY

ISSUED  
August 08  
REVISED

SHEET NO.  
**3 of 11**

CONTRACTOR SHALL COORDINATE WITH AQUILA FOR GAS SERVICE RELOCATION AS REQUIRED

EXIST. TELEPHONE & UNDERGROUND POWER TO BE RELOCATED BY OTHERS PRIOR TO CONST.

THE CONTRACTOR SHALL COORDINATE WITH THE SCHOOL'S IRRIGATION CONTRACTOR FOR REQUIRED REPAIRS. COST SHALL BE SUBSIDIARY TO OTHER ITEMS BID.

