

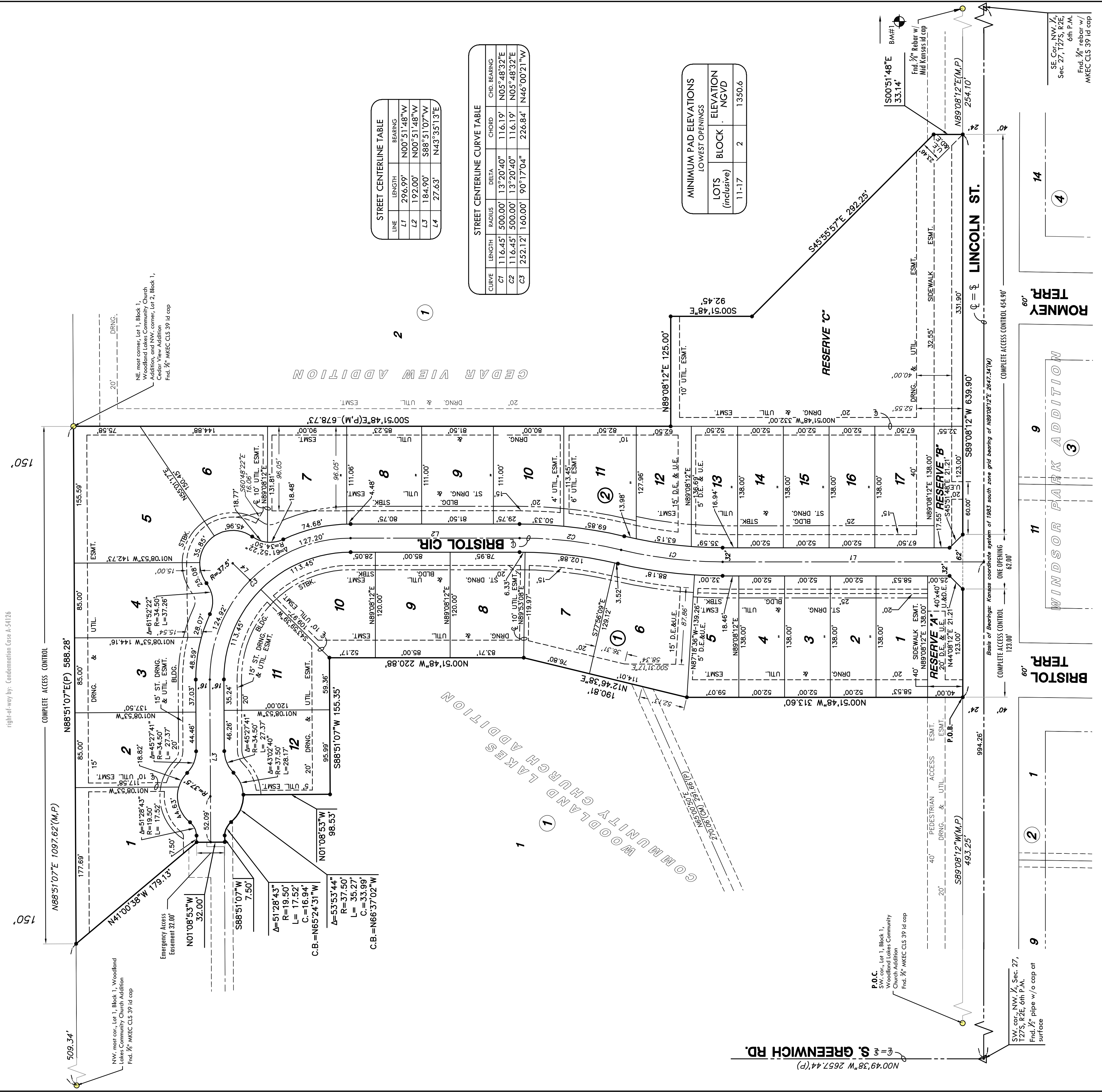
FINAL PLAT

CEDAR VIEW VILLAGE ADDITION

AN ADDITION TO WICHITA, SEDGWICK COUNTY, KANSAS

1-35

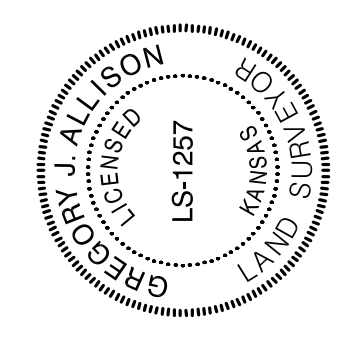
Kansas Turnpike Authority
right-of-way by: Condominium Case #-51176



LINE	LENGTH	BEARING
L1	296.99'	N00°51'48"W
L2	192.00'	N00°51'48"W
L3	184.90'	S88°51'07"W
L4	27.63'	N43°33'13"E

CURVE	LENGTH	RADIUS	DELTA	CHD. BEARING
C1	116.45'	500.00'	13°20'40"	N05°48'32"E
C2	116.45'	500.00'	13°20'40"	N05°48'32"E
C3	252.12'	1600.00'	90°17'04"	N46°00'21"W

LOTS (inclusive)	BLOCK	ELEVATION
11-17	2	1350.6

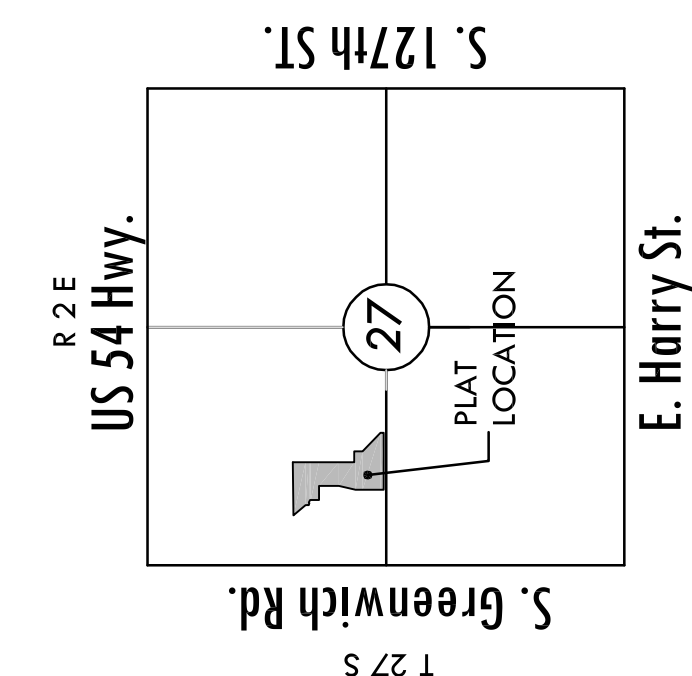


LEGEND

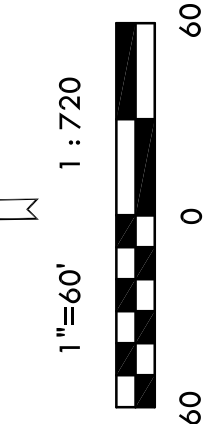
- Date of Survey: May, 2007
- △ = Section Corner Monument Found
 - = Found Survey Monument
 - See annotation
 - = Set 5/8" Bar w/ MKEC
 - (with M) = Measured
 - (P) = Platted
 - (D) = Described or record description
 - ⊥ = Section line
 - L7 = Line dimensions in table above
 - CT = Curve dimensions in table above

BENCH MARK

BM#1
Square cut on east end of north headwall of
RCB 31" cast and 11 feet north of the center of
Sec. 27, T27S, R2E,
Elev. = 1346.58 NGVD 29



VICINITY MAP



Basis of Bearing: Kansas coordinate system of 1983 south zone grid bearing of N89°08'12"E along the S. Line of SW. 1/4, Sec. 27, T27S, R2E, 6th P.M.

MKEC
ENGINEERING
CONSULTANTS, INC.
411 N. WEBB ROAD
WICHITA, K.S. 67206
316-684-9600