

**GENERAL NOTES:**

- Contractor will be required to provide notice to utility companies a minimum of forty-eight (48) hours prior to any excavation, as follows:  
 Kansas One-Call 687-2470  
 The Contractor must notify the following in case of an emergency:  
 Cox Communications 262-4270  
 Kansas Gas Service 1-888-482-4950  
 Westar Energy 383-8650  
 Aquila Energy 1-800-303-0357  
 SBC 268-2245  
 City of Wichita Water Dept. 268-4563  
 City of Wichita Sewer Maint. 268-4024  
 City of Wichita Storm Sewer Maint. 268-4090  
 City of Wichita Traffic Maint. 268-4034  
 Conoco Phillips Pipeline Co. 1-877-267-2290  
 Southern Star Pipeline Co. 529-6600  
 Kinder-Morgan Pipeline Co. 1-888-844-5658
- Utility service lines, poles, valve boxes, meters, and etcetera are to be adjusted as necessary by others prior to construction unless the plans specifically call for their adjustment by the Contractor or unless the plans specifically identify a utility to be adjusted by its owner during construction. Existing utilities and their location, as shown on the plans, represent the best information obtainable for design. The Contractor will be required to work around existing utilities within the right-of-way which do not conflict with proposed construction.
- Rubble from the removal of miscellaneous structures and excess excavation which is to be wasted shall be disposed of on sites to be provided by the Contractor. These sites shall be approved by the Engineer as to suitability, appearance and site location. Locations, in the opinion of the Engineer, that will leave an unsightly appearance will not be approved. All disposal sites must be approved by the Kansas Department of Health and Environment. Material either stockpiled or disposed of in a flood plain would require a Kansas State Board of Agriculture permit. Any material dumped in waters of the United States or wetlands is subject to U.S. Corps of Engineers permitting regulations. Any material buried or stockpiled beyond approved construction limits would require additional archaeological investigations unless buried in a previously approved borrow location.
- Trees and shrubs in public right-of-way which are in direct conflict with proposed new construction shall be removed by the Contractor with the Engineer's approval. Trees and shrubs which are not in direct conflict with proposed new construction shall be saved and protected from damage.
- The Contractor shall give all property owners and/or tenants of developed property abutting the construction of this project a minimum of ten (10) days notice prior to start of construction.
- The Contractor shall be responsible for preserving property irons. The Contractor will be required to re-establish any property irons which are damaged or destroyed by his construction operations. Such irons shall be re-established by a licensed land surveyor in accordance with state laws.
- All excess excavation shall remain on-site and shall be spread evenly on the lots outside of easements & R/W's
- All existing and proposed erosion control measures including silt fencing, erosion control mat, straw bales, inlet barriers, and const. entrance shall be maintained throughout construction by the contractor and until project is accepted by the City of Wichita. The on-site engineer shall complete weekly reports on the status of erosion control measures. The contractor shall be required to comply with maintenance and/or replacement of erosion control measures as determined by the on-site engineer until project is accepted by City of Wichita.
- All areas disturbed during construction shall be seeded at 300 lbs./acre with Rye Grass immediately following construction in that area. Contractor shall prepare ground per City Specifications.
- A saw cut of at least one-half the depth of existing surface courses or one-fourth the depth of the existing total pavement thickness shall be provided at locations where proposed construction abuts the existing surface course or pavement for which partial removal of that surface or pavement is required. Sawed joint to facilitate removal within three (3) feet of existing joints will not be permitted and for such instances the limits of removal shall extend to the existing joint. Such saw cuts will not be paid for directly and this cost shall be considered as subsidiary to the removal of the surface or pavement.
- The contractor shall adjust valve boxes as necessary to match proposed grade. Cost to be included in bid item, "Site Clearing & Restoration."
- Earthwork Cross Sections and Easement Grading Quantities reflect final as-built Mass Grading Topo as of 8/20/08. Contractor of this project shall satisfy himself with the earthwork quantities as bid for "Excavation" and "Easement Grading" prior to bidding. No additional payments or change orders for earthwork will be accepted.
- The developer for this project is Paul E. Kelsey, and may be reached at (316) 722-1077

Street Paving for N. LIBERTY ST. / W. HUNTERS VIEW / W. NANTUCKET with Incidental Storm Water Sewer Improvements

to serve

**CRYSTAL GARDENS ADDITION**

- N. Liberty St.: From the south line of the plat, north to and including the cul-de-sac
- W. Hunters View St.: From the east side of the cul-de-sac, east, north, west and south to the south line of Lot 29, Block A
- W. Nantucket St.: From the west line of Lot 29, Block A, south and east to the west line of the cul-de-sac

CITY OF WICHITA, KANSAS

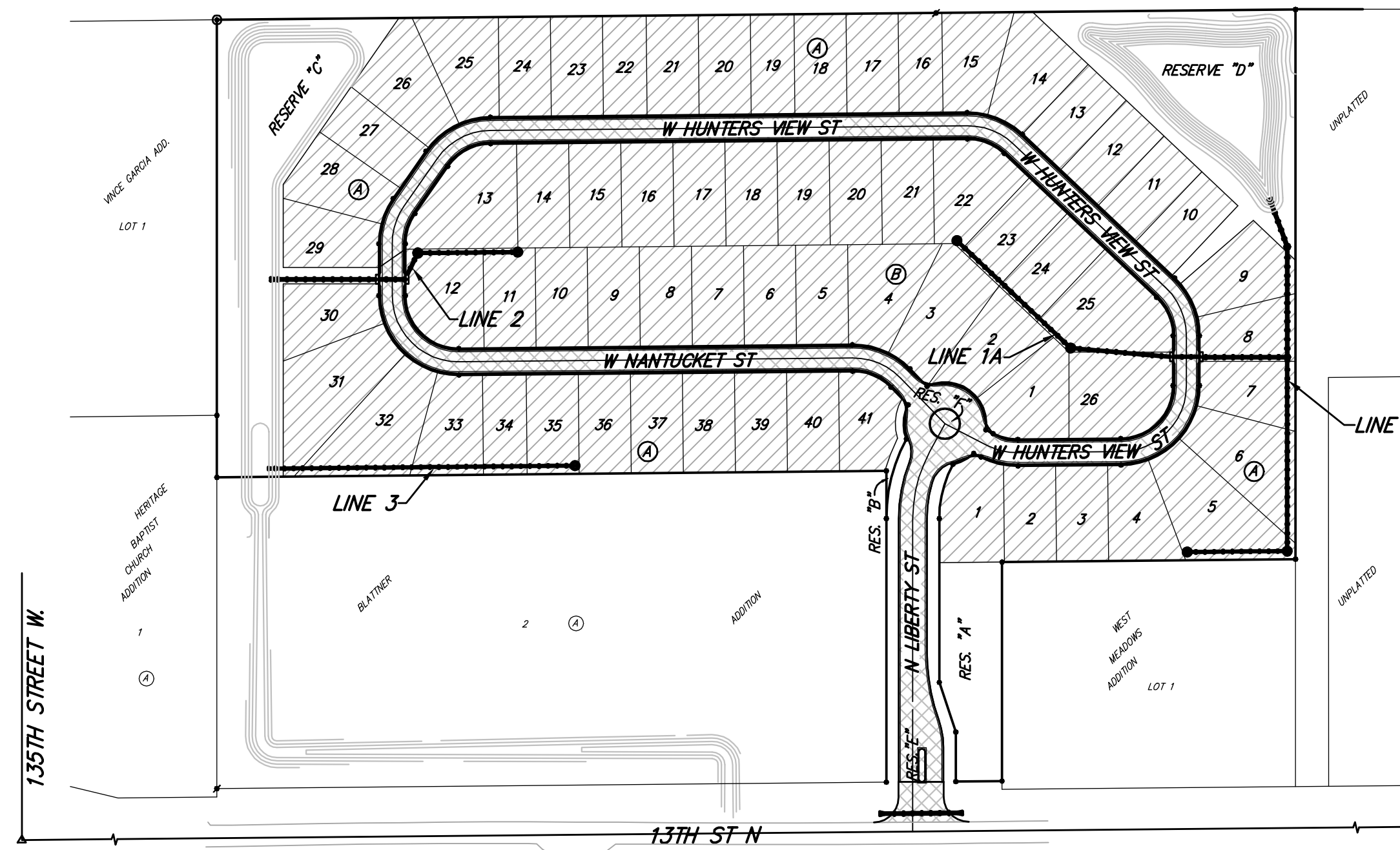
James L. Armour, P.E. City Engineer

Project Number

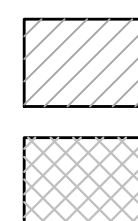
472-84606

O.C.A. Number

766220



Benefit District  
Proposed Streets



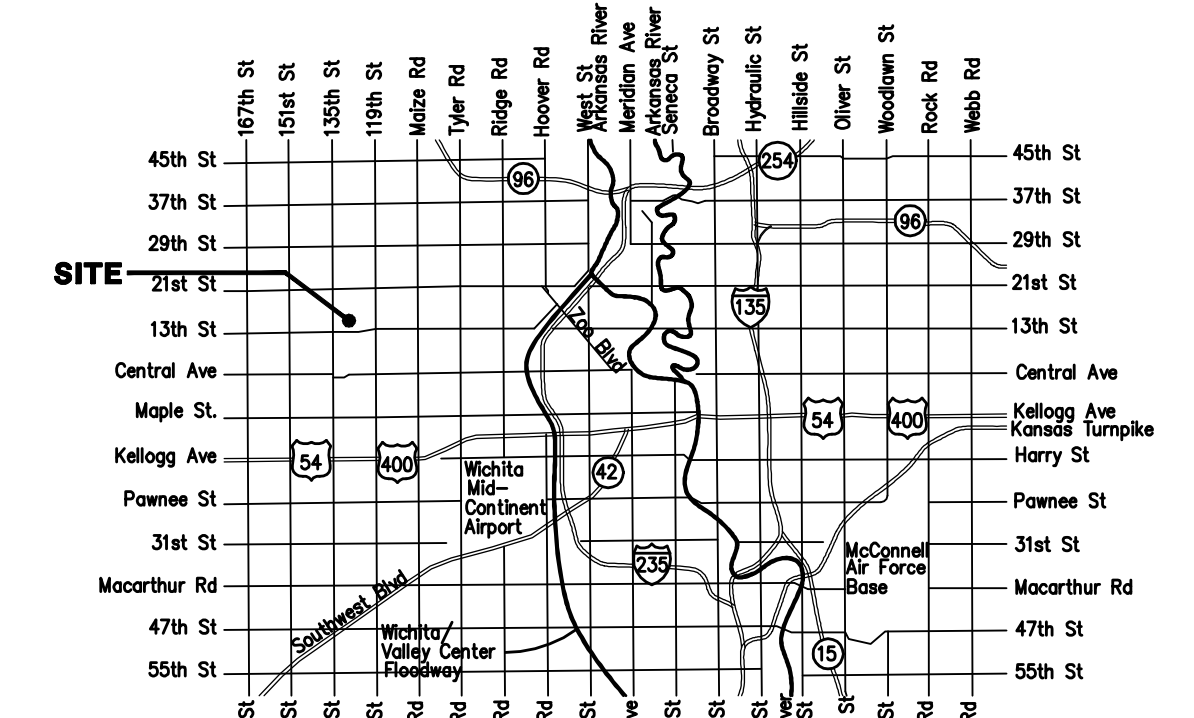
EARTH WORK TOTALS (UNADJUSTED)	Excavation	Compacted Fill	Loose Fill
TOTAL PROJECT LENGTH	1,702	-	929
2,866 L.F. = 0.55 Miles			

**Benchmarks**

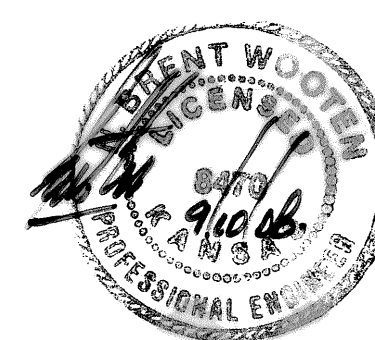
"□" Cut On Top of Curb, West Side of Forestview, East of Fire Hydrant, and Along Easterly Extension of the South Line of Lot 2, Block A, Liberty Park 2nd Addition.  
 Elev. = 1347.62 NGVD29  
 City of Wichita Benchmark Southwest Corner of 13th St N and 135th St W 30' South and 35' West Intersection. East Side of Concrete Base for Highline Pole.  
 Elev. = 1355.65 NGVD29

**Sheet Index**

Title Sheet	1
35' Pavement Detail	2
29' Pavement Detail	3
Sign Detail	4
Entrance Detail	5
N. Liberty St.	6
W. Hunters View St./W. Nantucket St.	7-11
Line 1	12
Line 1A	13
Line 2	14
Line 3	15
Std. Type 1A Double Inlet Detail	16
Shallow Manhole Detail	17
Ring & Cover Detail	18
Special Yard Inlet Detail	19
Headwall Detail	20
Erosion Control/Esmt. Grading Plan	21
Erosion Control BMP Details	22-25
Coordinate Sheet	26
Street Cross Sections	27-33
Copy of Plat	34



**Vicinity Map**



Baughman Company, P.A. 315 Ella St. Wichita, KS 67211 P 316-262-7271 F 316-262-0149  
 ENGINEERING | SURVEYING | PLANNING | LANDSCAPE ARCHITECTURE