

**Benchmark:**  
 "□" Cut On Top of Curb, West Side of Forestview, East of Fire Hydrant, and Along Easterly Extension of the South Line of Lot 2, Block A, Liberty Park 2nd Addition.  
 Elev. = 1347.62 NGVD29

City of Wichita Benchmark Southwest Corner of 13th ST N and 135th ST W 30' South and 35' West Intersection. East Side of Concrete Base for Highline Pole.  
 Elev. = 1355.65 NGVD29

Curve #2  
 Curve Data Based on Centerline  
 Rad. = 80' Delta = 27° 43' 09" Tangent = 19.74'  
 Arc = 38.70' L.C. = 38.33' Def/Ft. = 21.48773 Min.

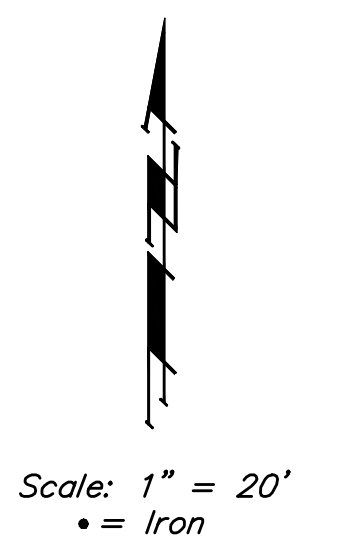
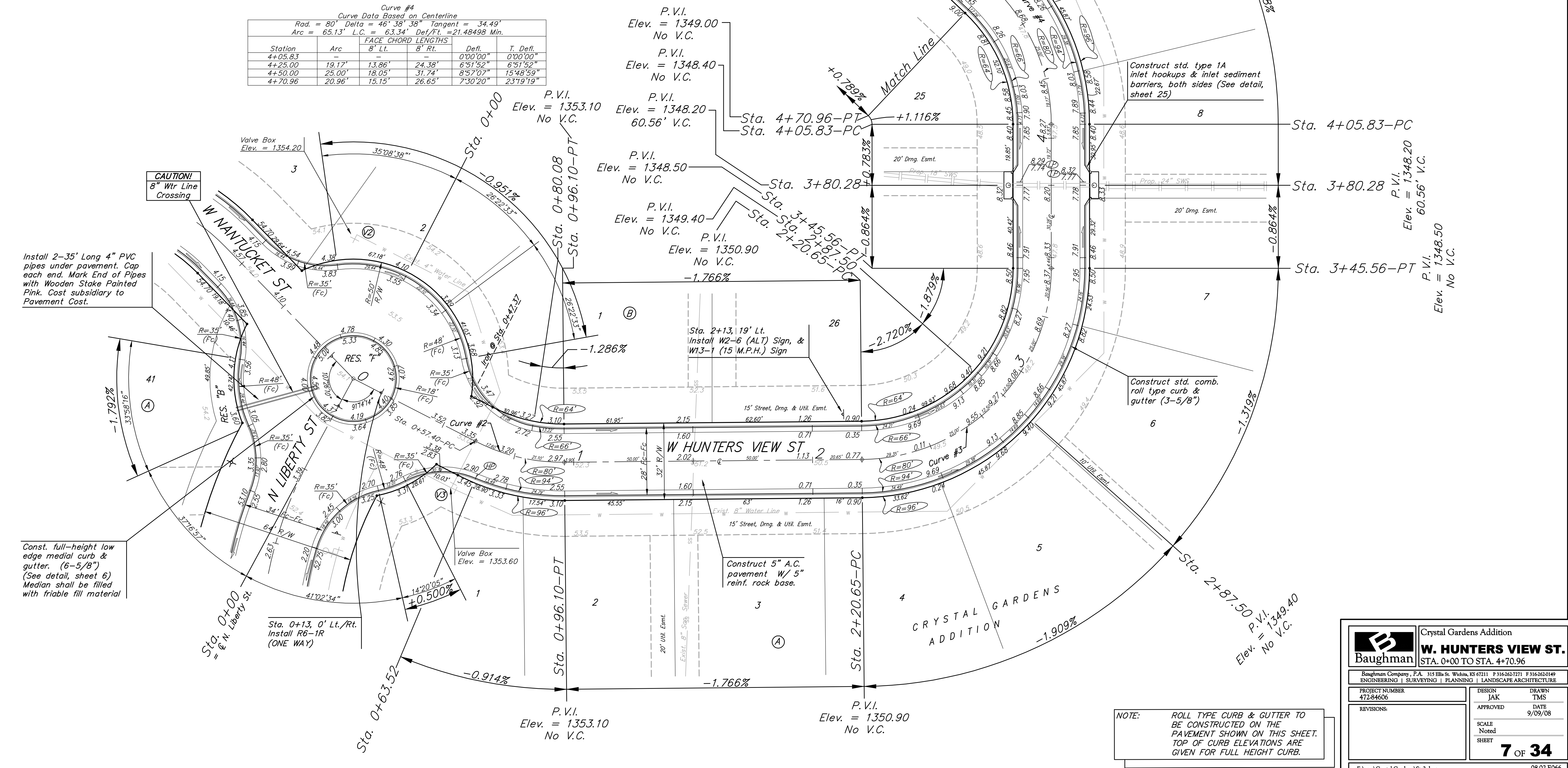
Station	Arc	FACE CHORD LENGTHS		Defl.	T. Defl.
		8' Lt.	8' Rt.		
0+57.40	-	-	-	0'00"00"	0'00"00"
0+63.52	6.12'	4.44'	7.80'	2'11"30"	2'11"30"
0+75.00	11.48'	8.32'	14.63'	4'06"41"	6'18"11"
0+80.08	5.08'	3.68'	6.48'	1'49"09"	8'07"20"
0+96.10	16.02'	11.60'	20.39'	5'44"14"	13'51"34"

Curve #3  
 Curve Data Based on Centerline  
 Rad. = 80' Delta = 89° 27' 41" Tangent = 79.25'  
 Arc = 124.91' L.C. = 112.60' Def/Ft. = 21.48620 Min.

Station	Arc	FACE CHORD LENGTHS		Defl.	T. Defl.
		8' Lt.	8' Rt.		
2+20.65	-	-	-	0'00"00"	0'00"00"
2+25.00	4.35'	3.15'	5.55'	1'33"28"	1'33"28"
2+50.00	25.00'	18.05'	31.75'	8'57"09"	10'30"37"
2+75.00	25.00'	18.05'	31.75'	8'57"10"	19'27"47"
3+00.00	25.00'	18.05'	31.75'	8'57"09"	28'24"56"
3+25.00	25.00'	18.05'	31.75'	8'57"09"	37'22"05"
3+45.56	20.56'	14.87'	26.14'	7'21"46"	44'43"51"

Curve #4  
 Curve Data Based on Centerline  
 Rad. = 80' Delta = 46° 38' 38" Tangent = 34.49'  
 Arc = 65.13' L.C. = 63.34' Def/Ft. = 21.48498 Min.

Station	Arc	FACE CHORD LENGTHS		Defl.	T. Defl.
		8' Lt.	8' Rt.		
4+05.83	-	-	-	0'00"00"	0'00"00"
4+25.00	19.17'	13.86'	24.38'	6'51"52"	6'51"52"
4+50.00	25.00'	18.05'	31.74'	8'57"07"	15'48"59"
4+70.96	20.96'	15.15'	26.65'	7'30"20"	23'19"19"



**CAUTION!**  
 8" Wtr Line Crossing

Install 2-35' Long 4" PVC pipes under pavement. Cap each end. Mark End of Pipes with Wooden Stake Painted Pink. Cost subsidiary to Pavement Cost.

Const. full-height low edge medial curb & gutter. (6-5/8") (See detail, sheet 6) Median shall be filled with friable fill material

**NOTE:**  
 ROLL TYPE CURB & GUTTER TO BE CONSTRUCTED ON THE PAVEMENT SHOWN ON THIS SHEET. TOP OF CURB ELEVATIONS ARE GIVEN FOR FULL HEIGHT CURB.

		Crystal Gardens Addition	
		<b>W. HUNTERS VIEW ST.</b> STA. 0+00 TO STA. 4+70.96	
<small>Baughman Company, P.A. 315 Ellis St. Wichita, KS 67211 P 316-262-7271 F 316-262-0149          ENGINEERING   SURVEYING   PLANNING   LANDSCAPE ARCHITECTURE</small>			
PROJECT NUMBER 472-84606	DESIGN JAK	DRAWN TMS	
REVISIONS:	APPROVED	DATE	9/09/08
	SCALE Noted	SHEET	
		<b>7 OF 34</b>	

E:\Veng\Crystal Gardens\Str2.dwg 08-02-E066