

BENCHMARKS:
 Cross Cut In North End of Concrete Valley Gutter, Nickelton & Nickelton Ct., Adjacent to SW Cor. Lot 6, Block C, Silverton Addition.
 Elev. = 1361.49 NGVD 29

Cross Cut In Concrete, \bar{L} of Curb In Front of Catch Basin, Adjacent to SW Cor. Lot 6, Block B, Silverton Addition.
 Elev. = 1360.34 NGVD 29

"□" Cut In SW Cor of Curb Inlet Top, Adjacent to NE Cor Lot 6, Block B, Copper Gate North Addition.
 Elev. = 1361.77 NGVD 29

Existing Trees shall Remain and be Protected from Damage.

CAUTION!
 8" San. Sewer Crossing

CAUTION!
 8" Wtr Line Crossing

Sta. 1+04.4, Line 1A
 Construct std. type 1A double curb inlet (10'x3')
 Top Elev. = 1348.30

Sta. 1+39.7, Line 1A
 Construct std. type 1A double curb inlet (10'x3')
 Top Elev. = 1348.30

Sta. 1+04.4 to Sta. 1+39.7
 Install 35.3 L.F. flowable fill per City specs.

Sta. 2+62.5, Line 1A
 Construct special yard inlet.
 Top Elev. = 1348.20

Install hay bale sediment barrier per detail, sheet 23.

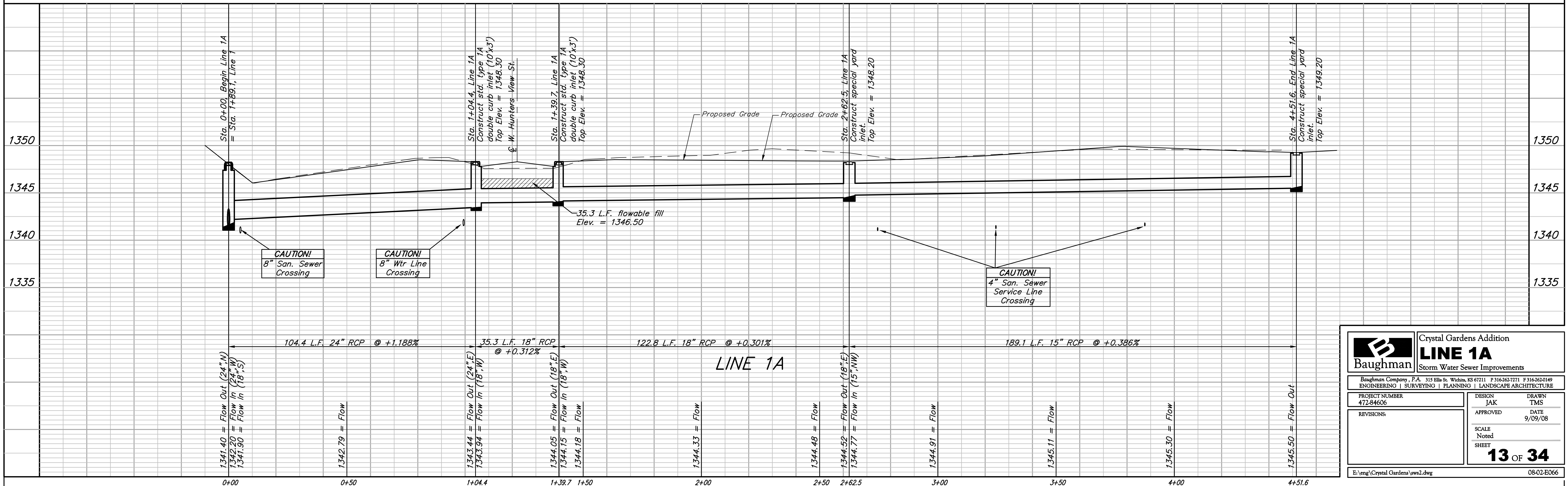
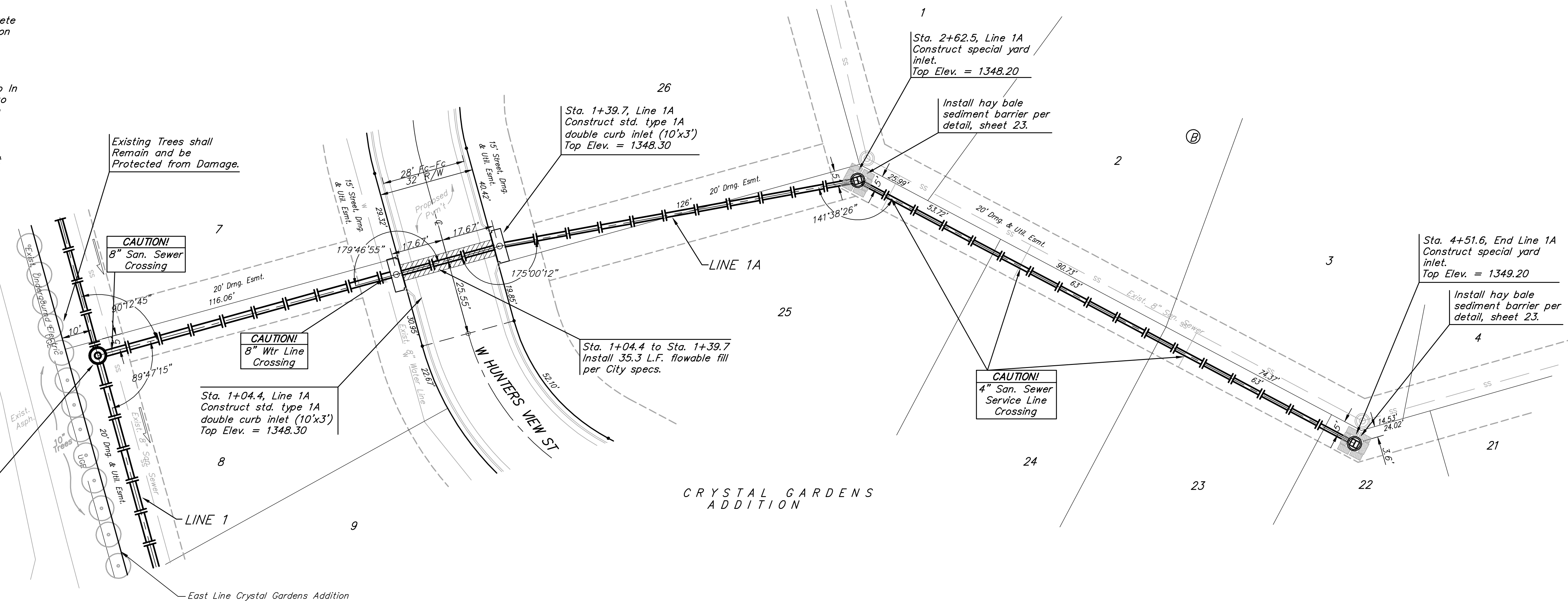
CAUTION!
 4" San. Sewer Service Line Crossing

Sta. 4+51.6, End Line 1A
 Construct special yard inlet.
 Top Elev. = 1349.20

Install hay bale sediment barrier per detail, sheet 23.

Scale: 1" = 20' Horizontal
 1" = 5' Vertical
 • = Iron

Sta. 0+00, Begin Line 1A = Sta. 1+89.1, Line 1



		Crystal Gardens Addition	
		LINE 1A	
Storm Water Sewer Improvements		<small>Baughman Company, P.A. 315 Ellis St. Wichita, KS 67211 P 316-262-7271 F 316-262-0149 ENGINEERING SURVEYING PLANNING LANDSCAPE ARCHITECTURE</small>	
PROJECT NUMBER 472-84606	DESIGN JAK	DRAWN TMS	
REVISIONS:	APPROVED	DATE 9/09/08	
	SCALE Noted	SHEET	
		13 OF 34	
E:\eng\Crystal Gardens\www2.dwg		08-02-ED066	