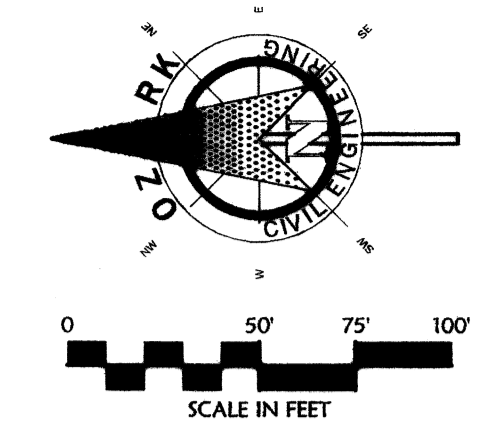
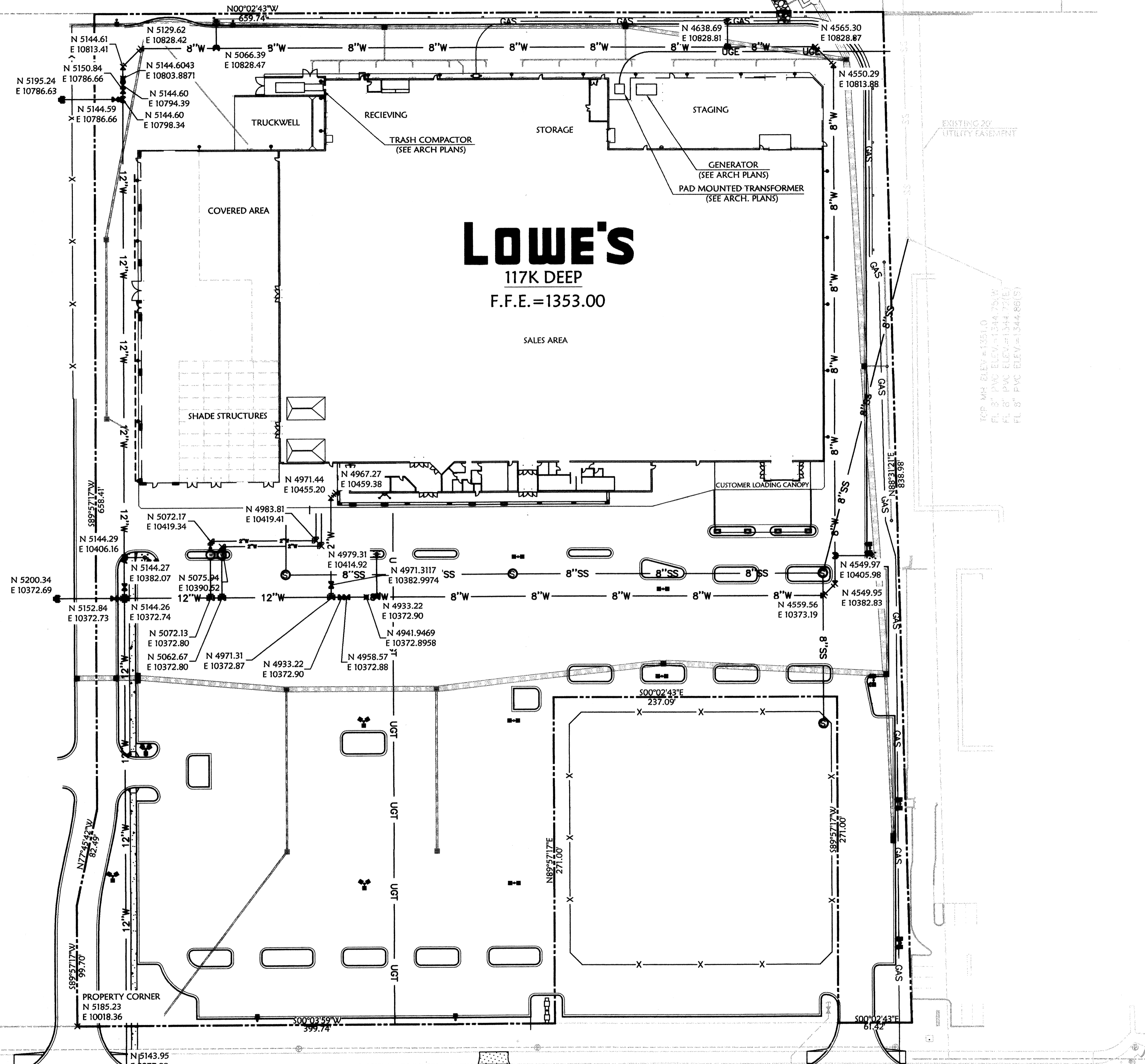
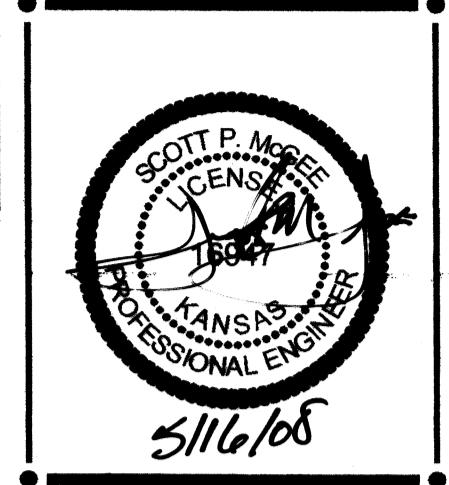


3" W 1316.43'



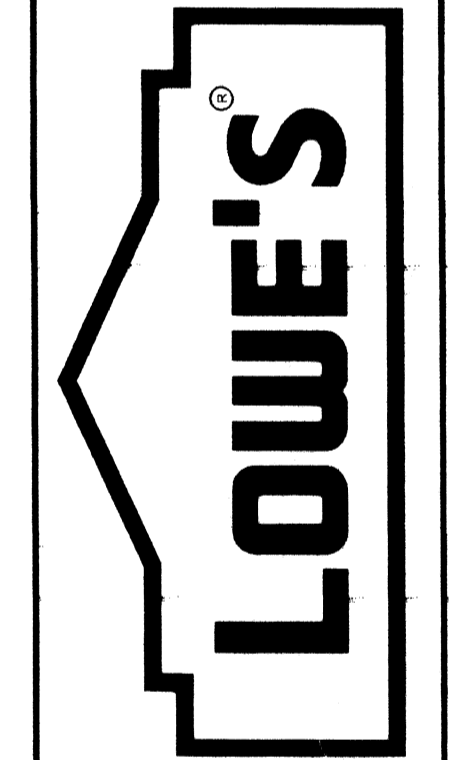
UTILITY PROPOSED FEATURES	
---	BOUNDARY LINE
---	RIGHT OF WAY LINE
---	EASEMENT LINE
---	CONCRETE CURB AND GUTTER
X	FENCE
---	GUARD RAIL
---	RETAINING WALL
---	STORM DRAIN (SEE GRADING PLAN FOR SIZE)
---	SANITARY SEWER SERVICE
---	WATER SERVICE
---	UNDERGROUND ELECTRIC SERVICE
---	UNDERGROUND TELEPHONE SERVICE
---	OVERHEAD ELECTRIC SERVICE
---	OVERHEAD TELEPHONE SERVICE
---	FIBER OPTIC CABLE SERVICE
---	GAS SERVICE
---	DROP INLETS (SEE GRADING PLAN FOR TYPE)

REVISIONS	
DATE	DESCRIPTION



Clark
Civil Engineering Inc.
Bentonville • Kansas City • Austin

LOWE'S HOME CENTERS, INC.
1005 CURTIS BRIDGE ROAD
REC DOCK
WILKESBORO, NC 28697
336.658.4000 (V) 336.658.3257 (F)



WATER LINE FITTINGS
NORTHING & EASTING PLAN
LOWE'S OF
N.W. WICHITA
MAIZE RD. & CENTRAL PARK ST. WICHITA, KS.
PROJECT No. 04-0460 DRAWN BY JJC CHECKED BY: SK

ORIGINAL	ISSUE DATE:
PERMIT SET	ISSUE DATE:
CONSTRUCTION SET	ISSUE DATE: 8-17-07
DRAWING NUMBER: 9.1	

BENCHMARK
City of Wichita Disc on the northwest corner of 29th St. N. and Maize Rd.
Elevation = 1349.32 (M.S.L.)
Elevation = 161.92 (City Datum)