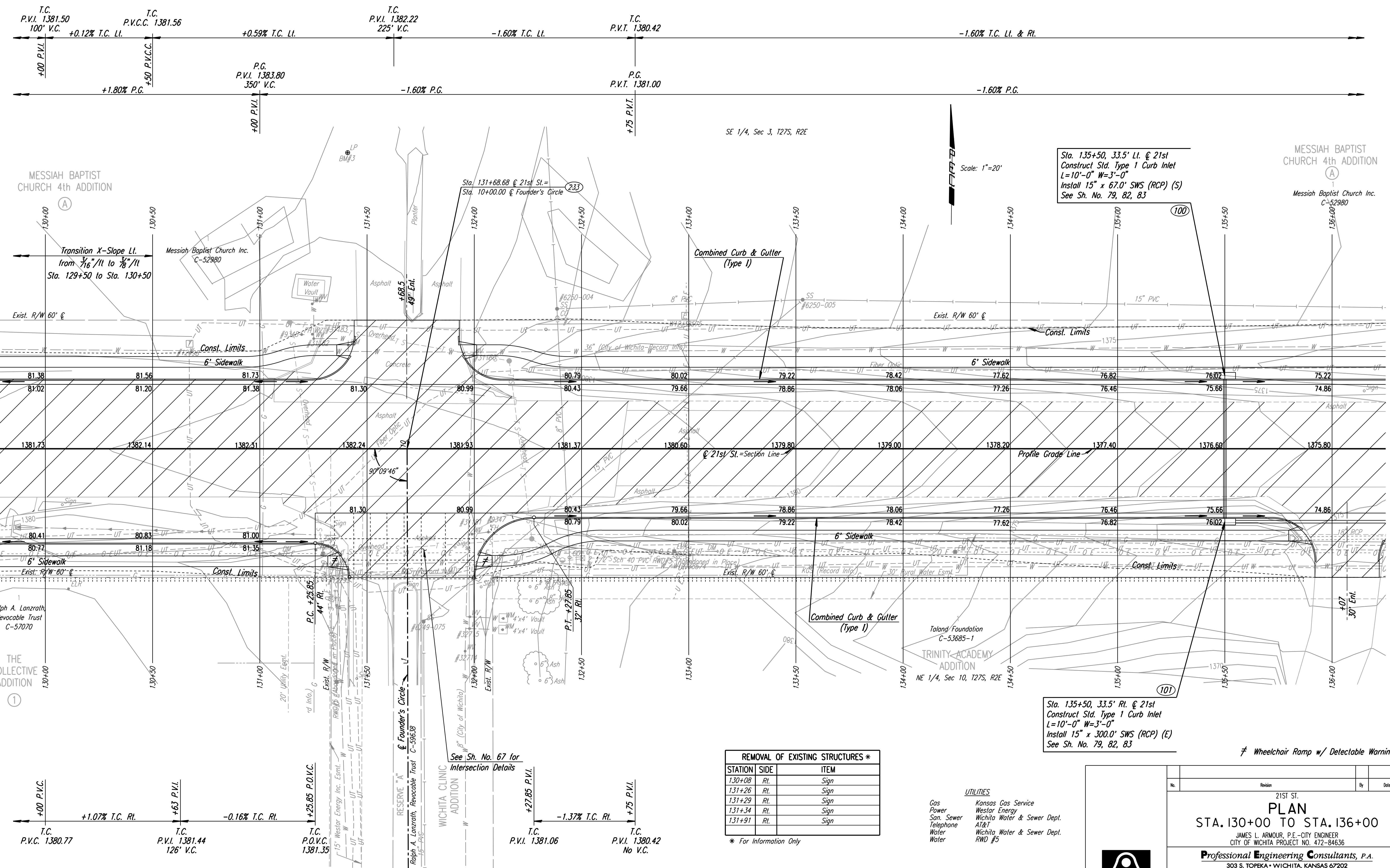


DSNR: JPS OPER: DRP SCALE: 1"=20'
 I:\2001\01616\PLAN\BDR130.DGN 5-12-2004 14:36:46 LAST REV: 5-19-2008 BY: svb



Sta. 135+50, 33.5' Lt. @ 21st
 Construct Std. Type 1 Curb Inlet
 L=10'-0" W=3'-0"
 Install 15" x 67.0' SWS (RCP) (S)
 See Sh. No. 79, 82, 83

Sta. 135+50, 33.5' Rt. @ 21st
 Construct Std. Type 1 Curb Inlet
 L=10'-0" W=3'-0"
 Install 15" x 300.0' SWS (RCP) (E)
 See Sh. No. 79, 82, 83

REMOVAL OF EXISTING STRUCTURES *

STATION	SIDE	ITEM
130+08	Rt.	Sign
131+26	Rt.	Sign
131+29	Rt.	Sign
131+34	Rt.	Sign
131+91	Rt.	Sign

* For Information Only

- UTILITIES
- Gas: Kansas Gas Service
 - Power: Westar Energy
 - San. Sewer: Wichita Water & Sewer Dept.
 - Telephone: AT&T
 - Water: Wichita Water & Sewer Dept.
- RWD #5

≠ Wheelchair Ramp w/ Detectable Warning

BM #3 Chis. "a" S side Top Conc. light base, 1st light
 N of 21st St. N, in Messiah Baptist Church Dr.
 138.09' Lt. Sta. 131+40.96 Elev. 1385.66

21ST ST.
PLAN
 STA. 130+00 TO STA. 136+00

JAMES L. ARMOUR, P.E. - CITY ENGINEER
 CITY OF WICHITA PROJECT NO. 472-84636

Professional Engineering Consultants, P.A.
 303 S. TOPEKA • WICHITA, KANSAS 67202
 316-262-2691 • FAX 316-262-3003

Designed by: JPS Job No.: 01616
 Drawn by: SVB Date: August, 2008 SH: 6 of 282