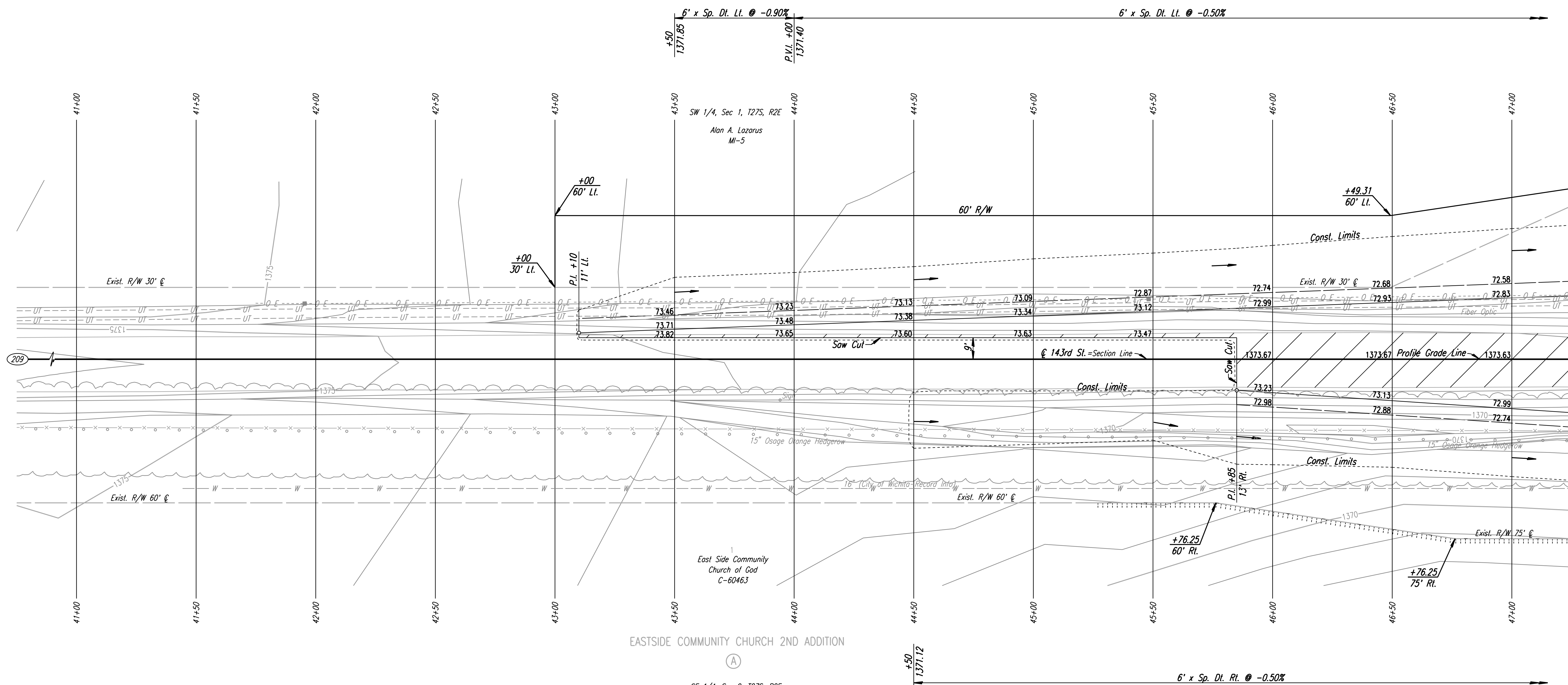
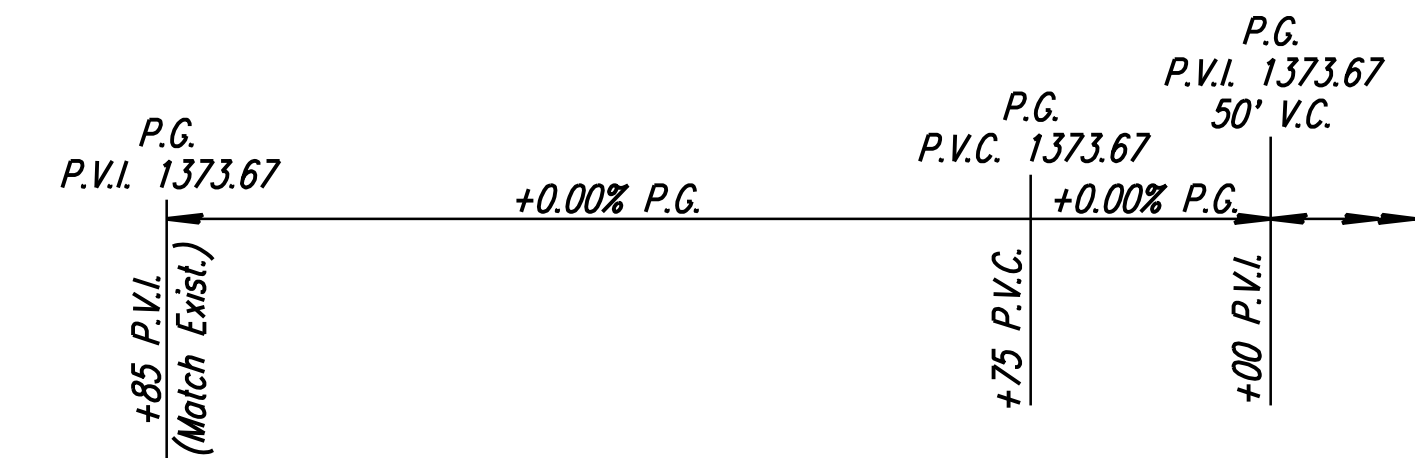


- W 1/4 Cor., Sec. 1, T27S, R2E (209)
1. Found 3/4" Bar, ± 6" Below Surface
  2. Center Travel Way 143rd St.
  3. Hedge Row E & W
  4. 3 Nails in N Face of Power Pole 23.73' E
  5. Bent 60d Nail in W Face of 6" Hedge Tree 42.30' NE
  6. 3 Nails in S Face of Fence Corner Post 30.70' W

Scale: 1"=20'



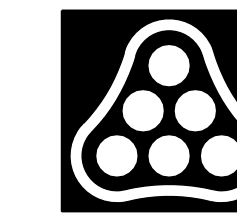
EASTSIDE COMMUNITY CHURCH 2ND ADDITION

SE 1/4, Sec 2, T27S, R2E

REMOVAL OF EXISTING STRUCTURES *		
STATION	SIDE	ITEM
44+48	Rt.	252 L.F. Barbed Wire Fence

\* For Information Only

**UTILITIES**  
 Power Westar Energy  
 Telephone AT&T  
 Water Wichita Water & Sewer Dept.



No.	Revision	By	Date
143RD ST. <b>PLAN</b> STA. 41+00 TO STA. 47+00			
JAMES L. ARMOUR, P.E. - CITY ENGINEER CITY OF WICHITA PROJECT NO. 472-84636			
<b>Professional Engineering Consultants, P.A.</b> 303 S. TOPEKA • WICHITA, KANSAS 67202 316-262-2691 • FAX 316-262-3003			
Designed by	JPS	Job No.	01616
Drawn by	SVB	Date	August, 2008
			SH. 53 of 282

DSNR: JPS OPER: DRP SCALE: 1"=20' 5-18-2004 10:34:39 LAST REV: 5-20-2008 BY: svb  
 I:\2001\01616\PLAN\SR143RD1.DGN