

Scale: 1"=20'

N: 1,699,972.9554, E: 1,694,358.4224  
 @ 21st St. N., Sta. 178+51.00, 38' Lt.  
 Adjust Existing Water Valve (C.O.W. #35003)  
 Existing Top of Box Elev. = 1362.86 \*  
 Proposed Top of Box Elev. = 1365.56  
 Total Adjustment = +2.70'  
 Provide Valve Stem Extension to within  
 5' of Proposed Top Elevation.

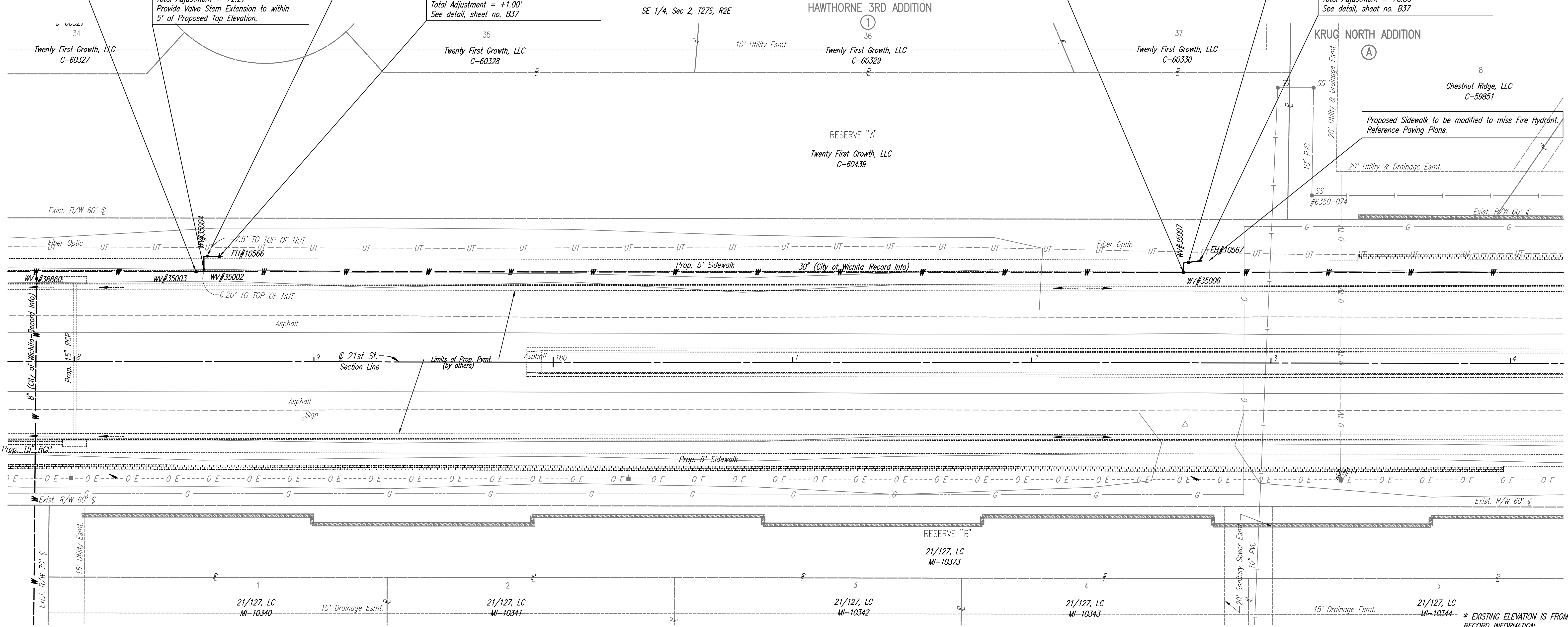
N: 1,699,979.6127, E: 1,694,362.9301  
 @ 21st St. N., Sta. 178+55.00, 44' Lt.  
 Adjust Existing Water Valve (C.O.W. #35004)  
 Total Adjustment = +1.42'  
 See detail, sheet no. B37

N: 1,699,974.1355, E: 1,694,361.7125  
 @ 21st St. N., Sta. 178+54.00, 39' Lt.  
 Adjust Existing Water Valve (C.O.W. #35002)  
 Existing Top of Box Elev. = 1363.38  
 Proposed Top of Box Elev. = 1365.65  
 Total Adjustment = +2.27'  
 Provide Valve Stem Extension to within  
 5' of Proposed Top Elevation.

N: 1,699,979.4953, E: 1,694,368.0378  
 @ 21st St. N., Sta. 178+60.00, 44' Lt.  
 FH ADJUSTMENT NO. 6  
 Adjust Existing Fire Hydrant Bury (C.O.W. #10566)  
 Total Adjustment = +1.00'  
 See detail, sheet no. B37

N: 1,699,983.1134, E: 1,694,770.9754  
 @ 21st St. N., Sta. 182+63.00, 38' Lt.  
 Adjust Existing Water Valve (C.O.W. #35006)  
 Existing Top of Box Elev. = 1369.34 \*  
 Proposed Top of Box Elev. = 1370.19  
 Total Adjustment = +0.85'  
 Provide Valve Stem Extension to within  
 5' of Proposed Top Elevation.

N: 1,699,988.0715, E: 1,694,777.8503  
 @ 21st St. N., Sta. 182+70.00, 42' Lt.  
 FH ADJUSTMENT NO. 7  
 Adjust Existing Fire Hydrant Bury (C.O.W. #10567)  
 Total Adjustment = +0.50'  
 See detail, sheet no. B37



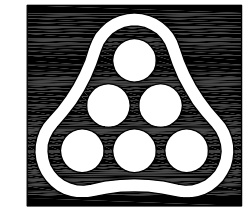
Proposed Sidewalk to be modified to miss Fire Hydrant. Reference Paving Plans.

\* EXISTING ELEVATION IS FROM RECORD INFORMATION. CONTRACTOR SHALL VERIFY ACTUAL TOP OF VALVE BOX ELEVATION.

Saved: 08-14-2008 9:21:42 AM by RW  
 G:\2007\01616\002\04178

- UTILITIES**
- Cable TV Cox Communications
  - Gas Kansas Gas Service
  - Power Westar Energy
  - San. Sewer Wichita Water Utilities
  - Telephone AT&T
  - Water Wichita Water Utilities

BM #11 RR spike in N. face Power Pole, S side 21st St. N, 3rd Pole E of S 1/4 Cor. Sec. 2-127S-R2E, 47.91' Rt. Sta. 183+23.46 Elev. 1360.88



No.	Revision	By	Date
<b>21ST STREET N. - FROM K-96 TO 159TH STREET E.</b> <b>WATERLINE ADJUSTMENTS</b> <b>STA. 178+00 TO STA. 184+00</b> JAMES L. ARMOUR, P.E. - CITY ENGINEER CITY OF WICHITA PROJECT NO. 448-90380 <b>Professional Engineering Consultants, P.A.</b> 303 S. TOPKA • WICHITA, KANSAS 67202 316-262-2691 • FAX 316-262-3003			
Designed by	MDK	Job No.	35-01616-002
Drawn by		Date	JANUARY 2003
			Sht. B13 of 40