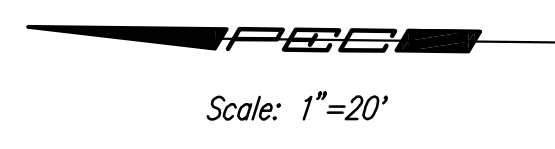


- W 1/4 Cor., Sec. 2, T27S, R2E (203)
1. Found Stone with "+" in Center & #4 Bar at SW Corner, ± 0.75' Below Surface
  2. Center Travel Way 127th St.
  3. Center of Brass Survey Marker in Concrete 30.07' E
  4. Mag. Nail in S Face of Fence Line Post 42.45' NE
  5. Mag. Nail in N Face of 12" Hedge Tree 32.71' WSW
  6. "X" Cut in S Face of Pipeline Marker 47.26' W



SW 1/4, Sec 2, T27S, R2E

HAWTHORNE ADDITION

(6)

2  
Twenty First Growth, LLC  
C-58227

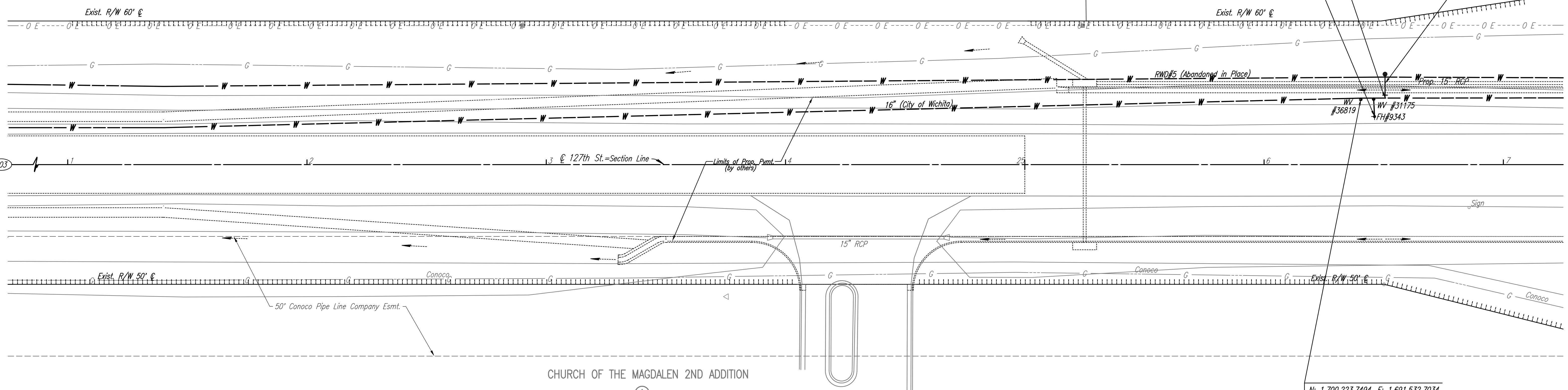
2  
Twenty First Growth, LLC  
C-58227

N: 1,700,217.8993, E: 1,691,525.6201  
127th St., Sta. 26+46, 20' Lt.  
Remove Existing Fire Hydrant and Reuse at  
127th St., Sta. 26+50.50, 38' Lt.  
Close Existing Valve and Remove Valve Box  
(Salvage to Wichita Water Utilities)  
Install 1- 6" CIMJ Plug.

N: 1,700,213.6034, E: 1,691,533.3755  
@ 127th St., Sta. 26+50.50, 27.8' Lt.  
FH RELOCATE NO. 11  
Existing 16" Water Main \*  
1- 16" x 8" Tapping Sleeve  
1- 8" Tapping Valve  
1- 6" Valve Box  
(To be furnished and set by  
City of Wichita Water Dept.)  
Top Valve Box El.= 1383.2  
10.00' 6" DI CL Pipe (E)  
1- Fire Hydrant  
FH Bury Line El.= 1383.6

CAUTION !!!  
Proposed 15" RCP  
Storm Water Sewer

3  
Twenty First Growth, LLC  
C-58228



CHURCH OF THE MAGDALEN 2ND ADDITION

(A)

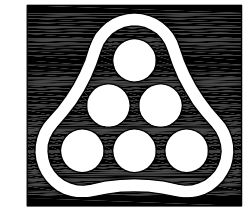
1  
Catholic Diocese of Wichita  
C-58083

SE 1/4, Sec 3, T27S, R2E

N: 1,700,223.7494, E: 1,691,532.7034  
@ 127th St., Sta. 26+40.00, 27' Lt.  
Adjust Existing Water Valve  
Existing Top of Box Elev.= 1382.04  
Proposed Top of Box Elev.= 1383.11  
Total Adjustment = +1.07'  
Provide Valve Stem Extension to within  
5' of Proposed Top Elevation.

\* PRIOR TO BEGINNING CONSTRUCTION, THE CONTRACTOR SHALL EXCAVATE THE EXISTING 16" WATERLINE AT @ 127th St., Sta. 26+50.50, 27.8' Lt. TO VERIFY PIPE SIZE, TYPE, FITTINGS, AND HORIZONTAL AND VERTICAL LOCATION. THE CONTRACTOR SHALL REPORT HIS FINDINGS TO THE ENGINEER SO THAT ANY NECESSARY PLAN MODIFICATIONS CAN BE MADE. ANY ADDITIONAL LABOR OR MATERIALS NECESSARY TO COMPLETE THE CONNECTION SHALL BE CONSIDERED SUBSIDIARY TO THE PROJECT.

- UTILITIES
- Gas Conoco
  - Gas Kansas Gas Service
  - Power Westar Energy
  - Telephone AT&T
  - Water Wichita Water Utilities
  - Water RWD #5



No.	Revision	By	Date
<b>21ST STREET N. - FROM K-96 TO 159TH STREET E.</b> <b>WATERLINE ADJUSTMENTS</b> <b>STA. 21+00 TO STA. 27+00</b> JAMES L. ARMOUR, P.E. - CITY ENGINEER CITY OF WICHITA PROJECT NO. 448-90380 <b>Professional Engineering Consultants, P.A.</b> 303 S. TOPEKA • WICHITA, KANSAS 67202 316-262-2691 • FAX 316-262-3003			
Designed by	MDK	Job No.	35-01616-002
Drawn by		Date	JANUARY 2003
			Sht. B28 of 40

Saved 08-14-2008 9:24:48 AM by R/W  
 C:\2007\01616\002\pr127th