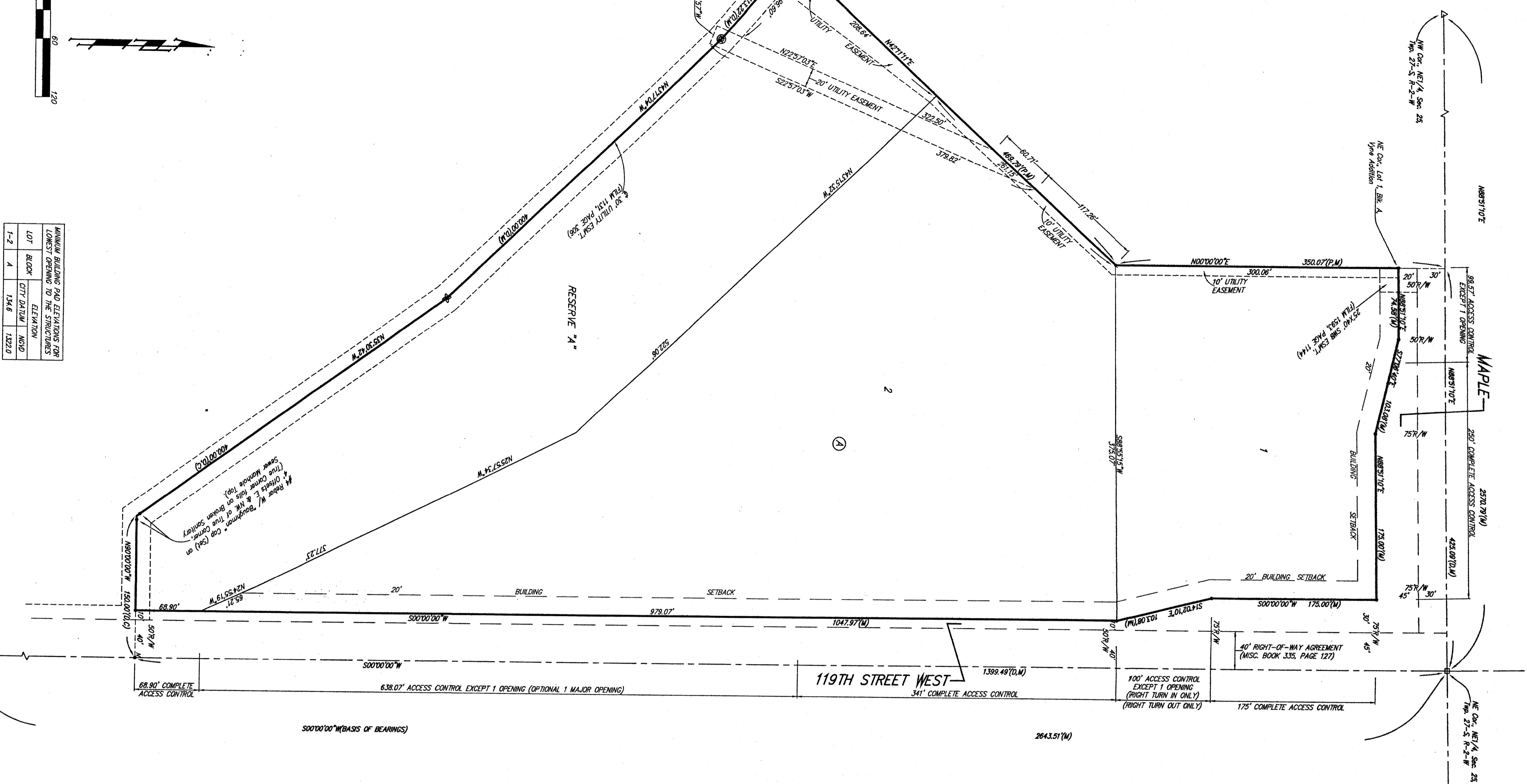


THUNDERBIRD OFFICE PARK AN ADDITION TO WICHITA, SEDGWICK COUNTY, KANSAS



| MINIMUM BUILDING PAD ELEVATIONS FOR LOWEST OPENING TO THE STRUCTURES | | | |
|--|-------|-----------|----------------|
| LOT | BLOCK | GTT DATUM | MINO ELEVATION |
| 1-2 | A | 134.6 | 1222.0 |

Benchmark:
City of Wichita Benchmark Date -
1/2 Mi. South of Maple &
2 mi. E. of 119th St. West
Elev. = 134.6 City Datum
"H" Nail (5x4)

NOTE:
A drainage plan has been developed for this subdivision and is on file with the City of Wichita, Kansas. Damage Inert shall be provided for the City of Wichita, Kansas. The City of Wichita shall be responsible for the flow of this drainage plan shall be approved.

State of Kansas) SS
We, Baughman Company, P.A. Surveyors in Sedgewick County and state do hereby certify that we have surveyed and plotted "THUNDERBIRD OFFICE PARK", an Addition to Wichita, Sedgewick County, Kansas and that the accompanying plot is a true and correct exhibit of the property surveyed, described as beginning at the NE corner of the NE 1/4 of Sec. 25, Twp. 27-S, R-2-W of the 6th P.M., Sedgewick County, Kansas; thence S00°00'00"W along the east line of said NE 1/4, 1399.49 feet; thence N90°00'00"W, 150.00 feet; thence N35°30'42"W, 400.00 feet; thence N43°17'04"W, 400.00 feet; thence N47°49'49"W, 113.22 feet to the most southerly corner of Reserve "A" in Yrue Addition, Wichita, Sedgewick County, Kansas; thence N42°11'11"E along the southeast line of said Reserve "A", and along the southeast line of Lot 1, Block A in said Yrue Addition, 469.79 feet to the most easterly SE corner of said Lot 1; thence N00°00'00"E along the east line of said Lot 1, and as extended north, 350.07 feet to a point on the north line of said NE 1/4; thence N68°51'10"E along the north line of said NE 1/4, 423.09 feet to the point of beginning, all being subject to road rights-of-way of record. Existing public easements and dedications being vacated by virtue of K.S.A. 12-512(b).
Baughman Company, P.A.

Michael G. Conroy
Michael G. Conroy, Surveyor

Know all men by these presents that we, the undersigned, have caused the land in the surveys certificate to be plotted into Lots, a Block, Streets, and a Reserve to be known as "THUNDERBIRD OFFICE PARK", an Addition to Wichita, Sedgewick County, Kansas. The utility easements are hereby granted as indicated for the construction and maintenance of all public utilities. The streets are hereby dedicated to and for the use of the public. The streets are hereby reserved for roadway, drainage purposes, and open space. No buildings or other obstructions shall be constructed or placed on or within said Reserve "A", nor shall any fill change of grade, creation of channel, or any other work be carried on without the permission of the City Engineer of the City of Wichita, Kansas. Reserve "A" shall be owned and maintained by the owner of Lot 2, Block A. All abutters' rights of access shall be as depicted on the face of the plot and are hereby granted to the City of Wichita, Kansas. The permitted opening locations shall be as determined by the City Engineer of the City of Wichita, Kansas. The Minimum Building Pad Elevations for the lowest opening to the structures shall be as indicated on the face of the plot.
Spring Creek Resources, LLC

Charles W. Atkins III
Charles W. Atkins III, Member

Brando Owen
Brando Owen

State of Kansas) SS
The foregoing instrument acknowledged before me, this 20th day of February, 2002, by Charles W. Atkins III, Member of Spring Creek Resources, LLC, on behalf of the limited liability company, JUDITH M. TERHUNE, Notary Public
My App't. Exp. 11-7-2005

State of Kansas) SS
The foregoing instrument acknowledged before me, this 17th day of March, 2002, by J. William Owen and Brando Owen, husband and wife, JUDITH M. TERHUNE, Notary Public
My App't. Exp. 11-7-2005

This plot of "THUNDERBIRD OFFICE PARK", an Addition to Wichita, Sedgewick County, Kansas has been submitted to and approved by the Wichita-Sedgewick County Metropolitan Area Planning Commission, Wichita, Kansas.
Dated this 20th day of December, 2001.
Wichita-Sedgewick County Metropolitan Area Planning Commission

This plot approved and all dedications shown hereon accepted by the City Council of the City of Wichita, Kansas, this 2nd day of April, 2002.
At the Direction of the City Council

Reviewed in accordance with K.S.A. 58-2005 on this 13th day of March, 2002.
Entered on transfer record this 10th day of April, 2002.

State of Kansas) SS
This is to certify that this plot has been filed for record in the office of the Register of Deeds, this 10th day of April, 2002 at 1:00 o'clock P.M. and is duly recorded.

BAUGHMAN COMPANY P.A.
ENGINEERING, SURVEYING, & PLANNING
318-283-2221 • 216 E. 10th • WICHITA, KANSAS 67202