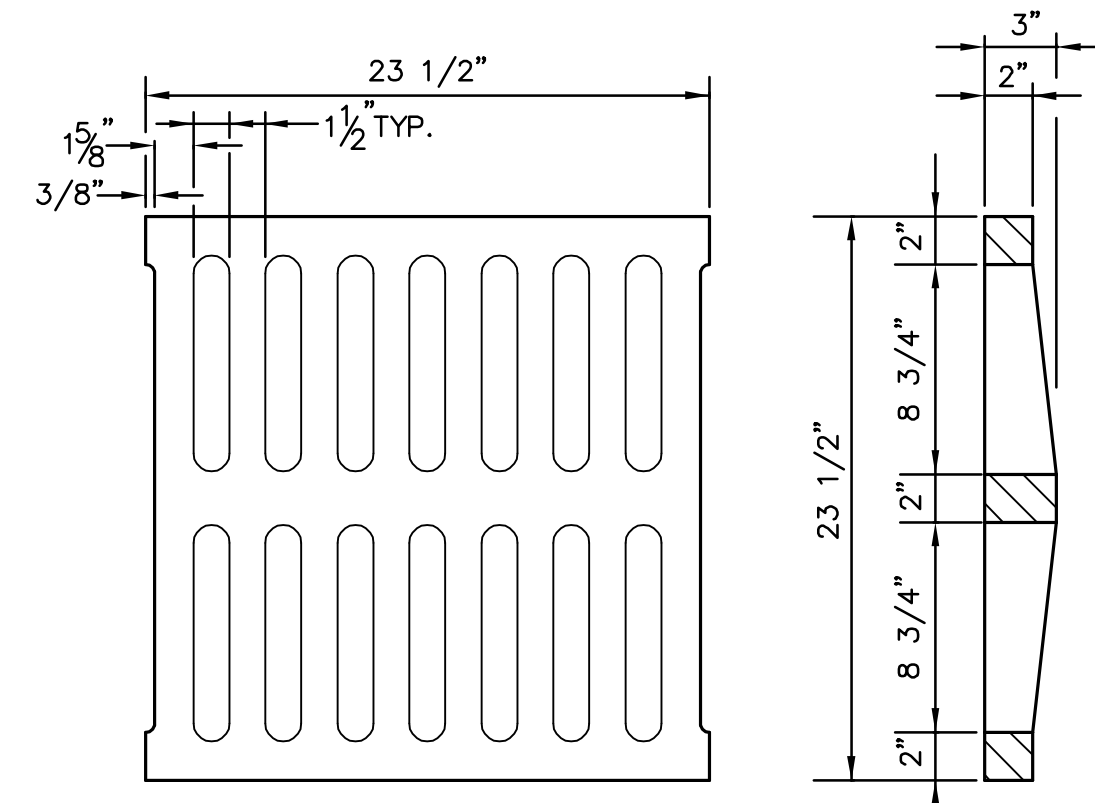
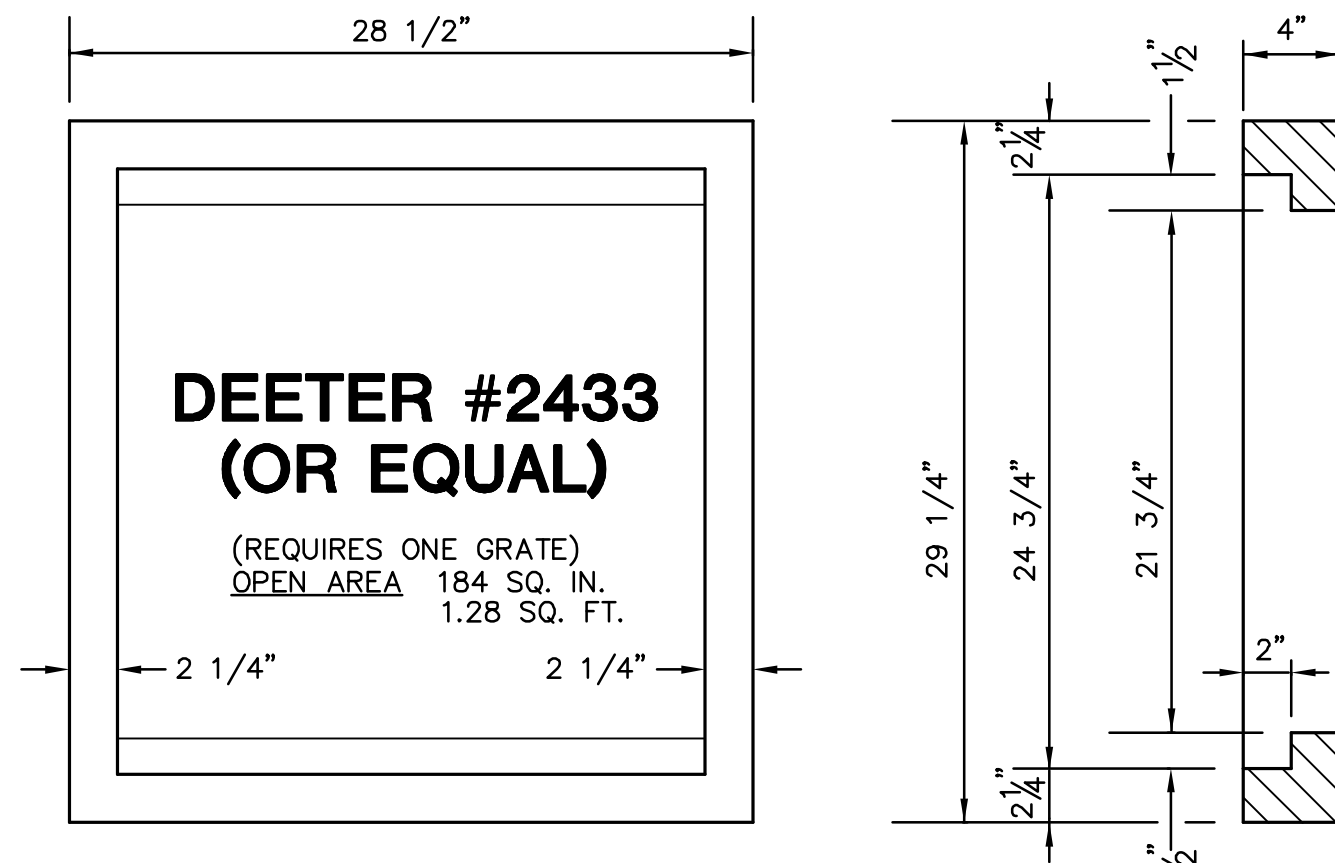


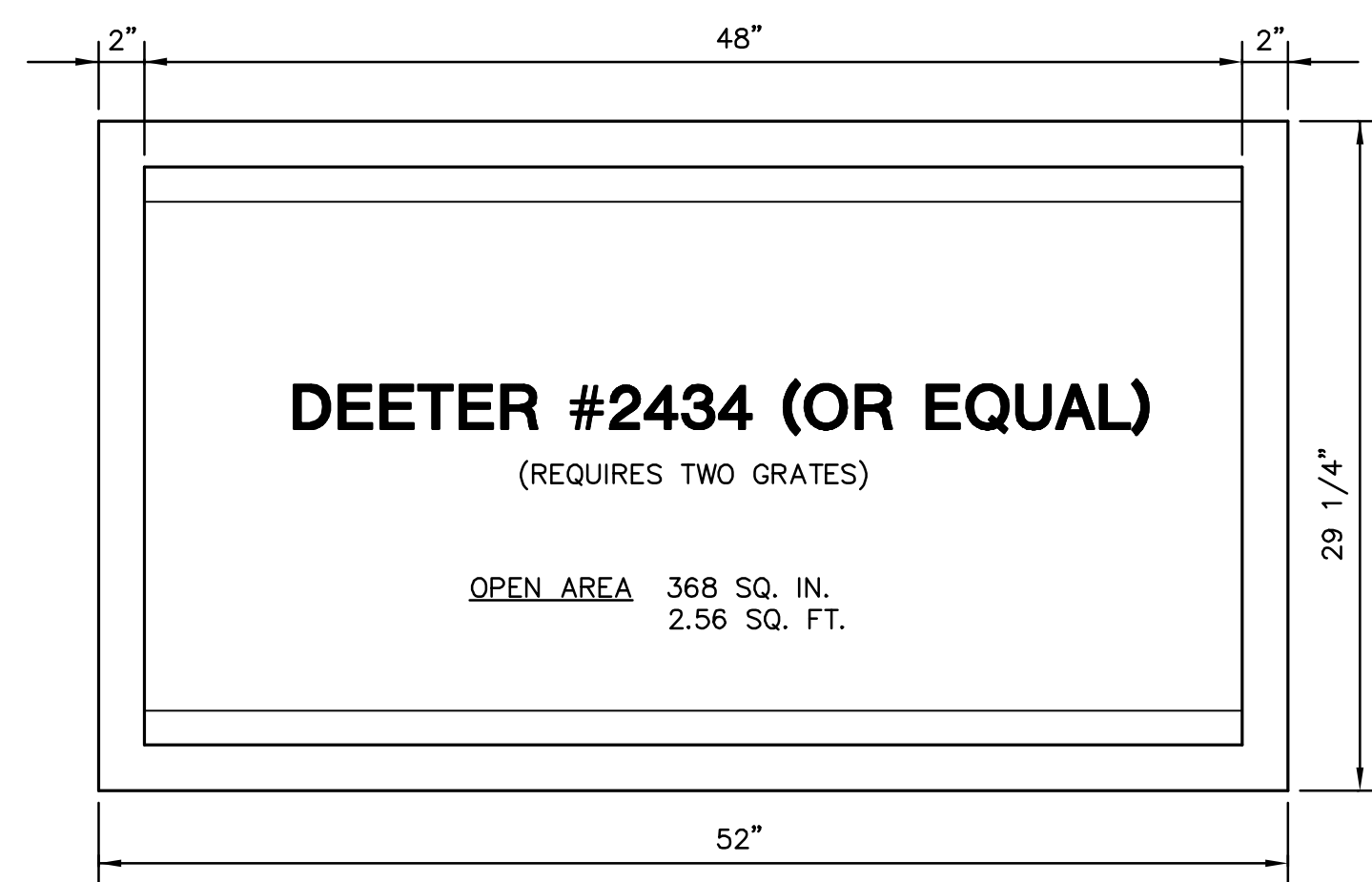
NOTE: GRATES SHALL BE IMPRINTED ON THE TOP SURFACE WITH "CITY OF WICHITA" USING LETTERS AT LEAST 1" IN HEIGHT. OTHER MARKING METHODS MAY BE USED ONLY IF APPROVED BY THE ENGINEER.



24"x24" GRATE DETAIL



SINGLE 24"x24" FRAME DETAIL

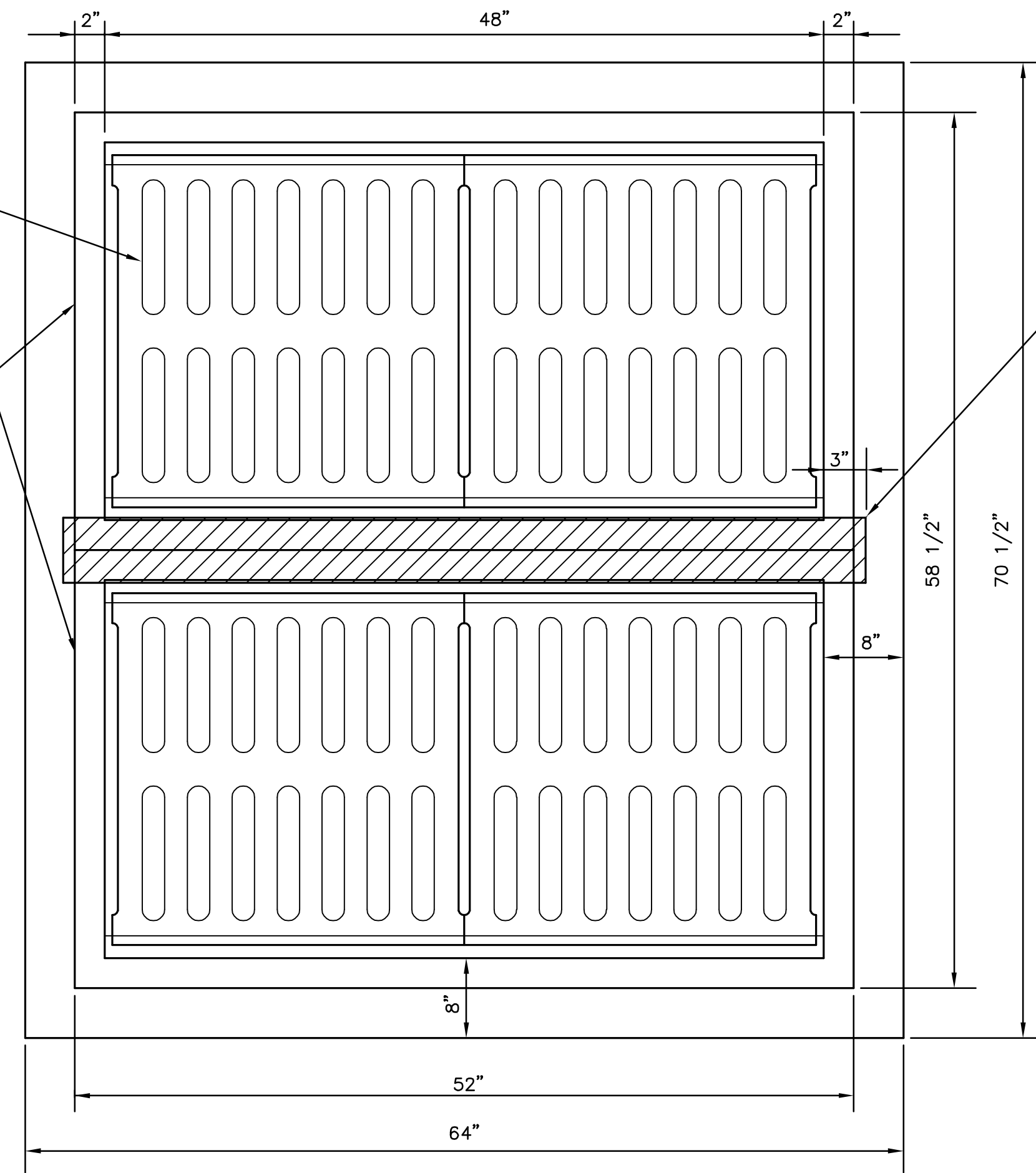


DOUBLE 24"x24" FRAME DETAIL

DEETER #2433 (OR EQUAL)

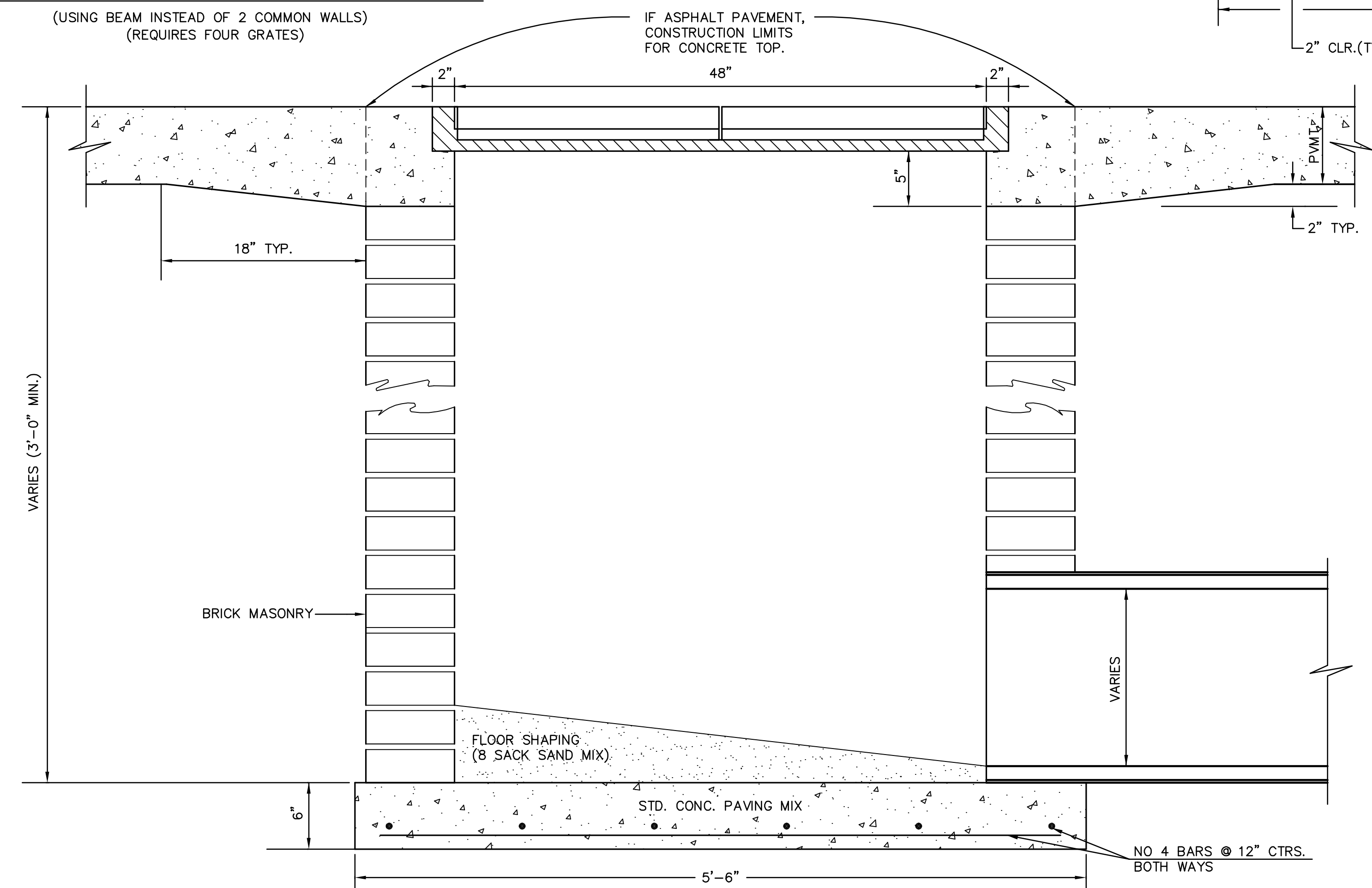
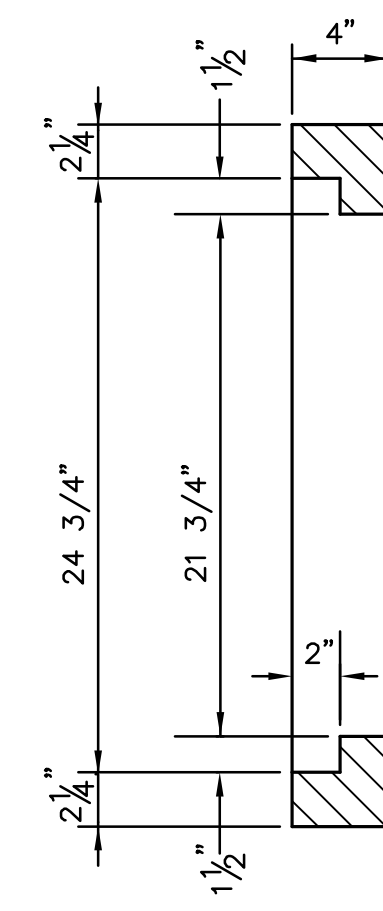
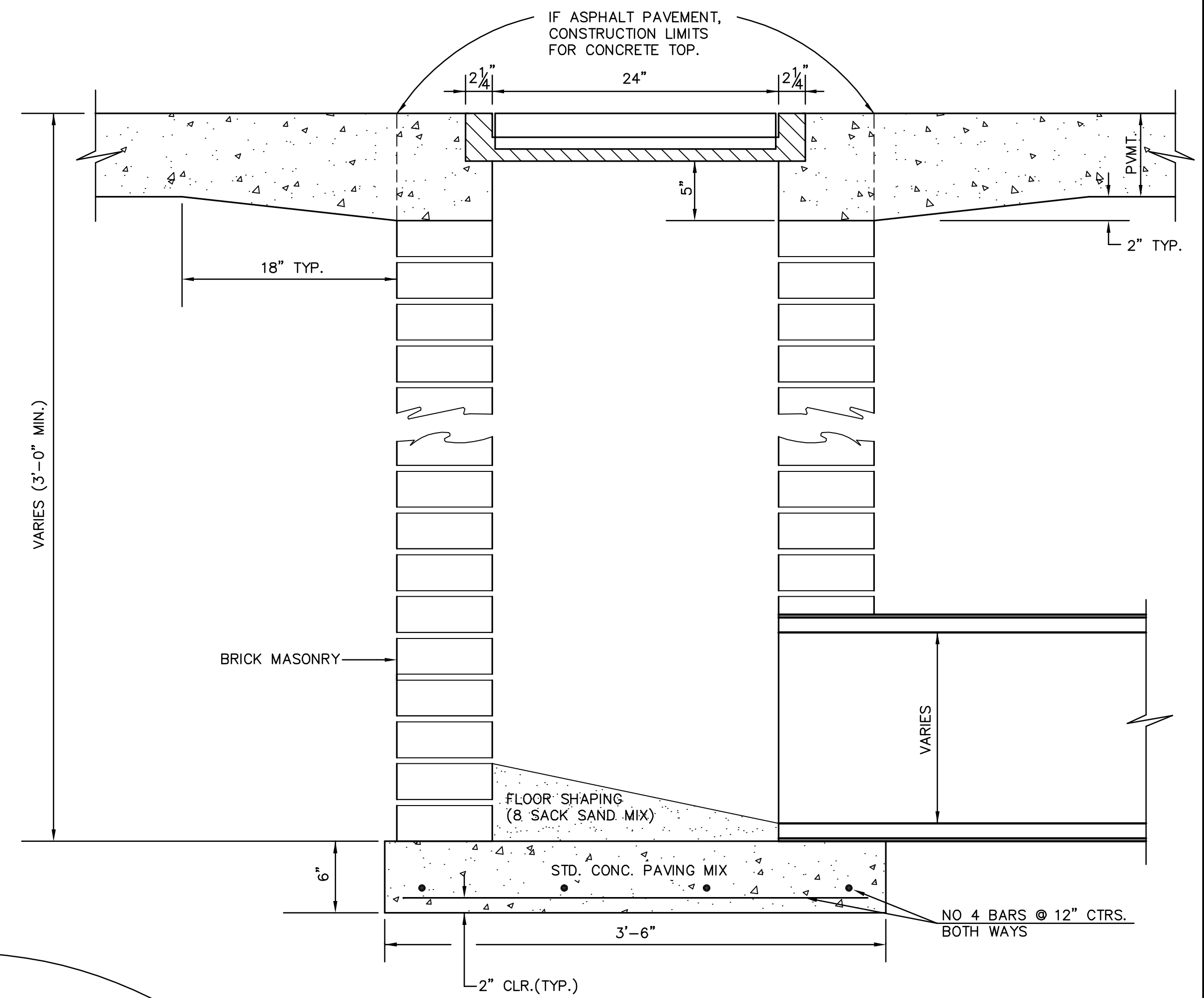
2-DOUBLE 24"x24" FRAMES

W6x25 I BEAM (SHALL BE GALVANIZED AS SPECIFIED BY ASTM. A-123)



ALTERNATE 2-DOUBLE DROP INLET

(USING BEAM INSTEAD OF 2 COMMON WALLS)
(REQUIRES FOUR GRATES)



ORIFICE EQUATION		
$Q = C \cdot A \cdot \sqrt{2gh}$ $C = 0.60$		
h (DEPTH)	#2433 (SINGLE)	#2434 (DOUBLE)
0.1	1.95 cfs	3.89 cfs
0.2	2.75 cfs	5.50 cfs
0.3	3.37 cfs	6.74 cfs
0.4	3.89 cfs	7.78 cfs
0.5	4.35 cfs	8.70 cfs
0.6	4.77 cfs	9.53 cfs
0.7	5.15 cfs	10.30 cfs
0.8	5.50 cfs	11.01 cfs
0.9	5.84 cfs	11.67 cfs
1.0	6.15 cfs	12.30 cfs

REVISED: 5-8-90 JNJ

DROP INLET DETAILS

CITY OF WICHITA, KANSAS

Design	C.O.W.	Checked by	Checked by	2	10
Drawn by		Date	JUNE 08	Job No.	

I:\LIBRARY\CIVIL\SAN\SC-CO\VP_JMHTL.DWG

J:\CIVIL\04274\DWG\SWIS\FOLIAGE CENTER ADD\04274_B01.DWG