

REINFORCING STEEL							
Straight Bars			Bent Bars				
Mark	Size	Number	Length	Mark	Size	Number	Length
AB2	#5	2	14'-1"	ABI	#5	28	5'-3"
AB3	#5	2	10'-0"				
AF1	#8	17	15'-1"	ASI	#5	62	4'-2"
AF2	#8	17	11'-0"	AVI	#4	36	13'-8"
AW1	#5	9	11'-8"	AW5	#5	3	Varies
AW2	#5	9	10'-4"	AW6	#5	9	13'-8"
AW3	#5	7	6'-0"	AW10	#5	5	Varies
AW4	#5	28	5'-10"				
AW7	#5	9	11'-0"				
AW8	#5	7	7'-9"				
AW9	#5	30	5'-10"				

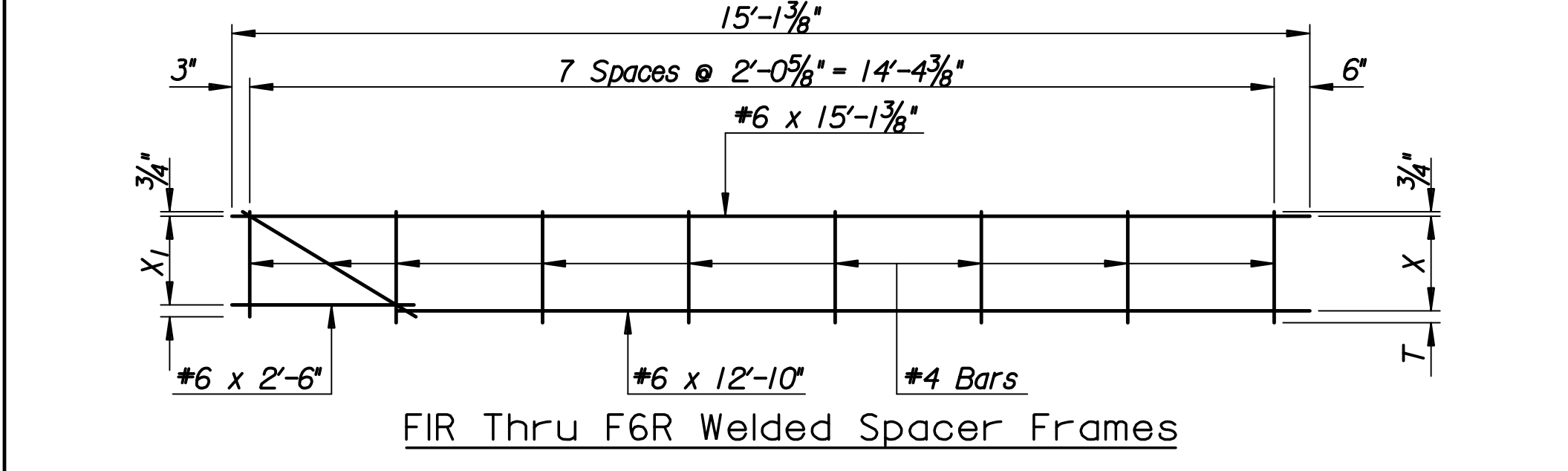
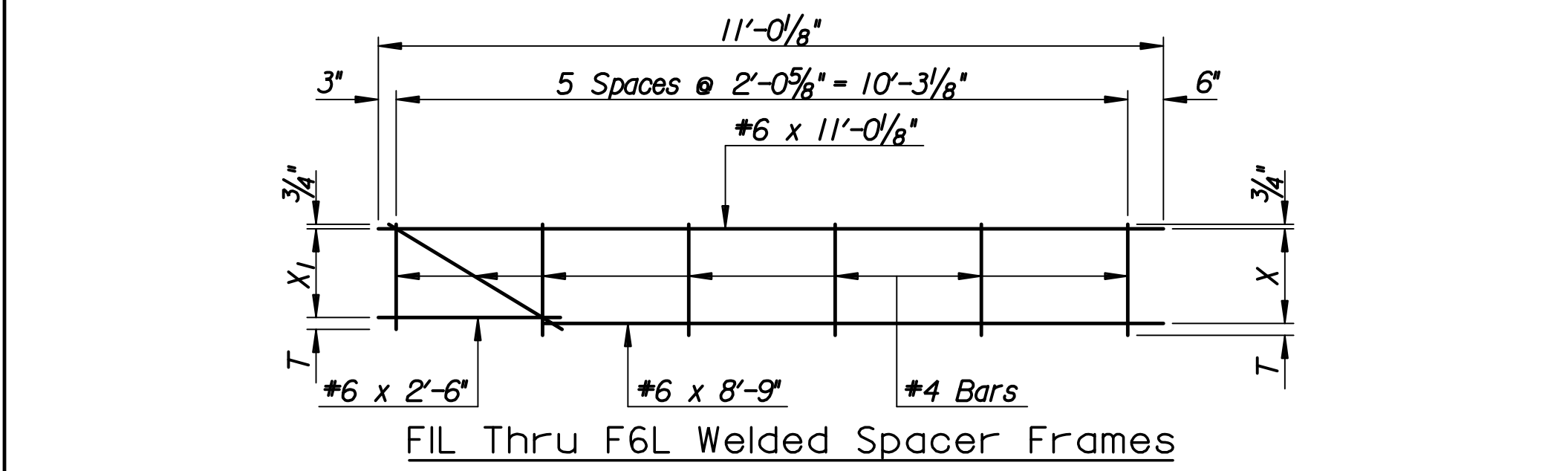
REINFORCING STEEL							
Straight Bars			Bent Bars				
Mark	Size	Number	Length	Mark	Size	Number	Length
PB8	#5	12	6'-0"	PBI	#5	39	5'-2"
PB10	#9	5	15'-4"	PB2	#5	8	12'-6"
PB12	#7	4	15'-4"	PB3	#5	10	Varies
PB13	#7	6	Varies	PB9	#5	12	6'-2"
PB20	#9	5	19'-6"	PB11	#9	5	15'-11"
PB22	#7	4	19'-6"	PB14	#5	4	7'-4"
PB23	#7	6	Varies	PB15	#5	16	Varies
				PB21	#9	5	19'-10"
				PXI	#6	78	4'-6"

REINFORCING STEEL							
Straight Bars			Bent Bars				
Mark	Size	Number	Length	Mark	Size	Number	Length
S1	#8	60	31'-0"	H1	#5	12	14'-3"
S2	#10	28	28'-0"	H2	#5	24	Varies
S3	#10	32	20'-0"	H3	#5	96	5'-5"
S4	#7	240	8'-0"	S8	#5	60	9'-3"
S5	#8	90	35'-0"	S9	#5	28	11'-9"
S6	#10	42	31'-0"				
S7	#10	48	22'-0"				
S10	#7	32	15'-6"				
S11	#9	32	40'-0"				
S12	#10	32	21'-0"				
S13	#10	28	31'-0"				
S14	#10	28	13'-0"				
S15	#6	48	14'-0"				
S16	#9	32	35'-0"				
S17	#10	32	19'-0"				
S18	#10	28	28'-0"				
S19	#10	28	12'-0"				
FIL-F6L							
FIR-F6R							
T1	#6	223	10'-11"				
T2	#6	223	15'-0"				
R11	#6	32	5'-10"	R1	#7	24	11'-2"
R12	#6	304	9'-8"	R2	#7	4	6'-7"
SCI	#4	120	6'-6"	R3	#7	332	9'-7"
				R4	#4	332	4'-2"
				R5	#5	8	6'-6"
				R6	#5	12	10'-8"
				R7	#4	4	10'-8"
				R8	#3	558	6'-0"
				R9	#3	320	4'-6"
				R10	#3	160	4'-6"

REINFORCING STEEL							
Straight Bars			Bent Bars				
Mark	Size	Number	Length	Mark	Size	Number	Length
AB2	#5	2	14'-1"	ABI	#5	28	5'-3"
AB3	#5	2	10'-0"				
AF1	#8	17	15'-1"	ASI	#5	62	4'-2"
AF2	#8	17	11'-0"	AVI	#4	36	13'-8"
AW1	#5	9	11'-8"	AW5	#5	3	Varies
AW2	#5	9	10'-4"	AW6	#5	9	13'-8"
AW3	#5	7	6'-0"	AW10	#5	5	Varies
AW4	#5	30	5'-10"				
AW7	#5	9	11'-0"				
AW8	#5	7	7'-9"				
AW9	#5	28	5'-10"				

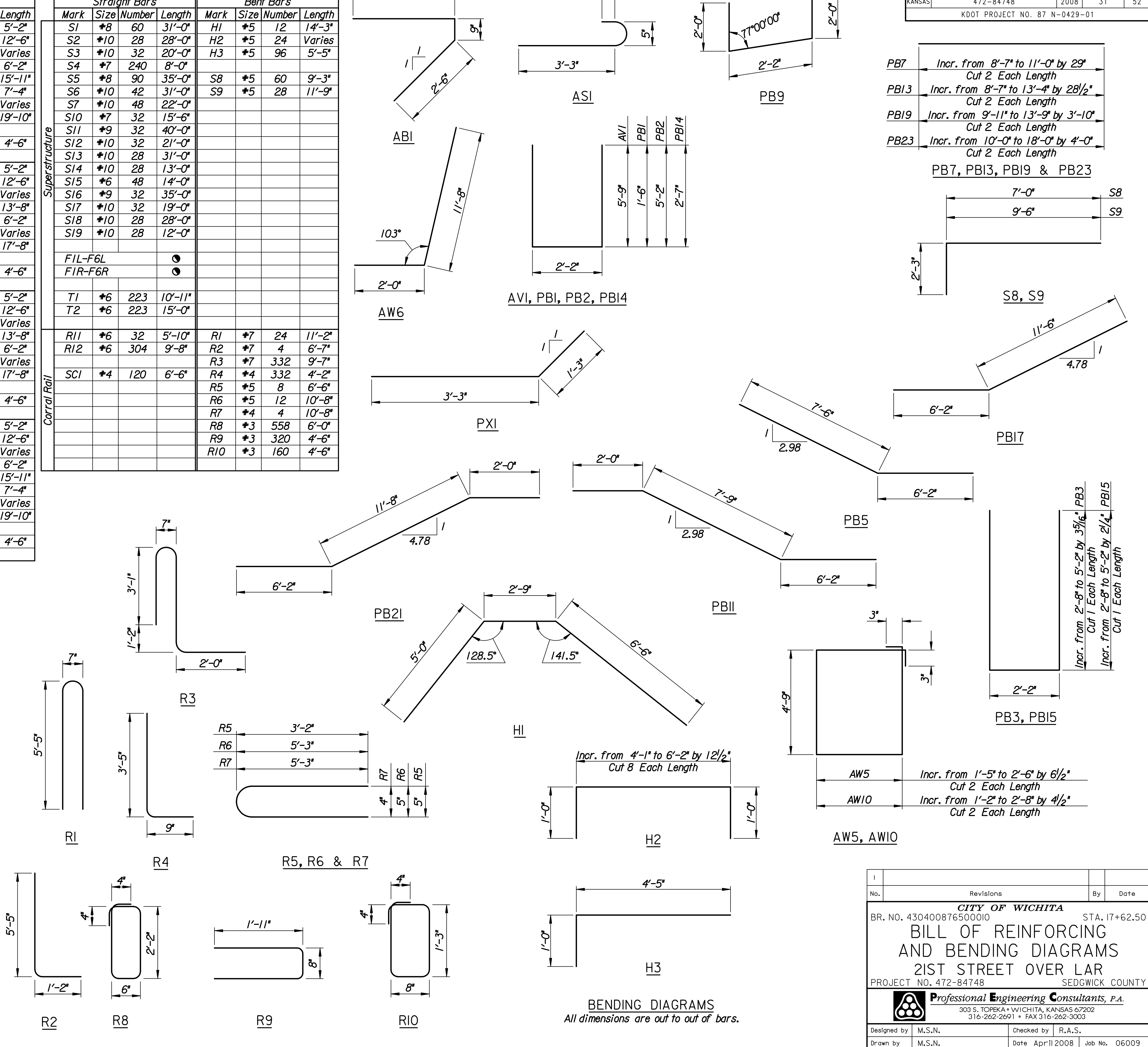
REINFORCING STEEL							
Straight Bars			Bent Bars				
Mark	Size	Number	Length	Mark	Size	Number	Length
PB4	#9	5	13'-4"	PBI	#5	34	5'-2"
PB6	#7	6	13'-4"	PB2	#5	8	12'-6"
PB7	#7	4	Varies	PB3	#5	10	Varies
PB8	#5	12	6'-0"	PB5	#9	5	13'-8"
PB16	#9	5	17'-5"	PB9	#5	12	6'-2"
PB18	#7	6	17'-5"	PB15	#5	16	Varies
PB19	#7	4	Varies	PB17	#9	5	17'-8"
				PXI	#6	68	4'-6"

REINFORCING STEEL							
Straight Bars			Bent Bars				
Mark	Size	Number	Length	Mark	Size	Number	Length
PB8	#5	12	6'-0"	PBI	#5	39	5'-2"
PB10	#9	5	15'-4"	PB2	#5	8	12'-6"
PB12	#7	4	15'-4"	PB3	#5	10	Varies
PB13	#7	6	Varies	PB9	#5	12	6'-2"
PB20	#9	5	19'-6"	PB11	#9	5	15'-11"
PB22	#7	4	19'-6"	PB14	#5	4	7'-4"
PB23	#7	6	Varies	PB15	#5	16	Varies
				PB21	#9	5	19'-10"
				PXI	#6	78	4'-6"



SPACER FRAMES				
Mark	No.	Dim. X	Dim. X ₁	Dim. T
FIL	4	9 5/16"	8 5/16"	2 1/16"
F2L	6	9 5/16"	8 5/16"	2 1/16"
F3L	8	9 5/16"	8 5/16"	2 1/16"
F4L	8	1'-0 1/16"	11 1/16"	2 1/8"
F5L	8	1'-2 5/16"	1'-11 5/16"	2"
F6L	2	8 5/16"	7 5/16"	2 1/16"

SPACER FRAMES				
Mark	No.	Dim. X	Dim. X ₁	Dim. T
FIR	4	9 5/16"	8 5/16"	2 1/16"
F2R	6	9 5/16"	8 5/16"	2 1/16"
F3R	8	9 5/16"	8 5/16"	2 1/16"
F4R	8	1'-0 1/16"	11 1/16"	2 1/8"
F5R	8	1'-2 5/16"	1'-11 5/16"	2"
F6R	2	8 5/16"	7 5/16"	2 1/16"



No.	Revisions	By	Date
CITY OF WICHITA BR. NO. 430400876500010 STA. 17+62.50 BILL OF REINFORCING AND BENDING DIAGRAMS 21ST STREET OVER LAR PROJECT NO. 472-84748 SEDGWICK COUNTY			
Professional Engineering Consultants, P.A. 303 S. TOPICKA • WICHITA, KANSAS 67202 316-262-2691 • FAX 316-262-3003			
Designed by	M.S.N.	Checked by	R.A.S.
Drawn by	M.S.N.	Date	Apr 11 2008 Job No. 06009

Plotted by : msn 9-2-2008
 Drawn by : msn
 1/2006/06009/Final/09_02_2008/06008-000-Reinforcing.dgn