

GENERAL NOTES

The horizontal members of the Rail and Posts shall be hollow structural tubing. All structural steel tubing shall comply to A.S.T.M. designation A36 or A500 Grade B respectively.

Rail shall be fabricated in lengths as shown from Joint to Joint and Joint to end.

Post and Bars shall be set vertical and shimmed if required.

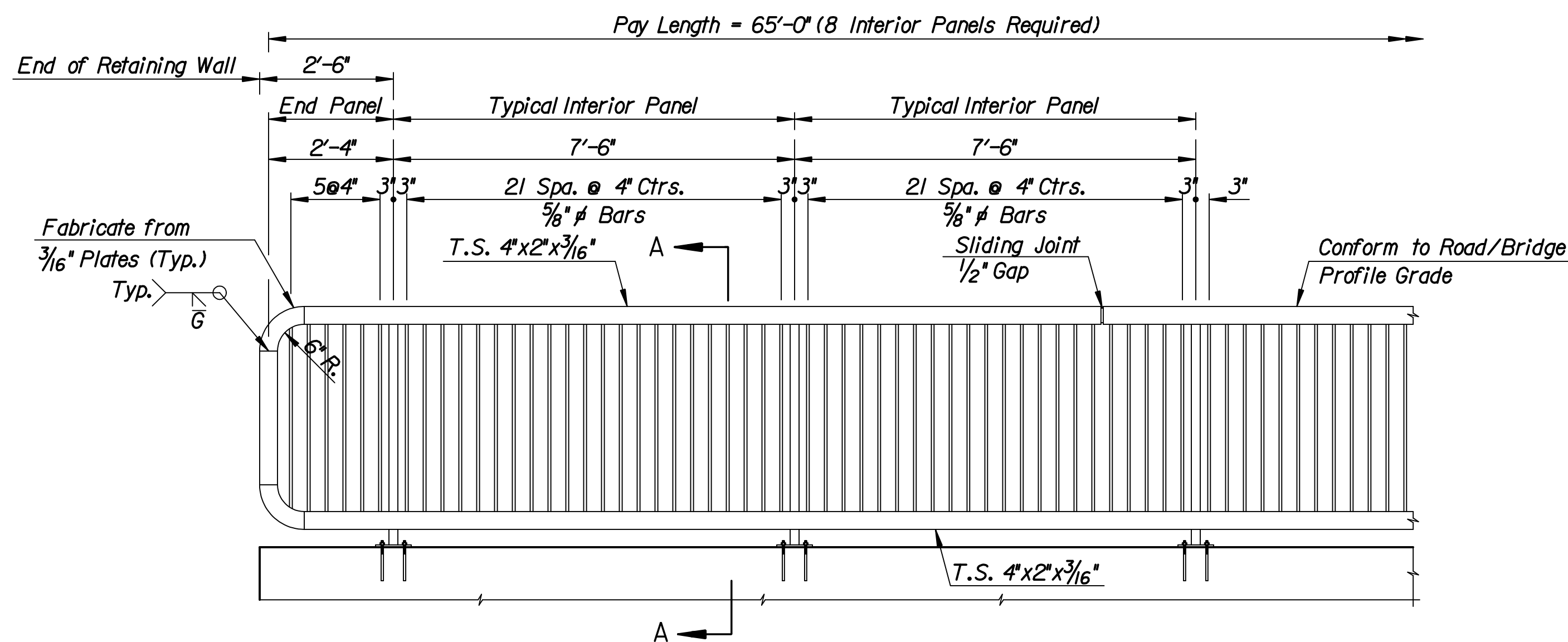
Prior to painting abrasive blast to commercial finish SSPC-SP6 to obtain a surface profile of 1-1/2 Mils. The shop and field coats applied to structural steel shall conform to an inorganic Zinc Primer with water-borne Acrylic finish coat. (The finish coat shall match Carboline C-900) Provide a color sample to the Engineer with shop drawing submittal.

Material and construction shall conform to the structural welding code A.W.S. D1.1-01.

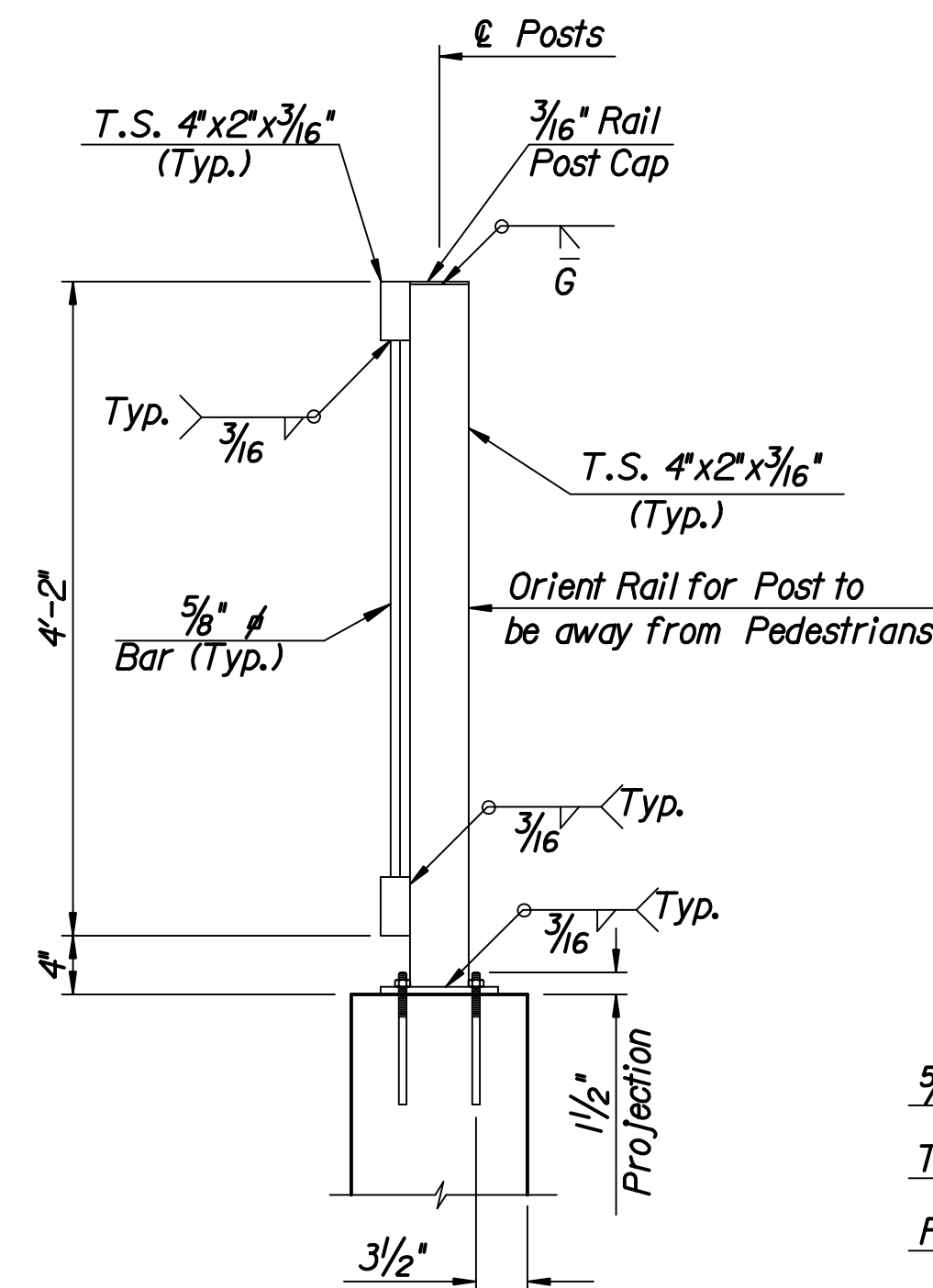
Shop details must be submitted and approved by the Engineer.

Slope of Handrail shall match the slope of the Retaining Wall.

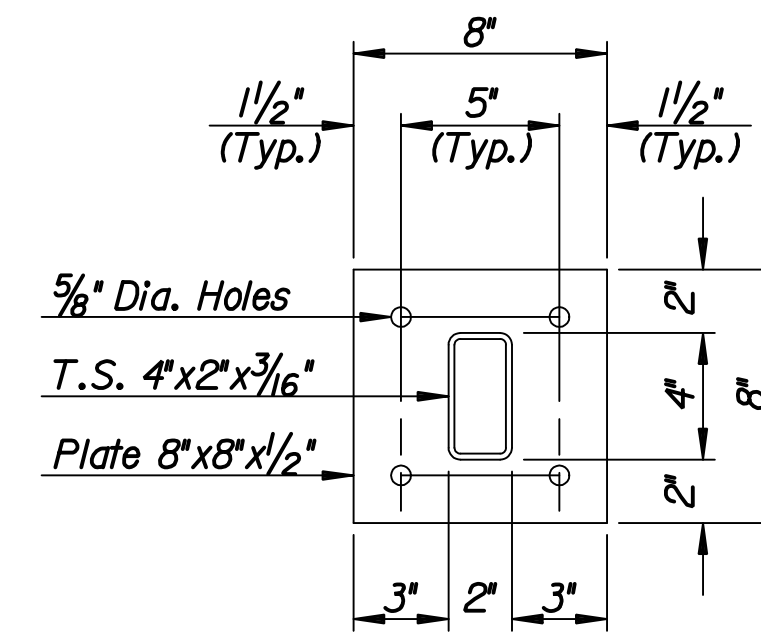
All work associated with furnishing and installing Handrail shall be subsidiary to the bid item "Retaining Wall".



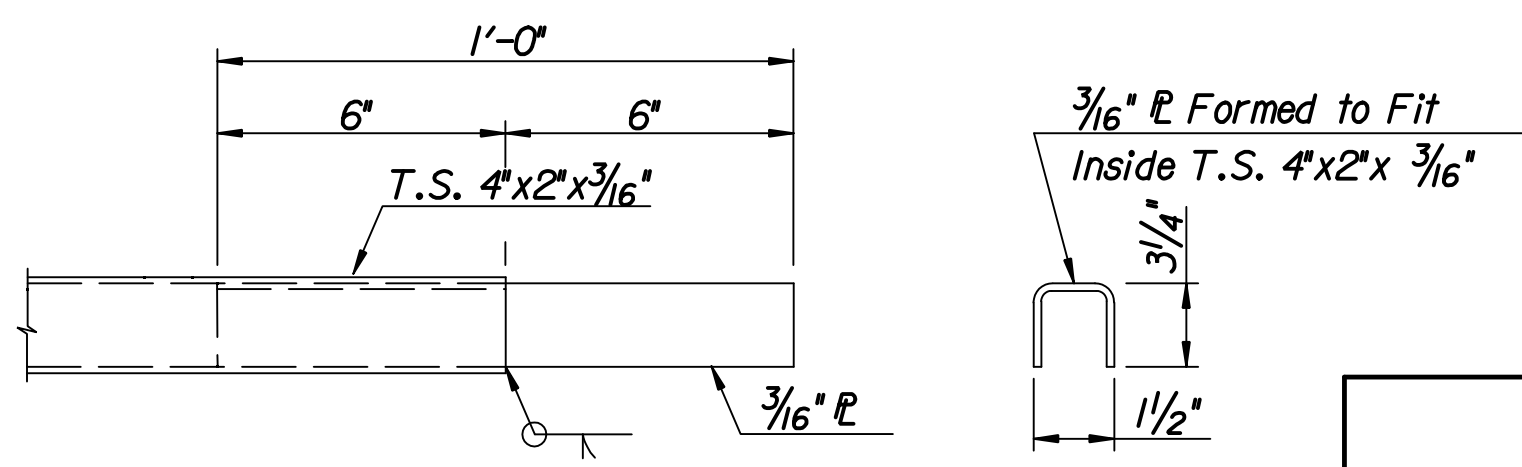
BICYCLE GUARDRAIL ELEVATION



SECTION A-A



BASE PLATE

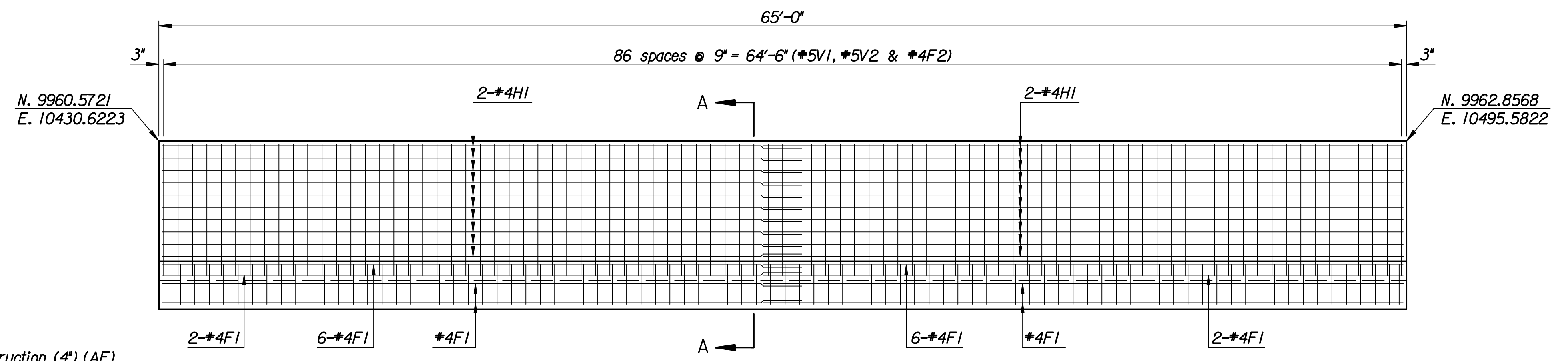


PLAN

PLATE SECTION

SLIDING JOINT DETAIL

NOTE: Sliding joints, when required, on interior panels shall be centered 2'-0" from posts.



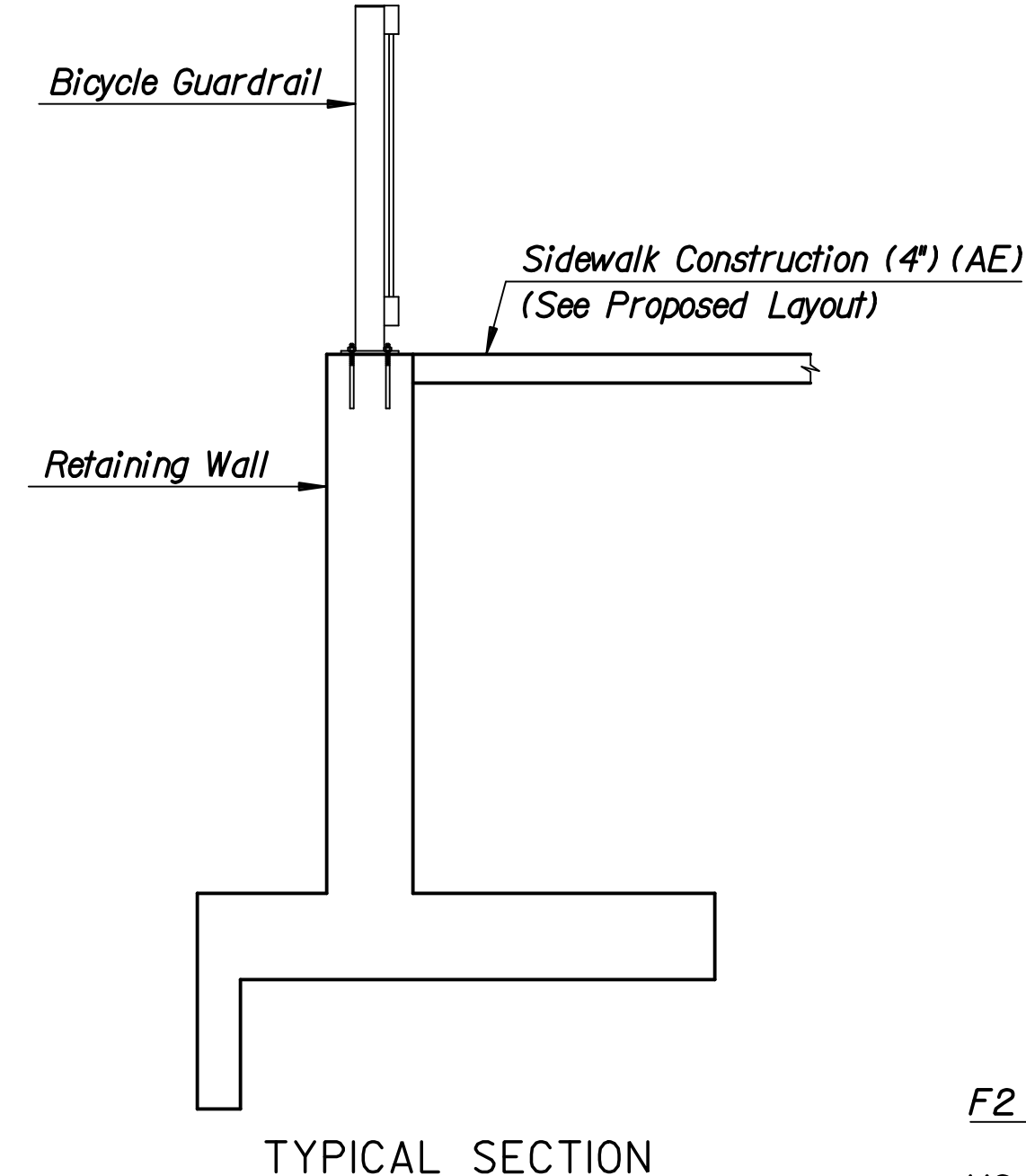
RETAINING WALL ELEVATION

Front face shown; coordinates are to the rear face.

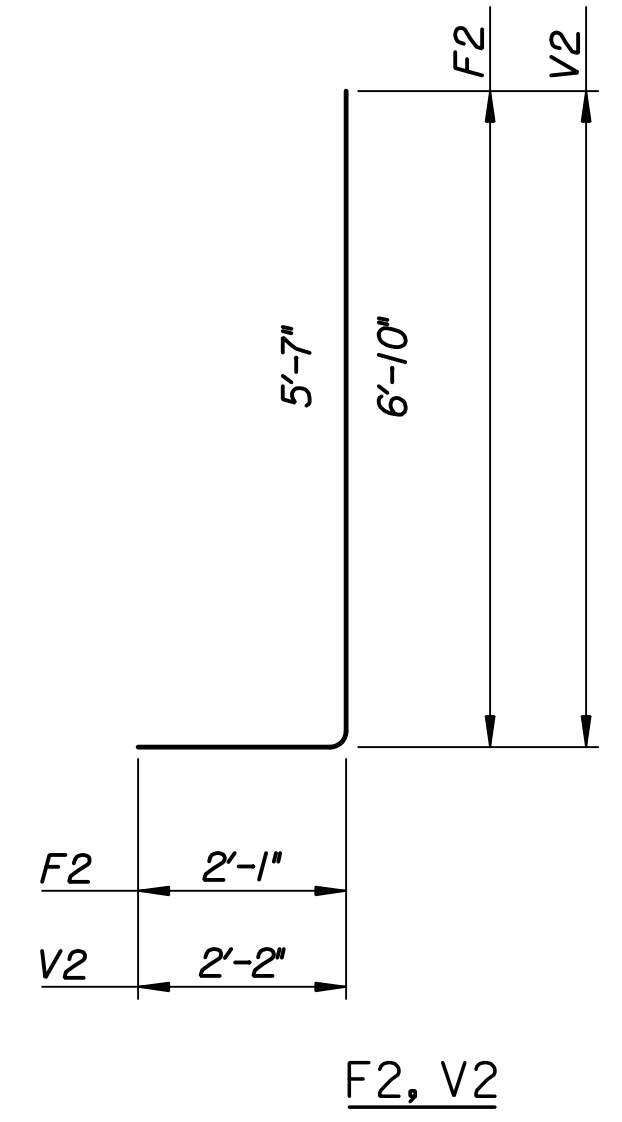
GENERAL NOTES

CONCRETE: All concrete shall be Concrete (Grade 4.0)(SA) with a minimum compressive strength of 4,000 P.S.I. Bevel all exposed edges with a 3/4" triangular molding or approved edging tool.

REINFORCING STEEL: All dimensions relative to reinforcing steel are to centerline of bar unless otherwise noted. All edge clearances shall be 2" and all end clearances shall be 1/2" unless otherwise noted. All reinforcing steel shall conform to A.S.T.M. designation A615 grade 60.

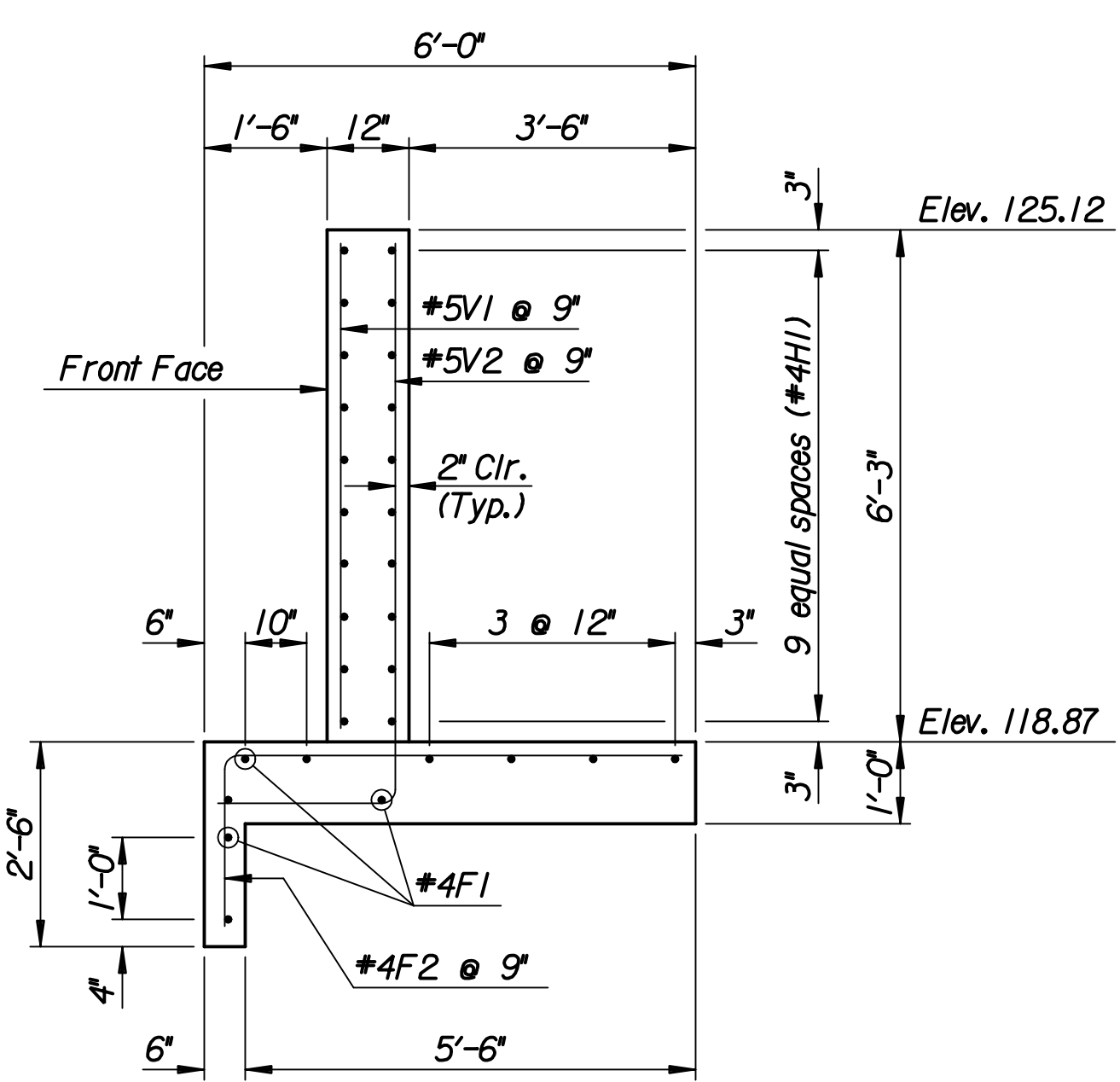


TYPICAL SECTION



BENDING DIAGRAMS
All dimensions are out to out of bars.

REINFORCING STEEL						
Straight Bars				Bent Bars		
Mark	Size	Number	Length	Mark	Size	Number
F1	#4	20	33'-4"	F2	#4	87
HI	#4	40	33'-4"	V2	#5	87
VI	#5	87	5'-11"			



SECTION A-A

Plotted by: msn 9-2-2008
drawn by: msn
1/2006/06009/Final/09_02_2008/06009-000-RetWall.dgn

No.	Revisions	By	Date
CITY OF WICHITA			
BR. NO. 430400876500010		STA. 17+62.50	
RETAINING WALL AND BICYCLE GUARDRAIL DETAILS			
21ST STREET OVER LAR			
PROJECT NO. 472-84748		SEDGWICK COUNTY	
Professional Engineering Consultants, P.A.			
303 S. TOPEKA • WICHITA, KANSAS 67202 316-262-2691 • FAX 316-262-3003			
Designed by	M.S.N.	Checked by	R.A.S.
Drawn by	M.S.N.	Date	July 2008
		Job No.	06009