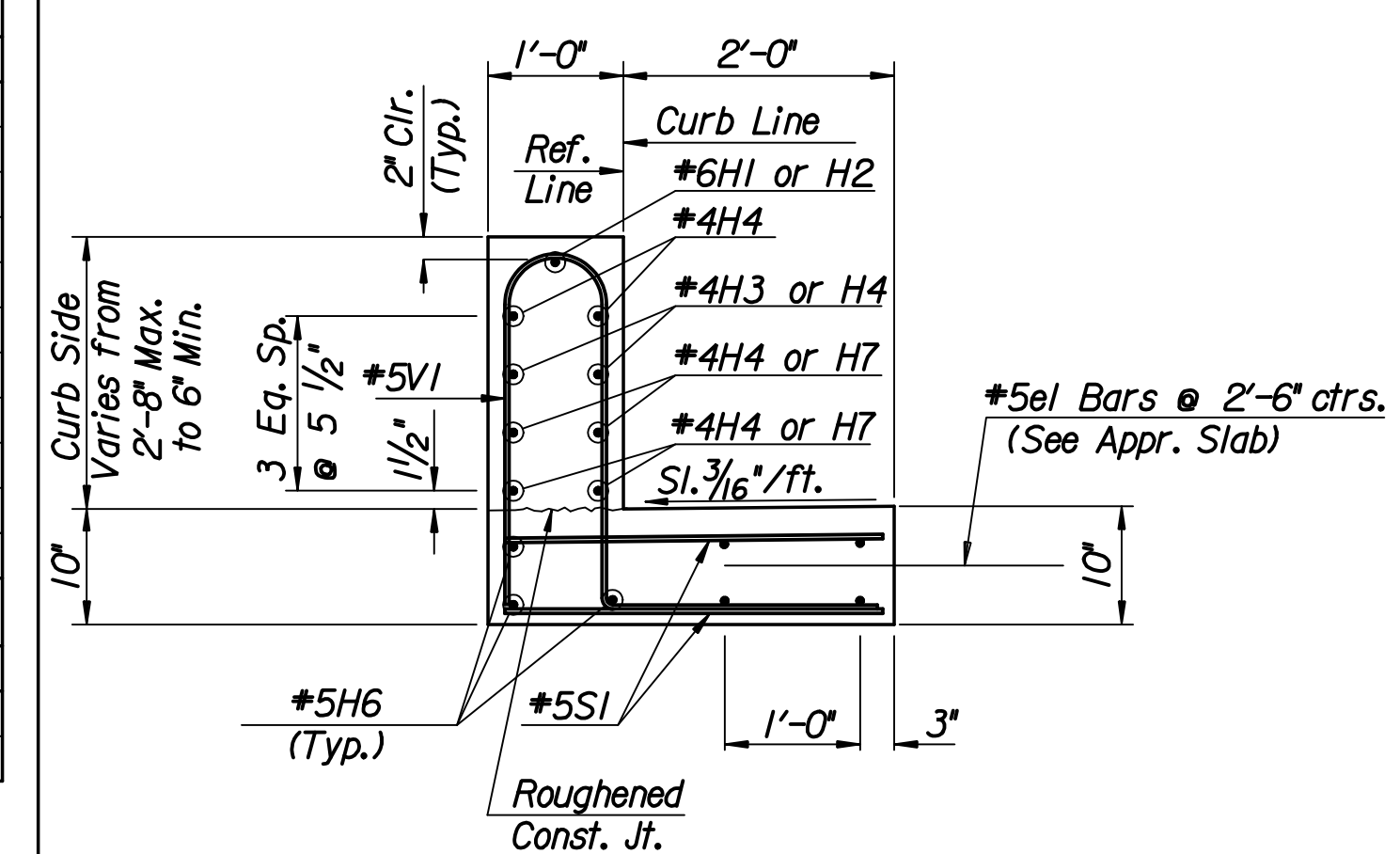


BILL OF MATERIALS (ENTRANCE IN WEST)							
REINFORCING STEEL							
Mark	No.	Size	Length	Mark	No.	Size	Length
H1	1	6	14'-2"	H6	14	5	9'-8"
H2	2	6	9'-8"	H7	6	4	9'-8"
H3	2	4	4'-5"	H10	2	4	6'-5"
H4	8	4	14'-0"				
SI	40	5	2'-8"				
VI	34	5	Varies				

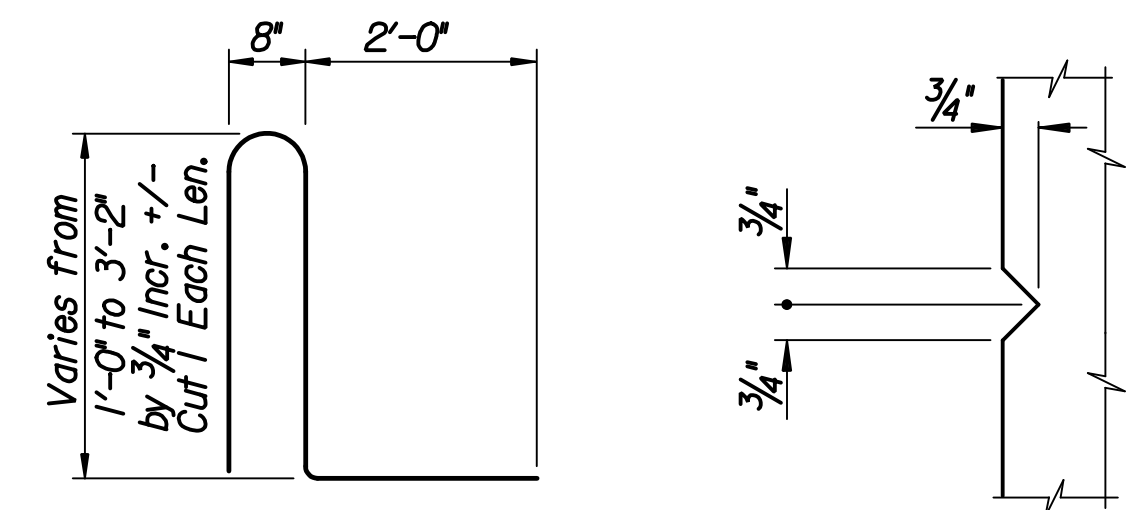
* SUMMARY OF QUANTITIES		
Item	Quantity	Unit
Concrete Grade (4.0)(AE)	3.95	C.Y.
Reinforcing Steel (Gr. 60)	669	Lbs.

*\*\* For Information Only*



**SECTION THRU SAFETY BARRIER  
(TRANSITION)**

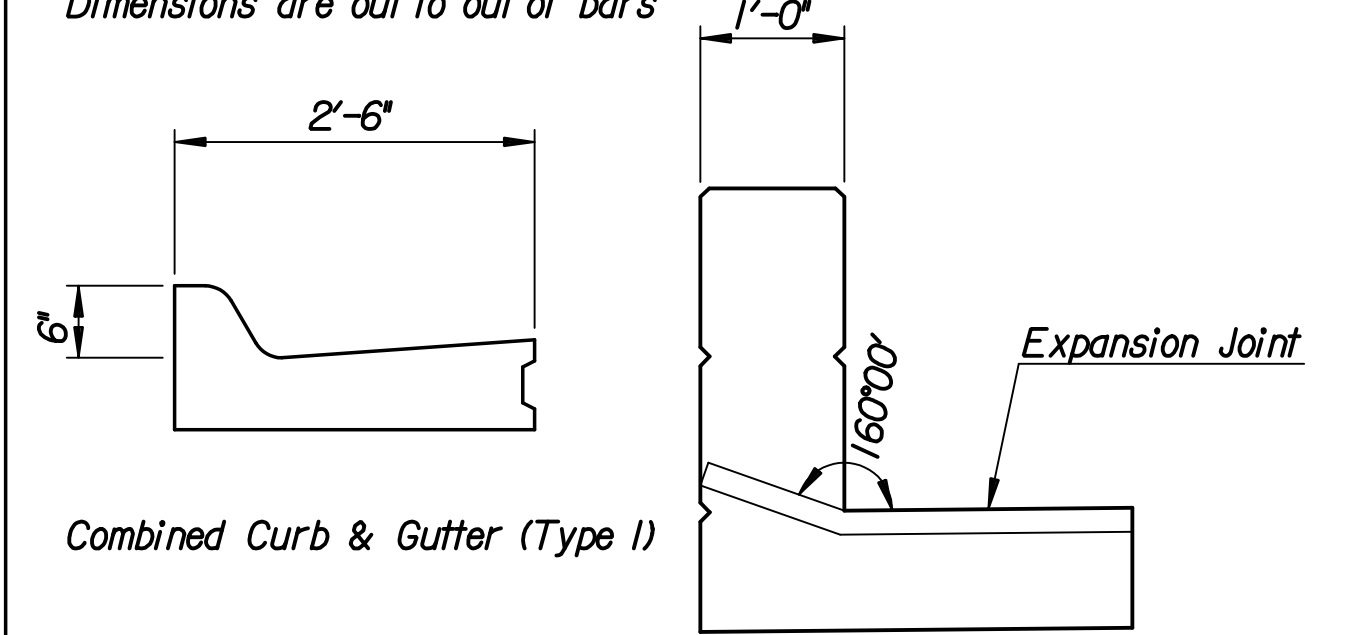
Adjust F.L. & crossslope in first 5' to meet Combined Curb & Gutter (Type I)



**5VI**

**TYPICAL 3/4\"/>**

**BENDING DIAGRAMS**  
Dimensions are out to out of bars



**TYPICAL BARRIER JOINT TREATMENT**

**CONCRETE SAFETY BARRIER (SPECIAL) (AE) NOTES**

The "Concrete Safety Barrier (Special)(AE)" shall be constructed of Concrete Grade (4.0)(AE) and A-615 Grade 60 reinforcing steel.

The 2'-8" sections of the barrier shall be grooved with a 3/4" chamfer strip on all exposed edges.

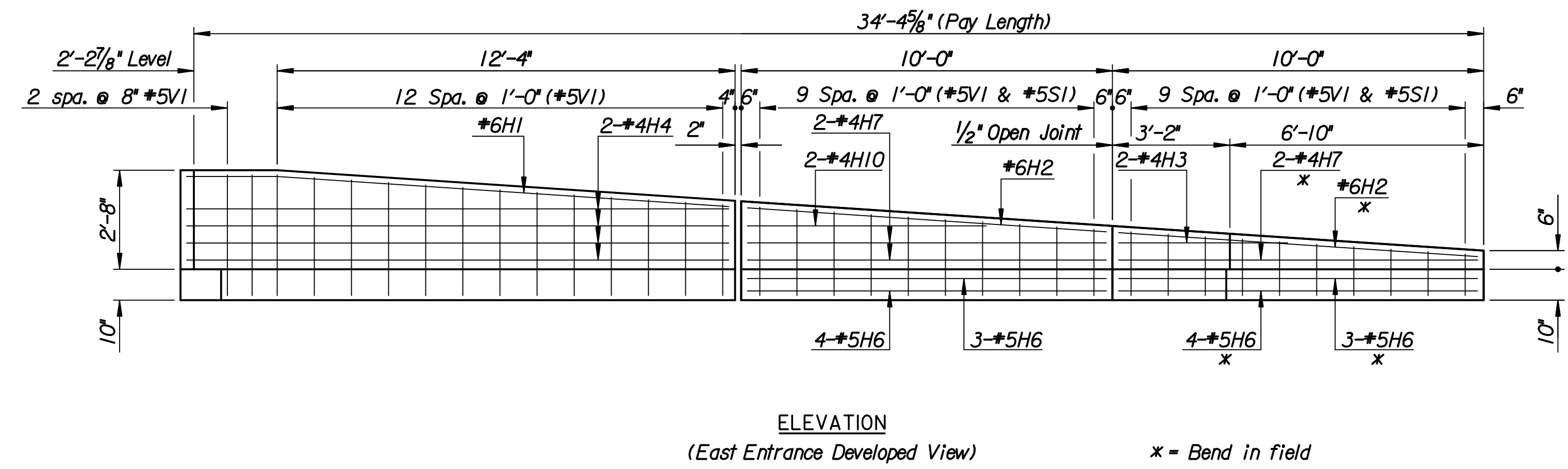
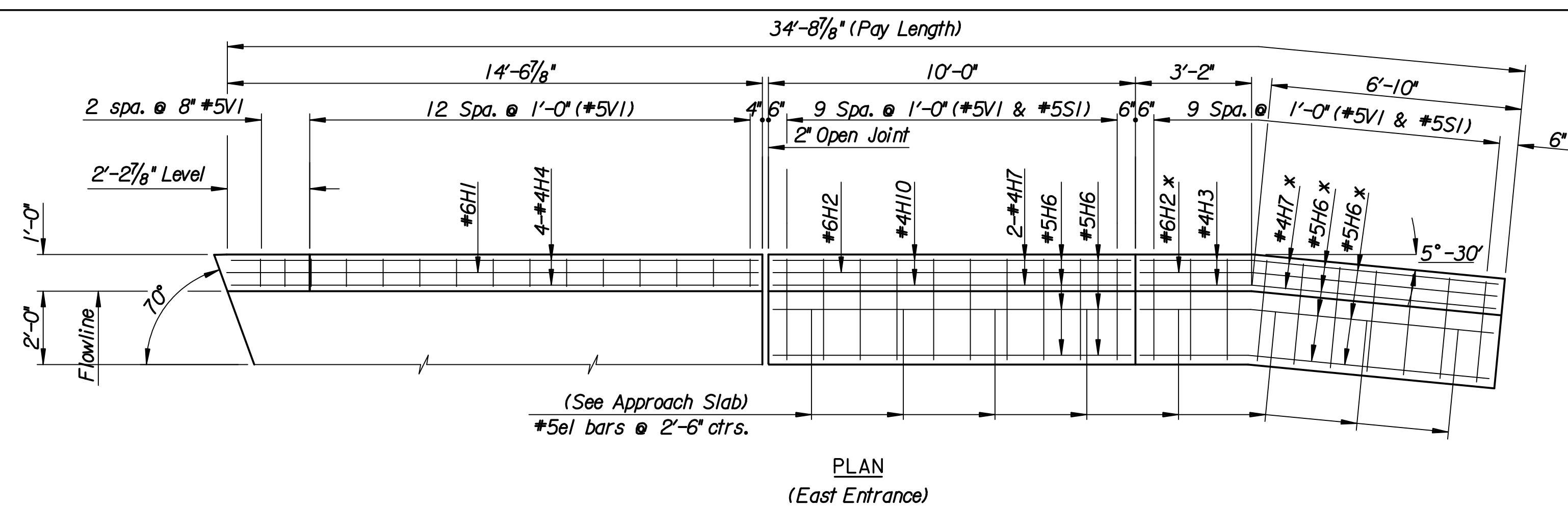
The bid item "Concrete Safety Barrier (Special) (AE)" measured per lineal foot as per plan, shall be full compensation for furnishing all materials, equipment and labor necessary.

BILL OF MATERIALS (ENTRANCE IN EAST)							
REINFORCING STEEL							
Mark	No.	Size	Length	Mark	No.	Size	Length
H1	1	6	14'-6"	H6	14	5	9'-8"
H2	2	6	9'-8"	H7	6	4	9'-8"
H3	2	4	4'-5"	H10	2	4	6'-5"
H4	8	4	14'-4"				
SI	40	5	2'-8"				
VI	35	5	Varies				

** SUMMARY OF QUANTITIES		
Item	Quantity	Unit
Concrete Grade (4.0)(AE)	3.98	C.Y.
Reinforcing Steel (Gr. 60)	678	Lbs.

*\*\* For Information Only*



\* = Bend in field

drawn by: msn  
 plotted by: msn  
 9-3-2008  
 I:\2006\06008\Final\09\_02\_2008\06008-000\_TransBarrierEntrance.dgn

No.	Revisions	By	Date

**CITY OF WICHITA**  
 BR. NO. 530400870LAR100 STA. 69+55.00  
**CONCRETE SAFETY BARRIER  
(SPECIAL) (AE) (ENTRANCE END)**  
 25TH STREET OVER LAR  
 PROJECT NO. 472-84595 SEDGWICK COUNTY

**Professional Engineering Consultants, P.A.**  
 303 S. TOPKA • WICHITA, KANSAS 67202  
 316-262-2691 • FAX 316-262-3003

Designed by	M.S.N.	Checked by	R.A.S.
Drawn by	W.L.L.	Date	Apr 11 2008
		Job No.	06008