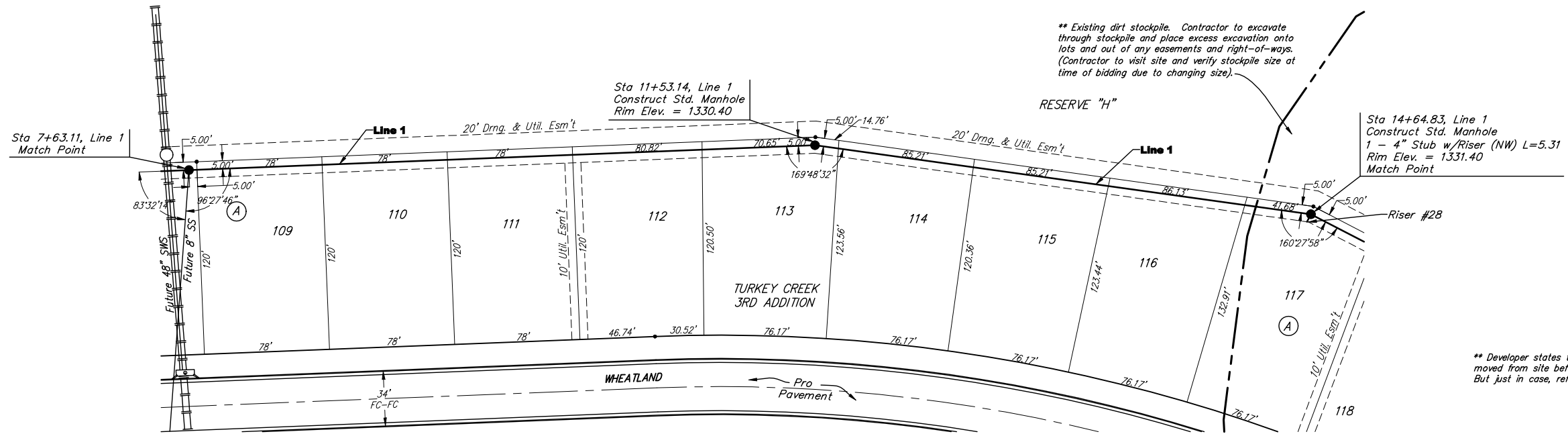


BENCHMARKS:

135th St. W. & Pawnee—
City of Wichita Benchmark
Disc on SW Corner of
Concrete Base of High Line
Pole.
Elev. = 1359.65 NGVD29

119th St. W. & Pawnee—
City of Wichita Benchmark
Disc 0.5 miles S of Kellogg.
42.2' E of centerline & 6.4"
S of Power Pole.
Elev. = 1332.09 MSL

Scale:
1" = 40' Horizontal
1" = 5' Vertical
• = Iron



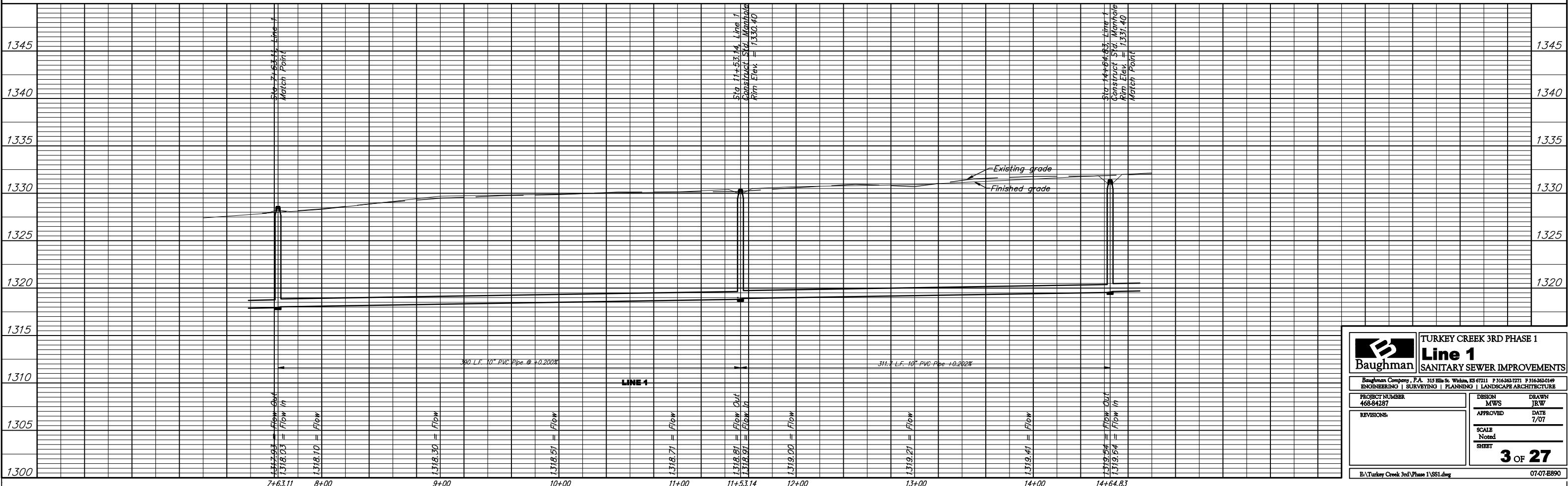
** Existing dirt stockpile. Contractor to excavate through stockpile and place excess excavation onto lots and out of any easements and right-of-ways. (Contractor to visit site and verify stockpile size at time of bidding due to changing size).

** Developer states that stockpiles should be moved from site before construction starts. But just in case, refer to above note.

SEWER SERVICE TABLE

Upstream	Down stream	NUMBER	TYPE	LOCATION			FOR INFORMATION ONLY		
				LOT NO.	BLOCK NO.	LINE NO.	STATION \ DIRECTION	APPROXIMATE LENGTH 4" PIPE	VERTICAL
356'	312'	28	4" Stub w/ Riser	117	A	1	14+64.83/Rt.	11'	5.31'

NOTE: Vertical Riser Pipe shall be extended to 2' minimum above ground water elevation and 4' maximum below proposed ground elevation.



Baughman TURKEY CREEK 3RD PHASE 1
Line 1
SANITARY SEWER IMPROVEMENTS

ENGINEERING | SURVEYING | PLANNING | LANDSCAPE ARCHITECTURE

PROJECT NUMBER: 468-84287 DESIGN: MWS DRAWN: JRW
APPROVED: DATE: 7/07

REVISIONS:

SCALE: Noted SHEET: **3 OF 27**

E:\Turkey Creek 3rd Phase 1\SS1.dwg 07-07-E890