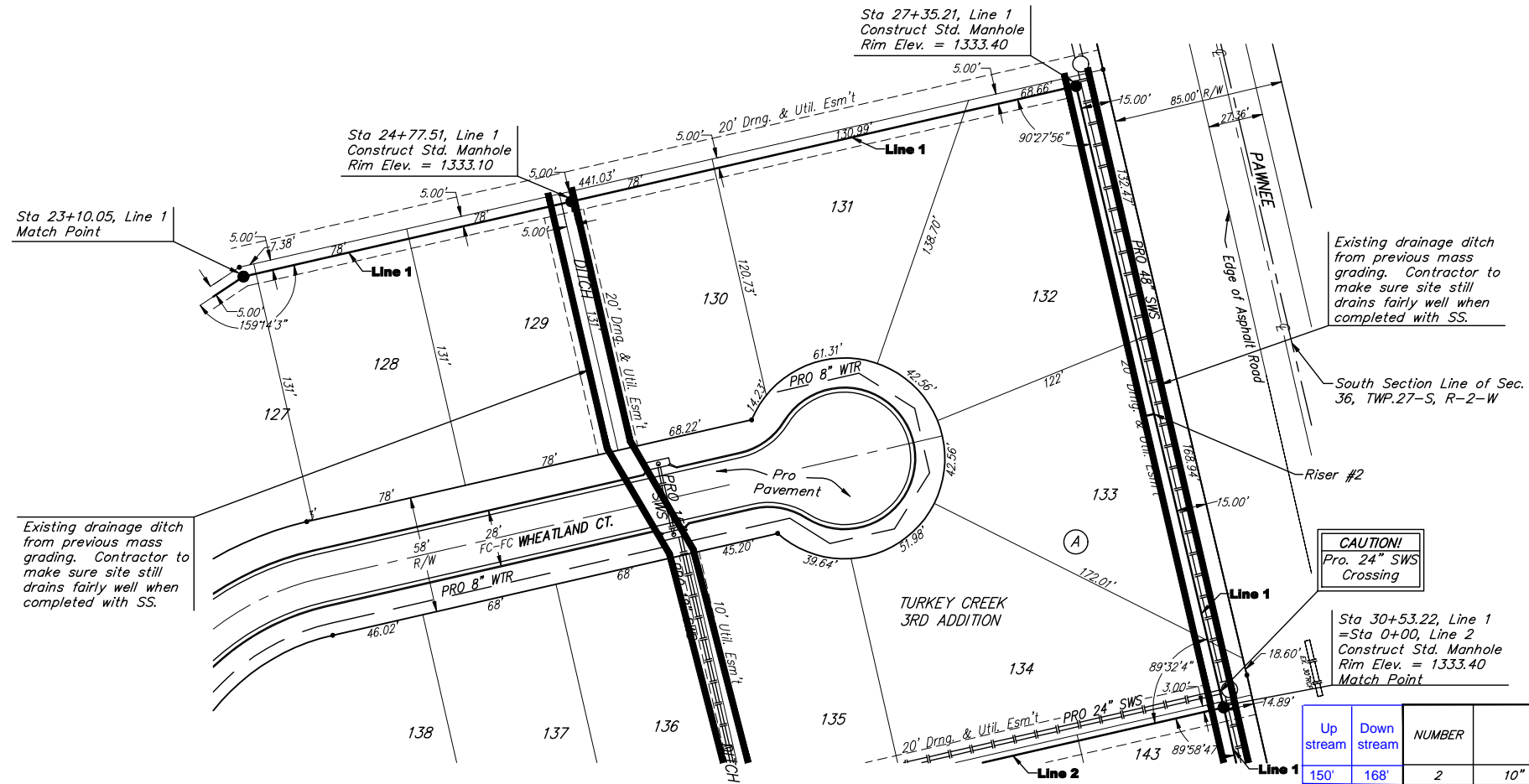
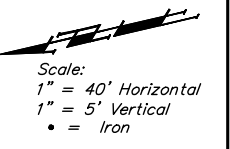


BENCHMARKS:

135th St. W. & Pawnee—
City of Wichita Benchmark
Disc on SW Corner of
Concrete Base of High Line
Pole.
Elev. = 1359.65 NGVD29

119th St. W. & Pawnee—
City of Wichita Benchmark
Disc 0.5 miles S of Kellogg.
42.2' E of centerline & 6.4"
S of Power Pole.
Elev. = 1332.09 MSL



Existing drainage ditch from previous mass grading. Contractor to make sure site still drains fairly well when completed with SS.

South Section Line of Sec. 36, TWP.27-S, R-2-W

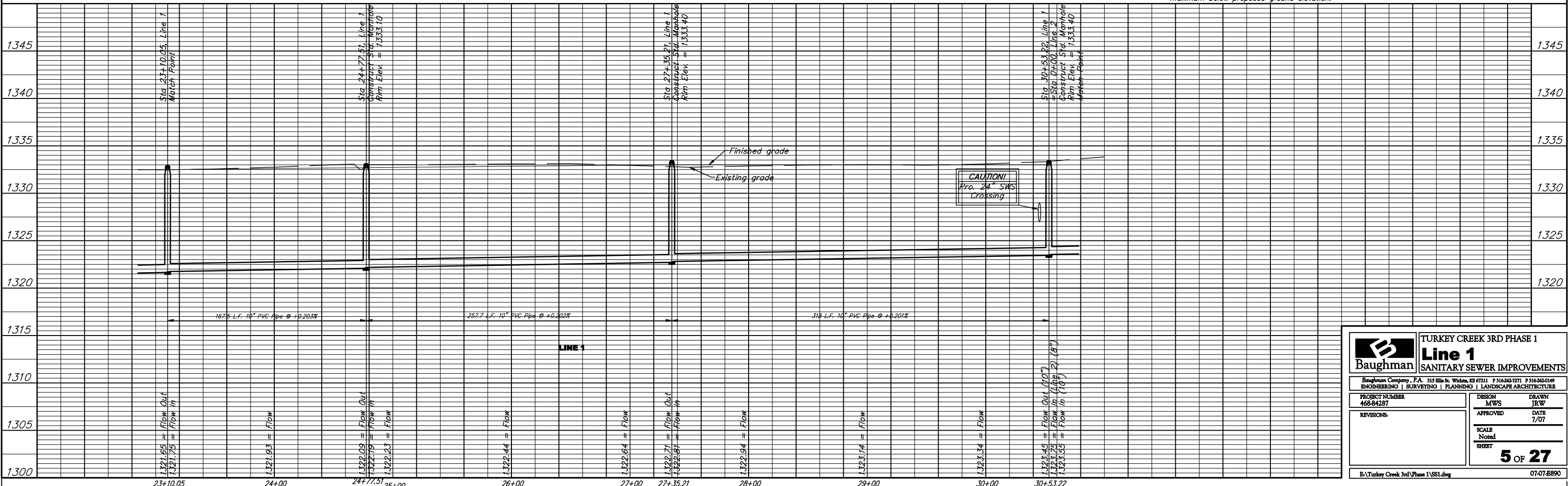
CAUTION!
Pro. 24" SWS Crossing

Sta 30+53.22, Line 1 = Sta 0+00, Line 2
Construct Std. Manhole
Rim Elev. = 1333.40
Match Point

SEWER SERVICE TABLE

Up stream	Down stream	NUMBER	TYPE	LOCATION			FOR INFORMATION ONLY		
				LOT NO.	BLOCK NO.	LINE NO.	STATION \ DIRECTION	APPROXIMATE LENGTH 4" PIPE	VERTICAL
150'	168'	2	10" X 4" Tee	133	A	1	29+03.04/Rt.	9'	5'

NOTE: Vertical Riser Pipe shall be extended to 2' minimum above ground water elevation and 4' maximum below proposed ground elevation.



Baughman TURKEY CREEK 3RD PHASE 1
Line 1
SANITARY SEWER IMPROVEMENTS

ENGINEERING | SURVEYING | PLANNING | LANDSCAPE ARCHITECTURE

PROJECT NUMBER: 468-84287
DESIGN: MWS
DRAWN: JRW

REVISIONS: []
APPROVED: []
DATE: 7/07

SCALE: Noted
SHEET: **5 OF 27**

07-07-E890