

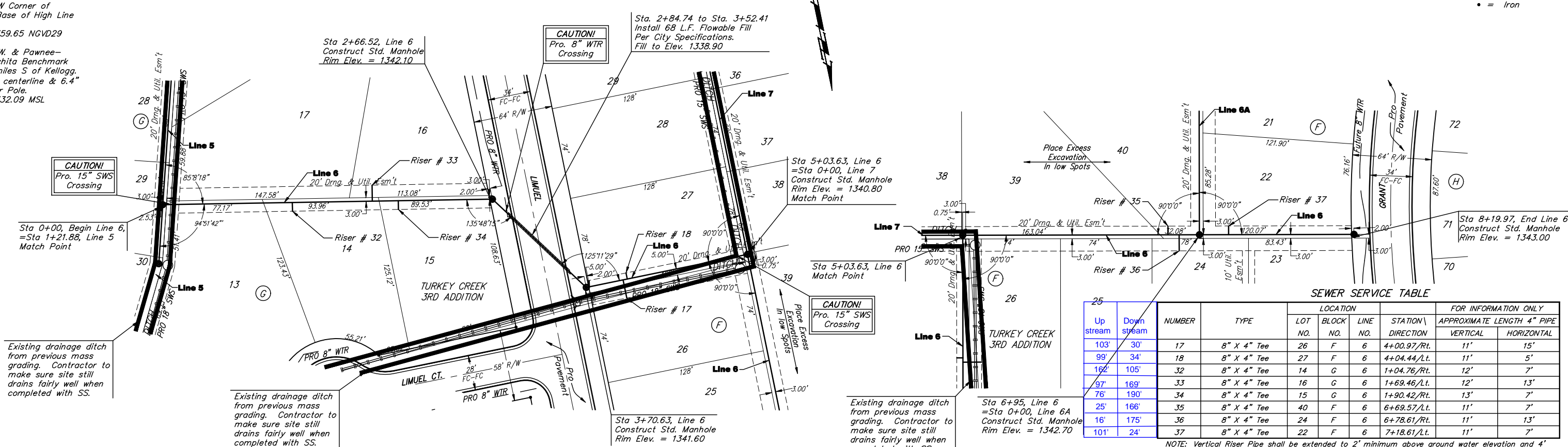
BENCHMARKS:

135th St. W. & Pawnee—
City of Wichita Benchmark
Disc on SW Corner of
Concrete Base of High Line
Pole.
Elev. = 1359.65 NGVD29

119th St. W. & Pawnee—
City of Wichita Benchmark
Disc 0.5 miles S of Kellogg.
42.2' E of centerline & 6.4'
S of Power Pole.
Elev. = 1332.09 MSL

Scale:
1" = 40' Horizontal
1" = 5' Vertical
• = Iron

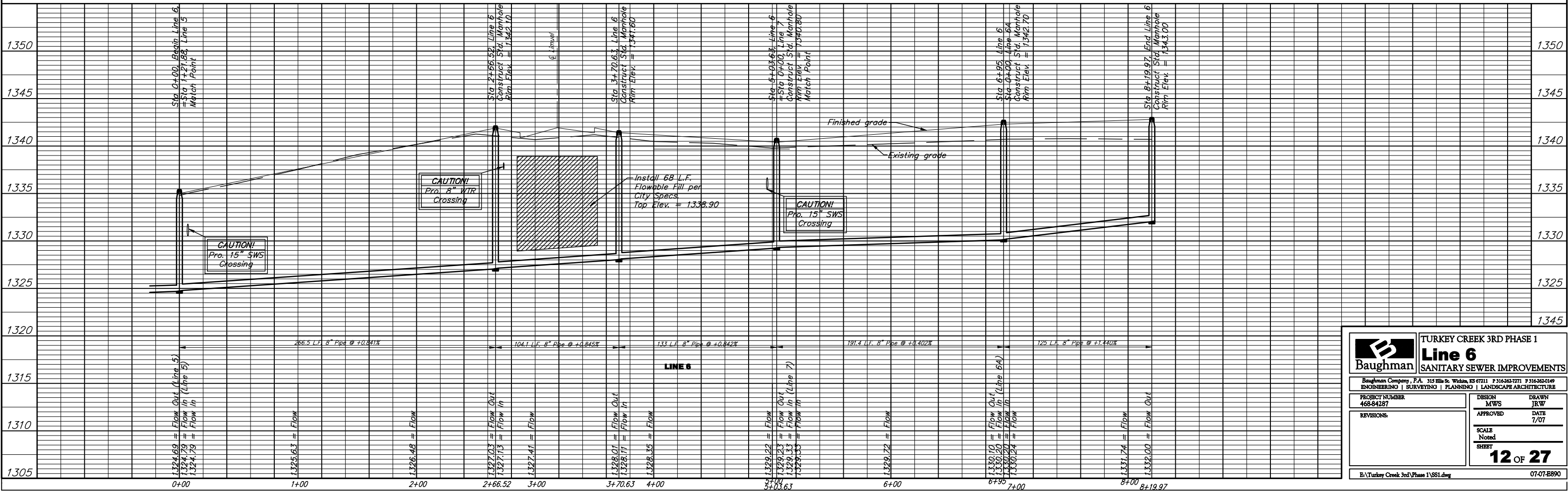
Scale:
1" = 40' Horizontal
1" = 5' Vertical
• = Iron



SEWER SERVICE TABLE

Up stream	Down stream	NUMBER	TYPE	LOCATION			FOR INFORMATION ONLY		
				LOT NO.	BLOCK NO.	LINE NO.	STATION \ DIRECTION	APPROXIMATE LENGTH 4" PIPE	
103'	30'	17	8" X 4" Tee	26	F	6	4+00.97/Rt.	11'	15'
99'	34'	18	8" X 4" Tee	27	F	6	4+04.44/Lt.	11'	5'
162'	105'	32	8" X 4" Tee	14	G	6	1+04.76/Rt.	12'	7'
97'	169'	33	8" X 4" Tee	16	G	6	1+69.46/Lt.	12'	13'
76'	190'	34	8" X 4" Tee	15	G	6	1+90.42/Rt.	13'	7'
25'	166'	35	8" X 4" Tee	40	F	6	6+69.57/Lt.	11'	7'
16'	175'	36	8" X 4" Tee	24	F	6	6+78.61/Rt.	11'	13'
101'	24'	37	8" X 4" Tee	22	F	6	7+18.61/Lt.	11'	7'

NOTE: Vertical Riser Pipe shall be extended to 2' minimum above ground water elevation and 4' maximum below proposed ground elevation.



Baughman TURKEY CREEK 3RD PHASE 1
Line 6
SANITARY SEWER IMPROVEMENTS

848-84287

PROJECT NUMBER: 468-84287
DESIGN: MWS
DRAWN: JRW

REVISIONS:
APPROVED: [Signature]
DATE: 7/07

SCALE: Noted
SHEET: 12 OF 27

07-07-E890