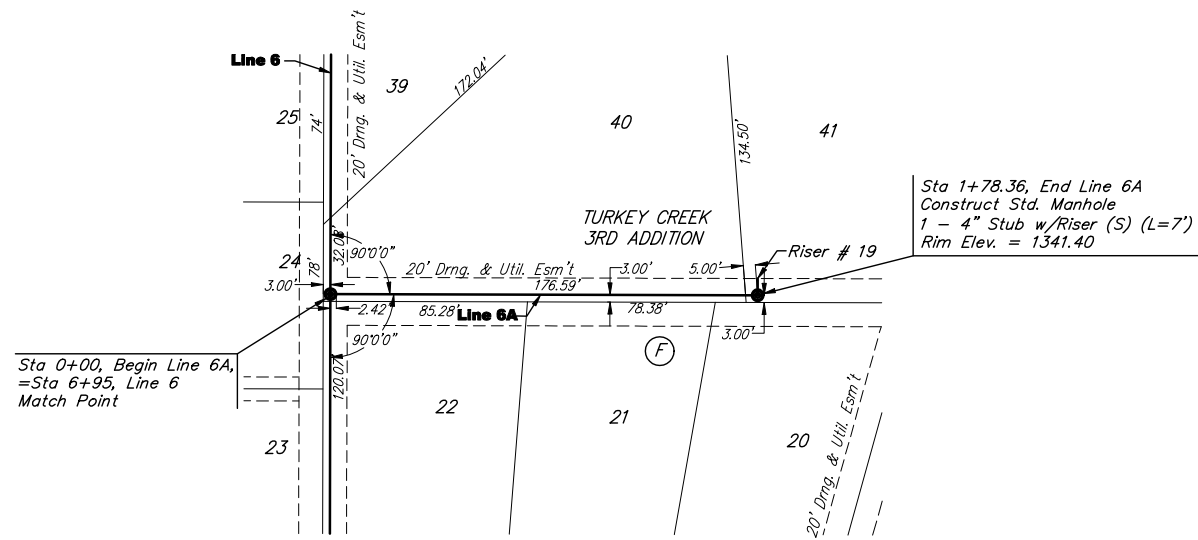


BENCHMARKS:

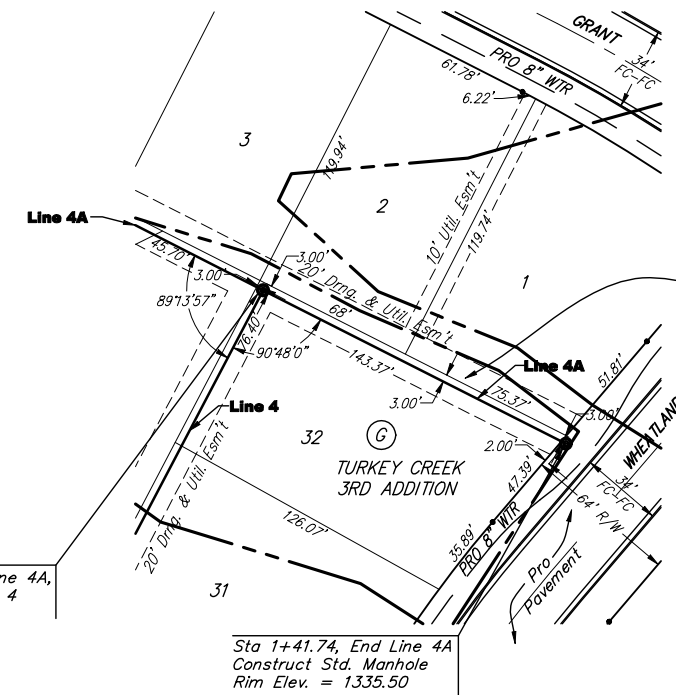
135th St. W. & Pawnee—
City of Wichita Benchmark
Disc on SW Corner of
Concrete Base of High Line
Pole.
Elev. = 1359.65 NGVD29

119th St. W. & Pawnee—
City of Wichita Benchmark
Disc 0.5 miles S of Kellogg.
42.2' E of centerline & 6.4"
S of Power Pole.
Elev. = 1332.09 MSL

Scale:
1" = 40' Horizontal
1" = 5' Vertical
• = Iron



Scale:
1" = 40' Horizontal
1" = 5' Vertical
• = Iron

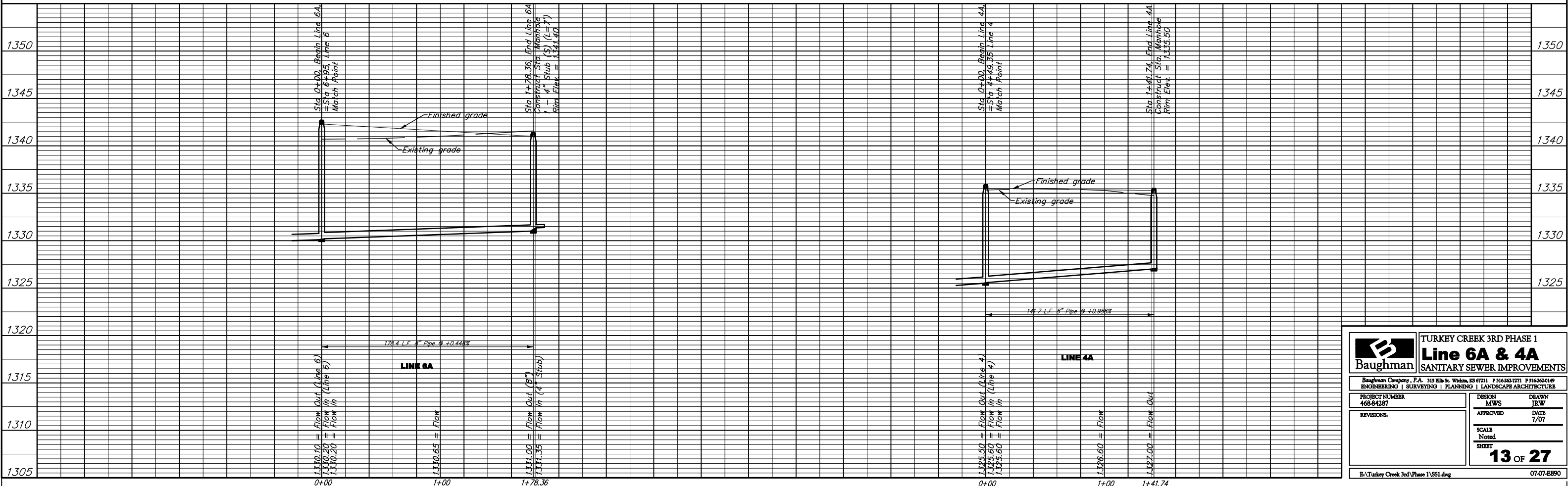


SEWER SERVICE TABLE

NUMBER	TYPE	LOCATION				FOR INFORMATION ONLY		Upstream	Downstream
		LOT NO.	BLOCK NO.	LINE NO.	STATION \ DIRECTION	APPROXIMATE LENGTH 4" PIPE VERTICAL	HORIZONTAL		
19	4" Stub w/ Riser	41	F	6A	1+78.36/Lt.	9'	7'	0	178'

NOTE: Vertical Riser Pipe shall be extended to 2" minimum above ground water elevation and 4' maximum below proposed ground elevation.

** Developer states that stockpiles should be moved from site before construction starts. But just in case, refer to above note.



Baughman TURKEY CREEK 3RD PHASE I
Line 6A & 4A
SANITARY SEWER IMPROVEMENTS

ENGINEERING | SURVEYING | PLANNING | LANDSCAPE ARCHITECTURE

PROJECT NUMBER 468-84287	DESIGN MWS	DRAWN JRW
REVISIONS	APPROVED	DATE 7/07
SCALE Noted		13 OF 27
SHEET		

E:\Turkey Creek 3rd Phase 1\SS1.dwg 07-07-E890