

GENERAL NOTES:

1. Contractor will be required to provide notice to utility companies a minimum of twenty-four (24) hours prior to any excavation, as follows:

Kansas One-Call 687-2470

The Contractor must notify the following in case of an emergency:

Cox Communications 262-4270
 Kansas Gas Service 1-888-482-4950
 Westar Energy 383-8650
 Aquila Energy 1-800-303-0357
 SBC 268-2245
 City of Wichita Water Dept. 268-4563
 City of Wichita Sewer Maint. 268-4024
 City of Wichita Storm Sewer Maint. 268-4090
 City of Wichita Traffic Maint. 268-4034
 Conoco Pipeline Co. 1-800-231-2551
 Southern Star Pipeline Co. 529-6600
 Phillips Pipeline Co. 1-800-766-8230
 Jayhawk Pipeline Co. 1-888-542-9575

2. Utility service lines, poles, valve boxes, meters, and etcetera are to be adjusted as necessary by others prior to construction unless the plans specifically call for their adjustment by the Contractor or unless the plans specifically identify a utility to be adjusted by its owner during construction. Existing utilities and their location, as shown on the plans, represent the best information obtainable for design. The Contractor will be required to work around existing utilities within the right-of-way which do not conflict with proposed construction.

3. Rubble from the removal of miscellaneous structures and excess excavation which is to be wasted shall be disposed of on sites to be provided by the Contractor. These sites shall be approved by the Engineer as to suitability, appearance and site location. Locations, in the opinion of the Engineer, that will leave an unsightly appearance will not be approved. All disposal sites must be approved by the Kansas Department of Health and Environment. Material either stockpiled or disposed of in a flood plain would require a Kansas State Board of Agriculture permit. Any material dumped in waters of the United States or wetlands is subject to U.S. Corps of Engineers permitting regulations. Any material buried or stockpiled beyond approved construction limits would require additional archaeological investigations unless buried in a previously approved borrow location.

4. Trees and shrubs in public right-of-way which are in direct conflict with proposed new construction shall be removed by the Contractor with the Engineer's approval. Trees and shrubs which are not in direct conflict with proposed new construction shall be saved and protected from damage.

5. The Contractor shall give all property owners and/or tenants of developed property abutting the construction of this project a minimum of ten (10) days advance notice prior to start of construction.

6. The Contractor shall be responsible for preserving property irons. The Contractor will be required to re-establish any property irons which are damaged or destroyed by his construction operations. Such irons shall be re-established by a licensed land surveyor in accordance with state laws.

7. All existing and proposed erosion control measures including silt fencing, erosion control mat, straw bales, inlet barriers, and const. entrance shall be maintained throughout construction by the contractor and until project is accepted by the City of Wichita. The on-site engineer shall complete weekly reports on the status of erosion control measures. The contractor shall be required to comply with maintenance and/or replacement of erosion control measures as determined by the on-site engineer until project is accepted by City of Wichita.

8. All excess excavation may be removed by the Contractor or shall remain on-site and shall be stockpiled or spread at a location determined by the engineer.

9. The Contractor shall adjust water valve boxes and fire hydrants as directed by the Engineer at the price bid for said adjustments. The Water Department shall field locate water valves one time during construction when requested by Contractor. It shall be the Contractor's responsibility to preserve such field locations during the construction process. Water valves, water valve boxes or fire hydrants damaged during construction shall be repaired by the Contractor at his own expense.

10. All water mains and appurtenances shall be installed in accordance with City of Wichita, Kansas Standard Specifications for Water Main Installations.

11. Opening and closing of water valves shall be done slowly to prevent damage to the water distributions system from water hammer. All valves closed by the contractor must be reopened as new construction permits. Project inspector must ascertain that any valve closed by the Contractor is reopened. Contractor will be permitted to operate water valves only when the project inspector assigned to the project is present.

12. All areas disturbed within U.S. 54 Highway (Kellogg) and 143rd St. East R/W during construction shall be seeded, mulched, and fertilized (Permanent and Temporary Seeding) per attached Kansas Department of Transportation Sheet. All cost associated with seeding shall be incidental to bid item "Project Seeding".

13. All Costs associated with Traffic Control shall be incidental to Lump Sum Bid Item "Site Clearing and Restoration".

14. The developer for this project is Taylor Enterprises, Inc. and may be contacted via Dan Taylor, JR. @ (316) 634-3321.

WATER DISTRIBUTION SYSTEM

to serve

PRAIRIE POND PLAZA 2ND ADDITION

CITY OF WICHITA, KANSAS

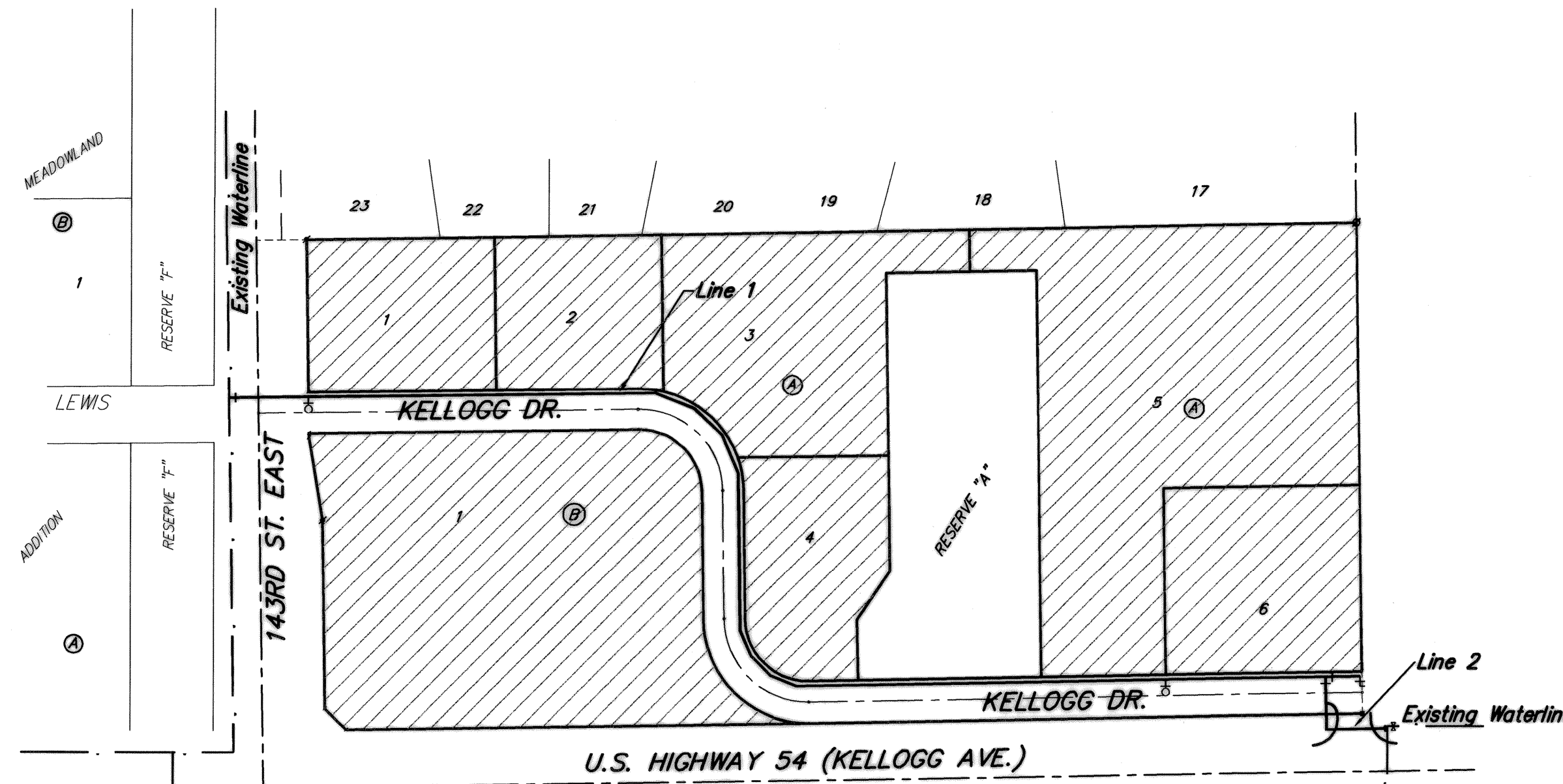
James L. Armour, P.E. City Engineer

Project Number

448-90372

O.C.A. Number

735416



Benchmarks

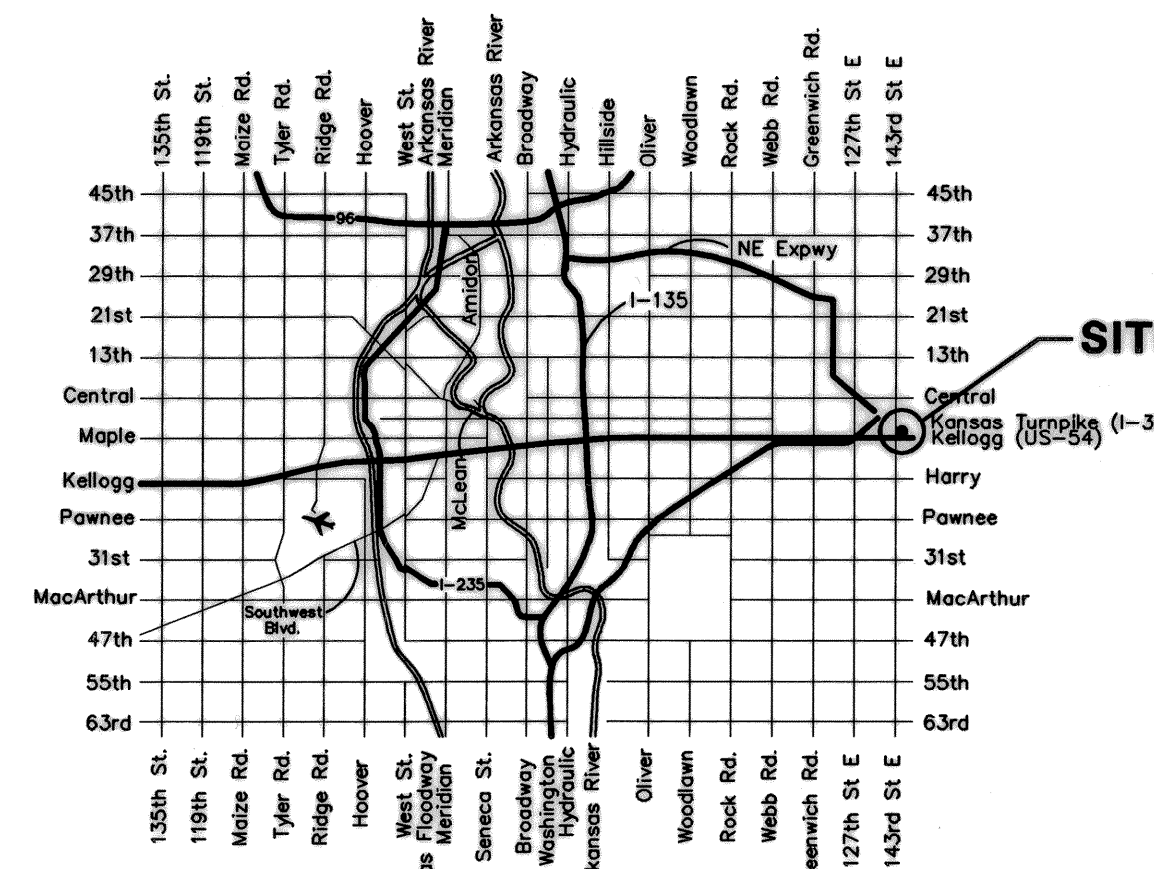
"□" cut on traffic signal light pole base, NW corner of Kellogg & 143rd Street East. Elev. = 1318.61 NGVD (131.21 City Datum)

Scale: 1" = 150'

Sheet Index

Title Sheet	1
Water Detail Sheet	2
Line 1	3-4
Line 2	5
Erosion Control Plan	6
Erosion Control Details	7-10
KDOT Seeding Specifications	11
Coordinate Sheet	12
Copy of Plat	13

Benefit District



Vicinity Map



Baughman Company, P.A. 315 Ellis St. Wichita, KS 67211 P 316-262-7271 F 316-262-0149
 ENGINEERING | SURVEYING | PLANNING | LANDSCAPE ARCHITECTURE