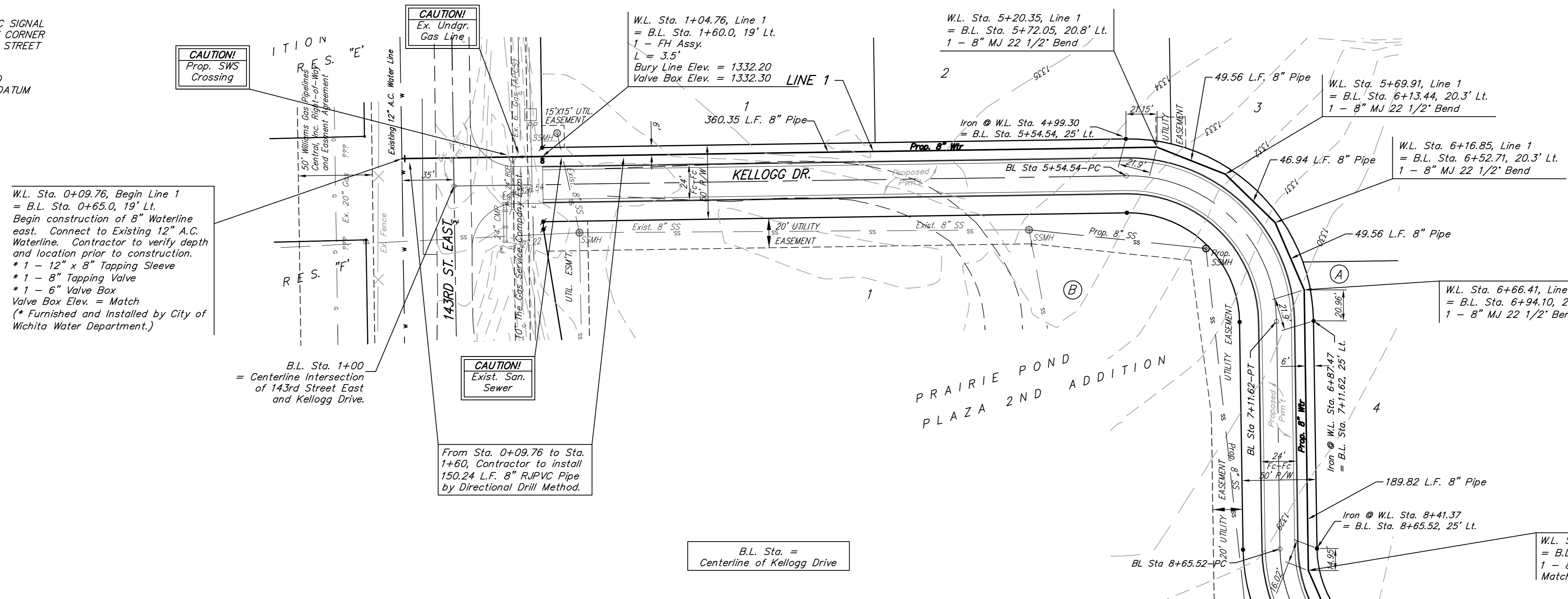


**BENCHMARK:**  
 "□" CUT ON TRAFFIC SIGNAL  
 LIGHT POLE BASE, NW CORNER  
 OF KELLOGG & 143RD STREET  
 EAST.

ELEV. = 1318.61 NGVD  
 ELEV. = 131.21 CITY DATUM

Scale: 1" = 40' Horizontal  
 1" = 5' Vertical  
 • = Iron



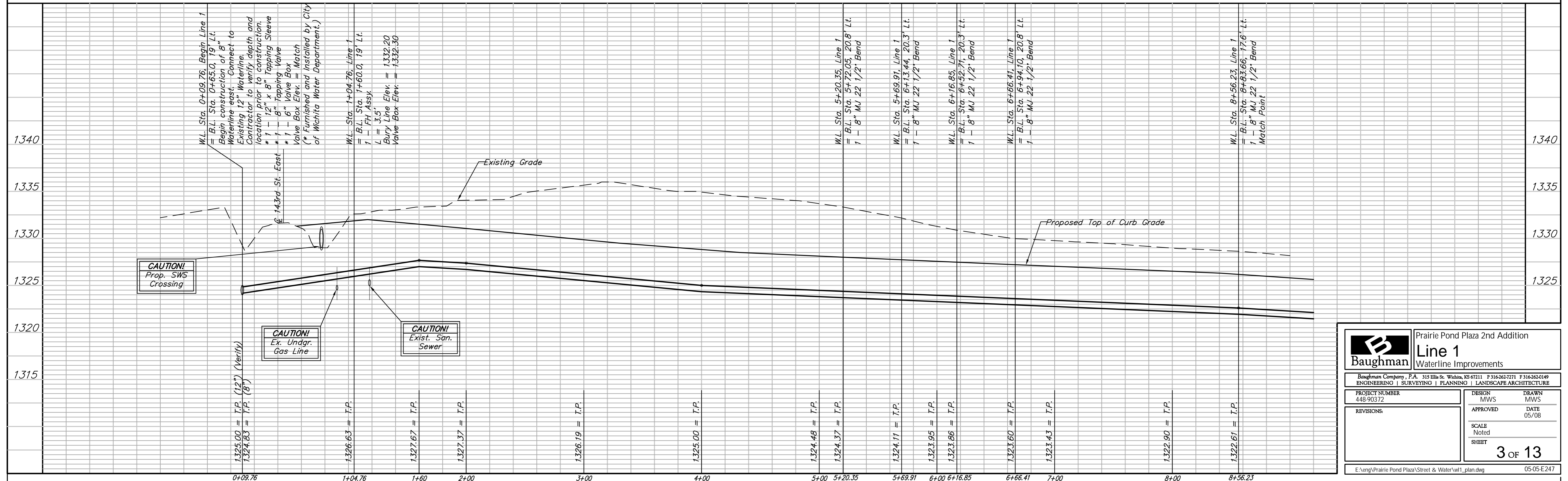
W.L. Sta. 0+09.76, Begin Line 1  
 = B.L. Sta. 0+65.0, 19' Lt.  
 Begin construction of 8" Waterline  
 east. Connect to Existing 12" A.C.  
 Waterline. Contractor to verify depth  
 and location prior to construction.  
 \* 1 - 12" x 8" Tapping Sleeve  
 \* 1 - 8" Tapping Valve  
 \* 1 - 6" Valve Box  
 Valve Box Elev. = Match  
 (\* Furnished and Installed by City of  
 Wichita Water Department.)

B.L. Sta. 1+00  
 = Centerline Intersection  
 of 143rd Street East  
 and Kellogg Drive.

From Sta. 0+09.76 to Sta.  
 1+60, Contractor to install  
 150.24 L.F. 8" RUPVC Pipe  
 by Directional Drill Method.

B.L. Sta. =  
 Centerline of Kellogg Drive

All excess excavation may be  
 removed by the Contractor or  
 shall remain on-site and shall  
 be stockpiled or spread at a  
 location determined by the  
 engineer.



		Prairie Pond Plaza 2nd Addition <b>Line 1</b> Waterline Improvements	
Baughman Company, P.A. 315 Ellis St. Wichita, KS 67211 F 316-262-7271 F 316-262-0149 ENGINEERING   SURVEYING   PLANNING   LANDSCAPE ARCHITECTURE			
PROJECT NUMBER 448-90372	DESIGN MWS	DRAWN MWS	DATE 05/08
REVISIONS:	APPROVED	SCALE Noted SHEET	<b>3 OF 13</b>
E:\eng\Prairie Pond Plaza\Street & Water\wl1_plan.dwg			05-05-E247