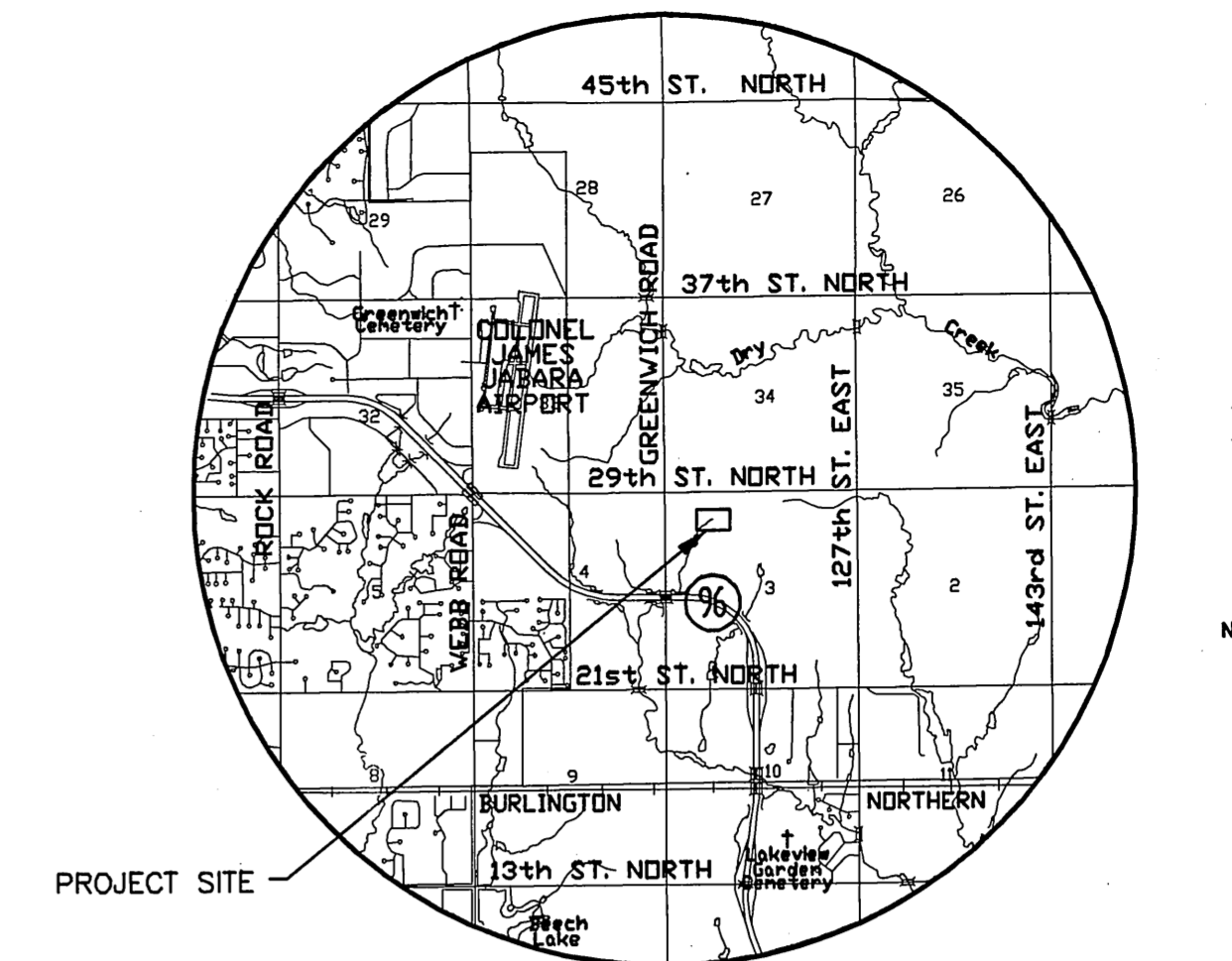


PAVING PLANS AND INCIDENTAL DRAINAGE FOR

WEST PARKING LOT EXPANSION STRYKER SOCCER COMPLEX

THE CITY OF WICHITA
SEDGWICK COUNTY, KANSAS
PROJECT NO. 472-84573
JAMES L. ARMOUR, P.E., CITY ENGINEER
OCA 785066



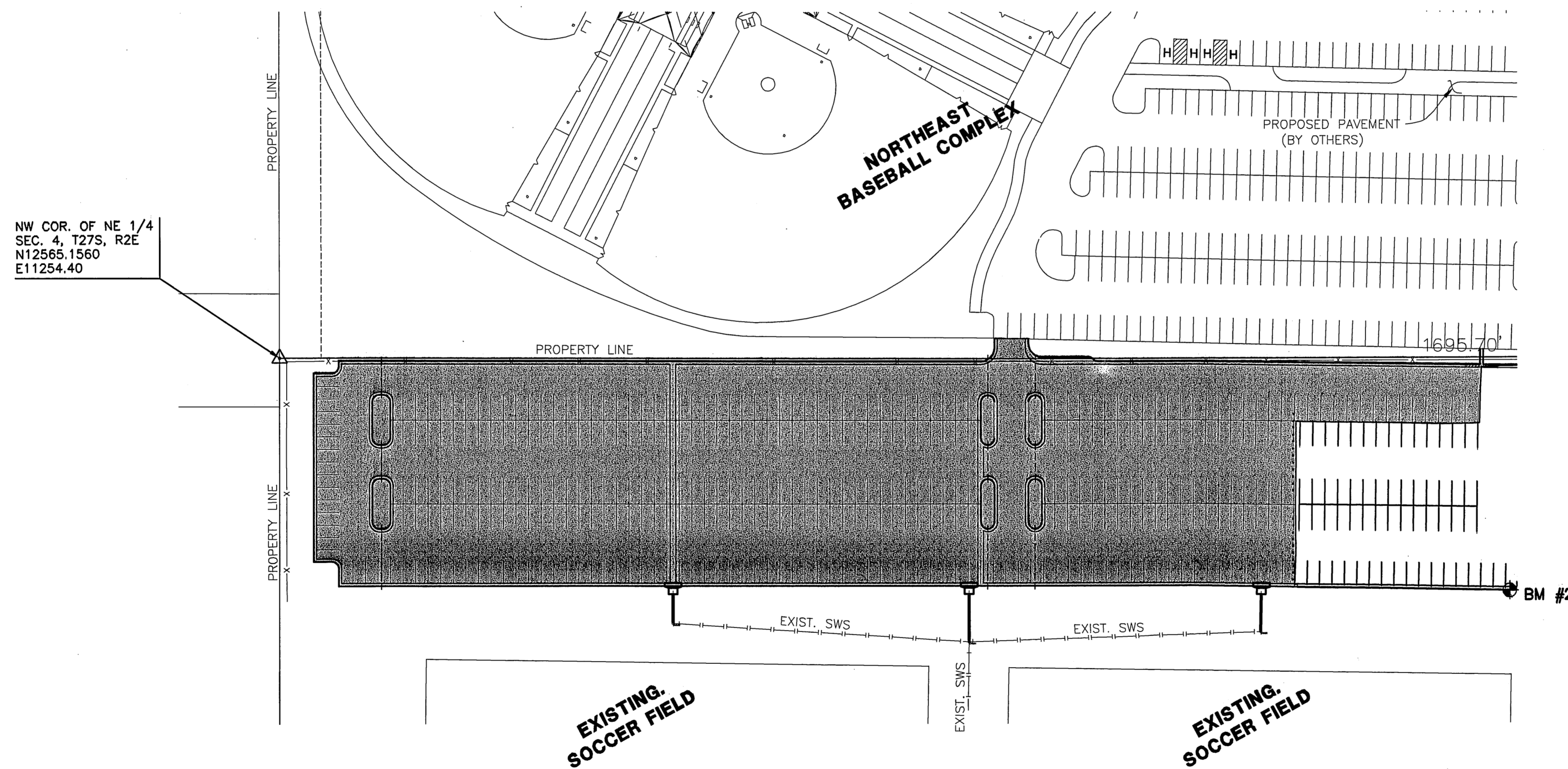
LOCATION MAP

INDEX TO DRAWINGS

SHEET NO.	DESCRIPTION
1	TITLE SHEET
2	GRADING PLAN
3	PAVING PLAN
4	PAVING DETAILS
5	SWS DETAILS
6	EROSION CONTROL PLAN
7-11	BMP DETAILS
12	FINAL PLAT

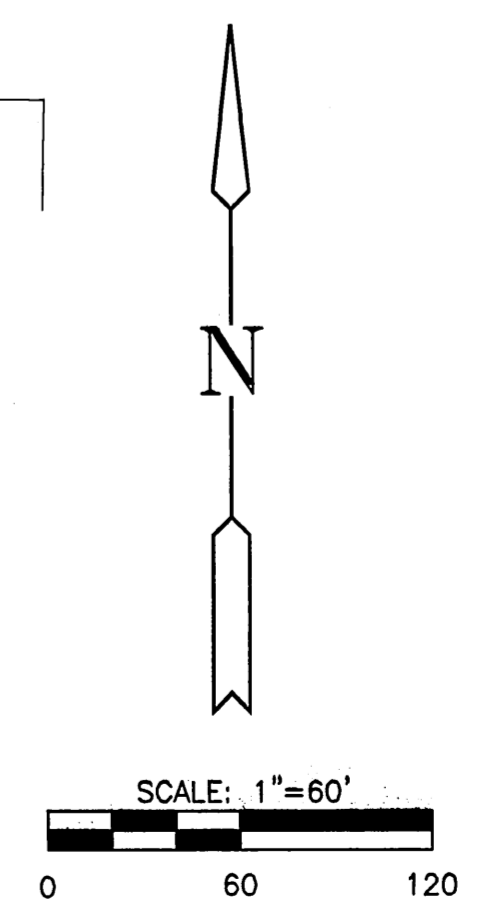
BENCHMARKS

- BM#1 CHISELED "L" ON THE TOP OF CURB AT THE POINT OF CURVATURE ON THE WEST LINE OF LOT 3, BLOCK 2 EAST SIDE OF REGENCY PARK. ELEV.=199.67
- BM#2 CHISELED "L" ON THE TOP OF CURB AT THE SOUTHEAST CORNER OF THE EXISTING PARKING LOT BY AN EXISTING FIRE HYDRANT. ELEV.=201.19



LEGEND

PROPOSED PAVEMENT



MKEC
ENGINEERING
CONSULTANTS, INC.
411 N. WEBB ROAD
WICHITA, KS. 67206
316-684-9600



**WEST PARKING LOT EXPANSION
STRYKER SOCCER COMPLEX**
LOT 8, BLOCK 1 REGENCY PARK ADDITION

TITLE SHEET
SHEET TITLE
07068
PROJECT NUMBER

SRS / MKEC / MAB
DRAWN / CHECKED

ISSUED
JUNE 2007
REVISED

SHEET NO.
1 of 12