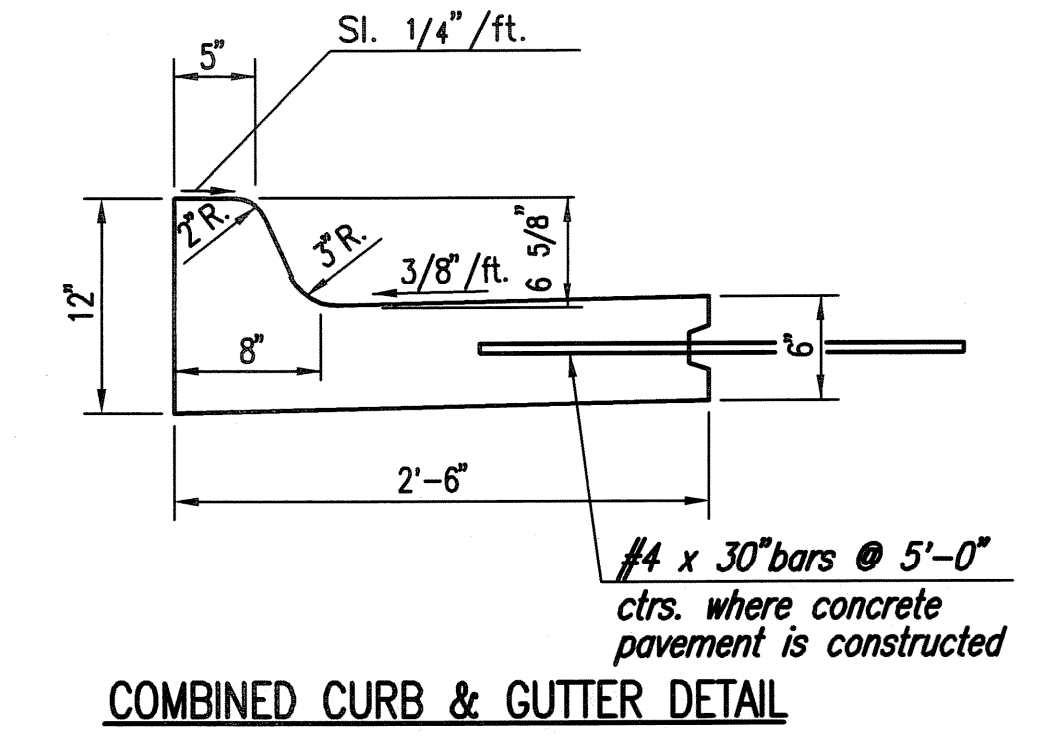


FILL

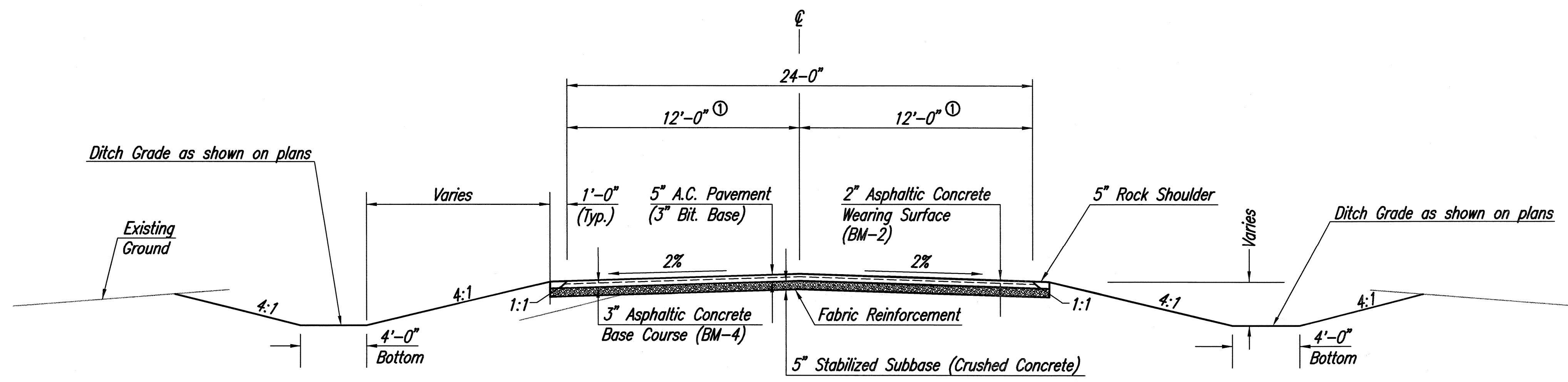
K-96 LAKE ROAD

STA. 12+87.16 to STA. 15+50
 STA. 23+00 to STA. 32+50
 STA. 33+50 to STA. 38+00

CUT



COMBINED CURB & GUTTER DETAIL

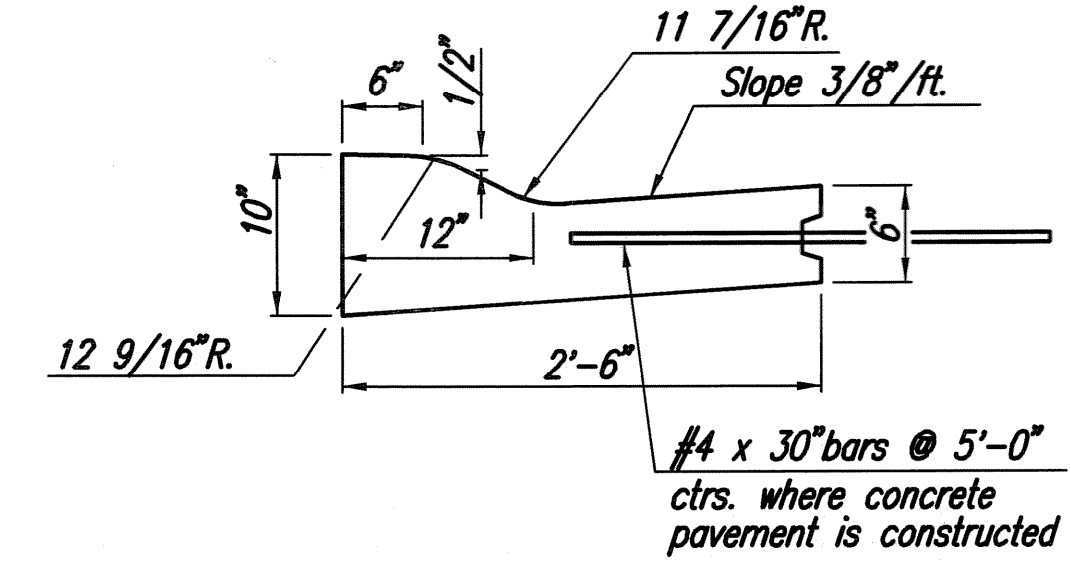


Ditch Grade as shown on plans

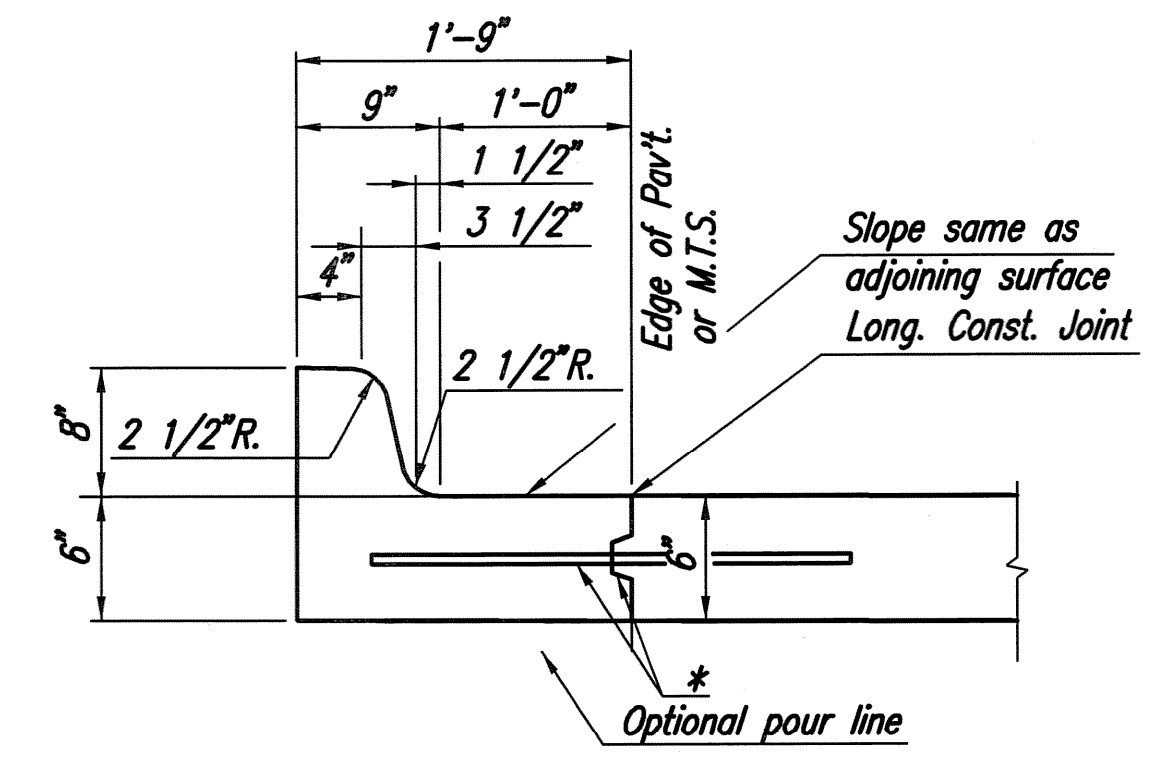
K-96 LAKE ROAD

STA. 15+50 to STA. 23+00
 STA. 32+50 to STA. 33+50
 STA. 38+00 to STA. 39+29.28

① Varies from 12'-0" at Sta. 38+79.28 to 15'-0" at Sta. 39+29.28

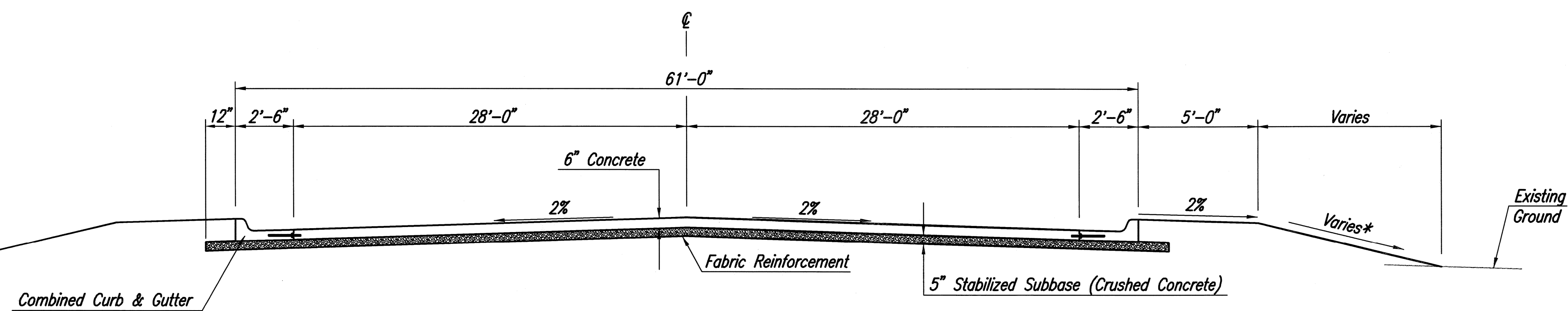


COMBINED ROLL TYPE CURB AND GUTTER



COMBINED CURB AND GUTTER - MEDIAN

* Longitudinal construction joint and #4x3'-0" bars @ 5'-0" ctrs. where concrete pavement is constructed.



CONCRETE PARKING LOT

* See Plans for variations

Sheet 08-16-0008 2:17:20 PM by BMM
 P. 08-16-0008 2:21:31 PM
 03/2008 (08160) 2008-08-14 from Tulsa 08160-000-C-TypesSections

	No.	Revision	By	Date
	K-96 LAKE ROAD PAVING AND INCIDENTAL DRAINAGE IMPROVEMENTS TYPICAL SECTIONS JAMES L. ARMOUR, P.E. - CITY ENGINEER CITY OF WICHITA PROJECT NO. 472-84737			
	Professional Engineering Consultants, P.A. 303 S. TOPEKA • WICHITA, KANSAS 67202 316-262-2691 • FAX 316-262-3003			
	Designed by	BMM	Job No.	35-08160-000
Drawn by	BJS, TAT	Date	March 2008	