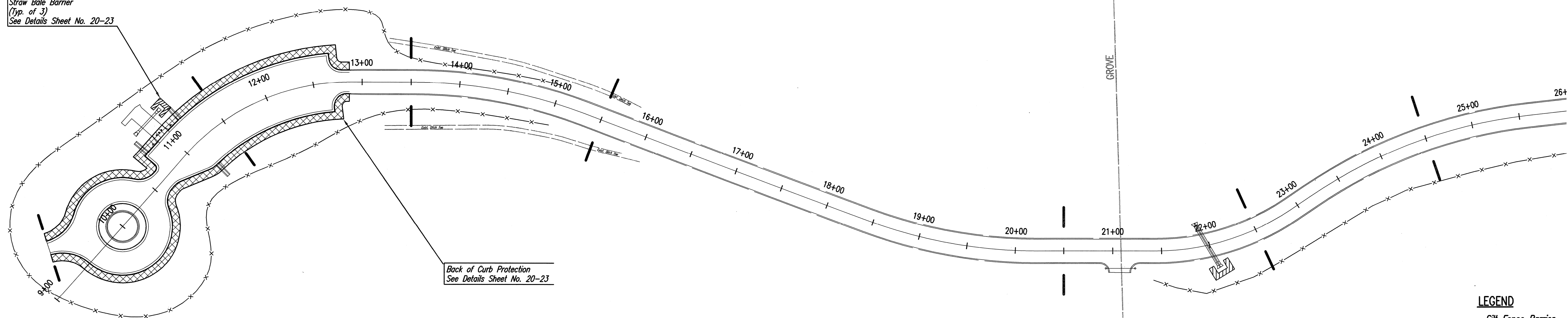


Straw Bale Barrier
(Typ. of 3)
See Details Sheet No. 20-23



Back of Curb Protection
See Details Sheet No. 20-23

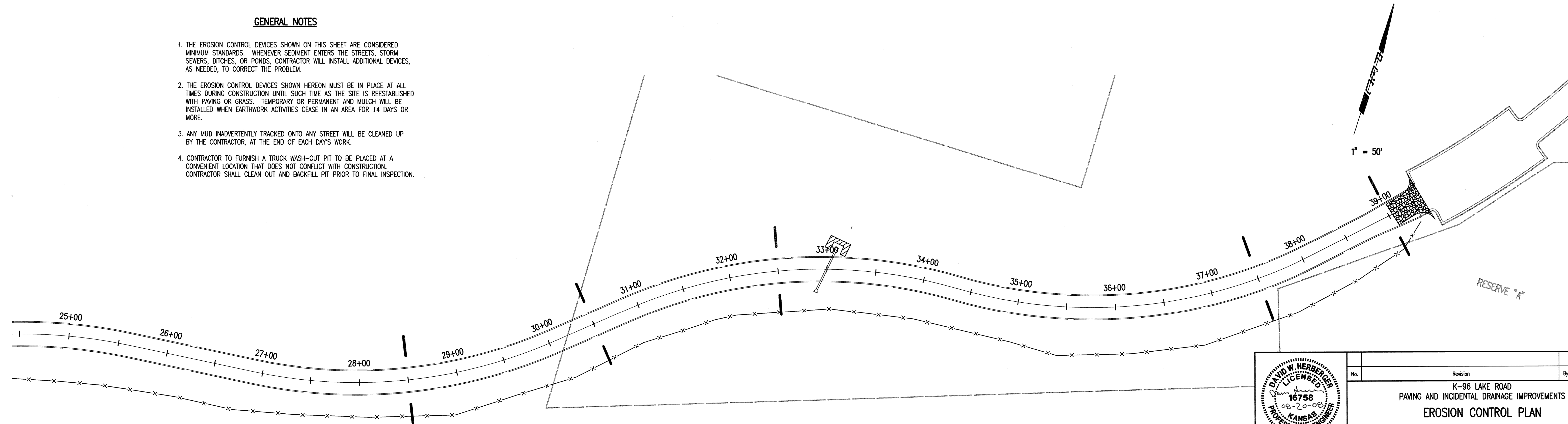
1" = 50'

LEGEND

- Silt Fence Barrier
- Curb Inlet Protection
- Area Inlet Protection
- Back of Curb Protection
- Straw Bale Barrier
- Ditch Check
- Stabilized Construction Entrance

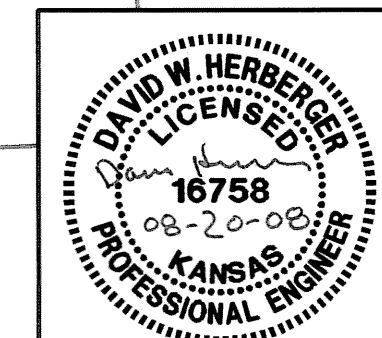
GENERAL NOTES

1. THE EROSION CONTROL DEVICES SHOWN ON THIS SHEET ARE CONSIDERED MINIMUM STANDARDS. WHENEVER SEDIMENT ENTERS THE STREETS, STORM SEWERS, DITCHES, OR PONDS, CONTRACTOR WILL INSTALL ADDITIONAL DEVICES, AS NEEDED, TO CORRECT THE PROBLEM.
2. THE EROSION CONTROL DEVICES SHOWN HEREON MUST BE IN PLACE AT ALL TIMES DURING CONSTRUCTION UNTIL SUCH TIME AS THE SITE IS REESTABLISHED WITH PAVING OR GRASS. TEMPORARY OR PERMANENT AND MULCH WILL BE INSTALLED WHEN EARTHWORK ACTIVITIES CEASE IN AN AREA FOR 14 DAYS OR MORE.
3. ANY MUD INADVERTENTLY TRACKED ONTO ANY STREET WILL BE CLEANED UP BY THE CONTRACTOR, AT THE END OF EACH DAYS WORK.
4. CONTRACTOR TO FURNISH A TRUCK WASH-OUT PIT TO BE PLACED AT A CONVENIENT LOCATION THAT DOES NOT CONFLICT WITH CONSTRUCTION. CONTRACTOR SHALL CLEAN OUT AND BACKFILL PIT PRIOR TO FINAL INSPECTION.



1" = 50'

Saved 08-18-2008 3:25:22 PM by BMM
 01/2008 (08160)2008-08-14 2008 2:08:25 PM
 01/2008 (08160)2008-08-14 from Tulsa 08160-000-C-ErosionControlPlan



No.	Revision	By	Date
K-96 LAKE ROAD PAVING AND INCIDENTAL DRAINAGE IMPROVEMENTS EROSION CONTROL PLAN JAMES L. ARMOUR, P.E. - CITY ENGINEER CITY OF WICHITA PROJECT NO. 472-84737 Professional Engineering Consultants, P.A. 303 S. TOPEKA • WICHITA, KANSAS 67202 316-262-2691 • FAX 316-262-3003			
Designed by	BMM	Job No.	35-08160-000
Drawn by	BJS, TAT	Date	March 2008
			Sheet 19 of 29