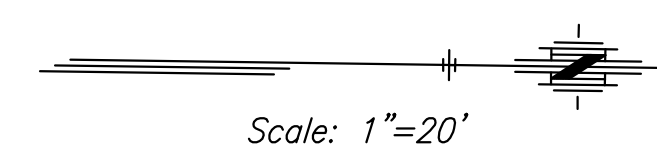


P.O.T. Sta. 2+00.00
1. N=1677432.997, E=1665542.709

P.I. Sta. 3+63.24
1. N=1677596.220, E=1665540.376

P.I. Sta. 6+83.27
1. N=1677916.245, E=1665539.804

STATE	PROJECT NO.	YEAR	SHEET NO.	TOTAL SHEETS
KANSAS	87 N-0357-01	2008	8	185



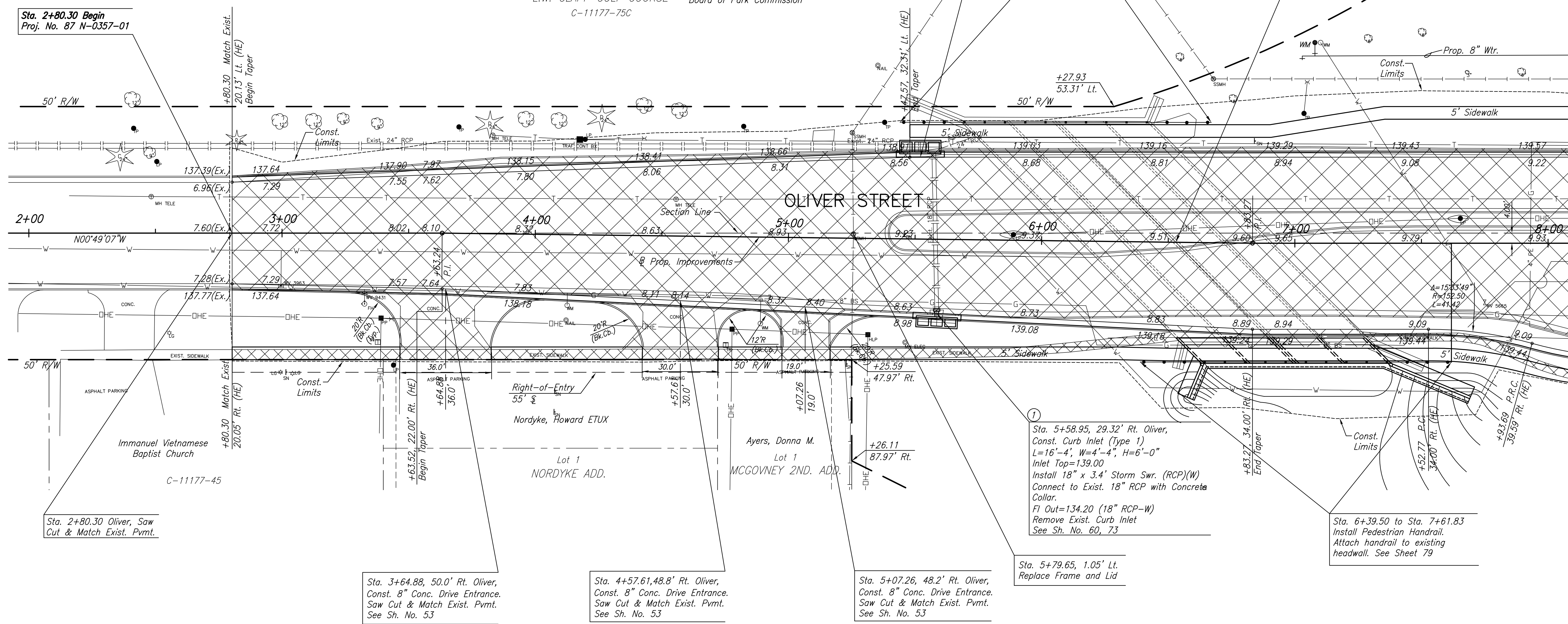
Sta. 5+51.68, 32.36' Lt. Oliver,
Const. Curb Inlet (Type 1)
L=16'-4", W=5'-4", H=9'-6"
Inlet Top=138.91
Connect Exist. 18" RCP(E), 24" RCP(S)
and 24" RCP(NW) to Inlet.
FI In=130.40 (Exist. 18" RCP-E)
FI In=130.40 (Exist. 24" RCP-S)
FI Out=130.30 (Exist. 24" RCP-NW)
Remove Exist. Curb Inlet
See Sh. No. 60

Sta. 5+43.50 to Sta. 6+66.41
Install Pedestrian Handrail.
Attach handrail to existing
headwall. See Sheet 79

Sta. 6+52.98 Extend
Exist. 4-12'x9' R.C.B Grade Box, 7.9' Rt.
See Sh. No. 74-81

Sta. 2+80.30 Begin
Proj. No. 87 N-0357-01

L.W. CLAPP GOLF COURSE Board of Park Commission
C-11177-75C



Sta. 2+80.30 Oliver, Saw
Cut & Match Exist. Pvmt.

Sta. 3+64.88, 50.0' Rt. Oliver,
Const. 8" Conc. Drive Entrance.
Saw Cut & Match Exist. Pvmt.
See Sh. No. 53

Sta. 4+57.61, 48.8' Rt. Oliver,
Const. 8" Conc. Drive Entrance.
Saw Cut & Match Exist. Pvmt.
See Sh. No. 53

Sta. 5+07.26, 48.2' Rt. Oliver,
Const. 8" Conc. Drive Entrance.
Saw Cut & Match Exist. Pvmt.
See Sh. No. 53

Sta. 5+79.65, 1.05' Lt.
Replace Frame and Lid

Sta. 5+58.95, 29.32' Rt. Oliver,
Const. Curb Inlet (Type 1)
L=16'-4", W=4'-4", H=6'-0"
Inlet Top=139.00
Install 18" x 3.4' Storm Swr. (RCP)(W)
Connect to Exist. 18" RCP with Concrete
Collar.
FI Out=134.20 (18" RCP-W)
Remove Exist. Curb Inlet
See Sh. No. 60, 73

Sta. 6+39.50 to Sta. 7+61.83
Install Pedestrian Handrail.
Attach handrail to existing
headwall. See Sheet 79

LEGEND

- Pavement Removal
- 2" Pavement Milling & Overlay
- Pavement Widening
- Construct Wheelchair Ramp See Sht. No. 56

J:\Civil\04221\dwg\pav\04221_e01.dwg 2/21/2008 1:42:16 PM CST
KANSAS DEPARTMENT OF TRANSPORTATION
OLIVER IMPROVEMENTS
STA. 2+00 TO STA. 8+00
PROJECT NO. 87 N-0357-01 SEDGWICK CO.
M K E C ENGINEERING CONSULTANTS, INC.
WICHITA, KANSAS

DESIGNED BY: LAC	CHECKED BY: JRA
DRAWN BY: WNJ	DATE: 4/07/05 SHEET 8 OF 185