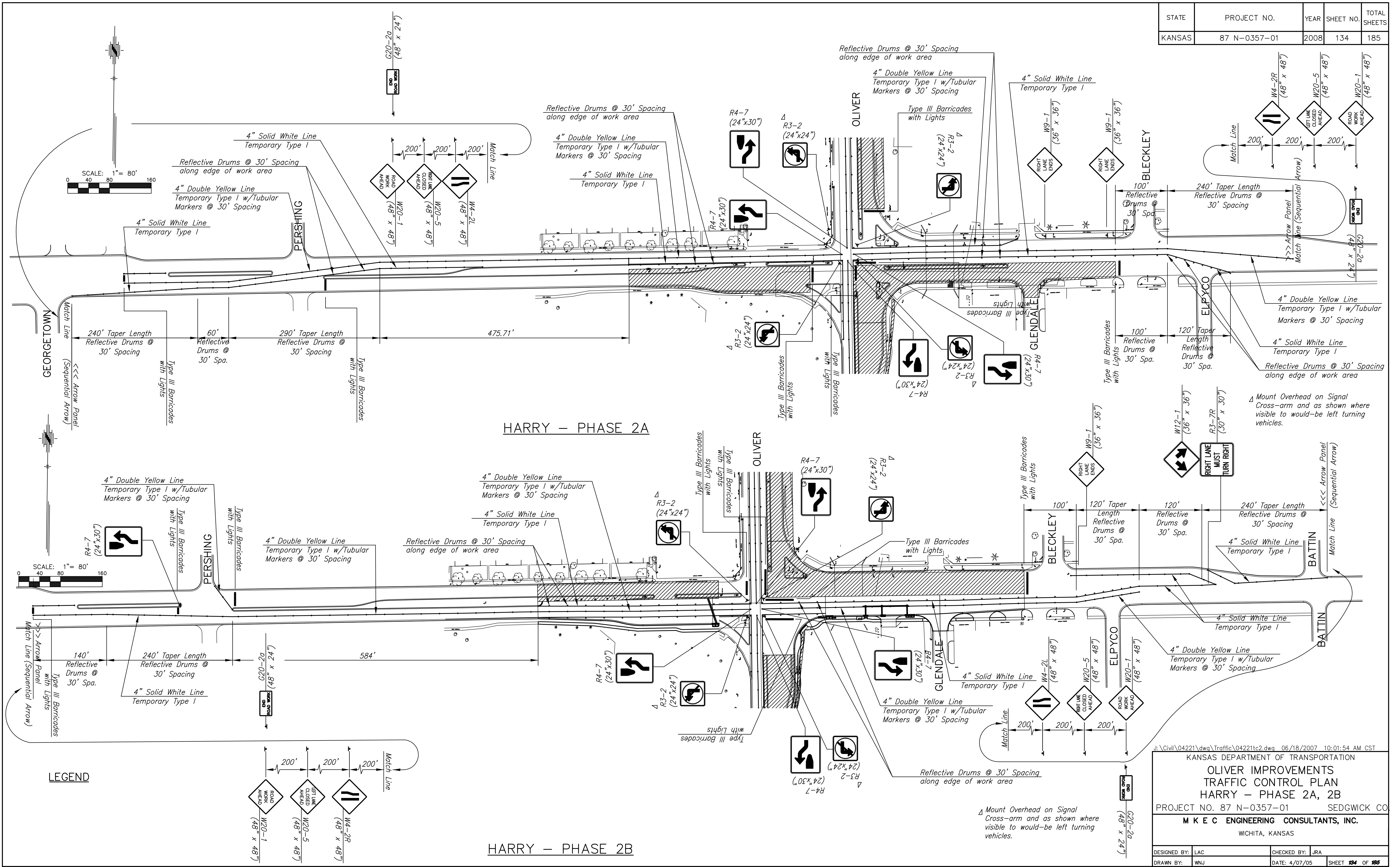


STATE	PROJECT NO.	YEAR	SHEET NO.	TOTAL SHEETS
KANSAS	87 N-0357-01	2008	134	185



J:\Civil\04221\dwg\Traffic\04221tc2.dwg 06/18/2007 10:01:54 AM CST

KANSAS DEPARTMENT OF TRANSPORTATION

**OLIVER IMPROVEMENTS  
TRAFFIC CONTROL PLAN  
HARRY - PHASE 2A, 2B**

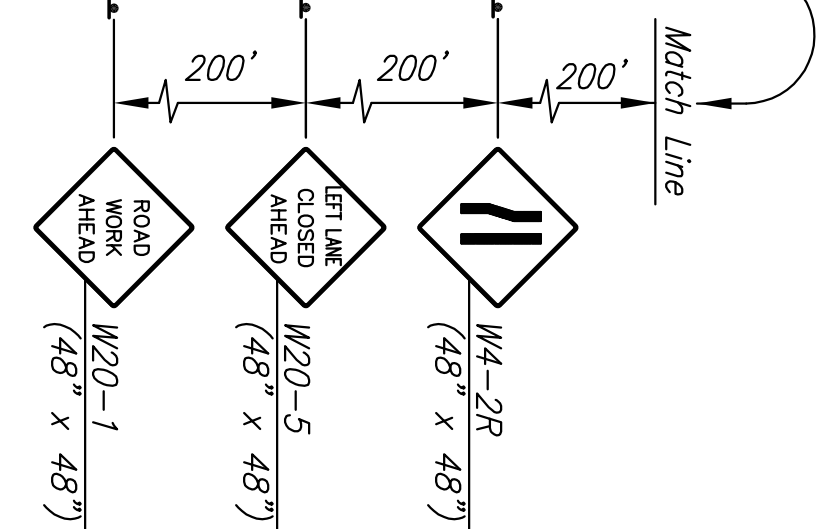
PROJECT NO. 87 N-0357-01 SEDGWICK CO

**M K E C ENGINEERING CONSULTANTS, INC.**  
WICHITA, KANSAS

DESIGNED BY: LAC	CHECKED BY: JRA
DRAWN BY: WNJ	DATE: 4/07/05

SHEET 134 OF 185

**LEGEND**



△ Mount Overhead on Signal Cross-arm and as shown where visible to would-be left turning vehicles.