

STATE	PROJECT NO.	YEAR	SHEET NO.	TOTAL SHEETS
KANSAS	87 N-0357-01	2008	24	185

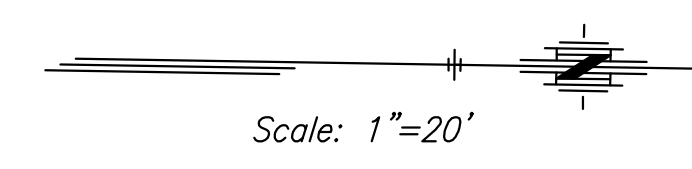
Sta. 49+03.65, 28.00' Lt. Oliver,
Const. 3-Curb Inlet (Typ II)
L=3'-6"-2 1/2", W=3'-4 3/8", H=5'-0"
Inlet Top=155.47
Install 18" x 9.3' Storm Swr. (RCP)(E)
FI Out=152.10 (18" RCP-E)
See Sh. No. 62, 70

Sta. 50+25.09, 28.00' Lt. Oliver,
Const. 3-Curb Inlet (Typ II)
L=3'-6"-2 1/2", W=3'-4 3/8", H=4'-6"
Inlet Top=155.90
Install 18" x 9.3' Storm Swr. (RCP)(E)
FI Out=152.56 (18" RCP-E)
See Sh. No. 62, 70

Sta. 50+25.09, 17.00' Lt. Oliver
Const. Std. Manhole (Precast)
MH Dia.=5'-0", H=8'-0"
Manhole Top=155.78
Install 30" x 42.5' Storm Swr. (RCP)(S)
FI In= 152.51 (18" RCP-W)
FI In=149.51 (24" RCP-N)
FI Out=149.51 (30" RCP-S)
See Sh. No. 66

NOTE:
AT&T will Relocate Conflicting
Duct Banks in Gilbert during
Construction. Contractor shall
remove pavement as necessary
and allow AT&T two weeks to
complete relocation. Contractor
shall Coordinate this work.

Sta. 53+13.23, 28.00' Lt. Oliver,
Const. 3-Curb Inlet (Typ II)
L=3'-6"-2 1/2", W=3'-4 3/8", H=7'-6"
Inlet Top=157.06
Connect Exist. 2-6" PVC to Inlet (NW).
Install 18" x 9.3' Storm Swr. (RCP)(E)
FI In=154.83 (2-6" PVC-NW)
FI Out=151.11 (18" RCP-E)
Remove & Replace 23.0 L.F. of Exist. 2-6"
PVC Pipe (SE)
See Sh. No. 62, 70



Sta. 49+31.09, 64.0' Lt Oliver,
Const. 8" Conc. Drive Entrance
(Reinf.) Saw Cut & Match
Exist. Pvmt. .
See Sh. No. 53

Sta 49+23.05, 36.50 Lt.
End Const. 8"
Protection Curb
See Sh. No. 57

Sta. 49+77.93 Oliver, Const.
8" Reinf. Conc. Valley Gutter.
See Sh. No. 49, 52

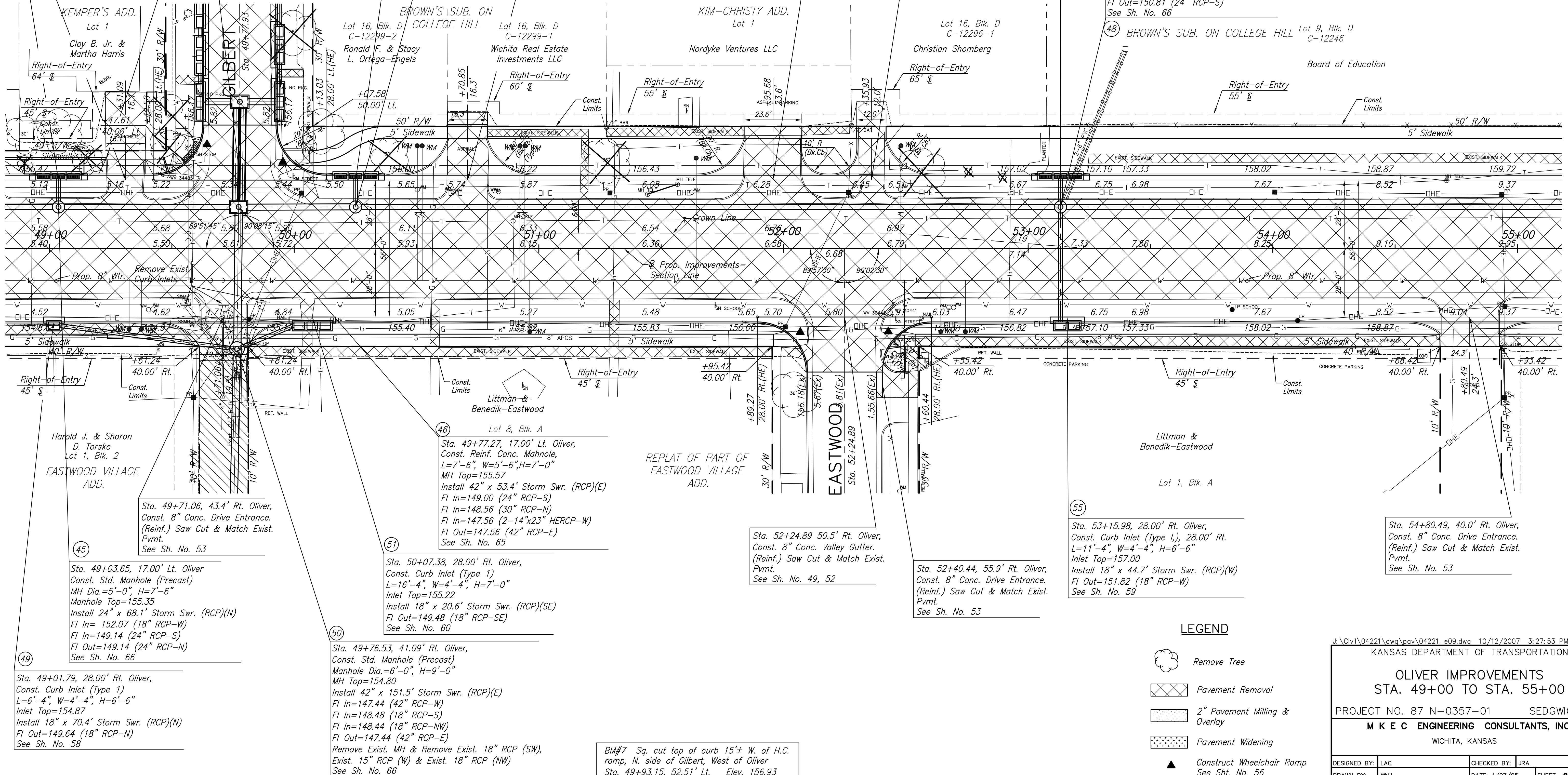
Sta. 49+77.93 Oliver, Const.
8" Reinf. Conc. Valley Gutter.
See Sh. No. 49, 52

Sta. 50+70.85, 55.7' Lt. Oliver,
Const. 8" Conc. Drive Entrance.
(Reinf.) Saw Cut & Match Exist.
Pvmt.
See Sh. No. 53

Sta. 51+95.68, 50.0' Lt. Oliver,
Const. 8" Conc. Drive Entrance.
(Reinf.) Saw Cut & Match Exist.
Pvmt.
See Sh. No. 53

Sta. 52+35.93, 60.0' Lt. Oliver,
Const. 8" Conc. Drive Entrance.
(Reinf.) Saw Cut & Match Exist.
Pvmt.
See Sh. No. 53

Sta. 53+13.23, 17.00' Lt. Oliver,
Const. Std. Manhole (Precast)
MH Dia.=5'-0", H=7'-6"
Manhole Top=156.93
Install 24" x 283.6' Storm Swr. (RCP)(S)
FI In= 150.91 (18" RCP-E)
FI In= 150.91 (18" RCP-W)
FI In=150.81 (24" RCP-N)
FI Out=150.81 (24" RCP-S)
See Sh. No. 66



Sta. 53+13.23, 17.00' Lt. Oliver,
Const. Std. Manhole (Precast)
MH Dia.=5'-0", H=7'-6"
Manhole Top=156.93
Install 24" x 283.6' Storm Swr. (RCP)(S)
FI In= 150.91 (18" RCP-E)
FI In= 150.91 (18" RCP-W)
FI In=150.81 (24" RCP-N)
FI Out=150.81 (24" RCP-S)
See Sh. No. 66

Sta. 54+80.49, 40.0' Rt. Oliver,
Const. 8" Conc. Drive Entrance.
(Reinf.) Saw Cut & Match Exist.
Pvmt.
See Sh. No. 53

Sta. 53+15.98, 28.00' Rt. Oliver,
Const. Curb Inlet (Type I), 28.00' Rt.
L=11'-4", W=4'-4", H=6'-6"
Inlet Top=157.00
Install 18" x 44.7' Storm Swr. (RCP)(W)
FI Out=151.82 (18" RCP-W)
See Sh. No. 59

Sta. 54+80.49, 40.0' Rt. Oliver,
Const. 8" Conc. Drive Entrance.
(Reinf.) Saw Cut & Match Exist.
Pvmt.
See Sh. No. 53

LEGEND

- Remove Tree
- Pavement Removal
- 2" Pavement Milling & Overlay
- Pavement Widening
- Construct Wheelchair Ramp
See Sht. No. 56

BM#7 Sq. cut top of curb 15± W. of H.C.
ramp, N. side of Gilbert, West of Oliver
Sta. 49+93.15, 52.51' Lt. Elev. 156.93

J:\Civil\04221\dwg\pav\04221_e09.dwg 10/12/2007 3:27:53 PM CDT
KANSAS DEPARTMENT OF TRANSPORTATION
OLIVER IMPROVEMENTS
STA. 49+00 TO STA. 55+00
PROJECT NO. 87 N-0357-01 SEDGWICK CO.
M K E C ENGINEERING CONSULTANTS, INC.
WICHITA, KANSAS

DESIGNED BY: LAC	CHECKED BY: JRA
DRAWN BY: WNJ	DATE: 4/07/05
SHEET 24 OF 185	