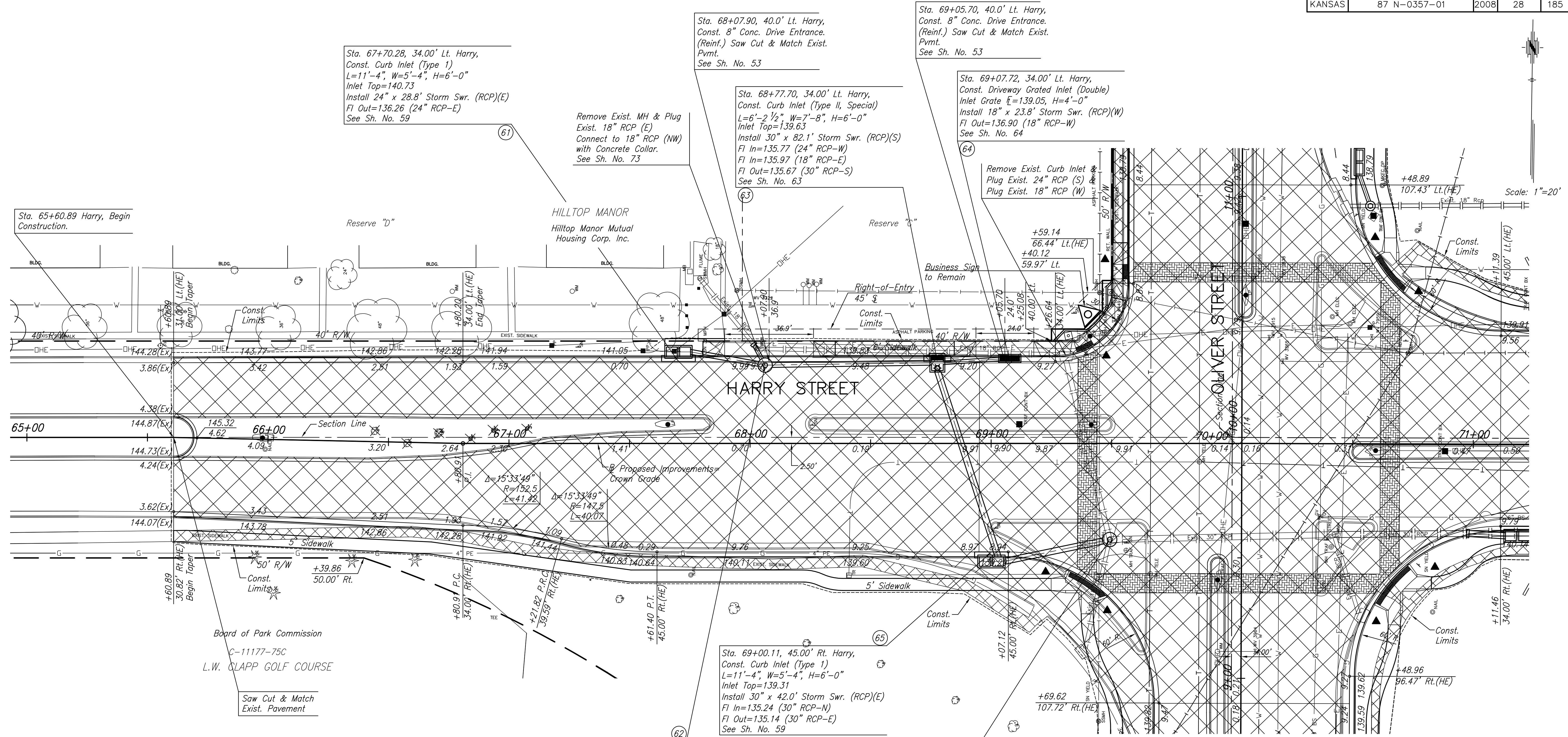


P.O.T. Sta. 65+00.00  
1. N=1678223.912, E=1665031.360

P.I. Sta. 70+00.00  
1. N=1678232.870, E=1665531.280

STATE	PROJECT NO.	YEAR	SHEET NO.	TOTAL SHEETS
KANSAS	87 N-0357-01	2008	28	185



Sta. 67+70.28, 34.00' Lt. Harry,  
Const. Curb Inlet (Type 1)  
L=11'-4", W=5'-4", H=6'-0"  
Inlet Top=140.73  
Install 24" x 28.8' Storm Swr. (RCP)(E)  
FI Out=136.26 (24" RCP-E)  
See Sh. No. 59

Remove Exist. MH & Plug  
Exist. 18" RCP (E)  
Connect to 18" RCP (NW)  
with Concrete Collar.  
See Sh. No. 73

Sta. 68+07.90, 40.0' Lt. Harry,  
Const. 8" Conc. Drive Entrance.  
(Reinf.) Saw Cut & Match Exist.  
Pvmt.  
See Sh. No. 53

Sta. 68+77.70, 34.00' Lt. Harry,  
Const. Curb Inlet (Type II, Special)  
L=6'-2 1/2", W=7'-8", H=6'-0"  
Inlet Top=139.63  
Install 30" x 82.1' Storm Swr. (RCP)(S)  
FI In=135.77 (24" RCP-W)  
FI In=135.97 (18" RCP-E)  
FI Out=135.67 (30" RCP-S)  
See Sh. No. 63

Sta. 69+05.70, 40.0' Lt. Harry,  
Const. 8" Conc. Drive Entrance.  
(Reinf.) Saw Cut & Match Exist.  
Pvmt.  
See Sh. No. 53

Sta. 69+07.72, 34.00' Lt. Harry,  
Const. Driveway Grated Inlet (Double)  
Inlet Grate  $\bar{f}$ =139.05, H=4'-0"  
Install 18" x 23.8' Storm Swr. (RCP)(W)  
FI Out=136.90 (18" RCP-W)  
See Sh. No. 64

Remove Exist. Curb Inlet  
Plug Exist. 24" RCP (S)  
Plug Exist. 18" RCP (W)

Sta. 69+00.11, 45.00' Rt. Harry,  
Const. Curb Inlet (Type 1)  
L=11'-4", W=5'-4", H=6'-0"  
Inlet Top=139.31  
Install 30" x 42.0' Storm Swr. (RCP)(E)  
FI In=135.24 (30" RCP-N)  
FI Out=135.14 (30" RCP-E)  
See Sh. No. 59

Sta. 68+06.25, 32.50' Lt. Harry,  
Const. Std. Manhole (Precast)  
MH Dia.=6'-0", H=5'-6"  
Manhole Top=139.95  
Install 18" x 7.0' Storm Swr. (RCP)(NW)  
Connect to Exist. 18" RCP with Concrete  
Collar  
Install 24" x 66.3' Storm Swr. (RCP)(E)  
FI In= 136.85 (18" RCP-NW)  
FI In=136.09 (24" RCP-W)  
FI Out=136.09 (24" RCP-E)  
See Sh. No. 66

Sta. 69+49.14, 39.89' Rt. Harry,  
Const. Std. Manhole (Precast)  
MH Dia.=6'-0", H=5'-6"  
Manhole Top=139.43  
Connect to Exist. 30" RCP (E)  
FI In=134.93 (30" RCP-W)  
FI Out=134.83 (Exist. 30" RCP-E)  
Remove Exist. MH  
Plug Exist. 24" RCP (N) & Exist. 18" RCP (S)  
See Sh. No. 66

Sta. 65+60.89 Harry, Begin  
Construction.

Board of Park Commission  
C-11177-75C  
L.W. CLAPP GOLF COURSE

Saw Cut & Match  
Exist. Pavement

- SW Cor. Sec. 25, T27S, R1E  
Sta. 70+00.00, 0.00' Rt.
- 5/8" Rebar w/MKEC cap in Thimble 76.25' NW
  - "X" cut in top of retaining wall 72.04' SW
  - 5/8" bar NW cor. Conc. Pad Signal Box 107.1' NE
  - City Disc BM NW cor. Bridge Headwall 143.36' ENE
  - N=1678232.870, E=1665531.280

**LEGEND**

- Remove Tree
- Pavement Removal
- 2" Pavement Milling & Overlay
- Pavement Widening
- Construct Wheelchair Ramp  
See Sht. No. 56

J:\Civil\04221\dwg\pav\04221\_e11.dwg 11/20/2006 2:52:14 PM CST

KANSAS DEPARTMENT OF TRANSPORTATION

**OLIVER IMPROVEMENTS**  
STA. 65+00 TO STA. 71+00

PROJECT NO. 87 N-0357-01 SEDGWICK CO

**M K E C ENGINEERING CONSULTANTS, INC.**  
WICHITA, KANSAS

DESIGNED BY: LAC	CHECKED BY: LJA
DRAWN BY: WJN	DATE: 4/07/05

SHEET 28 OF 185