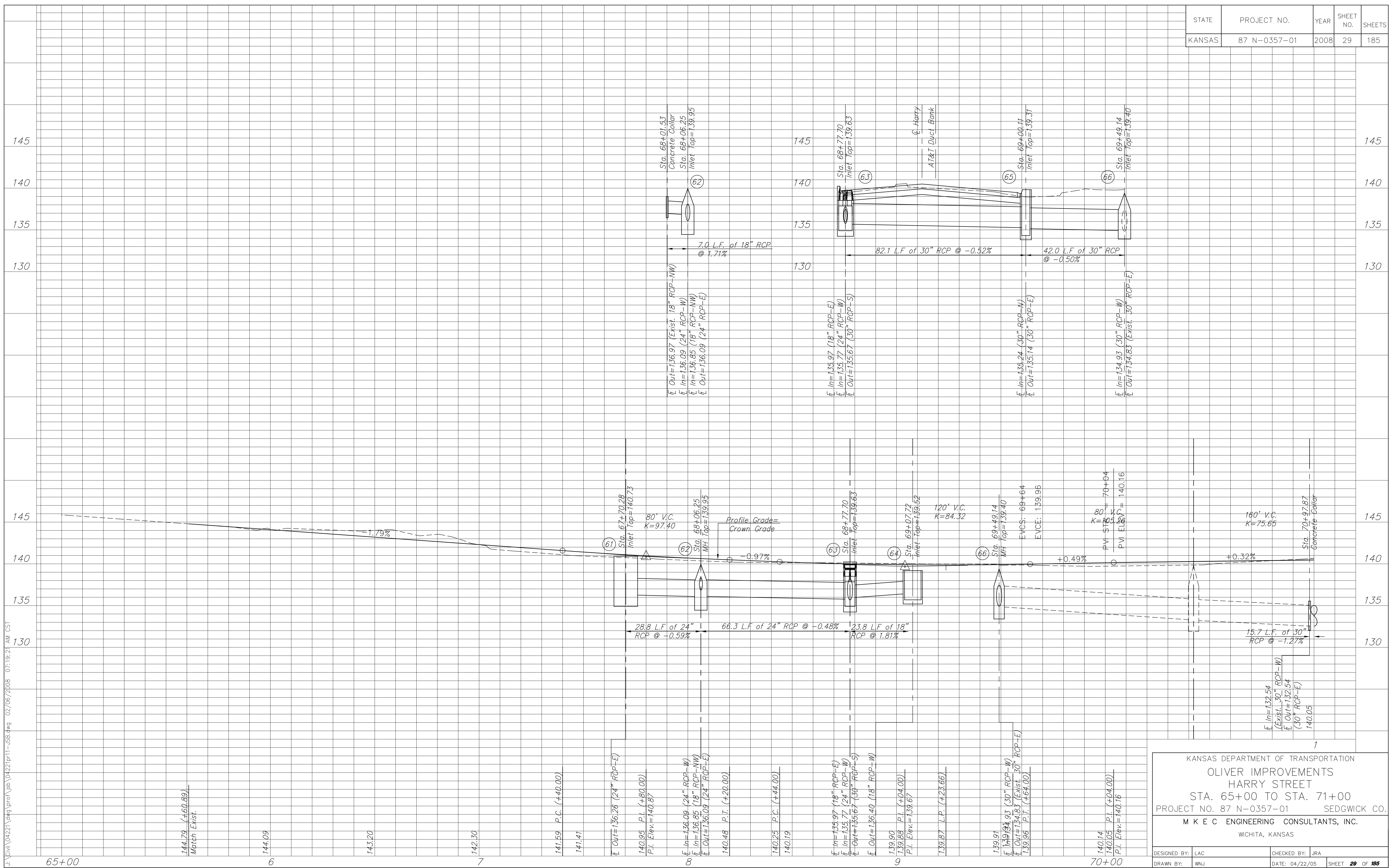


STATE	PROJECT NO.	YEAR	SHEET NO.	SHEETS
KANSAS	87 N-0357-01	2008	29	185



U:\Civil\042221.dwg brca\jeb\042221\11-USB.dwg 02/06/2008 07:19:21 AM CST
 65+00
 144.79 (+60.89)
 Match Exist.
 144.09
 143.20
 142.30
 141.59 P.C. (+40.00)
 141.41
 140.95 P.I. (+80.00)
 P.I. Elev = 140.87
 8
 E In = 136.09 (24" RCP-W)
 E In = 136.85 (18" RCP-NW)
 E Out = 136.09 (24" RCP-E)
 140.48 P.I. (+20.00)
 140.25 P.C. (+44.00)
 140.19
 9
 E In = 135.97 (18" RCP-E)
 E In = 135.77 (24" RCP-W)
 E Out = 135.67 (30" RCP-S)
 E Out = 136.40 (18" RCP-W)
 139.90
 139.88 P.I. (+04.00)
 P.I. Elev = 139.67
 139.87 L.P. (+23.66)
 139.91
 E In = 134.93 (30" RCP-W)
 E Out = 134.83 (Exist. 30" RCP-E)
 139.96 P.I. (+64.00)
 10
 140.14
 140.05 P.I. (+04.00)
 P.I. Elev = 140.16
 70+00

KANSAS DEPARTMENT OF TRANSPORTATION
 OLIVER IMPROVEMENTS
 HARRY STREET
 STA. 65+00 TO STA. 71+00
 PROJECT NO. 87 N-0357-01 SEDGWICK CO.
 M K E C ENGINEERING CONSULTANTS, INC.
 WICHITA, KANSAS

DESIGNED BY: LAC	CHECKED BY: JRA
DRAWN BY: WNJ	DATE: 04/22/05
SHEET 29 OF 185	