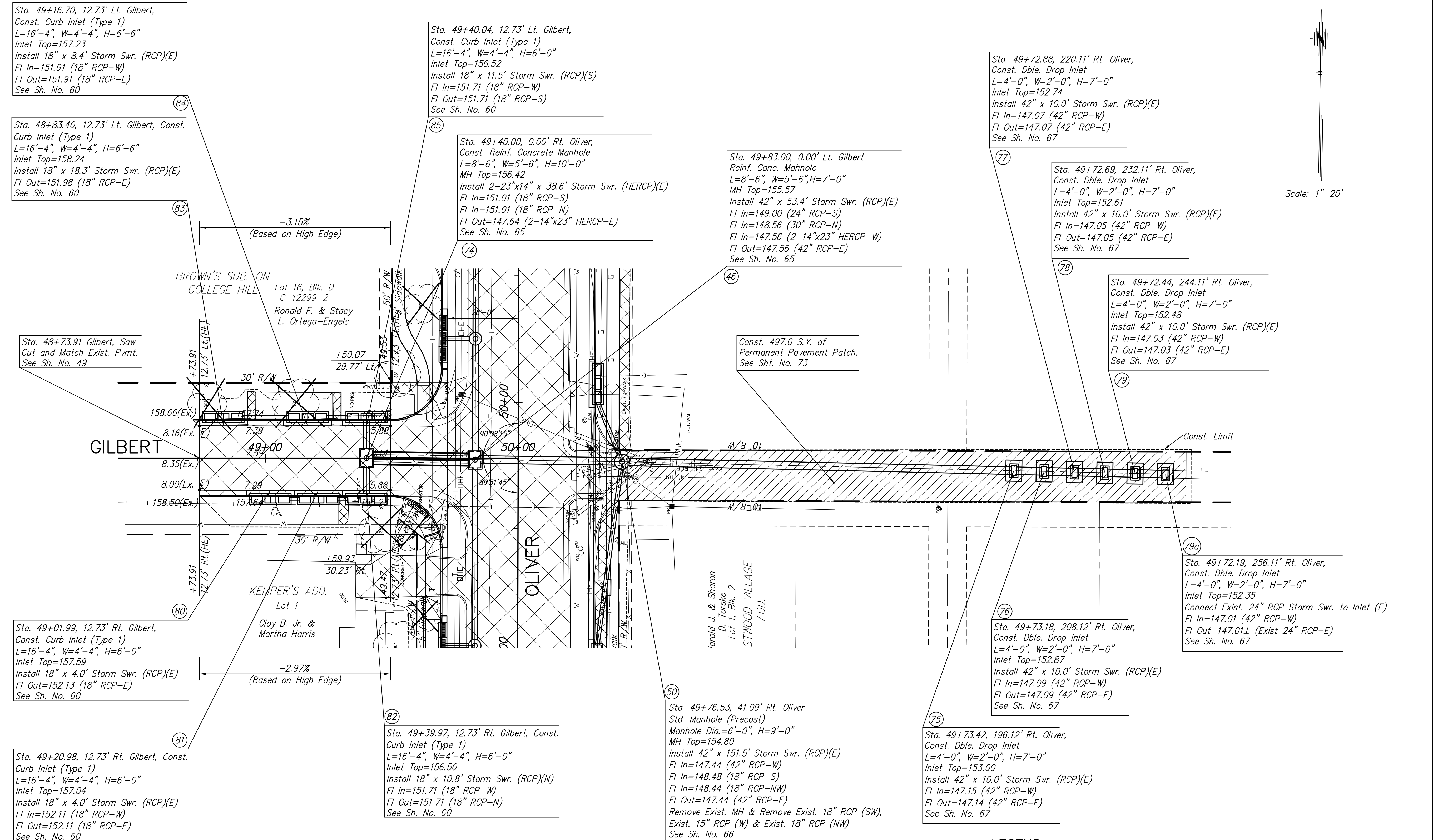


STATE	PROJECT NO.	YEAR	SHEET NO.	TOTAL SHEETS
KANSAS	87 N-0357-01	2008	32	185



Sta. 49+16.70, 12.73' Lt. Gilbert,
Const. Curb Inlet (Type 1)
L=16'-4", W=4'-4", H=6'-6"
Inlet Top=157.23
Install 18" x 8.4' Storm Swr. (RCP)(E)
FI In=151.91 (18" RCP-W)
FI Out=151.91 (18" RCP-E)
See Sh. No. 60

Sta. 48+83.40, 12.73' Lt. Gilbert, Const.
Curb Inlet (Type 1)
L=16'-4", W=4'-4", H=6'-6"
Inlet Top=158.24
Install 18" x 18.3' Storm Swr. (RCP)(E)
FI Out=151.98 (18" RCP-E)
See Sh. No. 60

Sta. 48+73.91 Gilbert, Saw
Cut and Match Exist. Pvmt.
See Sh. No. 49

Sta. 49+01.99, 12.73' Rt. Gilbert,
Const. Curb Inlet (Type 1)
L=16'-4", W=4'-4", H=6'-0"
Inlet Top=157.59
Install 18" x 4.0' Storm Swr. (RCP)(E)
FI Out=152.13 (18" RCP-E)
See Sh. No. 60

Sta. 49+20.98, 12.73' Rt. Gilbert, Const.
Curb Inlet (Type 1)
L=16'-4", W=4'-4", H=6'-0"
Inlet Top=157.04
Install 18" x 4.0' Storm Swr. (RCP)(E)
FI In=152.11 (18" RCP-W)
FI Out=152.11 (18" RCP-E)
See Sh. No. 60

Sta. 49+40.04, 12.73' Lt. Gilbert,
Const. Curb Inlet (Type 1)
L=16'-4", W=4'-4", H=6'-0"
Inlet Top=156.52
Install 18" x 11.5' Storm Swr. (RCP)(S)
FI In=151.71 (18" RCP-W)
FI Out=151.71 (18" RCP-S)
See Sh. No. 60

Sta. 49+40.00, 0.00' Rt. Oliver,
Const. Reinf. Concrete Manhole
L=8'-6", W=5'-6", H=10'-0"
MH Top=156.42
Install 2-23"x14" x 38.6' Storm Swr. (HERCP)(E)
FI In=151.01 (18" RCP-S)
FI In=151.01 (18" RCP-N)
FI Out=147.64 (2-14"x23" HERCP-E)
See Sh. No. 65

Sta. 49+83.00, 0.00' Lt. Gilbert
Reinf. Conc. Manhole
L=8'-6", W=5'-6", H=7'-0"
MH Top=155.57
Install 42" x 53.4' Storm Swr. (RCP)(E)
FI In=149.00 (24" RCP-S)
FI In=148.56 (30" RCP-N)
FI In=147.56 (2-14"x23" HERCP-W)
FI Out=147.56 (42" RCP-E)
See Sh. No. 65

Sta. 49+72.88, 220.11' Rt. Oliver,
Const. Dble. Drop Inlet
L=4'-0", W=2'-0", H=7'-0"
Inlet Top=152.74
Install 42" x 10.0' Storm Swr. (RCP)(E)
FI In=147.07 (42" RCP-W)
FI Out=147.07 (42" RCP-E)
See Sh. No. 67

Sta. 49+72.69, 232.11' Rt. Oliver,
Const. Dble. Drop Inlet
L=4'-0", W=2'-0", H=7'-0"
Inlet Top=152.61
Install 42" x 10.0' Storm Swr. (RCP)(E)
FI In=147.05 (42" RCP-W)
FI Out=147.05 (42" RCP-E)
See Sh. No. 67

Sta. 49+72.44, 244.11' Rt. Oliver,
Const. Dble. Drop Inlet
L=4'-0", W=2'-0", H=7'-0"
Inlet Top=152.48
Install 42" x 10.0' Storm Swr. (RCP)(E)
FI In=147.03 (42" RCP-W)
FI Out=147.03 (42" RCP-E)
See Sh. No. 67

Sta. 49+72.19, 256.11' Rt. Oliver,
Const. Dble. Drop Inlet
L=4'-0", W=2'-0", H=7'-0"
Inlet Top=152.35
Connect Exist. 24" RCP Storm Swr. to Inlet (E)
FI In=147.01 (42" RCP-W)
FI Out=147.01± (Exist 24" RCP-E)
See Sh. No. 67

Sta. 49+73.18, 208.12' Rt. Oliver,
Const. Dble. Drop Inlet
L=4'-0", W=2'-0", H=7'-0"
Inlet Top=152.87
Install 42" x 10.0' Storm Swr. (RCP)(E)
FI In=147.09 (42" RCP-W)
FI Out=147.09 (42" RCP-E)
See Sh. No. 67

Sta. 49+73.42, 196.12' Rt. Oliver,
Const. Dble. Drop Inlet
L=4'-0", W=2'-0", H=7'-0"
Inlet Top=153.00
Install 42" x 10.0' Storm Swr. (RCP)(E)
FI In=147.15 (42" RCP-W)
FI Out=147.14 (42" RCP-E)
See Sh. No. 67

Sta. 49+76.53, 41.09' Rt. Oliver
Std. Manhole (Precast)
Manhole Dia.=6'-0", H=9'-0"
MH Top=154.80
Install 42" x 151.5' Storm Swr. (RCP)(E)
FI In=147.44 (42" RCP-W)
FI In=148.48 (18" RCP-S)
FI In=148.44 (18" RCP-NW)
FI Out=147.44 (42" RCP-E)
Remove Exist. MH & Remove Exist. 18" RCP (SW),
Exist. 15" RCP (W) & Exist. 18" RCP (NW)
See Sh. No. 66

Sta. 49+39.97, 12.73' Rt. Gilbert, Const.
Curb Inlet (Type 1)
L=16'-4", W=4'-4", H=6'-0"
Inlet Top=156.50
Install 18" x 10.8' Storm Swr. (RCP)(N)
FI In=151.71 (18" RCP-W)
FI Out=151.71 (18" RCP-N)
See Sh. No. 60

- LEGEND**
- Remove Tree
 - Pavement Removal
 - 2" Pavement Milling & Overlay
 - Pavement Widening
 - Permanent Pavement Patch

J:\Civil\04221\dwg\pav\04221_e13.dwg 11/20/2006 3:30:46 PM CST

KANSAS DEPARTMENT OF TRANSPORTATION

**OLIVER IMPROVEMENTS
GILBERT STREET**

PROJECT NO. 87 N-0357-01 SEDGWICK CO.

M K E C ENGINEERING CONSULTANTS, INC.
WICHITA, KANSAS

DESIGNED BY: LAC CHECKED BY: JRA
DRAWN BY: WNJ DATE: 4/07/05 SHEET 32 OF 185