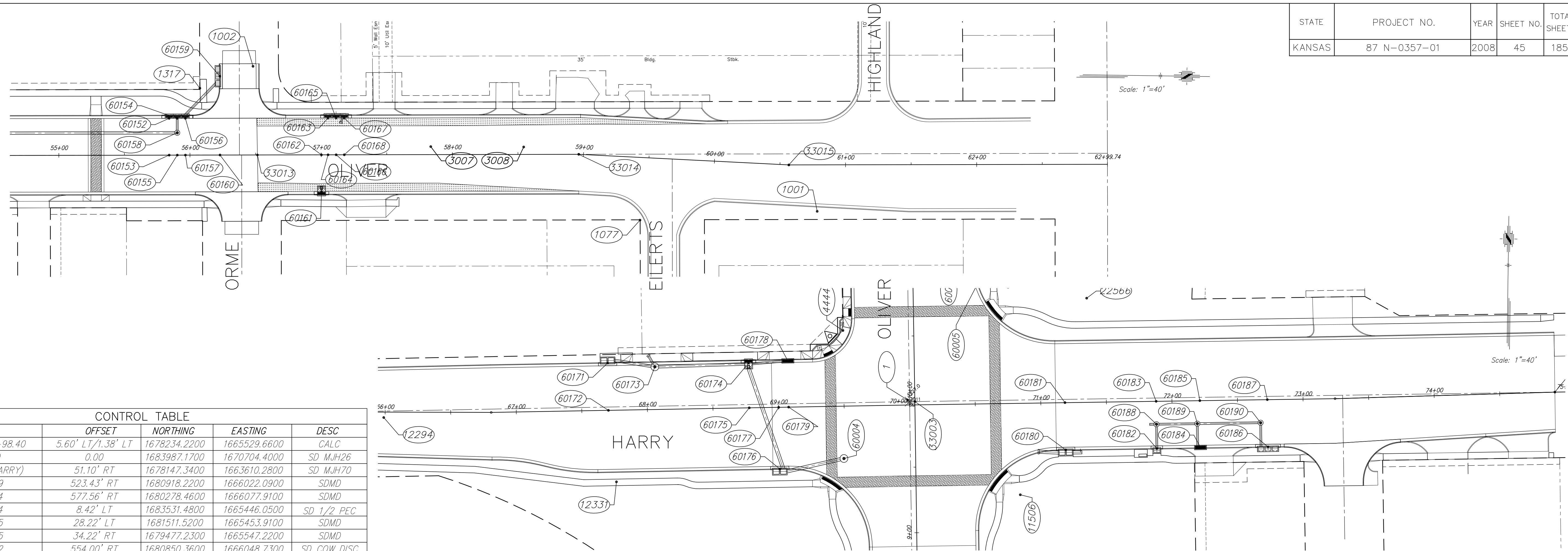


STATE	PROJECT NO.	YEAR	SHEET NO.	TOTAL SHEETS
KANSAS	87 N-0357-01	2008	45	185



CONTROL TABLE					
POINT NUMBER	STATION	OFFSET	NORTHING	EASTING	DESC
1	10+01.36/69+98.40	5.60' LT/1.38' LT	1678234.2200	1665529.6600	CALC
26	2+80.30	0.00	1683987.1700	1670704.4000	SD MJH26
70	50+70.78 (HARRY)	51.10' RT	1678147.3400	1663610.2800	SD MJH70
102	36+77.09	523.43' RT	1680918.2200	1666022.0900	SDMD
103	30+36.64	577.56' RT	1680278.4600	1666077.9100	SDMD
104	62+99.74	8.42' LT	1683531.4800	1665446.0500	SD 1/2 PEC
202	42+80.45	28.22' LT	1681511.5200	1665453.9100	SDMD
205	22+43.95	34.22' RT	1679477.2300	1665547.2200	SDMD
1000	36+09.02	554.00' RT	1680850.3600	1666048.7300	SD COW DISC
1001	60+78.33	35.38' RT	1683310.8080	1665493.4540	NAIL
1002	56+52.85	67.84' LT	1682883.7930	1665388.7420	BM 8
1077	59+45.57	47.72' RT	1683175.8180	1665502.0850	PKN
1317	56+07.62	50.91' LT	1682838.8430	1665406.4030	SD 5/8"GOEDEKE
1649	52+56.29	28.51' RT	1682488.8560	1665491.5320	NAIL
1787	51+27.55	49.71' LT	1682358.8540	1665415.4090	SD 1/2" BAR
1897	49+45.67	39.29' RT	1682178.4450	1665507.3630	NAIL
2045	49+93.15	52.51' LT	1682224.4250	1665414.8010	BM 7
2320	47+32.01	39.84' LT	1681963.5310	1665431.7170	SD 1" PIPE
2656	43+32.23	56.59' LT	1681561.9830	1665423.2620	BM 6
2758	40+37.66	25.46' RT	1681270.2680	1665516.0950	NAIL
2942	38+12.32	45.00' RT	1681045.0050	1665536.5160	SD 3/4" PIPE
2987	37+04.35	43.57' RT	1680937.5790	1665536.8340	BM 1 CITY
3321	33+70.95	30.64' RT	1680604.0310	1665525.7220	NAIL
3976	19+41.85	28.60' RT	1679175.0750	1665546.4010	NAIL
4404	14+60.42	42.68' LT	1678692.1390	1665483.8600	SD 1/2" SAVOY
4418	13+55.48	43.69' LT	1678587.2030	1665485.6510	SD 1/2" SAVOY
4439	12+54.97	53.98' LT	1678487.0260	1665477.2540	SD 1/2" SAVOY
4444	10+55.02	53.96' LT	1678287.1010	1665480.4540	NAIL
10206	16+10.40	32.26' LT	1678842.7000	1665490.8300	SDMD
10207	11+04.66	58.03' RT	1678338.5200	1665591.6400	SDMD
11123	75+67.41	35.39' RT	1678205.8600	1666099.1490	NAIL
11155	10+85.96	72.56' RT	1678320.0480	1665606.4630	NAIL
11506	9+27.84	79.37' RT	1678161.9290	1665615.6710	NAIL
11692	6+65.32	97.18' RT	1677898.4710	1665637.0180	NAIL
11763	4+12.59	33.79' RT	1677645.6300	1665574.0830	NAIL
11904	5+34.47	68.40' LT	1677767.3300	1665471.6720	NAIL
12168	64+58.27	1.67' RT	1678221.4890	1664989.6710	NAIL
12294	65+98.87	4.91' RT	1678220.7700	1665130.2980	NAIL
12331	67+75.40	57.06' RT	1678171.7900	1665307.7390	NAIL
22518	46+13.02	30.11' RT	1681845.6890	1665503.5900	NAIL
22545	44+55.75	24.72' RT	1681688.3600	1665500.7600	NAIL
22566	71+36.14	76.85' LT	1678311.7260	1665666.2690	NAIL
22568	49+92.98	26.25' RT	1682225.5440	1665493.5580	NAIL
80001	30+13.95	64.88' RT	1680247.6227	1665565.6319	BM 2
80002	20+57.23	65.45' RT	1679291.0352	1665581.4131	BM 3
80003	16+44.38	63.44' LT	1678876.1850	1665459.1000	BM 4

STORM SEWER TABLE					
POINT NUMBER	STATION	OFFSET	NORTHING	EASTING	DESC
60150	53+15.98	30.00' RT	1682548.5569	1665492.0477	sws
60151	53+15.98	0.00' RT	1682548.0688	1665462.0516	BL Proj
60152	55+84.11	28.00' LT	1682815.7070	1665429.6949	sws
60153	55+84.11	0.00' LT	1682816.1625	1665457.6893	BL Proj
60154	55+90.31	28.00' LT	1682821.9061	1665429.5940	sws
60155	55+90.31	0.00' LT	1682822.3617	1665457.5885	BL Proj
60156	55+96.51	28.00' LT	1682828.1053	1665429.4931	sws
60157	55+96.51	0.00' LT	1682828.5608	1665457.4876	BL Proj
60158	55+90.31	17.00' LT	1682822.0851	1665440.5922	sws-mh
60159	56+22.87	59.99' LT	1682853.9383	1665397.0799	sws
60160	56+22.87	0.00' LT	1682854.9142	1665457.0588	BL Proj
60161	57+00.20	28.00' RT	1682932.6959	1665483.7969	sws
60162	57+00.20	0.00' RT	1682932.2404	1665455.8006	BL Proj
60163	57+05.24	28.00' LT	1682936.8199	1665427.7223	sws
60164	57+05.24	0.00' LT	1682937.2754	1665455.7186	BL Proj
60165	57+11.44	28.00' LT	1682943.0191	1665427.6215	sws
60166	57+11.44	0.00' LT	1682943.4746	1665455.6178	BL Proj
60167	57+17.64	28.00' LT	1682949.2182	1665427.5206	sws
60168	57+17.64	0.00' LT	1682949.6738	1665455.5169	BL Proj
60169	27+70.11	548.51' RT	1680011.4958	1666053.0839	sws-endsec
60170	27+70.11	554.76' RT	1680011.5951	1666059.3290	sws-endsec
60171	67+70.28	36.00' LT	1678262.2487	1665300.9846	sws
60172	67+70.28	0.00' LT	1678226.2510	1665301.6283	BL Proj
60173	68+06.25	32.50' LT	1678259.3936	1665337.0081	sws-mh
60174	68+77.70	34.01' LT	1678262.1736	1665408.4247	sws
60175	68+77.70	0.00' LT	1678228.1715	1665409.0326	BL Proj
60176	69+00.12	46.99' RT	1678181.5882	1665432.2880	sws
60177	69+00.12	0.00' RT	1678228.5723	1665431.4478	BL Proj
60178	69+07.72	35.25' LT	1678263.9563	1665438.4206	sws
60179	69+07.72	0.00' LT	1678228.7083	1665439.0509	BL Proj
60180	71+18.46	36.00' RT	1678196.1249	1665650.2850	sws
60181	71+18.46	0.00' RT	1678232.1191	1665649.7536	BL Proj
60182	71+87.97	36.01' RT	1678197.1434	1665719.7948	sws
60183	71+87.97	0.00' RT	1678233.1453	1665719.2632	BL Proj
60184	72+21.26	35.71' RT	1678197.9307	1665753.0789	sws
60185	72+21.26	0.00' RT	1678233.6368	1665752.5517	BL Proj

STORM SEWER TABLE					
POINT NUMBER	STATION	OFFSET	NORTHING	EASTING	DESC
60186	72+72.74	36.00' RT	1678198.4006	1665804.5504	sws
60187	72+72.74	0.00' RT	1678234.3967	1665804.0190	BL Proj
60188	71+87.97	17.50' RT	1678215.6472	1665719.5216	sws-mh
60189	72+19.12	17.50' RT	1678216.1070	1665750.6628	sws-mh
60190	72+67.38	17.50' RT	1678216.8195	1665798.9196	sws-mh
60191	21+96.93	72.24' LT	1679428.5225	1665441.5191	sws

J:\Civil\04221\dwg\Sws\04221-BUBBLE-SWS5.dwg 06/26/2007 03:07:18 PM CST

KANSAS DEPARTMENT OF TRANSPORTATION

OLIVER IMPROVEMENTS

STORM SEWER BUBBLE MAP

STA. 54+50 TO STA. 60+00 & HARRY

PROJECT NO. 87 N-0357-01 SEDGWICK CO

M K E C ENGINEERING CONSULTANTS, INC.

WICHITA, KANSAS

DESIGNED BY: LAC	CHECKED BY: JRA
DRAWN BY: WNJ	DATE: 4/07/05 SHEET 45 OF 185