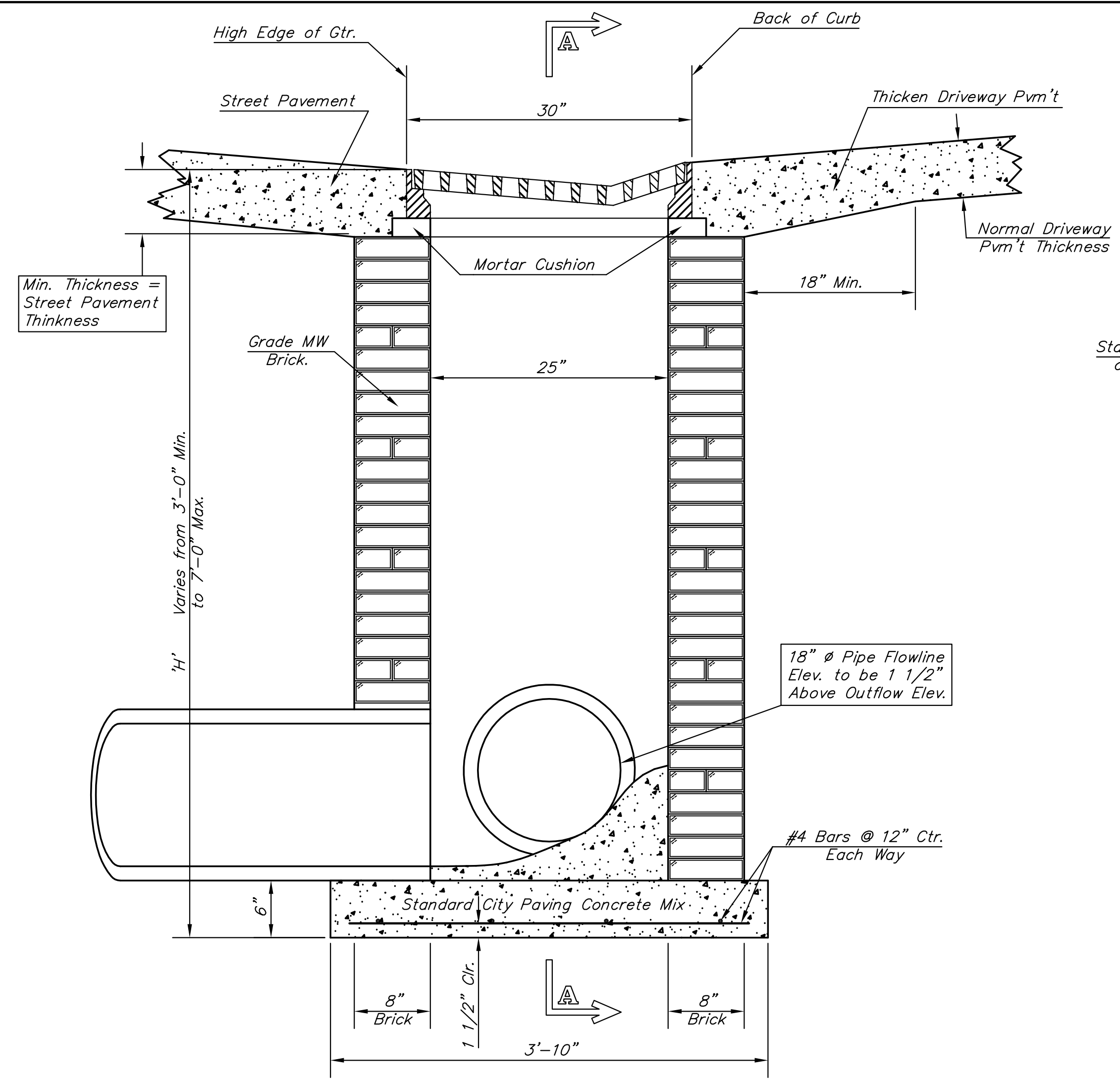
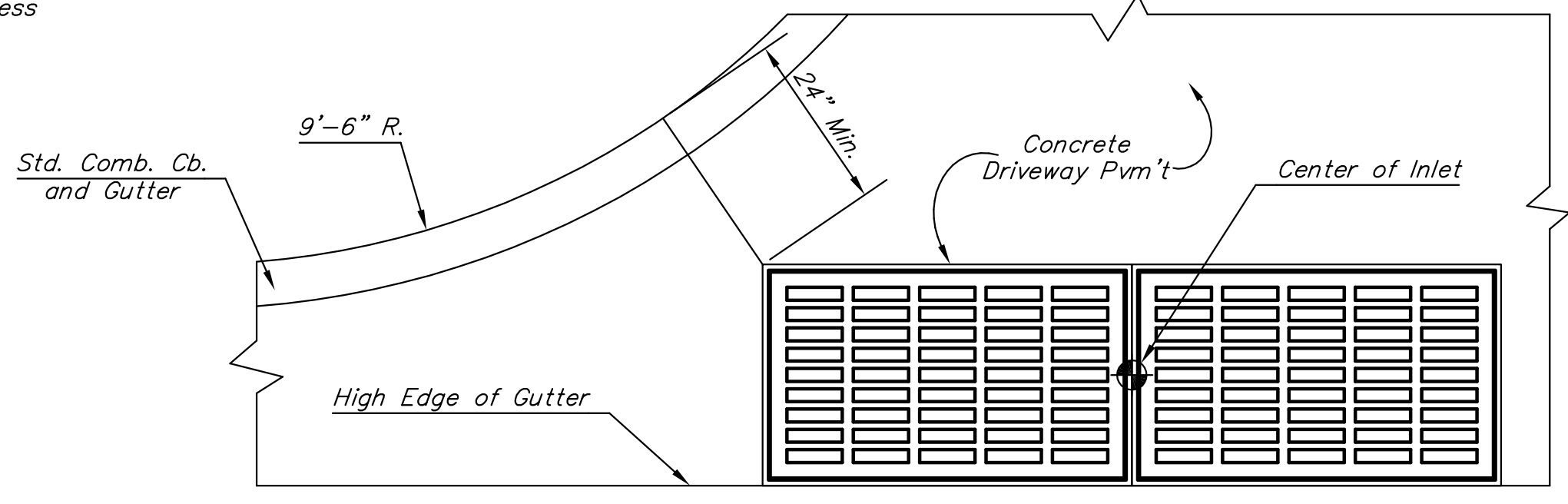


STATE	PROJECT NO.	YEAR	SHEET NO.	SHEETS
KANSAS	87 N-0357-01	2008	64	185



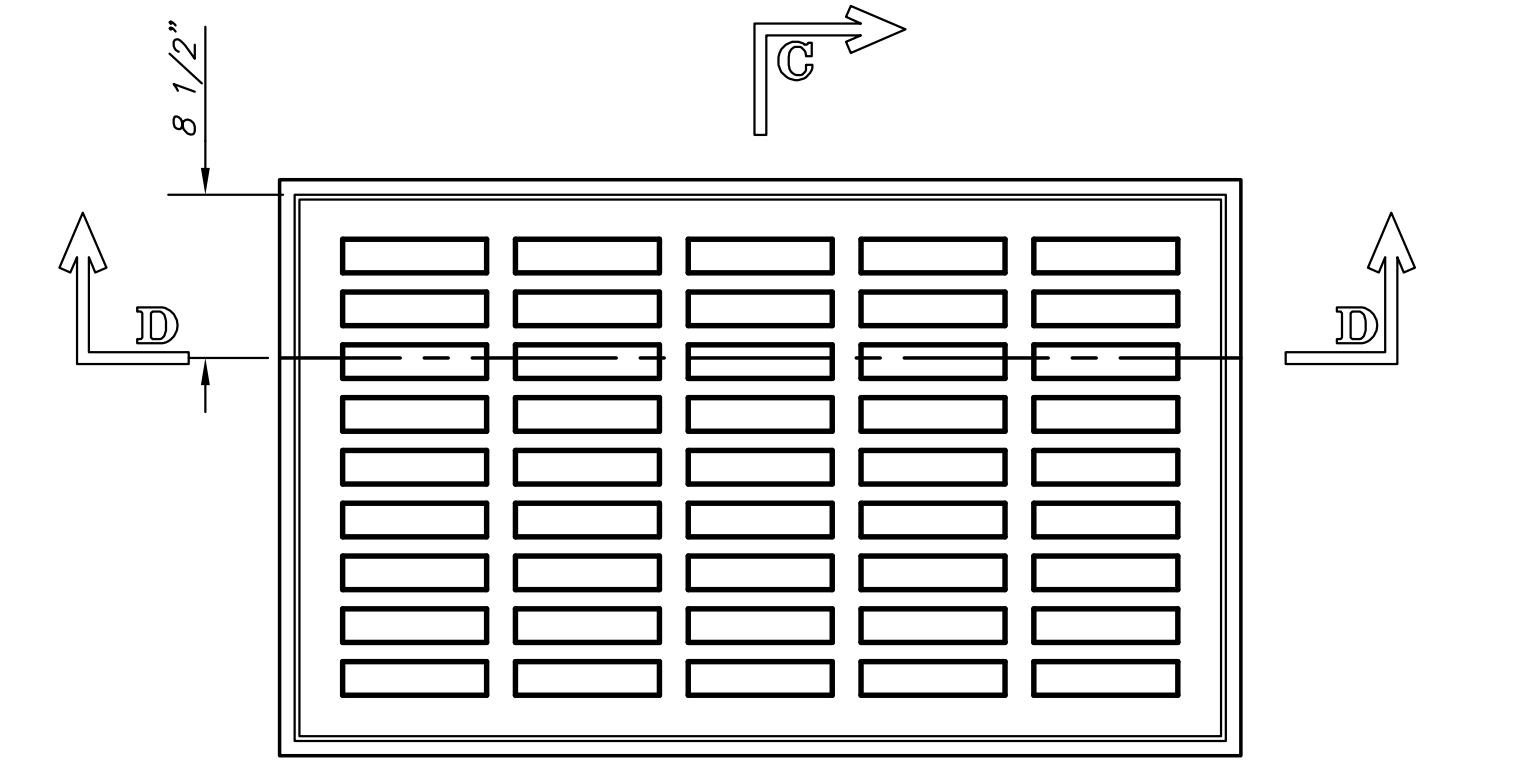
SECTION B-B



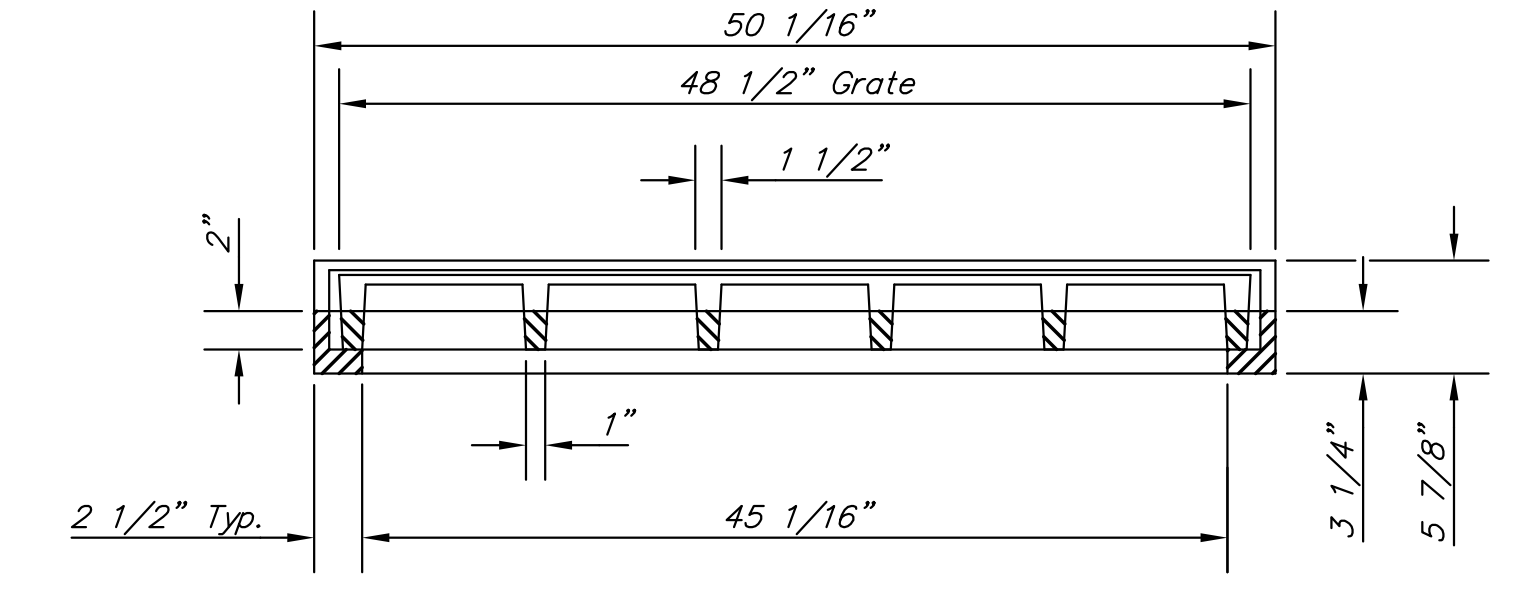
PLAN

GENERAL NOTES

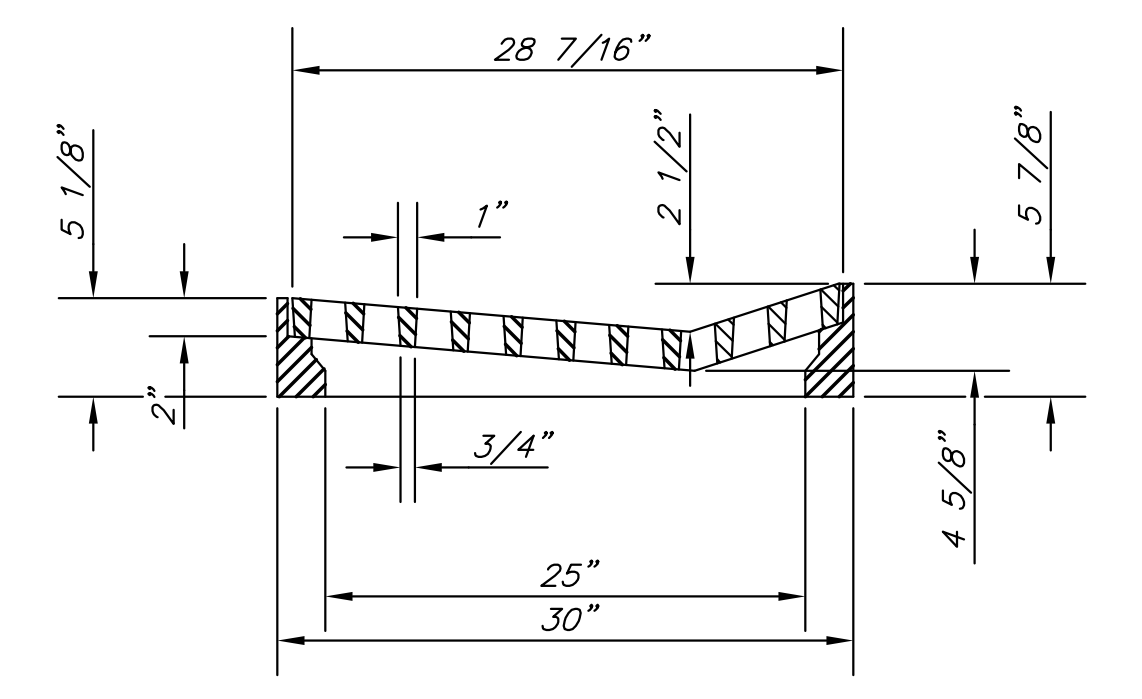
1. Grate frames to be installed on thin mortar cushion to insure full support along brick walls. Concrete used for inlet construction shall be concrete pavement mix.
2. Inlet invert shall be shaped with 8 sack sand mix concrete to create flow channels and to increase hydraulic efficiency such that the inlet will be self cleaning between all inlet and/or outlet pipes.
3. The ends of all pipes installed in inlets shall be cut off flush with the inside face of the inlet wall.
4. Inlet Frames and Grates to be two (2) Deeter #2095 or approved equal.



PLAN

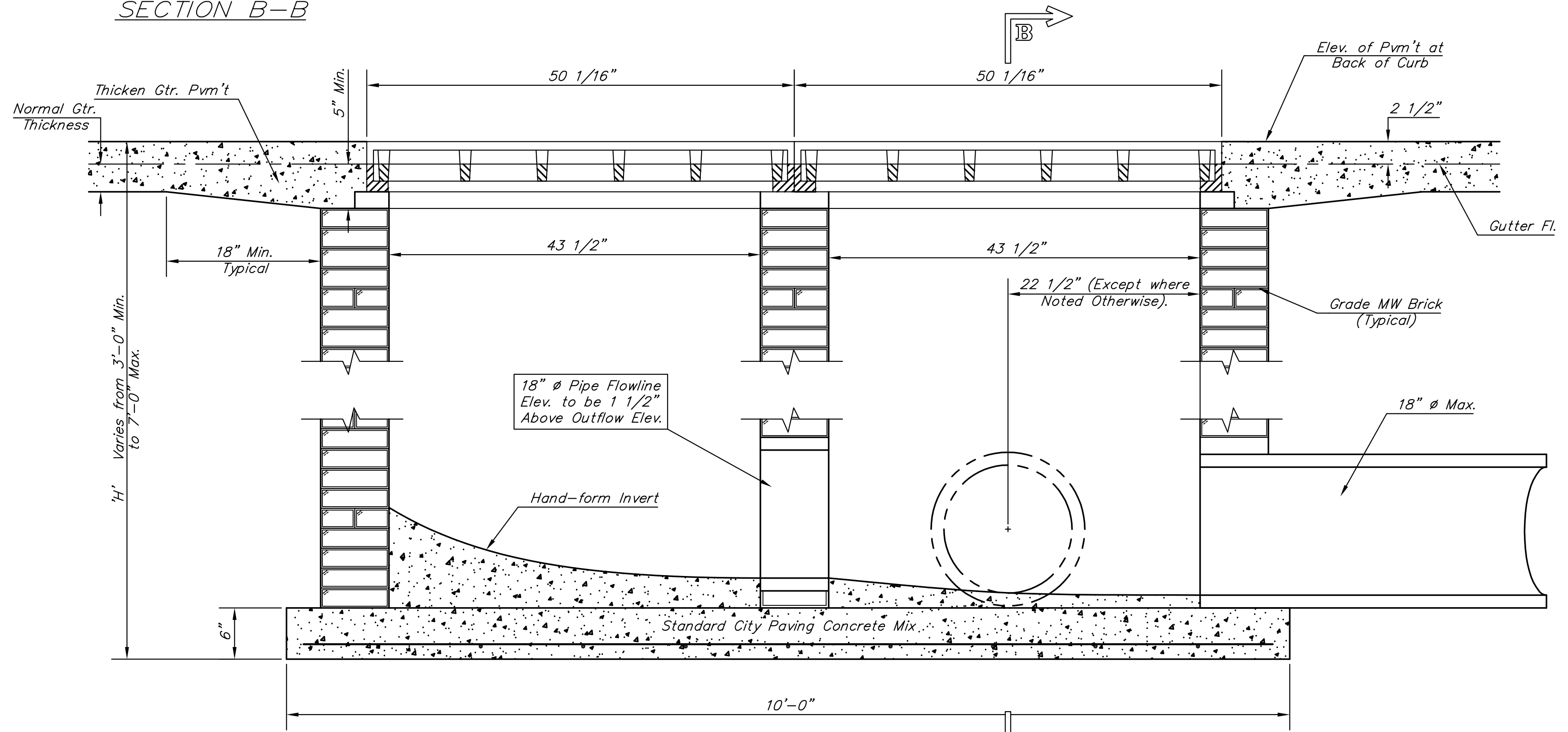


SECTION D-D



SECTION C-C

DEETER #2095 FRAME & GRATE  
TOTAL WEIGHT: 705 lbs.  
(2 Each Required)



SECTION A-A

J:\Civil\04221\dwg\details\04221Grate.dwg 06/12/2007 03:43:13 AM CST

KANSAS DEPARTMENT OF TRANSPORTATION  
**DRIVEWAY GRATED INLET  
DOUBLE**  
PROJECT NO. 87 N-0357-01 SEDGWICK CO.  
**M K E C ENGINEERING CONSULTANTS, INC.**  
WICHITA, KANSAS

DESIGNED BY: JRA	CHECKED BY: JRA
DRAWN BY: WNJ	DATE: DEC. 2005 SHEET 64 OF 185