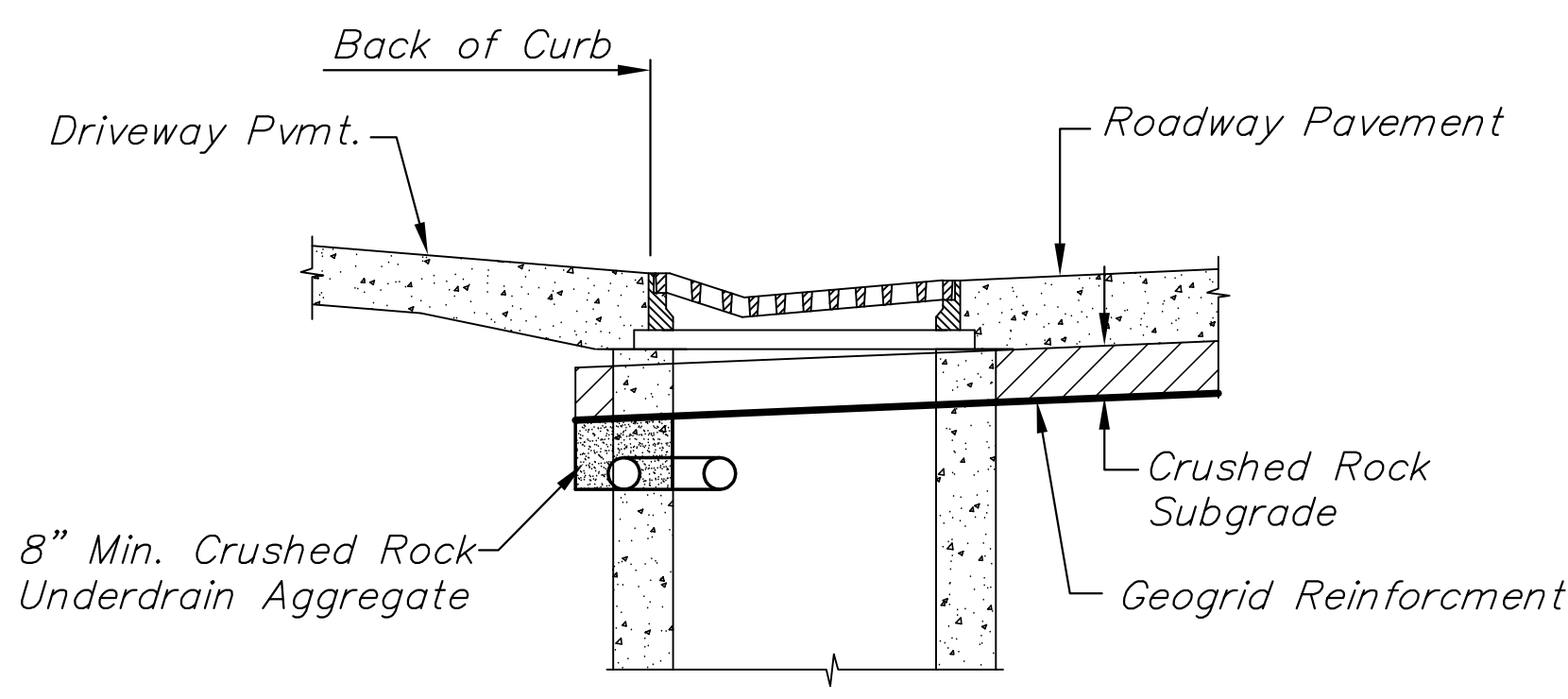
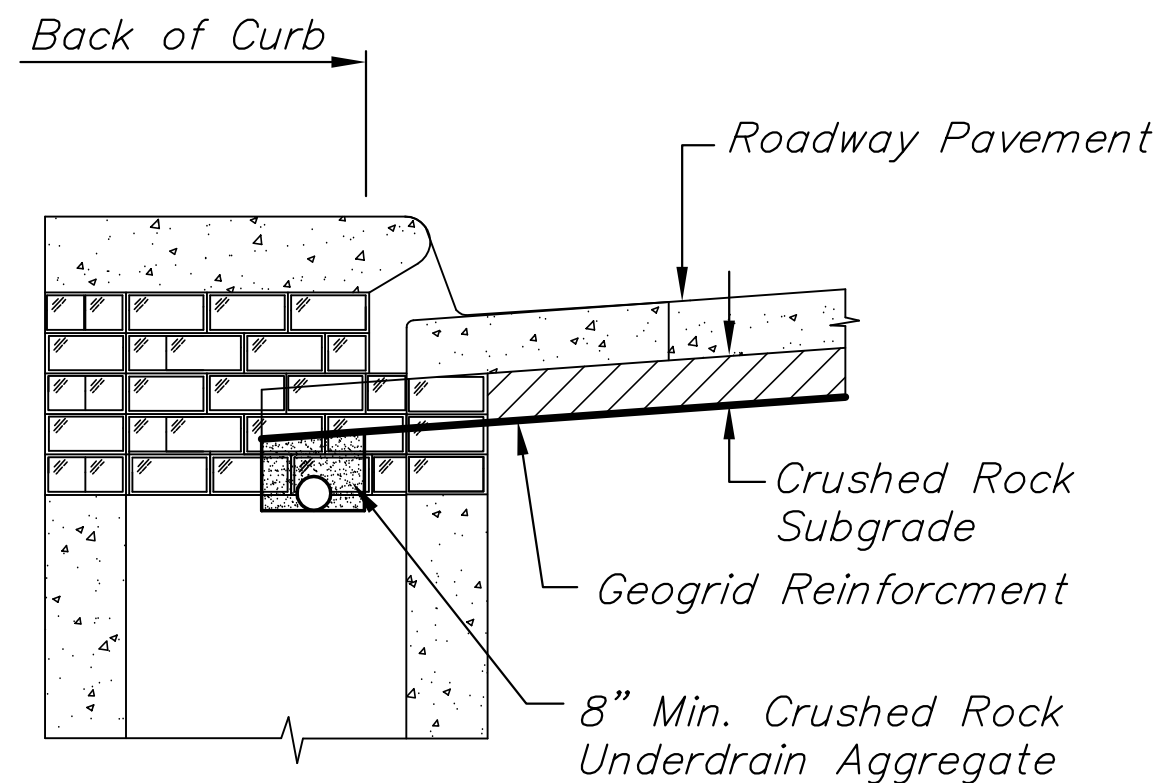


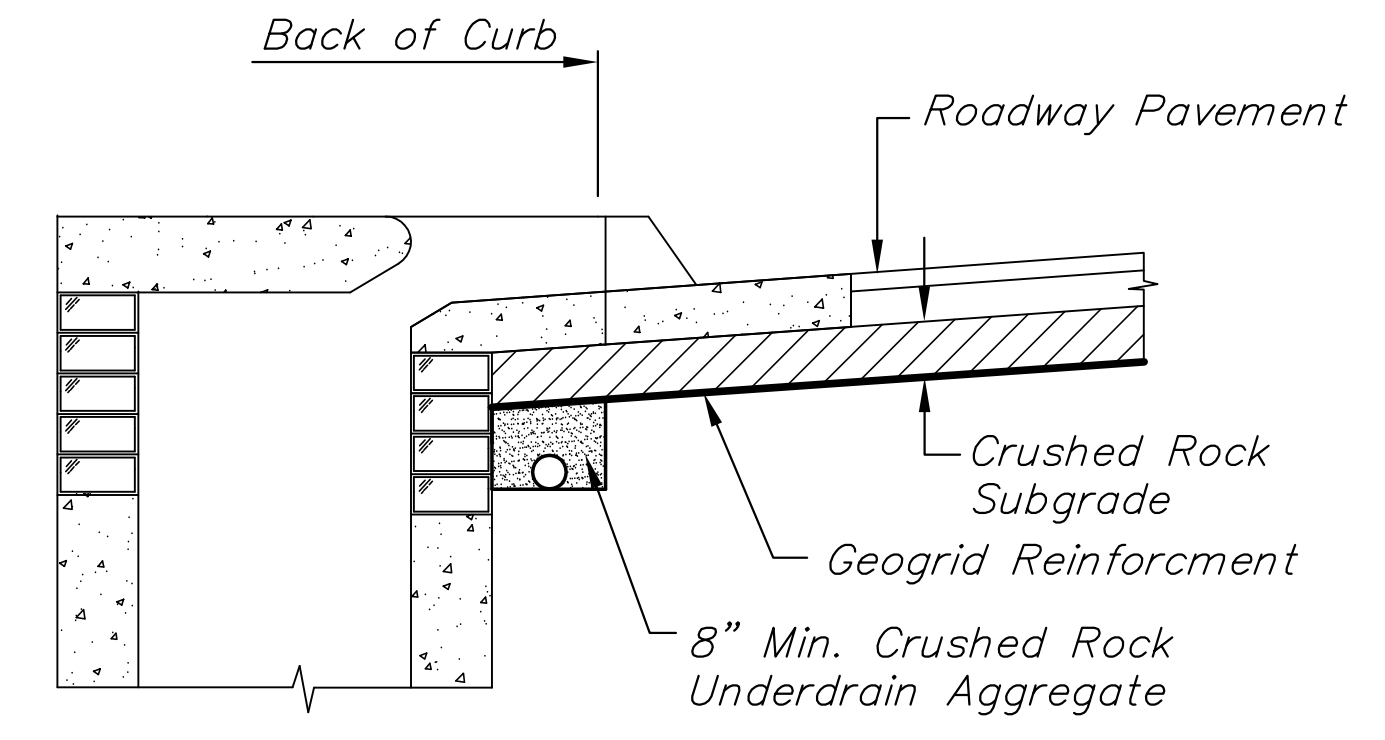
STATE	PROJECT NO.	YEAR	SHEET NO.	TOTAL SHEETS
KANSAS	87 N-0357-01	2008	69	185



SECTION C-C



SECTION B-B



SECTION A-A

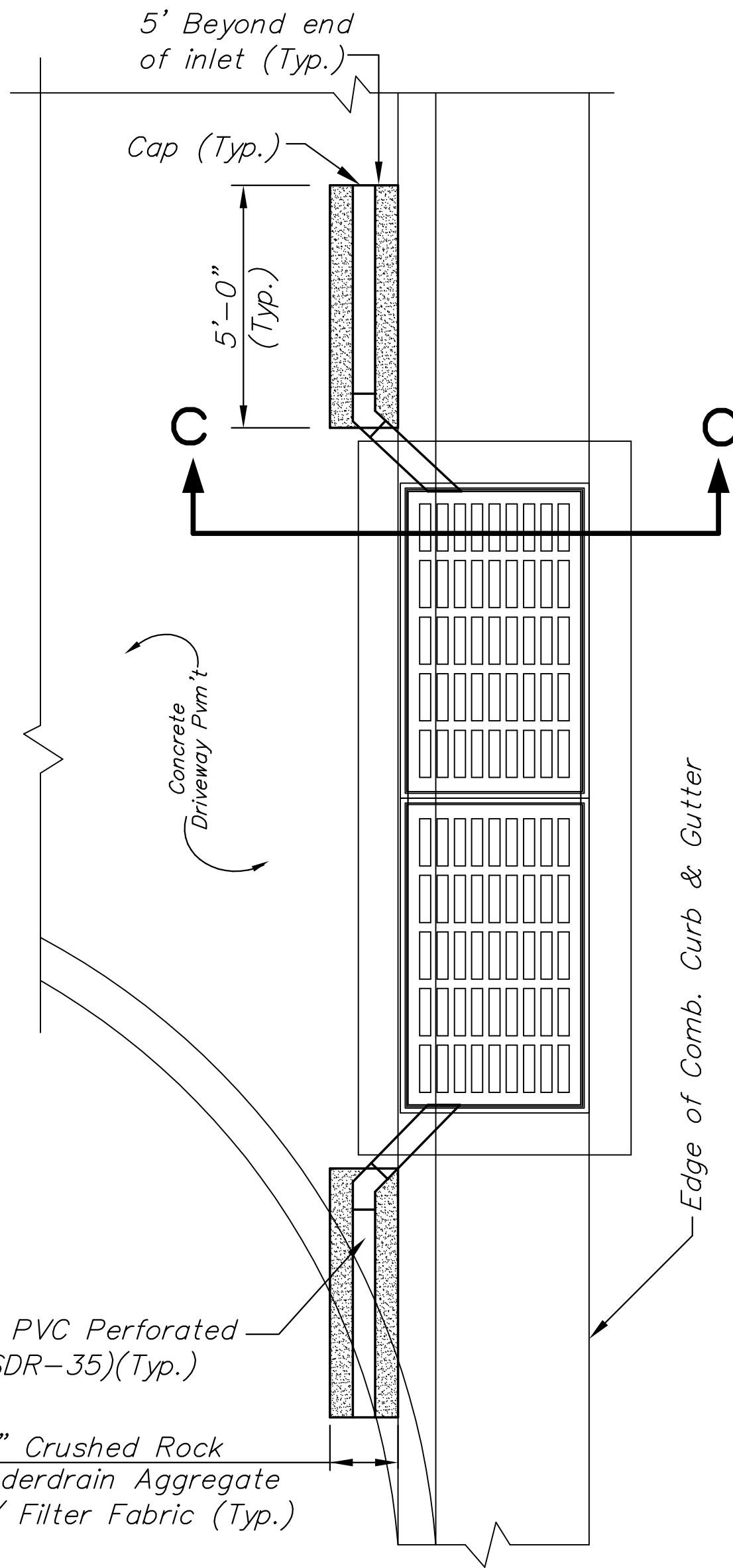
PAVEMENT UNDERDRAIN AT SUMPS

NOTE:
Place 4" PVC Perforated Pipe at all drainage sump locations.
Cost of Underdrain System at sumps to be incidental to the Reinforced Crushed Rock Subgrade.
Refer to "Pipe Connection Detail" on Sheet No. 73 for connections to structures.

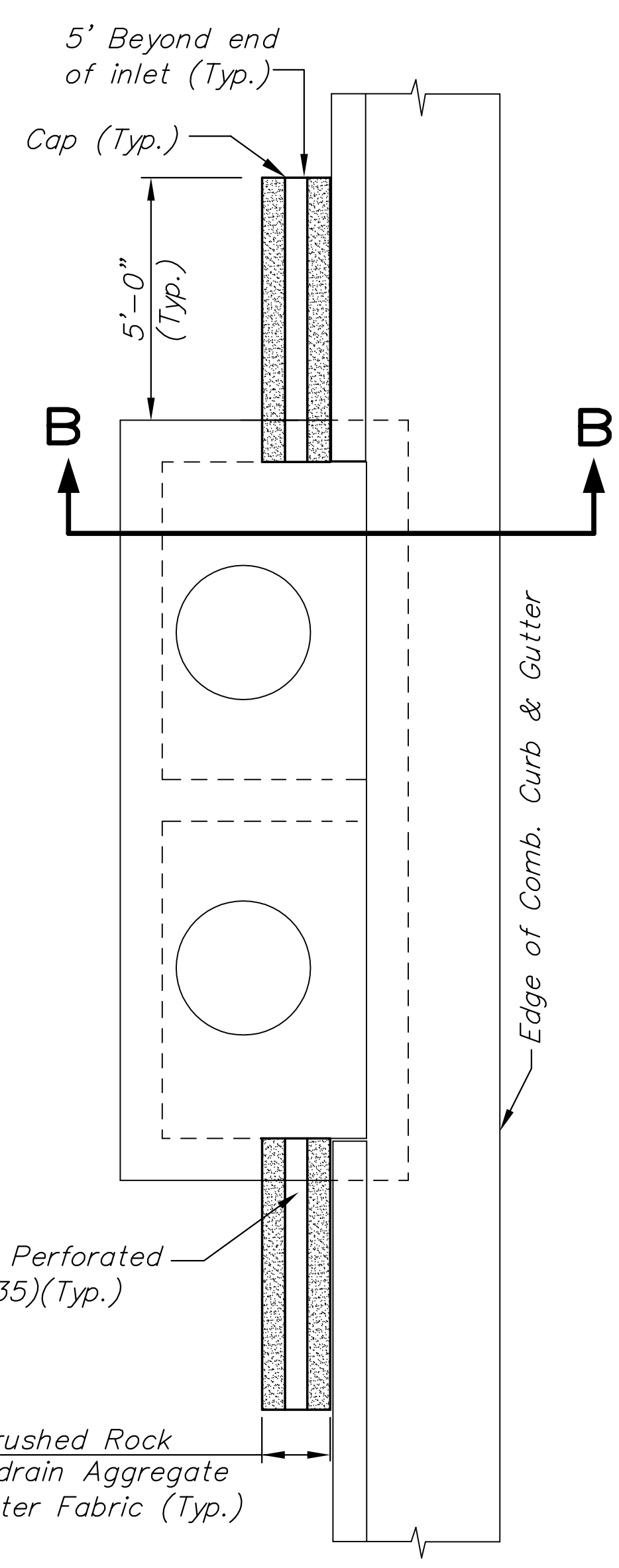
CRUSHED ROCK UNDERDRAIN AGGREGATE GRADATION REQUIREMENTS

Percent of Aggregate Retained	
1 1/2"	0
3/4"	15-60
# 4	40-80
#40	74-92
P-200	4-12

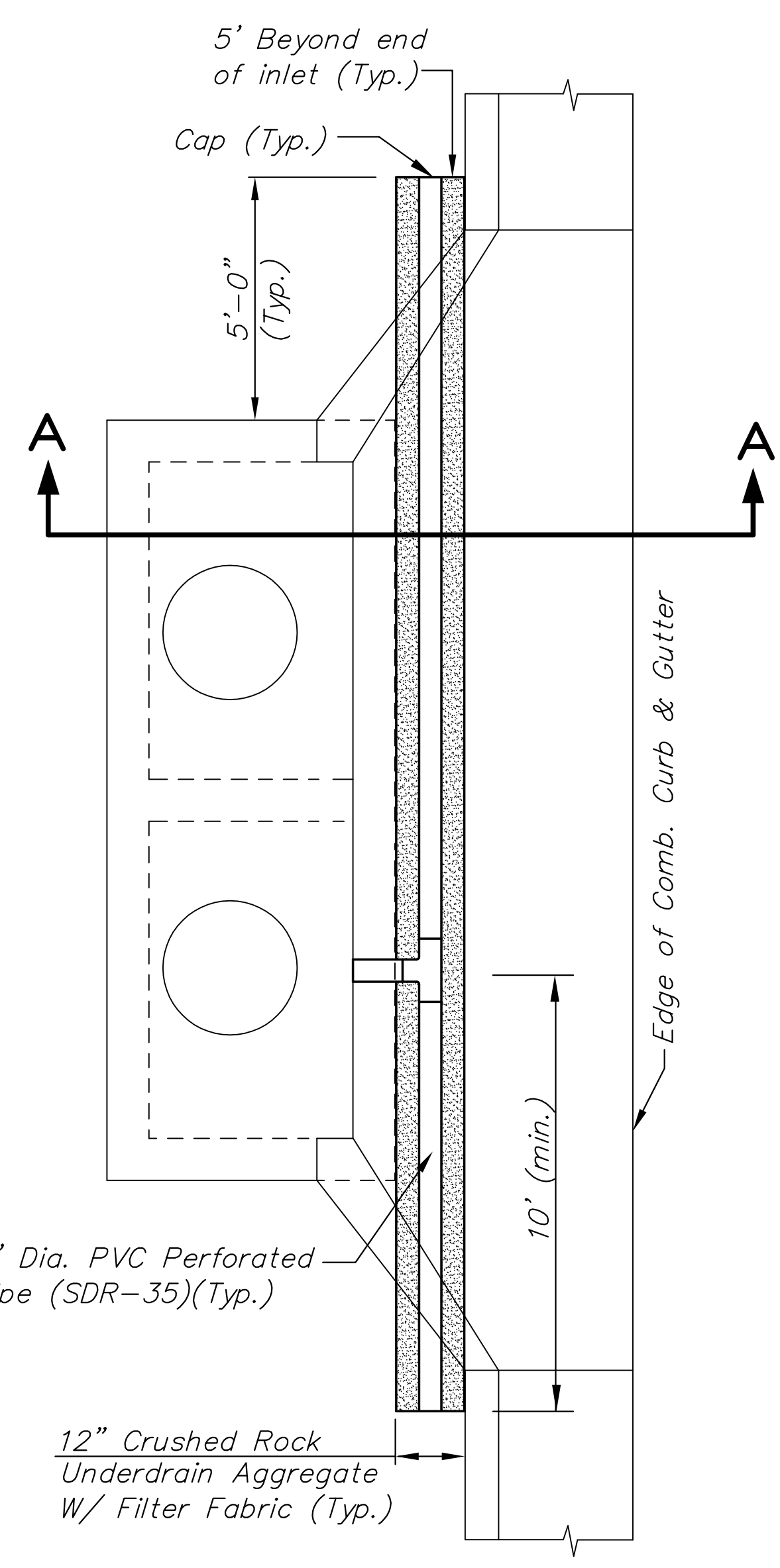
Rock quality shall be the same as specified for coarse aggregate for asphalt concrete mixes.



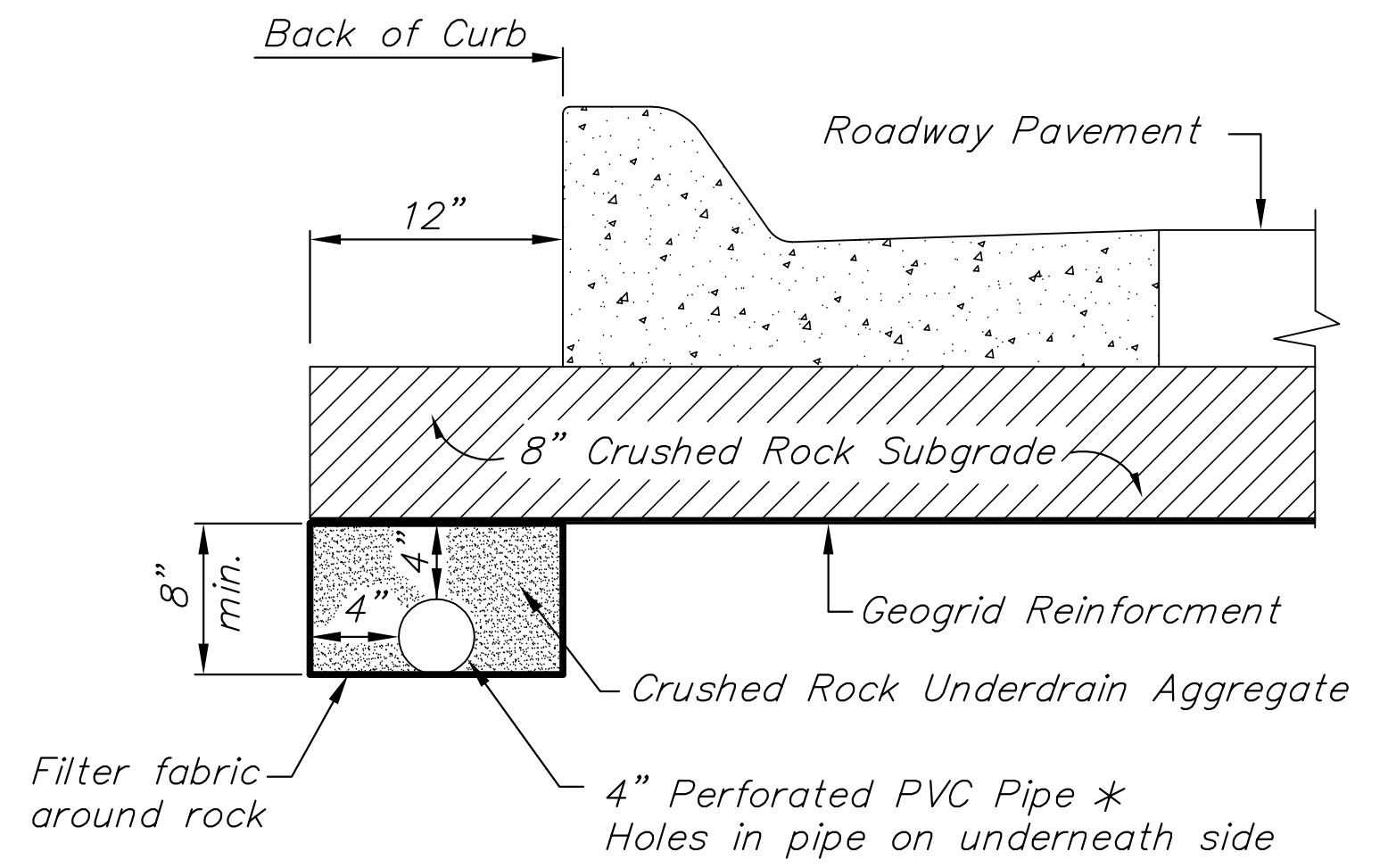
DRIVEWAY GRATE INLET
TYPE 2 INLET SIMILAR



TYPE 1 INLET



TYPE 1-A INLET



* Minimum 16 perforations per lineal feet @ 1/4" Dia. Perforations to be on bottom half of pipe.

PIPE DRAIN DETAIL

KANSAS DEPARTMENT OF TRANSPORTATION			
OLIVER IMPROVEMENTS PAVEMENT UNDERDRAIN			
PROJECT NO. 87 N-0357-01		SEDGWICK CO.	
M K E C ENGINEERING CONSULTANTS, INC.			
WICHITA, KANSAS			
DESIGNED BY: LAC	CHECKED BY: JRA		
DRAWN BY: WNU	DATE: 4/01/05	SHEET 69 OF 185	