

○ Install new 1" service and connect to proposed 8" water main. Setter to be connected to existing customer's water service.  
 2-Long Services  
 3-Short Services

**HILLTOP MANOR**  
 RESERVE "C"

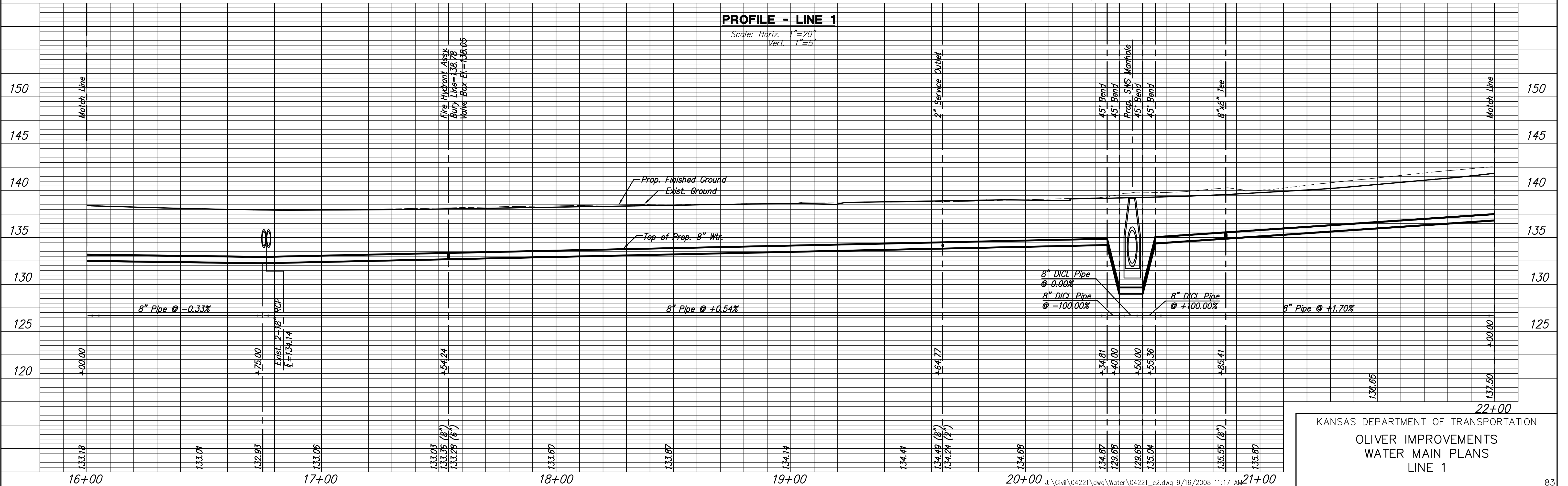
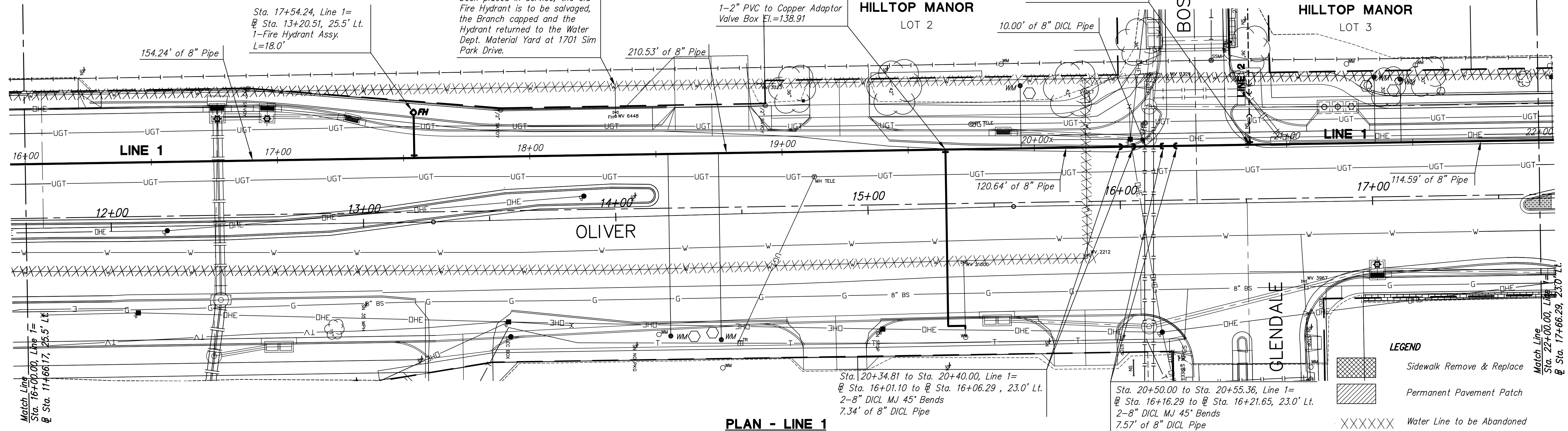
After new 8" water line has been placed in service, the old Fire Hydrant is to be salvaged, the Branch capped and the Hydrant returned to the Water Dept. Material Yard at 1701 Sim Park Drive.

Sta. 19+64.77, Line 1=  
 @ Sta. 15+31.31, 23.3' Lt.  
 1-2" Outlet Assy.  
 76.8' of 2" PVC Pipe  
 2-2" PVC 90° Elbows  
 1-2" PVC to Copper Adaptor  
 Valve Box El.=138.91

Sta. 20+85.41, Line 1=  
 @ Sta. 16+51.69, 23.0' Lt.  
 1-8"x8" DICL MJ Tee  
 1-8" Anch. Valve Assy. (W)  
 (MJ Gate Valve)  
 Valve Box El.=139.58

STATE	PROJECT NO.	YEAR	SHEET NO.	SHEETS
KANSAS	87 N-0357-01	2008	83	185

Scale: 1"=20'



KANSAS DEPARTMENT OF TRANSPORTATION  
 OLIVER IMPROVEMENTS  
 WATER MAIN PLANS  
 LINE 1