

○ Install new 1" service and connect to proposed 8" water main. Setter to be connected to existing customer's water service.
 9-Long Services
 1-Short Services

TACO GRANDE ADD.

Install approx. 140 L.F. of Grade B, 66" O.D. Steel Casing Pipe and cap both ends. Min. wall thickness to be 0.875"
 Top of Pipe (W. End)=155.0
 Top of Pipe (E. End)=153.0

Remove & Replace 20.0 L.F. of Curb & Gutter

Const. 28.8 S.Y. of Permanent Pavement Patch See Sh. No. 73

Sta. 48+55.79, Line 1=
 @ Sta. 43+36.92, 11.4' Rt.
 1-8" DI CL MJ 45' Bend

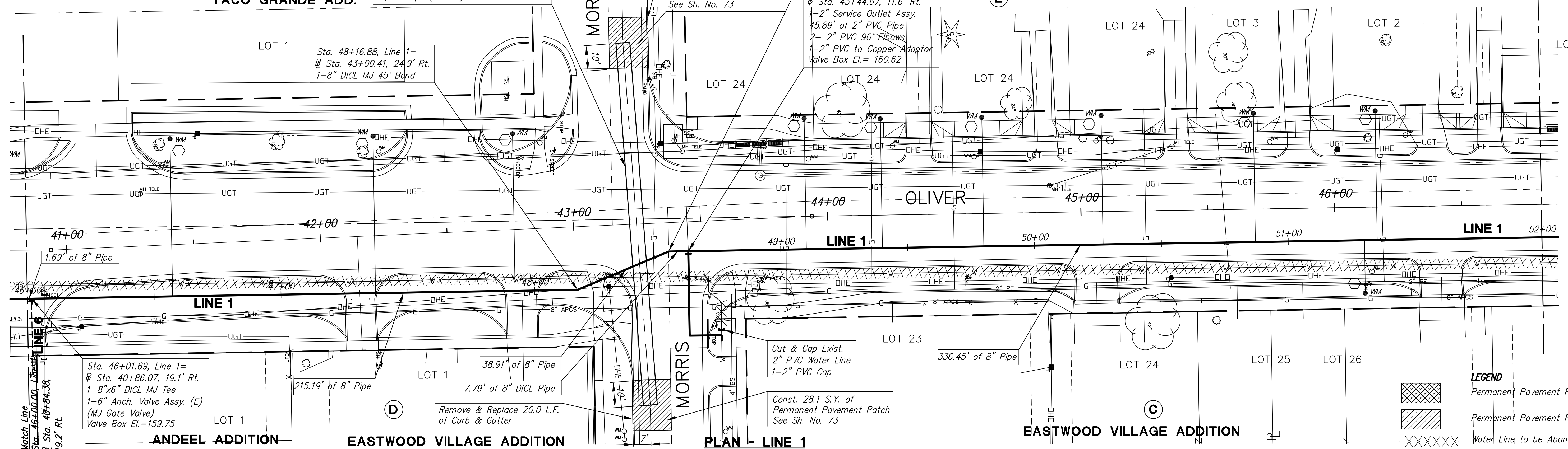
Sta. 48+63.55, Line 1=
 @ Sta. 43+44.67, 11.6' Rt.
 1-2" Service Outlet Asy.
 45.89' of 2" PVC Pipe
 2- 2" PVC 90° Elbows
 1-2" PVC to Copper Adaptor
 Valve Box El.= 160.62

**BROWN'S SUBDIVISION
 ON COLLEGE HILL**

Scale: 1"=20'

STATE	PROJECT NO.	YEAR	SHEET NO.	SHEETS
KANSAS	87 N-0357-01	2008	88	185

WARD AND GRAHAM ADDITION

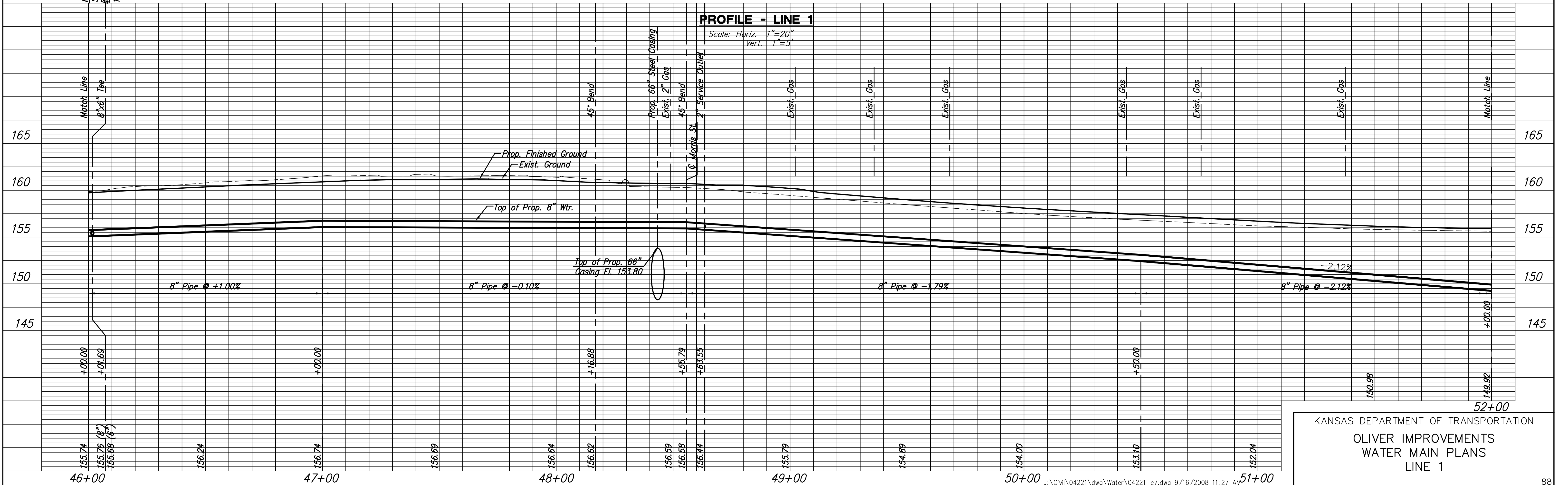


LEGEND

- Permanent Pavement Patch
- Permanent Pavement Patch
- Water Line to be Abandoned

PROFILE - LINE 1

Scale: Horiz. 1"=20'
 Vert. 1"=5'



KANSAS DEPARTMENT OF TRANSPORTATION
 OLIVER IMPROVEMENTS
 WATER MAIN PLANS
 LINE 1