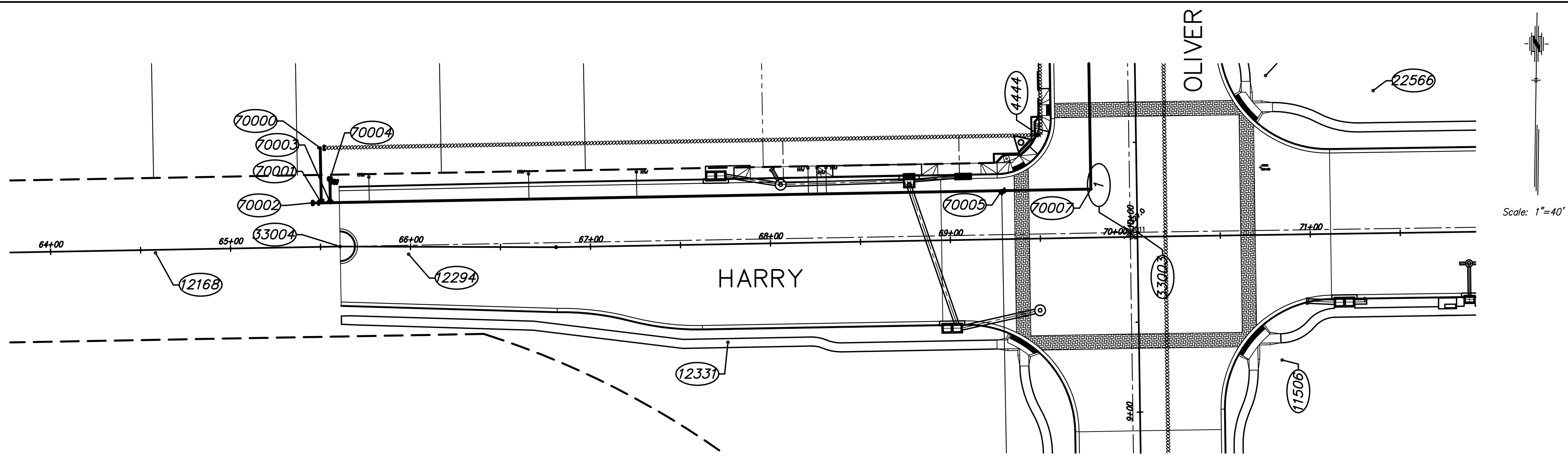


STATE	PROJECT NO.	YEAR	SHEET NO.	TOTAL SHEETS
KANSAS	87 N-0357-01	2008	97	185



CONTROL TABLE					
POINT NUMBER	STATION	OFFSET	NORTHING	EASTING	DESC
1	10+01.36/69+98.40	5.60' LT/1.38' LT	1678234.2200	1665529.6600	CALC
26	2+80.30	0.00	1683987.1700	1670704.4000	SD M.JH26
70	50+70.78 (HARRY)	51.10' RT	1678147.3400	1663610.2800	SD M.JH70
102	36+77.09	52.34' RT	1680918.2200	1666022.0900	SDMO
103	30+36.64	57.56' RT	1680278.4600	1666077.9100	SDMO
104	62+99.74	8.42' LT	1683531.4800	1665446.0500	SD 1/2 PEG
202	42+80.45	28.22' LT	1681511.5200	1665453.9100	SDMO
205	22+43.95	34.22' RT	1679477.2300	1665547.2200	SDMO
1000	36+09.02	554.00' RT	1680850.3600	1666048.7300	SD COW DISC
1001	60+78.33	35.38' RT	1683310.8080	1665493.4540	NAIL
1002	56+52.85	67.84' LT	1682883.7930	1665388.7420	BM 8
1077	59+45.57	47.72' RT	1683175.8180	1665502.0850	PKN
1317	56+07.62	50.91' LT	1682838.8430	1665406.4030	SD 5/8 COEDEKE
1649	52+56.29	28.51' RT	1682488.8560	1665491.5320	NAIL
1787	51+27.55	49.71' LT	1682358.8540	1665415.4090	SD 1/2" BAR
1897	49+45.67	39.29' RT	1682178.4450	1665507.3630	NAIL
2045	49+93.15	52.51' LT	1682224.4250	1665414.8010	BM 7
2320	47+32.01	39.84' LT	1681963.5310	1665431.7170	SD 1" PIPE
2656	43+32.23	56.59' LT	1681561.9830	1665423.2820	BM 6
2758	40+37.66	25.46' RT	1681270.2680	1665516.0950	NAIL
2942	38+12.32	45.00' RT	1681045.0050	1665536.5160	SD 3/4" PIPE
2987	37+04.35	43.57' RT	1680937.5790	1665536.8340	BM 1 CITY
3321	33+70.95	30.64' RT	1680604.0310	1665525.7220	NAIL
3976	19+41.85	28.60' RT	1679175.0750	1665546.4010	NAIL
4404	14+60.42	42.68' LT	1678692.1390	1665483.8600	SD 1/2" SAVOY
4418	13+55.48	43.69' LT	1678587.2030	1665485.6510	SD 1/2" SAVOY
4439	12+54.97	53.98' LT	1678487.0260	1665477.2540	SD 1/2" SAVOY
4444	10+55.02	53.96' LT	1678287.1010	1665480.4540	NAIL
10206	16+10.40	32.26' LT	1678842.7000	1665490.8300	SDMO
10207	11+04.66	58.03' RT	1678338.5200	1665591.6400	SDMO
11123	75+67.41	35.39' RT	1678205.8600	1666099.1490	NAIL
11155	10+85.96	72.56' RT	1678320.0480	1665906.4630	NAIL
11506	9+27.84	79.37' RT	1678161.9290	1665615.6710	NAIL
11692	6+65.32	97.18' RT	1677898.4710	1665637.0180	NAIL
11763	4+12.59	33.79' RT	1677645.6300	1665574.0830	NAIL
11904	5+34.47	68.40' LT	1677767.3300	1665471.6720	NAIL
12168	64+58.27	1.67' RT	1678221.4890	1664989.6710	NAIL
12294	65+98.87	4.91' RT	1678220.7700	1665130.2980	NAIL
12331	67+75.40	57.06' RT	1678171.7900	1665307.7390	NAIL
22518	46+13.02	30.11' RT	1681845.6890	1665503.5900	NAIL
22545	44+55.75	24.72' RT	1681688.3600	1665500.7600	NAIL
22566	71+36.14	76.85' LT	1678311.7260	1665666.2690	NAIL
22568	49+92.98	26.25' RT	1682225.5440	1665493.5580	NAIL
80001	30+13.95	64.88' RT	1680247.6227	1665565.6319	BM 2
80002	20+57.23	65.45' RT	1679291.0352	1665581.4131	BM 3
80003	16+44.38	63.44' LT	1678876.1850	1665459.1000	BM 4

WATER TABLE					
POINT NUMBER	STATION	OFFSET	NORTHING	EASTING	DESC
70000	65+50.83	55.00' LT	1678279.8140	1665081.2111	90° Bend
70001	65+50.87	24.50' LT	1678249.3246	1665081.7992	Tee
70002	65+45.87	24.51' LT	1678249.2352	1665076.8000	Blowoff
70003	65+55.87	24.50' LT	1678249.4140	1665086.7984	FH Assy
70004	65+55.87	37.50' LT	1678262.4119	1665086.5660	FH
70005	69+29.00	27.00' LT	1678256.0843	1665459.8403	Tee
70006	7+02.95	73.95' LT	1677934.8690	1665465.8839	Blowoff
70007	10+24.43	25.50' LT	1678256.9704	1665509.3941	90° Bend
70008	13+20.51	25.50' LT	1678553.0153	1665504.6871	FH Assy

J:\Civil\04221\dwg\Water\04221-BUBBLE-WTR.dwg 09/10/2008 04:51:36 AM CST

KANSAS DEPARTMENT OF TRANSPORTATION

**OLIVER IMPROVEMENTS
WATER BUBBLE MAP**

PROJECT NO. 87 N-0357-01 SEDGWICK CO.

M K E C ENGINEERING CONSULTANTS, INC.
WICHITA, KANSAS

DESIGNED BY: LAC	CHECKED BY: JRA
DRAWN BY: WNJ	DATE: 4/07/05 SHEET 97 OF 185