

GENERAL NOTES

1. Contractor will be required to provide a minimum advance notice of seventy-two (72) hours to utility companies prior to starting any excavation as follows:

Kansas One-Call 687-2470

The Contractor must notify the following in case of an emergency:

Cox Communications 262-0661
 Kansas Gas Service 383-8600
 Westar 383-8600
 AT&T 1-800-286-8313
 City of Wichita Water Department 262-6000
 City of Wichita Sewer Maintenance 262-6000

2. Existing utilities and their location, as shown on the plans, represent the best information obtainable for design. Location information has been obtained from the various utility companies and is either from company record drawings or company-provided field locations. The Contractor will be required to work around existing utilities within the right-of-way which do not conflict with proposed construction.

3. A saw cut of the full depth of existing surface courses or pavement thickness shall be provided at locations where proposed construction abuts an existing surface course or pavement for which partial removal of that surface or pavement is required, except when such saw cuts are within three (3) feet of an existing joint the limits of removal shall be extended to the existing joint.

4. This project is located within the limits of a larger project which will include building construction. The General Contractor for the project will submit a Storm Water Pollution Prevention Plan for the entire project prior to beginning any work on this project.

5. This project is to be constructed in accordance with City of Wichita Standard Specifications for the Construction of City Projects, and Policy on Construction of Public Works Improvements by Private Contract.

6. No work shall begin on this project before required bonds are submitted to the City of Wichita, and the project inspector has been notified.

7. All areas of public R/W disturbed by construction of this project are to be restored in accordance with Administrative Regulation AR 6.5 of the City of Wichita.

PRIVATE STORM SEWER

To Serve Lot 1, Block 1, FlightSafety Addition

PRIVATE PROJECT NUMBER 1860 PPS (607861)

COORDINATE CONTROL TABLE

| CONTROL NO. | DESCRIPTION | NORTHING | EASTING |
|-------------|--|----------|----------|
| ① | SW SECTION CORNER, SEC. 16, T27S, R2E (CHISELED CROSS) | 19949.30 | 19702.23 |
| ② | 5/8" REBAR W/ RUGGLES & BOHM CAP | 20616.15 | 20666.31 |
| ③ | 1/2" REBAR W/ RUGGLES & BOHM CAP | 20198.21 | 20673.56 |
| ④ | MAG NAIL | 20205.40 | 20028.88 |
| ⑤ | 1/2" REBAR W/ RUGGLES & BOHM CAP | 20384.84 | 20109.61 |
| ⑥ | 1/2" REBAR W/ RUGGLES & BOHM CAP | 20489.70 | 20168.64 |
| ⑦ | 1/2" REBAR W/ RUGGLES & BOHM CAP | 20536.04 | 20206.63 |
| ⑧ | 1/2" REBAR W/ RUGGLES & BOHM CAP | 20576.60 | 20265.93 |
| ⑨ | 1/2" REBAR W/ RUGGLES & BOHM CAP | 20610.82 | 20340.35 |

INDEX OF SHEETS

- TITLE SHEET
- SWS LINE 1 PLAN/PROFILE
- DRIVEWAY INLET
- SHALLOW TYPE "P" MH

BENCHMARK

BENCH MARK: CITY OF WICHITA BENCH MARK AT THE SOUTHWEST CORNER OF A RCBC, 200'± NORTH OF CENTRAL AND 40.41' WEST OF BACK OF CURB OF EAST MEDIAN CURB ON WEBB ROAD ELEVATION = 1362.13 (NGVD29)

BENCH MARK: CHISELED SQUARE ON THE TOP OF CURB AT THE NORTH CURB RETURN ON THE EAST SIDE OF THE DRIVE ENTRANCE OFF OF OLD CENTRAL, AT THE SOUTHWEST CORNER OF BEECH ACTIVITY CENTER ELEVATION = 1363.10 (NGVD29)

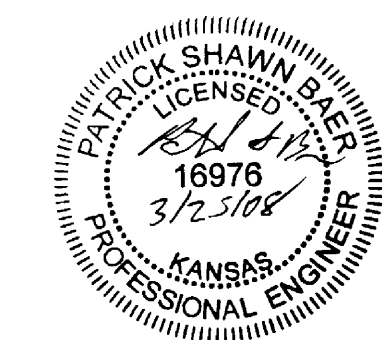
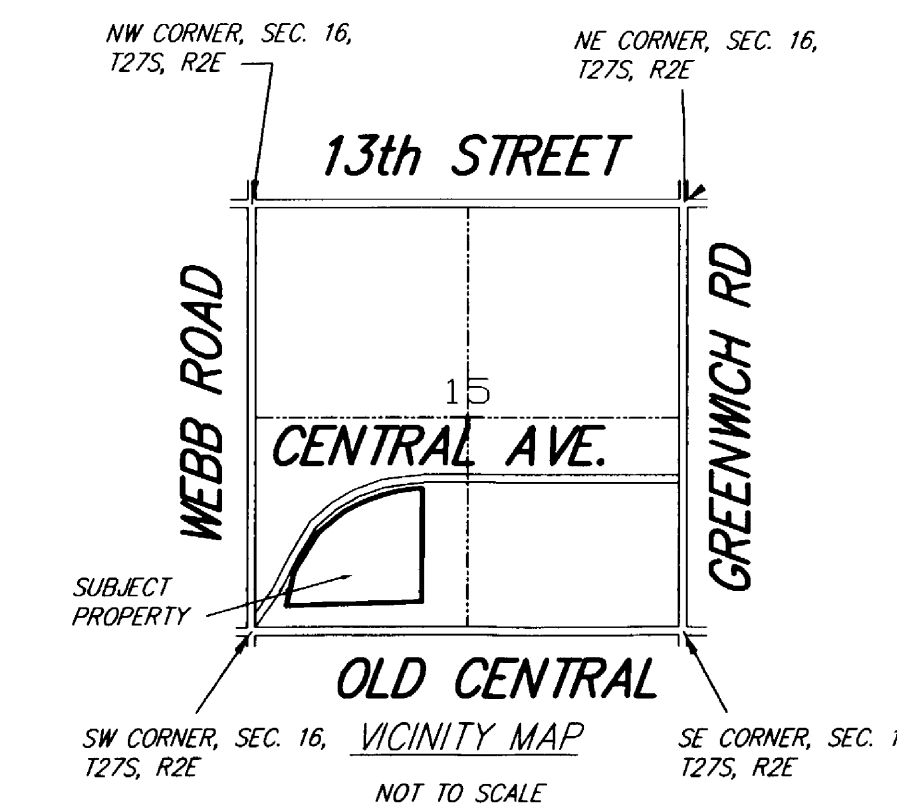
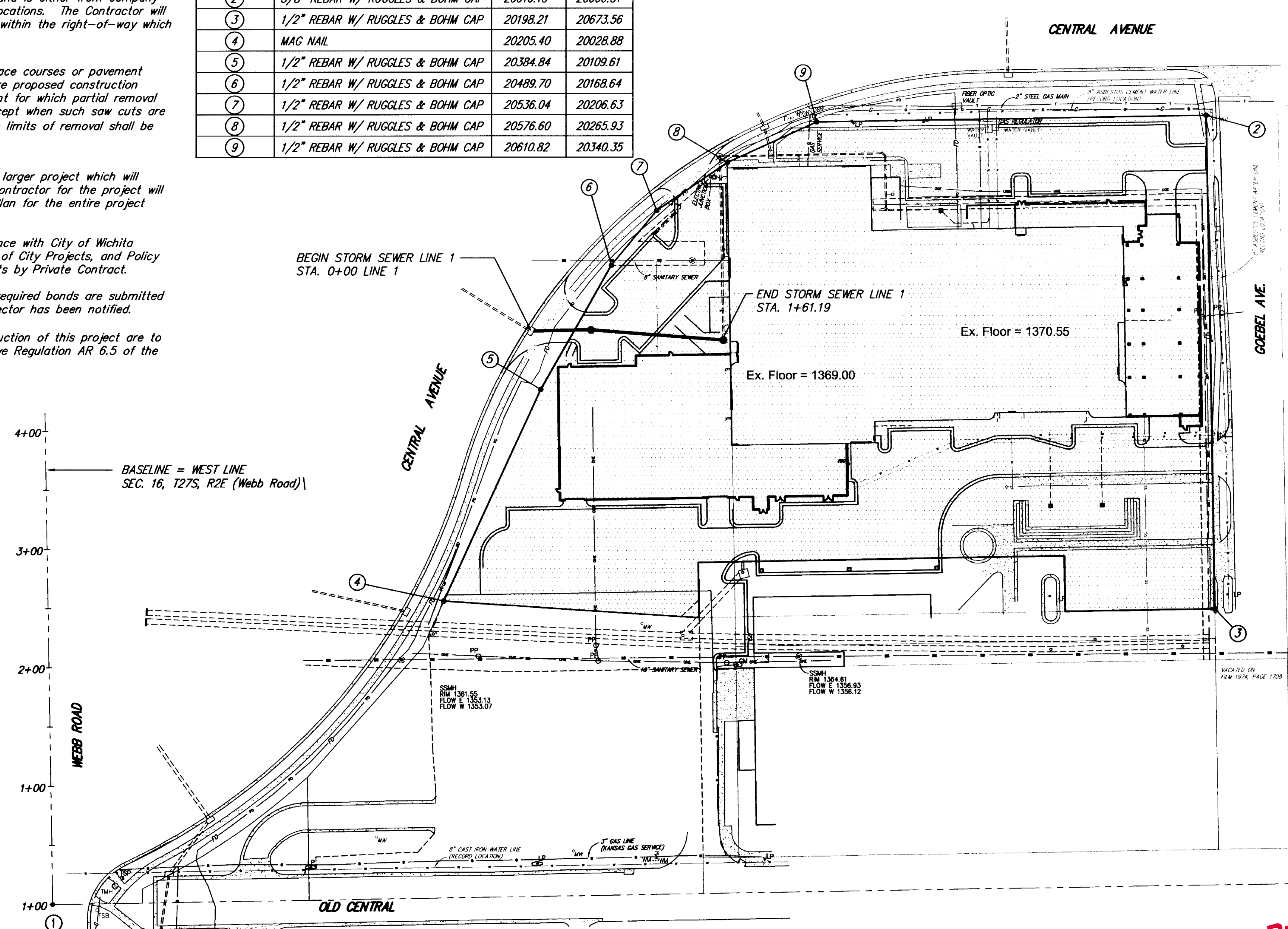
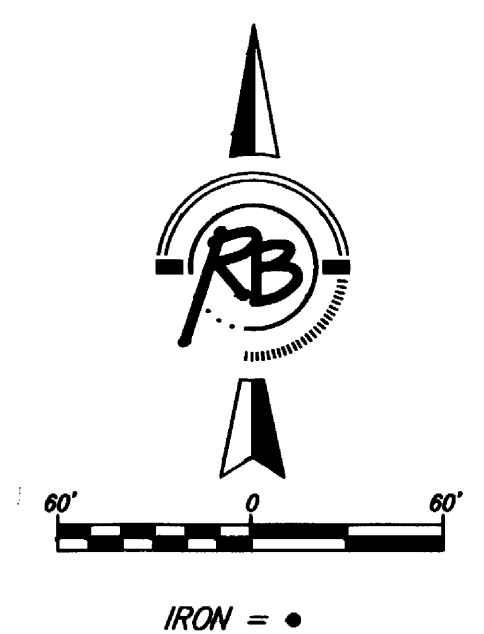
BENCH MARK: CHISELED SQUARE ON THE TOP OF CURB AT THE SOUTH CURB RETURN AT THE SOUTHWEST CORNER OF CENTRAL AND GOEBEL ELEVATION = 1375.02 (NGVD29)

APPROVED AS NOTED
 BY CITY ENGINEER OF WICHITA

Sanitary Sewers _____
 Storm Sewers URH 3/25/08
 Driveway Approaches _____
 Water Mains _____
 Paving _____

NOTE TO CONTRACTORS

Inspection and testing for this project are to be provided by a Licensed Consulting Engineering Firm under contract with the Owner/Developer. Said Inspection to be in accordance with the City of Wichita standard construction engineering practices and certified by a Licensed Professional Engineer. No work shall be performed in dedicated easements or public right-of-way by the Contractor without such inspection, nor shall any work be commenced without written authorization by the City Engineer.



As-Builts
 Contractor: Mies Construction
 Inspection Co.: Ruggles & Bohm
 Inspector: Tim Kelly
 Engineer: Patrick Boer
 PDF Documentation: Patrick Boer

IMPROVEMENT DISTRICT
CITY OF WICHITA, KANSAS
JAMES L. ARMOUR, P.E. - CITY ENGINEER

Ruggles & Bohm, P.A.
 Engineering, Surveying, Land Planning
 924 North Main (316) 264-8008
 Wichita, Kansas 67203 (316) 264-4621 fax
 www.rbkansas.com E-mail: info@rbkansas.com

CONSULTING ENGINEERS
 ELECTRICAL: TENNILL & ASSOCIATES, INC., 177 CHESTERFIELD RD., WICHITA, KS 67203
 PLUMBING: TENNILL & ASSOCIATES, INC., 177 CHESTERFIELD RD., WICHITA, KS 67203
 FIRE PROTECTION: TENNILL & ASSOCIATES, INC., 177 CHESTERFIELD RD., WICHITA, KS 67203

CONTRACTOR: COONROD & ASSOCIATES ARCHITECTURAL DESIGN SERVICES, 3500 S HOOPER ROAD, WICHITA, KANSAS 67227
ARCHITECT: GMA DESIGN GROUP INC., A DIVISION OF ARCO NATIONAL CONSTRUCTION, 1300 SOUTH HERWOOD BLVD. SUITE 801 ST. LOUIS, MISSOURI 63144

PROPOSED BUILDING FOR:
FlightSafety International
 9720 EAST CENTRAL AVENUE
 WICHITA, KANSAS

I CERTIFY TO THE BEST OF MY KNOWLEDGE THAT THE DRAWINGS & SPECIFICATIONS COMPLY WITH THE APPLICABLE MINIMUM BUILDING CODES.

JOB NO.: SJ0717
 DRAWN BY: PSB
 ISSUE DATE: 3-3-08

REVISIONS

| | |
|---|--|
| 1 | |
| 2 | |
| 3 | |
| 4 | |
| 5 | |

SHEET NUMBER
PPS-1