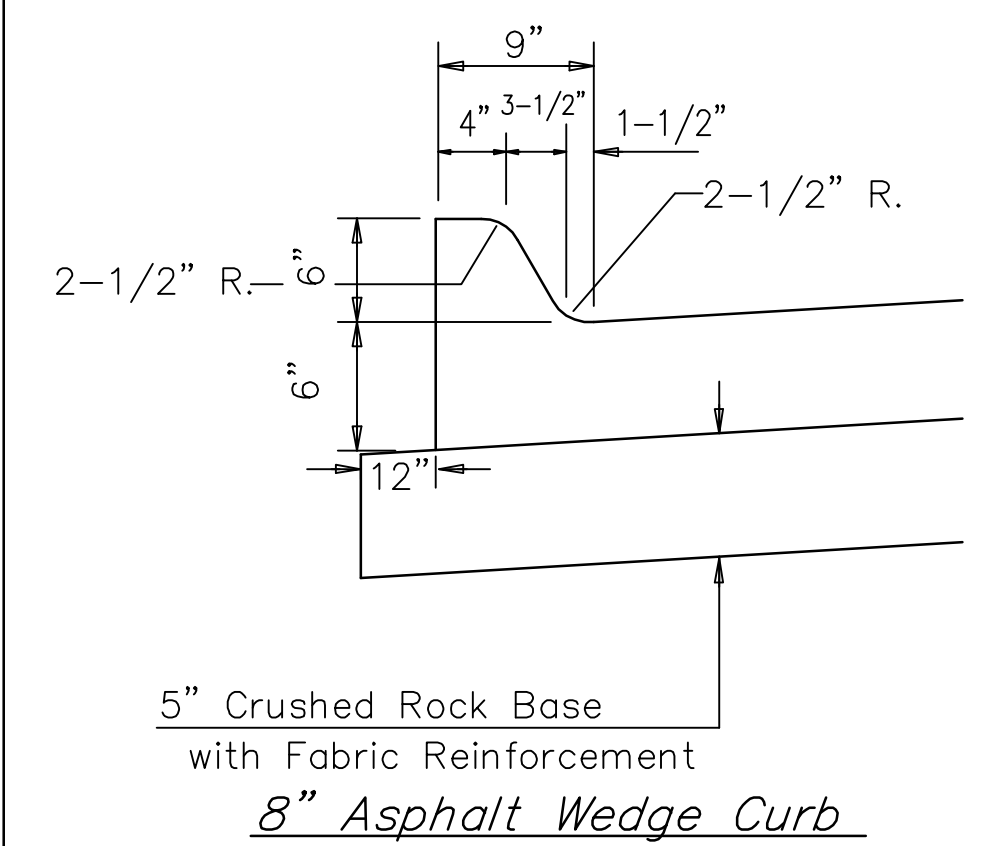
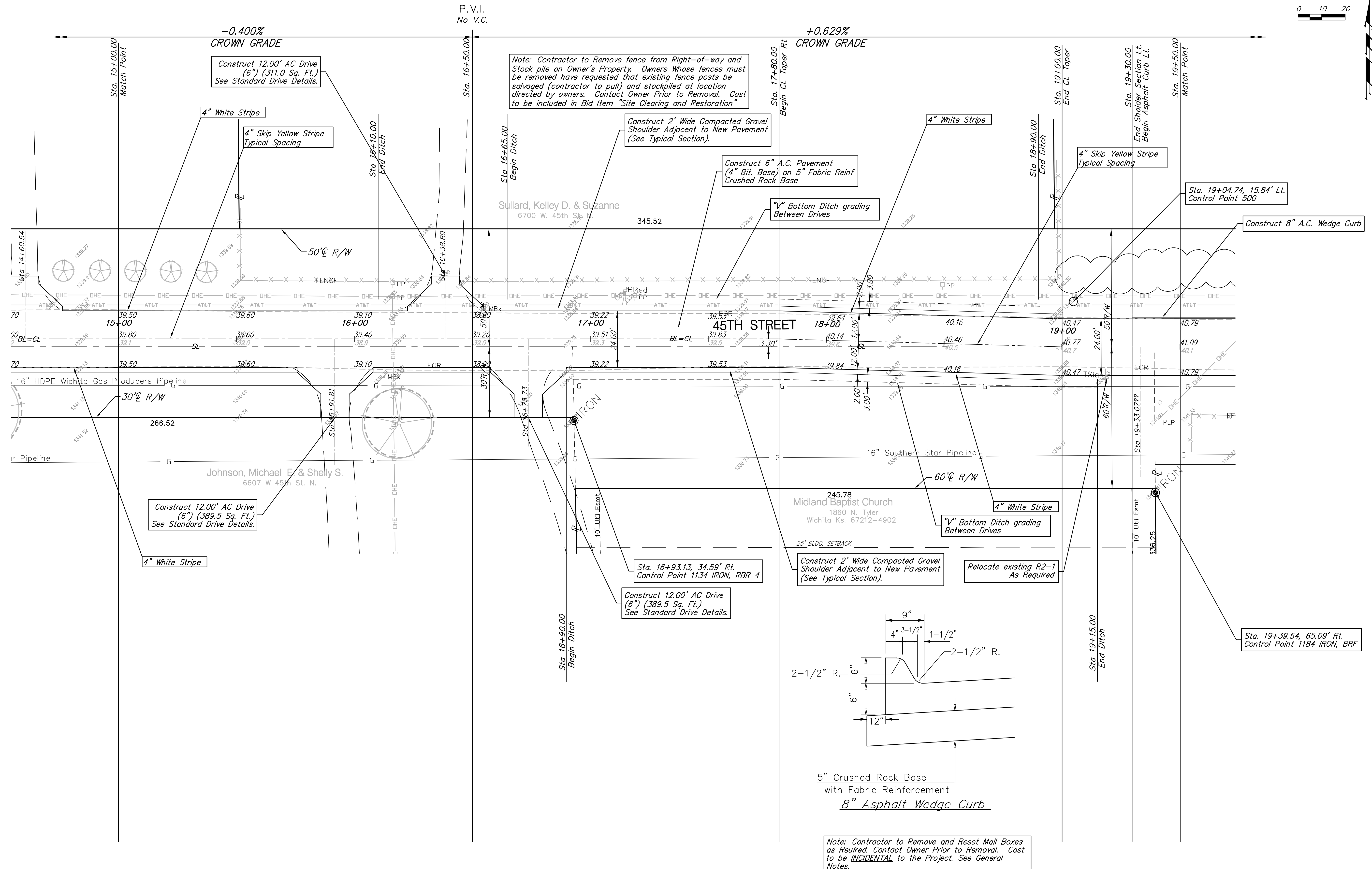
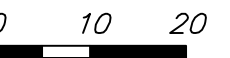


**Benchmarks**

BM #3 : PK Nail in PP 2140' East of Ridge Rd. on the North side of 45th St. N.  
Elev. = 1338.70

Scale: 1" = 20'



Note: Contractor to Remove and Reset Mail Boxes as Required. Contact Owner Prior to Removal. Cost to be INCIDENTAL to the Project. See General Notes.

Drawing File: E:\edgewater\_45th Street Improvement\Land\dwg\base.dwg  
 Design: TCA  
 Drawn: TCA  
 Approved: JFB  
 Scale: 1:20

Project No. 08-08-E183 CAPITAL IMPROVEMENT PROJECT  
**45TH STREET PAVING**  
 RIDGE ROAD TO CIMARRON STREET

**Baughman** **Baughman Company, P.A.**  
 315 Ellis St. Wichita, KS 67211 P 316-262-7171 F 316-262-0149  
 ENGINEERING | SURVEYING | PLANNING | LANDSCAPE ARCHITECTURE

OCTOBER, 2008  
 SHEET 7 OF 25