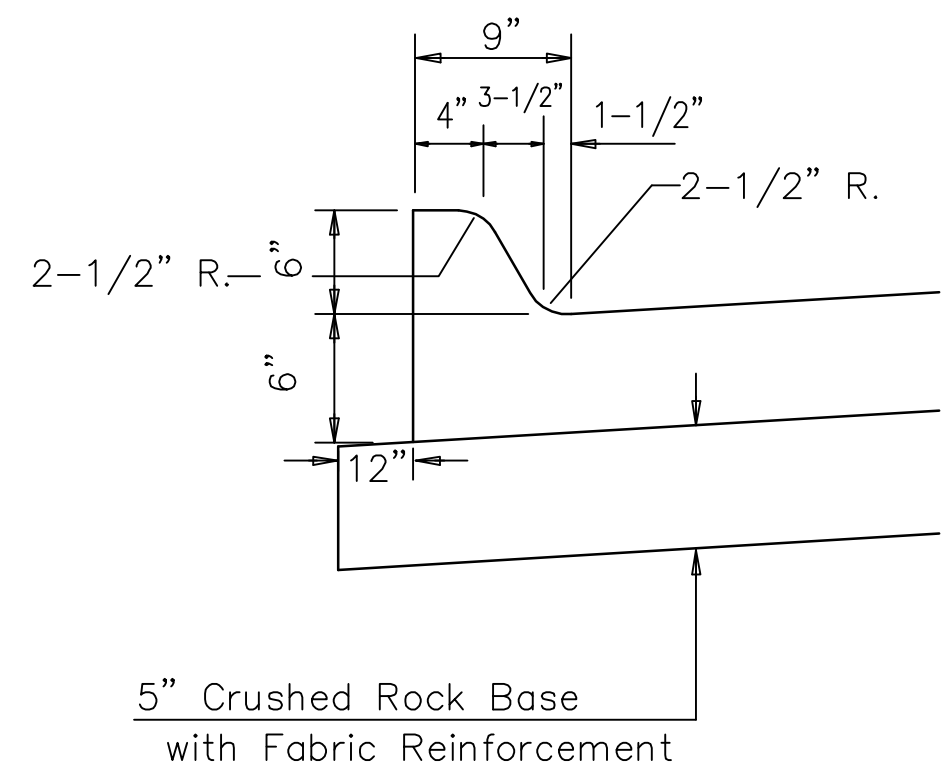
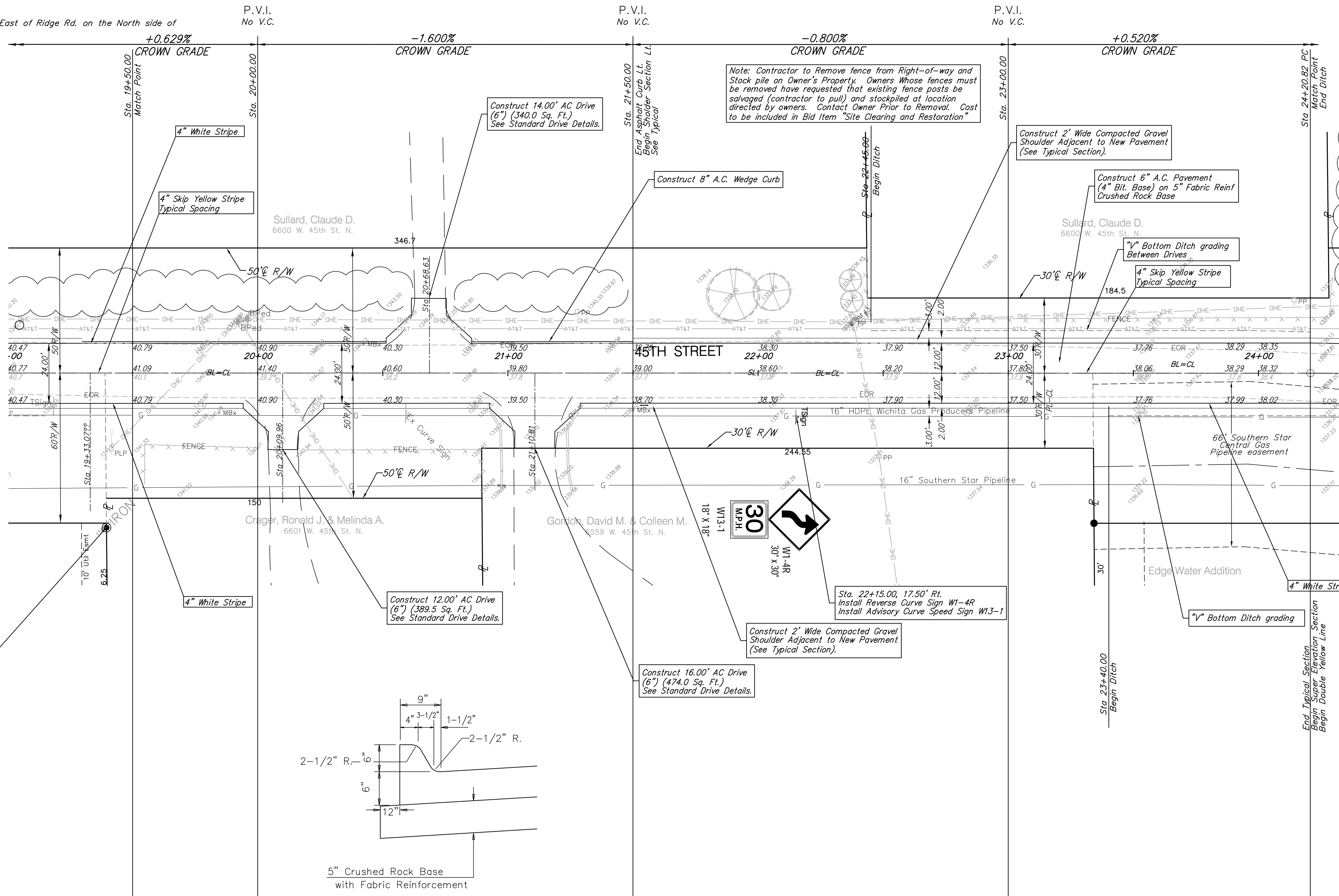
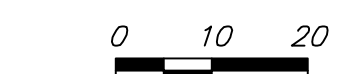


**Benchmarks**

BM #2: Small RR spike in 3rd PP West of Hoover St. on the North side of 45th St. N.  
Elev. = 1337.68

BM #3: PK Nail in PP 2140' East of Ridge Rd. on the North side of 45th St. N.  
Elev. = 1338.70

Scale: 1" = 20'



8" Asphalt Wedge Curb

Note: Contractor to Remove fence from Right-of-way and Stock pile on Owner's Property. Owners Whose fences must be removed have requested that existing fence posts be salvaged (contractor to pull) and stockpiled at location directed by owners. Contact Owner Prior to Removal. Cost to be included in Bid Item "Site Clearing and Restoration"

Construct 2' Wide Compacted Gravel Shoulder Adjacent to New Pavement (See Typical Section).

Construct 6" A.C. Pavement (4" Bit. Base) on 5" Fabric Reinf Crushed Rock Base

Construct 14.00' AC Drive (6") (340.0 Sq. Ft.) See Standard Drive Details.

Construct 8" A.C. Wedge Curb

"V" Bottom Ditch grading Between Drives

Construct 12.00' AC Drive (6") (389.5 Sq. Ft.) See Standard Drive Details.

Sta. 22+15.00, 17.50' Rt. Install Reverse Curve Sign W1-4R Install Advisory Curve Speed Sign W13-1

Construct 16.00' AC Drive (6") (474.0 Sq. Ft.) See Standard Drive Details.

Construct 2' Wide Compacted Gravel Shoulder Adjacent to New Pavement (See Typical Section).

Note: Contractor to Remove and Reset Mail Boxes as Required. Contact Owner Prior to Removal. Cost to be INCIDENTAL to the Project. See General Notes.

Sta. 19+39.54, 65.09' Rt. Control Point 1184 IRON, BRF

Drawing File: E:\Edgewater\_45th Street Improvement\Land\dwg\base.dwg

Project No. 0808E183 CAPITAL IMPROVEMENT PROJECT  
 Design: TCA  
 Drawn: TCA  
 Appointed: JFB  
 Scale: 1:20

45TH STREET PAVING  
 RIDGE ROAD TO CIMARRON STREET  
 PROJECT DESCRIPTION

**Baughman** Baughman Company, P.A.  
 315 Ellis St. Wichita, KS 67211 P 316-262-7271 F 316-262-0149  
 ENGINEERING | SURVEYING | PLANNING | LANDSCAPE ARCHITECTURE

OCTOBER, 2008  
 SHEET 8 OF 25