

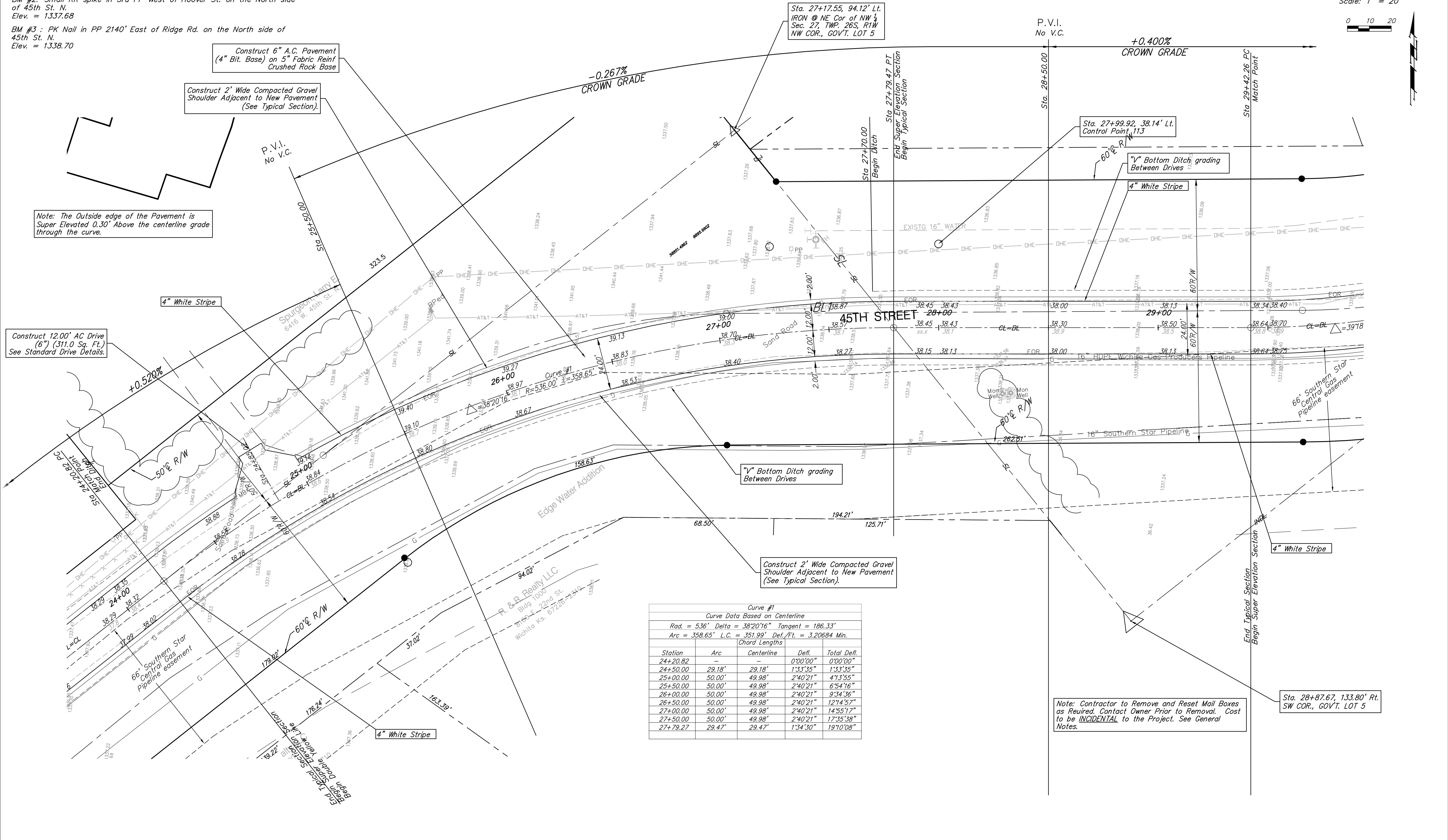
**Benchmarks**

BM #2: Small RR spike in 3rd PP West of Hoover St. on the North side of 45th St. N.  
Elev. = 1337.68

BM #3: PK Nail in PP 2140' East of Ridge Rd. on the North side of 45th St. N.  
Elev. = 1338.70

Scale: 1" = 20'

0 10 20



Note: The Outside edge of the Pavement is Super Elevated 0.30' Above the centerline grade through the curve.

Construct 12.00' AC Drive (6") (311.0 Sq. Ft.) See Standard Drive Details.

Construct 6" A.C. Pavement (4" Bit. Base) on 5" Fabric Reinf Crushed Rock Base

Construct 2' Wide Compacted Gravel Shoulder Adjacent to New Pavement (See Typical Section).

Construct 2' Wide Compacted Gravel Shoulder Adjacent to New Pavement (See Typical Section).

Curve #1 Curve Data Based on Centerline				
Rad. = 536' Delta = 38°20'16" Tangent = 186.33'				
Arc = 358.65' L.C. = 351.99' Def./Ft. = 3.20684 Min.				
Station	Arc	Centerline	Defl.	Total Defl.
24+20.82	-	-	0'00"00"	0'00"00"
24+50.00	29.18'	29.18'	1'33"35"	1'33"35"
25+00.00	50.00'	49.98'	2'40"21"	4'13"55"
25+50.00	50.00'	49.98'	2'40"21"	6'54"16"
26+00.00	50.00'	49.98'	2'40"21"	9'34"36"
26+50.00	50.00'	49.98'	2'40"21"	12'14"57"
27+00.00	50.00'	49.98'	2'40"21"	14'55"17"
27+50.00	50.00'	49.98'	2'40"21"	17'35"38"
27+79.27	29.47'	29.47'	1'34"30"	19'10"08"

Note: Contractor to Remove and Reset Mail Boxes as Required. Contact Owner Prior to Removal. Cost to be INCIDENTAL to the Project. See General Notes.

Sta. 28+87.67, 133.80' Rt. SW COR., GOV'T. LOT 5

Drawing File: E:\Edgewater\_45th Street Improvement\Land\dwg\base.dwg

Design: TCA  
Drawn: TCA  
Approved: JFB  
Scale: 1:20

Project No. 0808E183 CAPITAL IMPROVEMENT PROJECT  
45TH STREET PAVING  
RIDGE ROAD TO CIMARRON STREET  
PROJECT DESCRIPTION

**Baughman** Baughman Company, P.A.  
315 Ellis St. Wichita, KS 67211 P 316-262-7271 F 316-262-0149  
ENGINEERING | SURVEYING | PLANNING | LANDSCAPE ARCHITECTURE

OCTOBER, 2008  
SHEET 9 OF 25