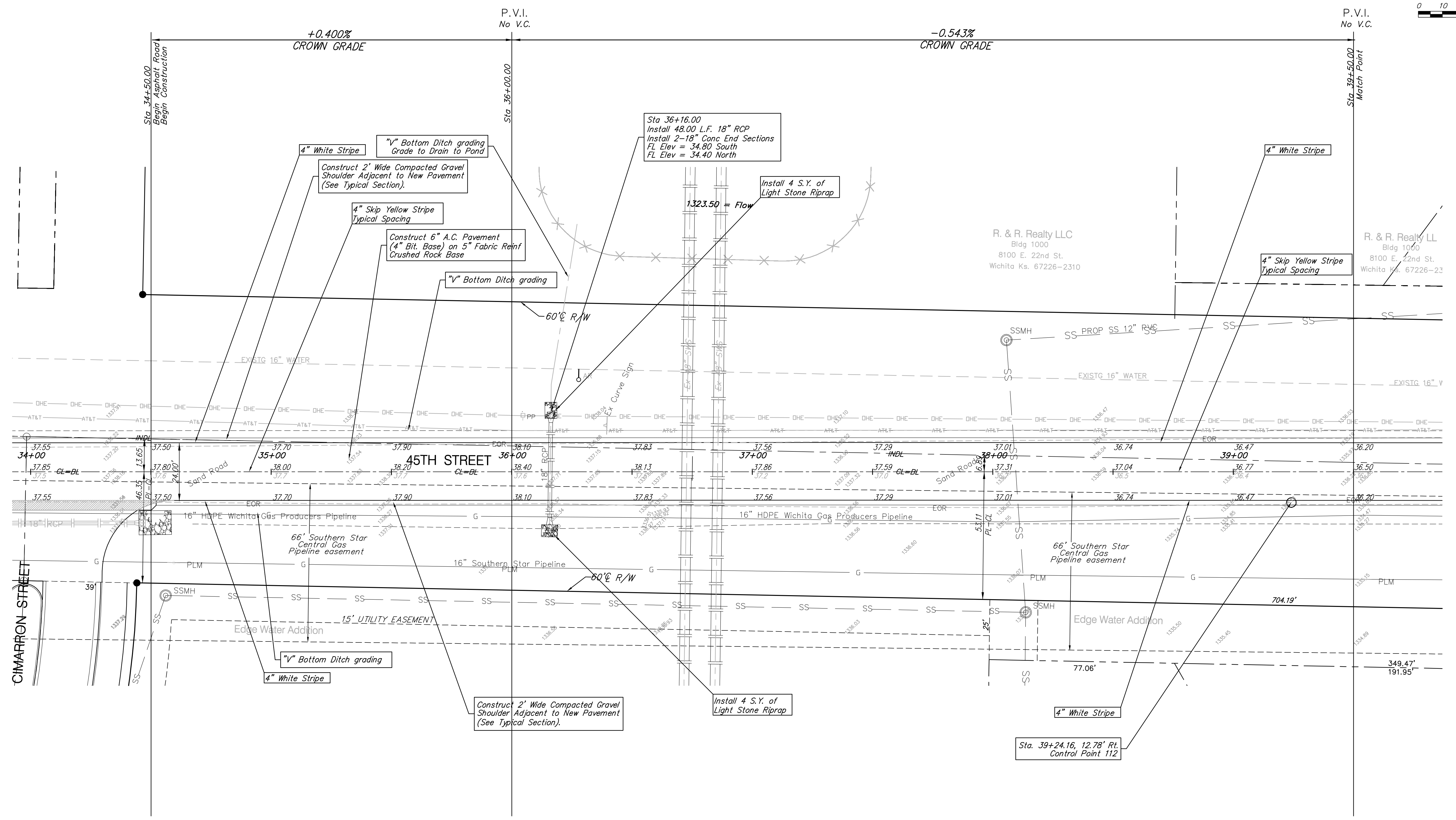
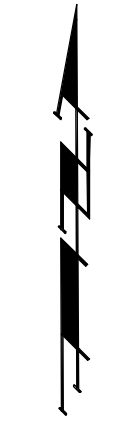
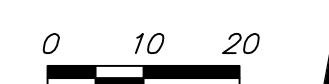


Benchmarks

BM #2: Small RR spike in 3rd PP West of Hoover St. on the North side of 45th St. N.
Elev. = 1337.68

BM #3 : PK Nail in PP 2140' East of Ridge Rd. on the North side of 45th St. N.
Elev. = 1338.70

Scale: 1" = 20'



Drawing File: E:\Edgewater_45th Street Improvement\Land\dwg\base.dwg

Project No. 0808E183 CAPITAL IMPROVEMENT PROJECT
 Design: TCA
 Drawn: TCA
 Appointed: JFB
 Scale: 1:20

45TH STREET PAVING
 CIMARRON STREET TO HOOVER STREET
 PROJECT DESCRIPTION

Baughman Company, P.A.
 315 Ellis St. Wichita, KS 67211 P 316-262-7271 F 316-262-0149
 ENGINEERING | SURVEYING | PLANNING | LANDSCAPE ARCHITECTURE

OCTOBER, 2008
 SHEET 4 OF 19