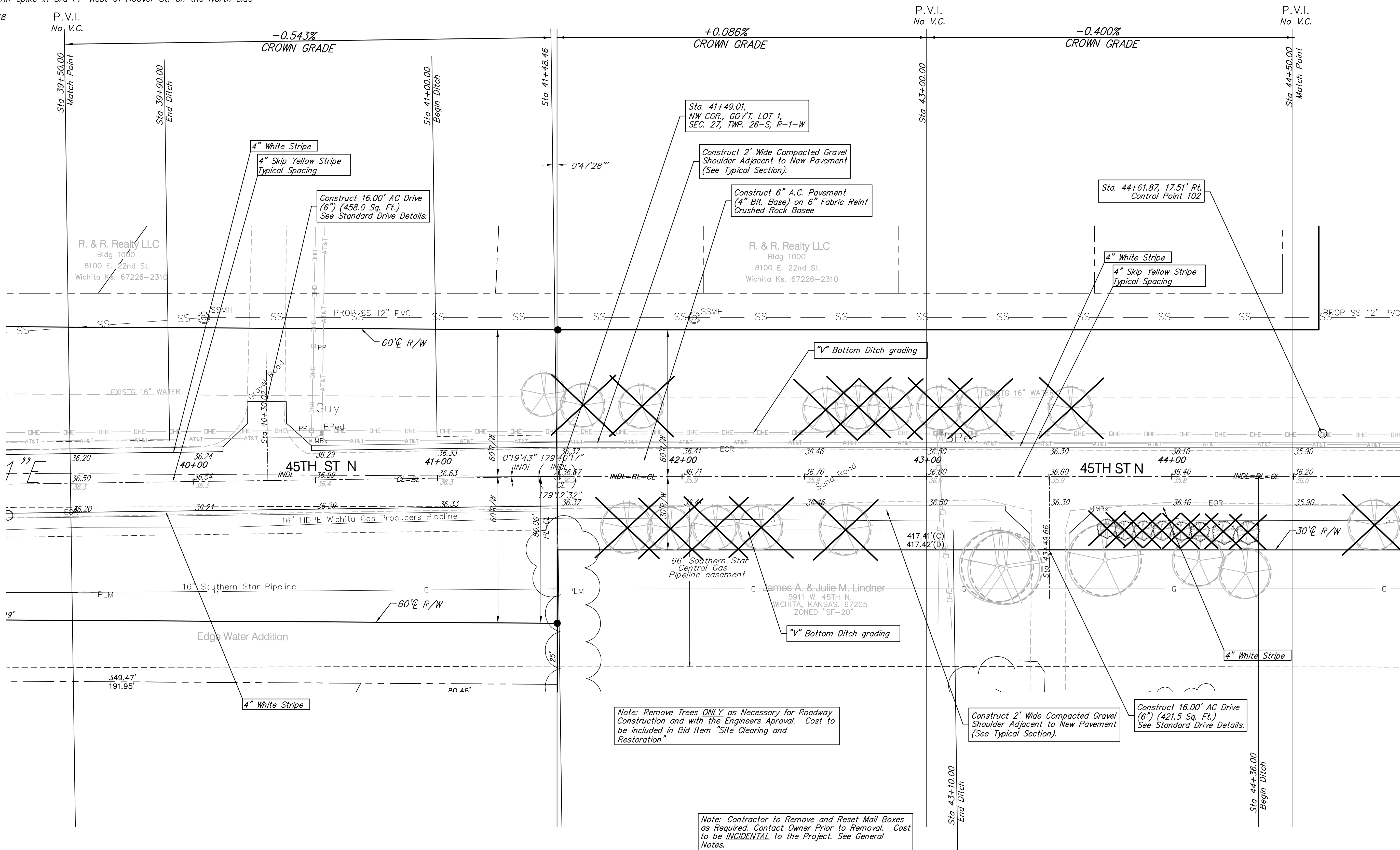
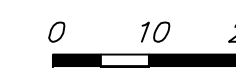


Benchmarks

BM #1: Hoover and 45th St. North - COW Benchmark at NE Corner of Intersection, 10.20' SSE of PP, 58.80' ESE of PP on NW corner, 85.50' NE of gas line marker, 59.00' North of gas line marker, 28.50' East of Centerline, 14.50' North of Centerline.
Elev. = 1335.29 (NGVD 29)

BM #2: Small RR spike in 3rd PP West of Hoover St. on the North side of 45th St. N.
Elev. = 1337.68

Scale: 1" = 20'



Note: Remove Trees ONLY as Necessary for Roadway Construction and with the Engineers Approval. Cost to be included in Bid Item "Site Clearing and Restoration"

Note: Contractor to Remove and Reset Mail Boxes as Required. Contact Owner Prior to Removal. Cost to be INCIDENTAL to the Project. See General Notes.

Note:
Trees/Shrubs to be removed are marked thus:

Drawing File: E:\Edgewater_45th Street Improvement\Land\dwg\base.dwg

Design: TCA
Drawn: TCA
Approved: JFB
Scale: 1:20

Project No. 0808E183 CAPITAL IMPROVEMENT PROJECT
45TH STREET PAVING
CIMARRON STREET TO HOOVER STREET

Baughman Company, P.A.
315 Ellis St. Wichita, KS 67211 P 316-262-7271 F 316-262-0149
ENGINEERING | SURVEYING | PLANNING | LANDSCAPE ARCHITECTURE

OCTOBER, 2008
SHEET 5 OF 19