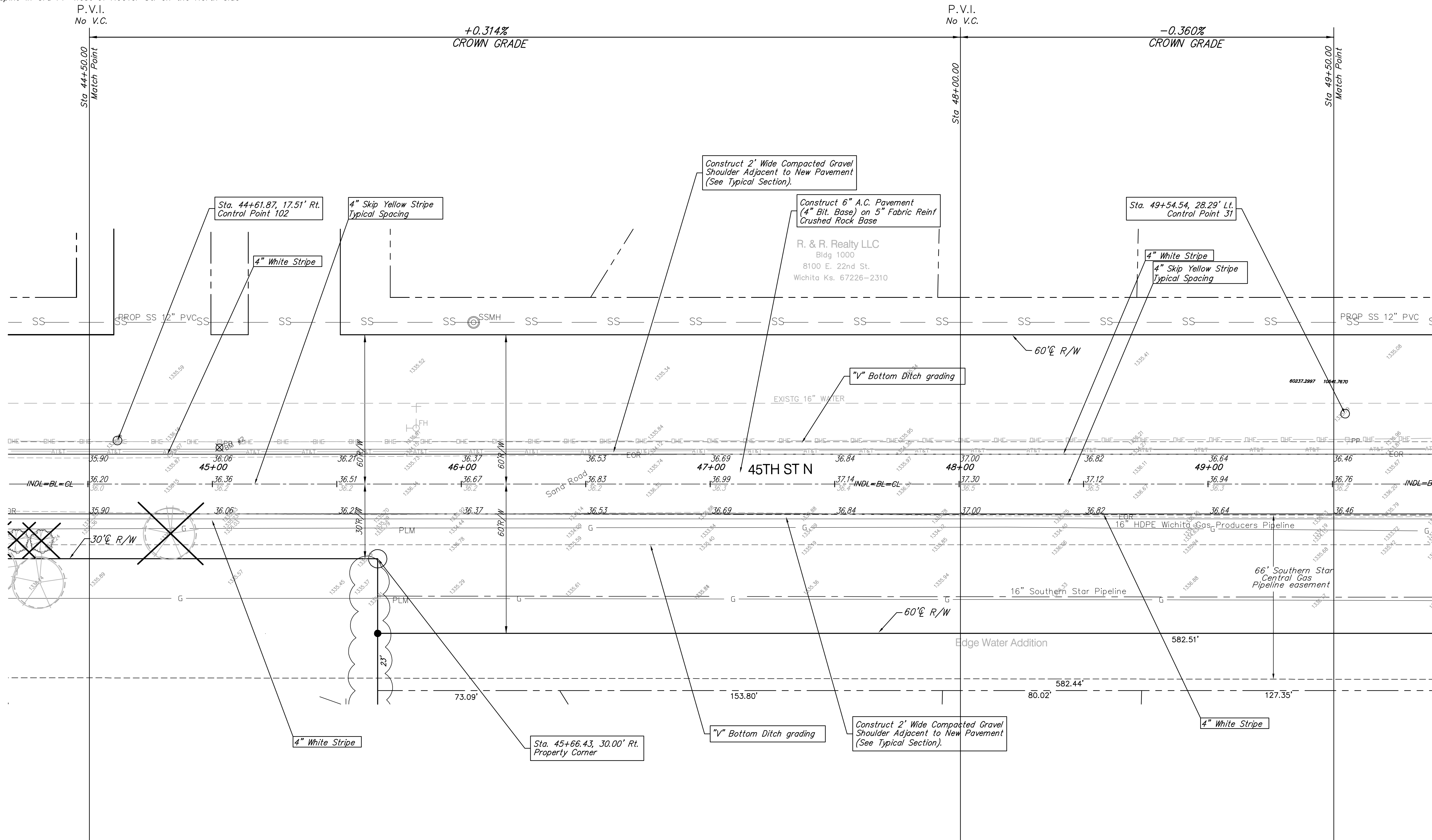
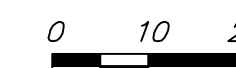


Benchmarks

BM #1: Hoover and 45th St. North - COW Benchmark at NE Corner of Intersection, 10.20' SSE of PP, 58.80' ESE of PP on NW corner, 85.50' NE of gas line marker, 59.00' North of gas line marker, 28.50' East of Centerline, 14.50' North of Centerline.
Elev. = 1335.29 (NGVD 29)

BM #2: Small RR spike in 3rd PP West of Hoover St. on the North side of 45th St. N.
Elev. = 1337.68

Scale: 1" = 20'



Note:
Trees/Shrubs to be removed are marked thus:

Drawing File: E:\EdgeWater_45th Street Improvement\Land\dwg\base.dwg
Project No. 0808E183 CAPITAL IMPROVEMENT PROJECT
Design: TCA
Drawn: TCA
Approved: JFB
Scale: 1:20

45TH STREET PAVING
CIMARRON STREET TO HOOVER STREET

Baughman Baughman Company, P.A.
315 Ellis St. Wichita, KS 67211 P 316-262-7271 F 316-262-0149
ENGINEERING | SURVEYING | PLANNING | LANDSCAPE ARCHITECTURE

OCTOBER, 2008
SHEET 6 OF 19