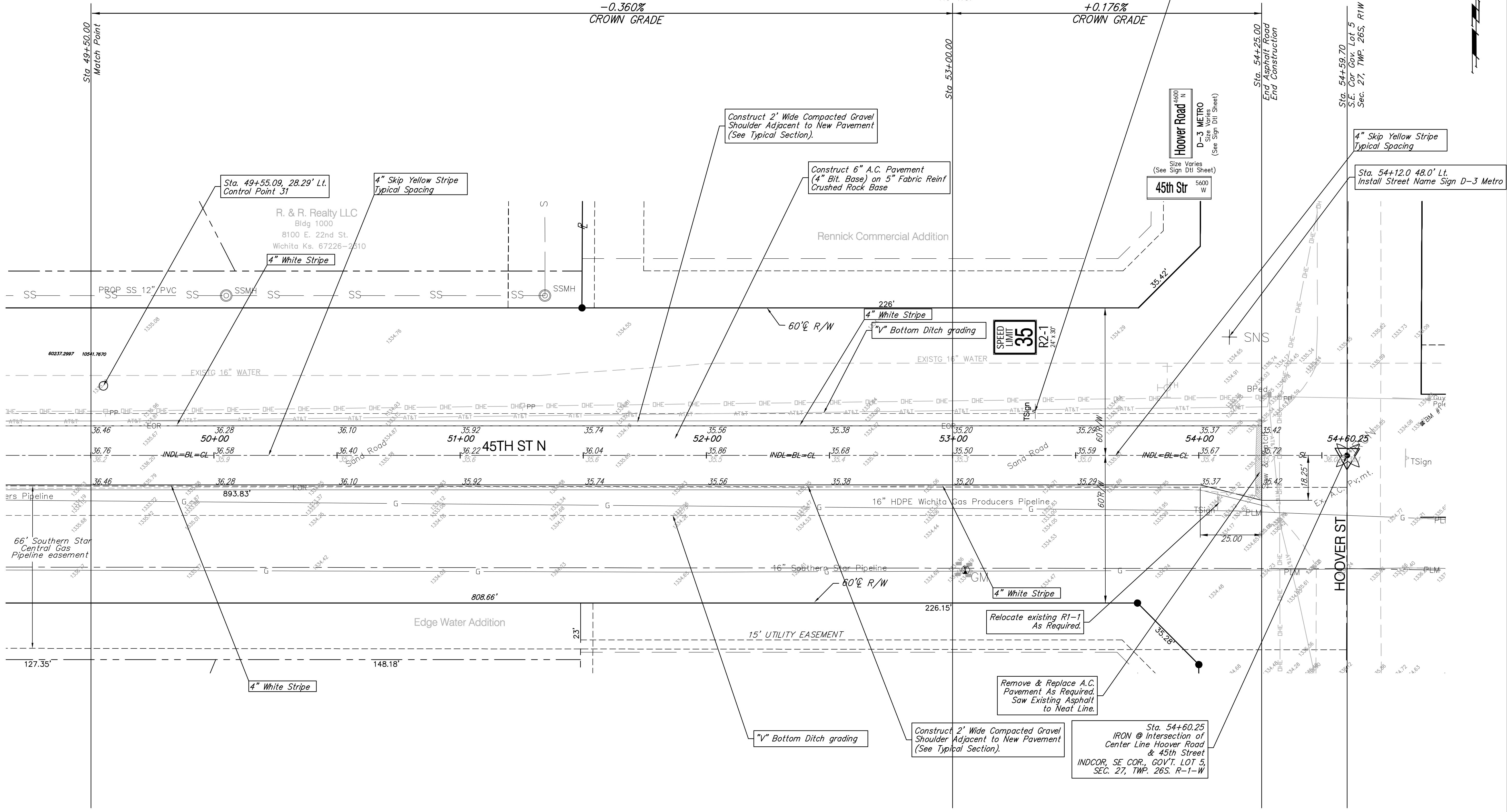
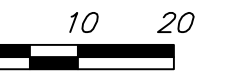


Benchmarks

BM #1: Hoover and 45th St. North - COW Benchmark at NE Corner of Intersection, 10.20' SSE of PP, 58.80' ESE of PP on NW corner, 85.50' NE of gas line marker, 59.00' North of gas line marker, 28.50' East of Centerline, 14.50' North of Centerline.
Elev. = 1335.29 (NGVD 29)

BM #2: Small RR spike in 3rd PP West of Hoover St. on the North side of 45th St. N.
Elev. = 1337.68

Scale: 1" = 20'



Drawing File: E:\Edgewater_45th Street Improvement\Land\dwg\base.dwg

| | | |
|---------------|----------------------------------|-----------------------------|
| Design: TCA | Project No. 0808E183 | CAPITAL IMPROVEMENT PROJECT |
| Drawn: TCA | 45TH STREET PAVING | |
| Approved: JFB | CIMARRON STREET TO HOOVER STREET | |
| Scale: 1:20 | PROJECT DESCRIPTION | |

Baughman **Baughman Company, P.A.**
 315 Ellis St. Wichita, KS 67211 P 316-262-7271 F 316-262-0149
 ENGINEERING | SURVEYING | PLANNING | LANDSCAPE ARCHITECTURE