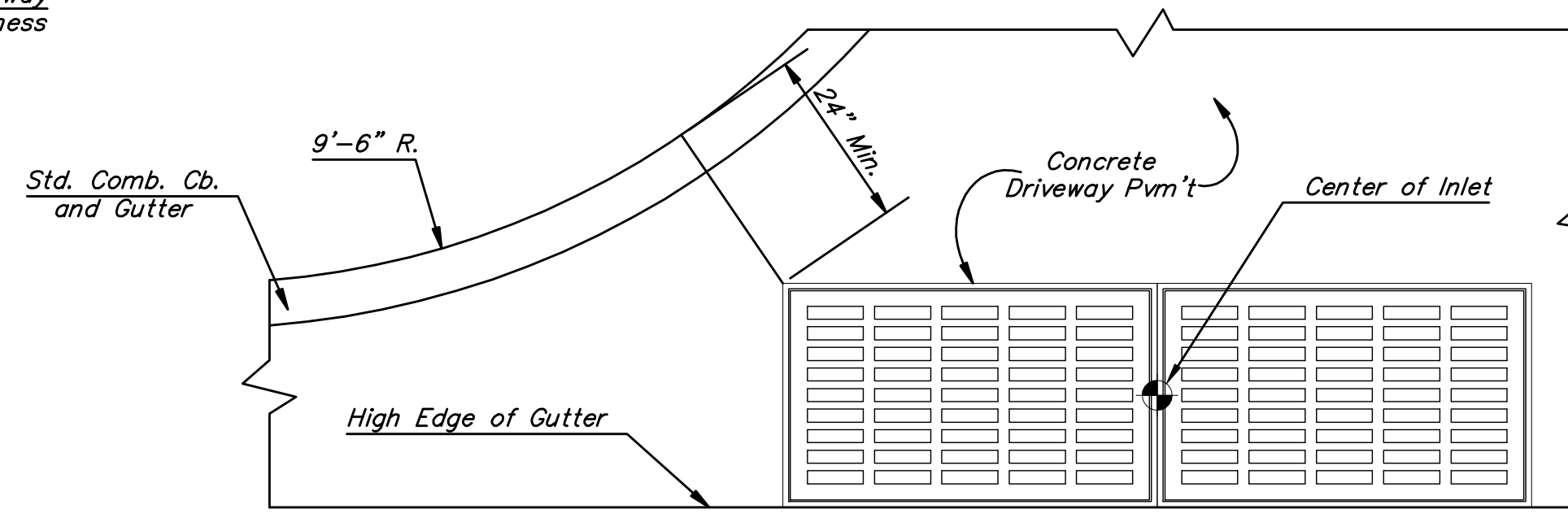


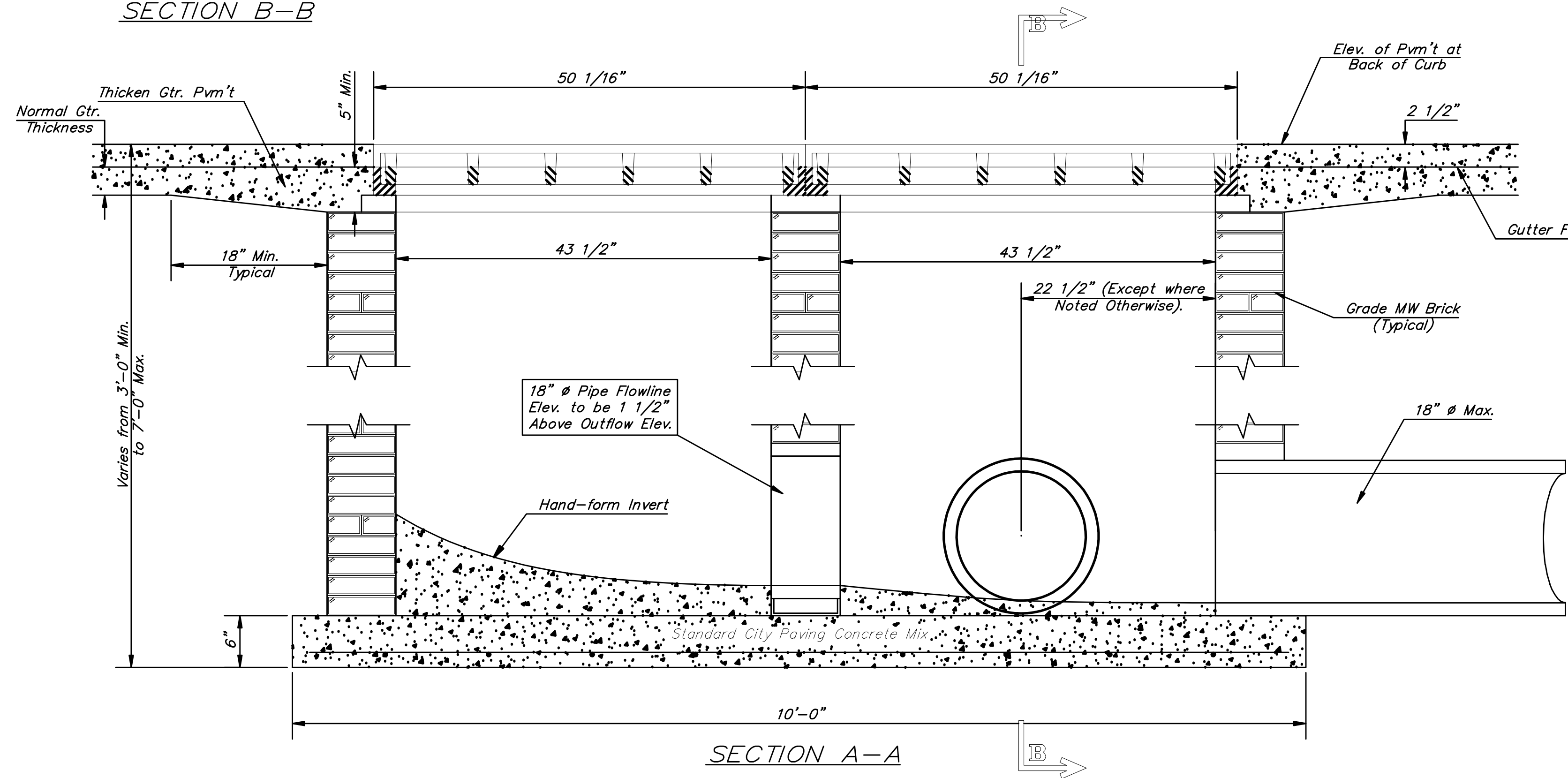
SECTION B-B



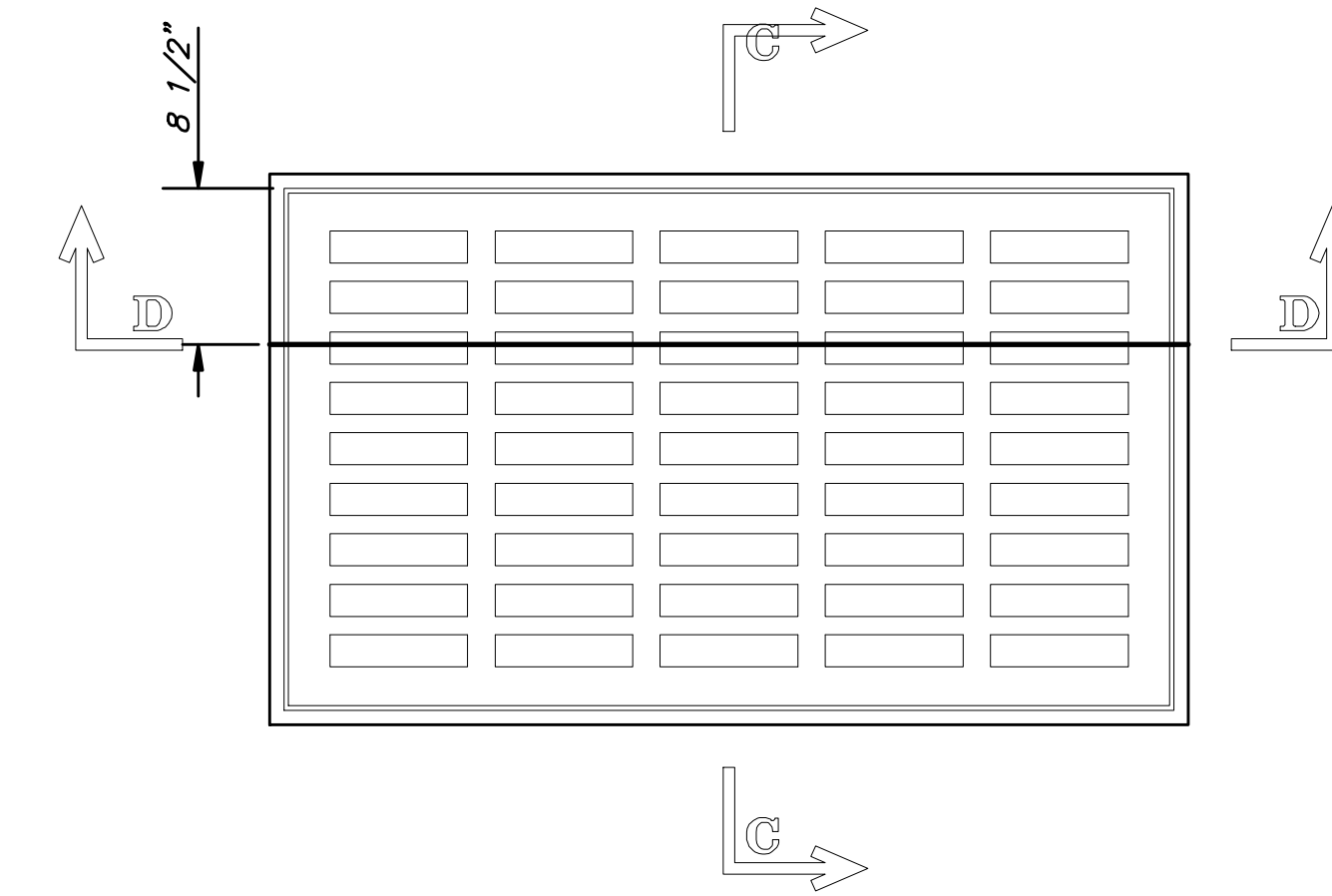
PLAN

GENERAL NOTES

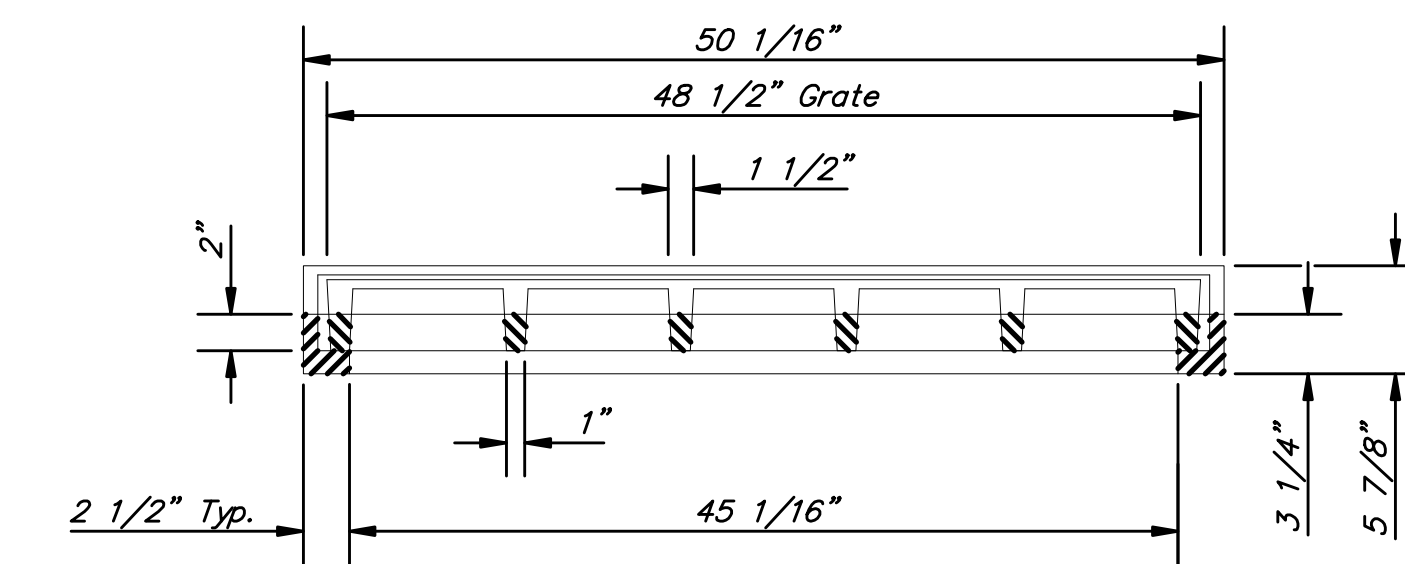
1. Grate frames to be installed on thin mortar cushion to insure full support along brick walls. Concrete used for inlet construction shall be concrete pavement mix.
2. Inlet invert shall be shaped with 8 sack sand mix concrete to create flow channels and to increase hydraulic efficiency such that the inlet will be self cleaning between all inlet and/or outlet pipes.
3. The ends of all pipes installed in inlets shall be cut off flush with the inside face of the inlet wall.
4. Inlet Frames and Grates to be two (2) Deeter #2095 or approved equal.



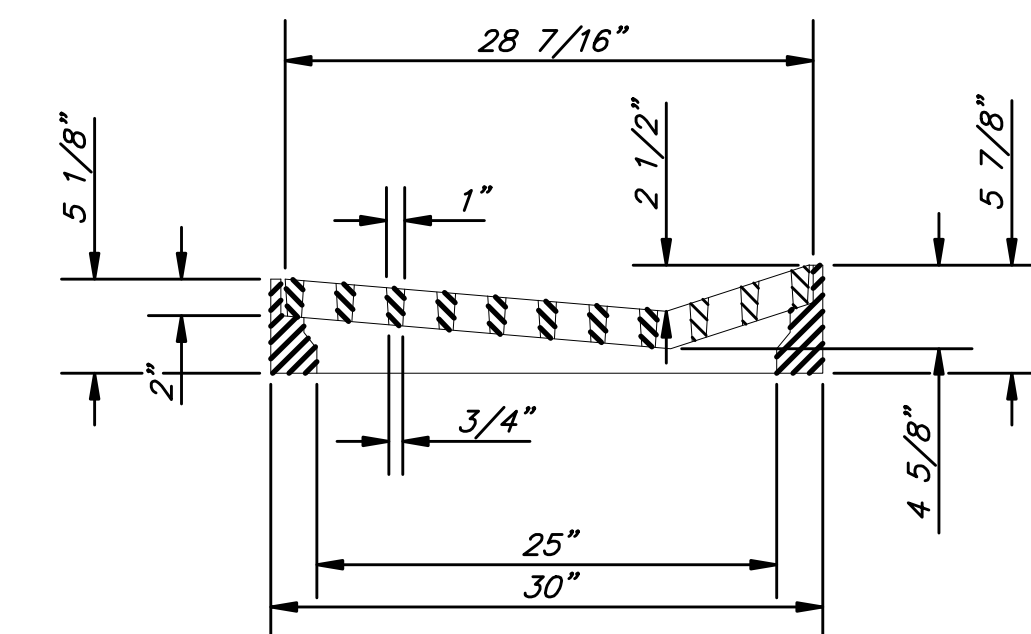
SECTION A-A



PLAN



SECTION D-D



SECTION C-C

DEETER #2095 FRAME & GRATE

TOTAL WEIGHT: 705 lbs.
(2 Each Required)

THE CITY OF WICHITA

 CITY ENGINEER'S OFFICE
 CITY HALL - SEVENTH FLOOR
 405 NORTH MAIN STREET
 WICHITA, KANSAS 67202
 (316) 268-4501
 (316) 268-4114 FAX

DRIVEWAY
 GRATED INLET
 DOUBLE

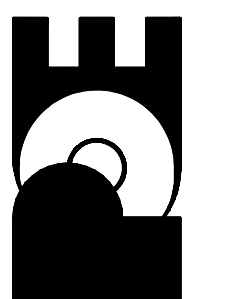
JAMES L. ARMOUR, P.E. - CITY ENGINEER

PROJECT NUMBER 472-85471	INDEX CODE 766166
DATE MAR 96	SHEET 13 OF 37

No.	Date	By	Approved	Revision

PARKSTONE ADDITION
 STREET IMPROVEMENTS
 DRIVE INLET/HAY BALE SEDIMENT BARRIER
 CITY OF WICHITA, KANSAS
 JAMES L. ARMOUR, P.E. - CITY ENGINEER
 Private Project # 472-85471 O.C.A. # 766166

POE & ASSOCIATES, INC.
 CONSULTING ENGINEERS
 5940 E. Central, Suite 200 • Wichita, KS 67208-0242
 Phone 316/685-4114 • FAX 316/685-4444



FINAL

Designed By: S. Schmidt/J. Ubert
 Drawn By: A. Moss
 P.O. Job No.: 1879A
 Date: September 2008