

# BRIDGE PLANS TO SERVE THE MOORINGS TENTH ADDITION

AN ADDITION TO THE CITY OF WICHITA  
SEDGWICK COUNTY, KANSAS  
JAMES L. ARMOUR, P.E., CITY ENGINEER

PROJECT NO. 472-84643  
OCA NO. 766201

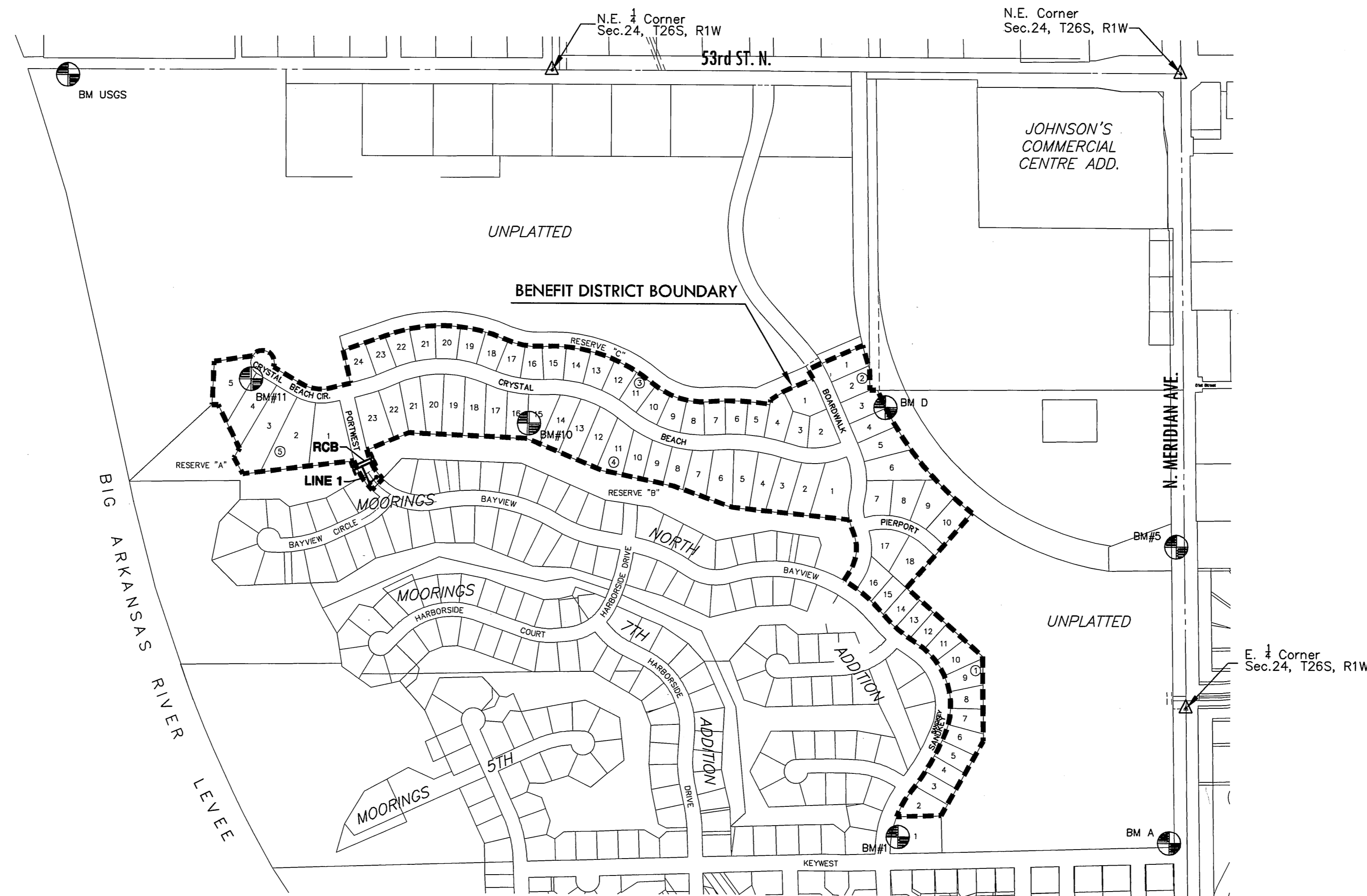
## GENERAL NOTES

1. UNLESS SHOWN OR OTHERWISE STATED ON THESE DRAWINGS, MATERIALS AND CONSTRUCTION SHALL BE IN ACCORDANCE WITH THE CITY OF WICHITA STANDARD SPECIFICATIONS.
2. THE TOPS OF INLETS AND MANHOLES AS NOTED ON THE PLANS MAY VARY SO AS TO MEET PROPOSED TOP OF CURB ELEVATIONS OR PAVEMENT ELEVATIONS. THE FIELD ENGINEER SHALL LOCATE INLETS AND MANHOLES WITH REFERENCE TO PROPOSED PAVING PLANS OF THE PERTINENT STREETS.
3. ALL CONCRETE SHALL BE STANDARD PAVING MIX UNLESS OTHERWISE NOTED.
4. THE CONTRACTOR SHALL BE RESPONSIBLE FOR PRESERVING PROPERTY IRONS. THE CONTRACTOR SHALL BE REQUIRED TO RE-ESTABLISH ANY PROPERTY IRONS WHICH ARE DAMAGED OR DESTROYED BY HIS CONSTRUCTION OPERATIONS. SUCH IRONS SHALL BE RE-ESTABLISHED BY A LICENSED LAND SURVEYOR IN ACCORDANCE WITH STATE LAWS.
5. TREES TO BE REMOVED ARE MARKED ALL TREES WHICH IN THE OPINION OF THE FIELD ENGINEER CAN BE SAVED, SHALL BE SAVED.
6. CONTRACTOR SHALL NOTIFY UTILITY COMPANIES OF CONSTRUCTION SCHEDULING.
7. EXISTING UTILITIES AND THEIR LOCATIONS, AS SHOWN ON THE PLANS REPRESENT THE BEST INFORMATION OBTAINABLE FOR DESIGN. LOCATION INFORMATION HAS BEEN OBTAINED FROM THE VARIOUS COMPANIES AND IS EITHER FROM COMPANY UTILITY DRAWINGS OR COMPANY PROVIDED FIELD LOCATIONS. THE PLAN LOCATIONS SHOWN ARE NOT GUARANTEED. ADDITIONAL EXISTING UTILITIES MAY ALSO BE ENCOUNTERED.
8. CONTRACTOR WILL BE REQUIRED TO PROVIDE A MINIMUM ADVANCE NOTICE OF SEVENTY-TWO (72) HOURS TO UTILITY COMPANIES TO STARTING ANY EXCAVATION AS FOLLOWS:  
  

KANSAS ONE-CALL	800-344-7233
OR LOCAL WICHITA	687-2470

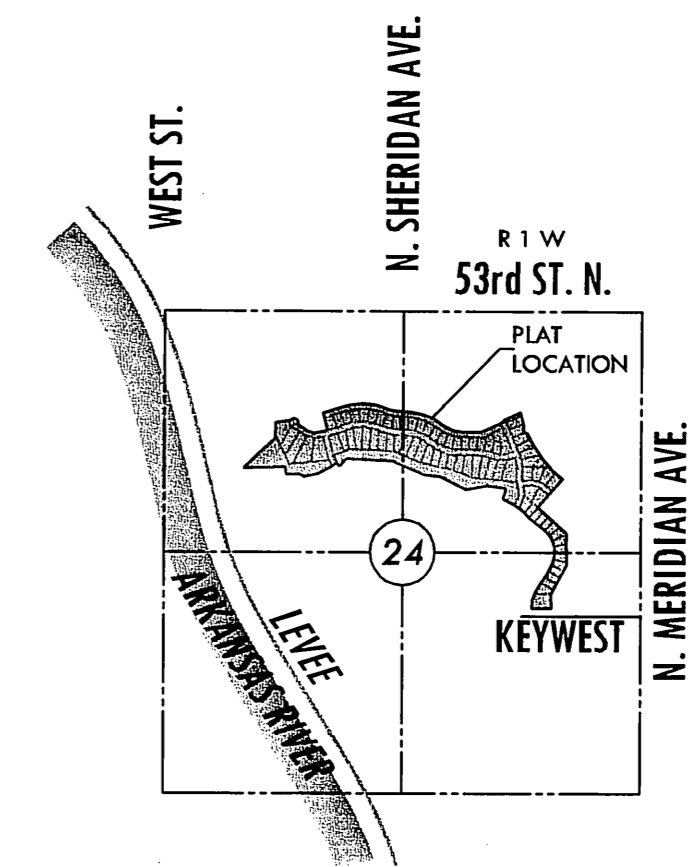
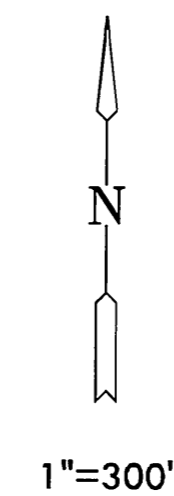
THE CONTRACTOR MUST NOTIFY THE FOLLOWING IN CASE OF EMERGENCY:

COX COMMUNICATIONS (CABLE)	262-0661
WESTAR (ELECTRIC)	261-6512
KANSAS GAS SERVICE (GAS)	832-3101
SBC (TELEPHONE)	800-870-8390
CITY OF WICHITA WATER & SEWER	262-6000
AQUILA (GAS)	800-303-0357
9. RUBBLE FROM THE REMOVAL OF MISCELLANEOUS STRUCTURES AND EXCESS EXCAVATION WHICH IS TO BE WASTED SHALL BE DISPOSED OF ON SITES TO BE PROVIDED BY THE CONTRACTOR. THESE SITES SHALL BE APPROVED BY THE ENGINEER AS TO SUITABILITY, APPEARANCE AND SITE LOCATION. LOCATIONS THAT, IN THE OPINION OF THE ENGINEER, WILL LEAVE AN UNSIGHTLY APPEARANCE WILL NOT BE APPROVED. ALL DISPOSAL SITES MUST BE APPROVED BY THE KANSAS DEPARTMENT OF HEALTH AND ENVIRONMENT. MATERIAL EITHER STOCKPILED OR DISPOSED OF IN A FLOOD PLAIN WOULD REQUIRE A KANSAS STATE BOARD OF AGRICULTURE PERMIT. ANY MATERIAL DUMPED IN WATERS OF THE UNITED STATES OR WETLANDS IS SUBJECT TO U.S. CORPS OF ENGINEERS PERMITTING REGULATIONS. ANY MATERIAL BURIED OR STOCKPILED BEYOND APPROVED CONSTRUCTION LIMITS WOULD REQUIRE ADDITIONAL ARCHAEOLOGICAL INVESTIGATIONS UNLESS BURIED IN A PREVIOUSLY APPROVED BORROW LOCATION.
10. OTHER CONSTRUCTION MAY BE UNDER WAY SIMULTANEOUSLY WITH THIS PROJECT. THE CONTRACTOR SHALL COORDINATE WITH ANY CONTRACTORS CONSTRUCTING OTHER PORTIONS OF THE PROJECT.



EARTHWORK SUMMARY	
EXCAVATION	500 C.Y.
ON-SITE BORROW	4540 C.Y.
COMP FILL (95%)	4200 C.Y.

\* COMPACTION FACTOR ADDED TO EARTHWORK VOLUMES



VICINITY MAP

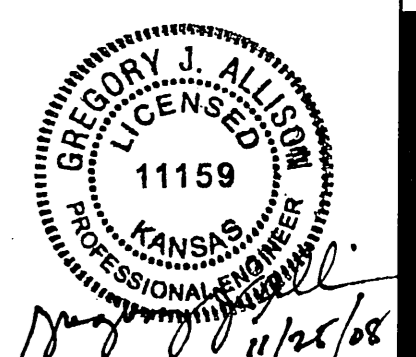
## INDEX TO DRAWINGS

SHEET NO.	DESCRIPTION
1	TITLE SHEET
2-3	RCB & LINE 1
4	GRADING PLAN
5	RCB DETAILS
6	INLET DETAILS
7	BUBBLE MAP
8-12	BMP DETAILS
13-14	FINAL PLAT

## BENCHMARKS

BM USGS	USGS gauging station top wall at southeast corner bridge 53rd and Arkansas River; being 29 feet south and 146 feet east of NW corner of the NW corner of Sec. 24, T26S, R1W line of Section Elev.=1353.025 (NDVD 29)
BM A	City of Wichita disc northwest corner of Meridian and Keywest Elev. = 1329.36 (NGVD 29)
BM #1	T-post 66 feet south of the northwest corner of Reserve "E" lying 21.7 feet E. of back of curb. Elev. = 1330.76 (NGVD 29)
BM D	T-post 2.8 feet south of the NE. corner of Lot 4, Block 2. Elev. = 1329.02 (NGVD 29)
BM #5	Square cut at SW. corner of RCB; 46' feet west of centerline of Meridian Ave. and 668' N. of the E. 1/4 corner, Sec. 24, T26S, R1W. Elev. = 1328.19 (NGVD 29)
BM #5	T-post S. of the NW. corner of Lot 4, Block 5, being 29 feet S. of the back of curb. Elev.=1333.635 (NDVD 29)
BM #5	T-post 100.5 feet S. of the NW. corner of Lot 15, Block 4, being 2.0 feet E. of the east line of said Lot 15. Elev.=1332.075 (NDVD 29)

**MKEC**  
ENGINEERING  
CONSULTANTS, INC.  
411 N. WEBB ROAD  
WICHITA, KS. 67206  
316 - 684 - 9600



BRIDGE PLANS FOR  
THE MOORINGS TENTH ADDITION

## TITLE SHEET

SHEET TITLE  
**472-84643**  
PROJECT NUMBER

DFL / DMU / GJA  
DESIGNED / DRAWN / CHECKED

ISSUED  
*November 2008*

REVISED

SHEET NO.

1 of 14