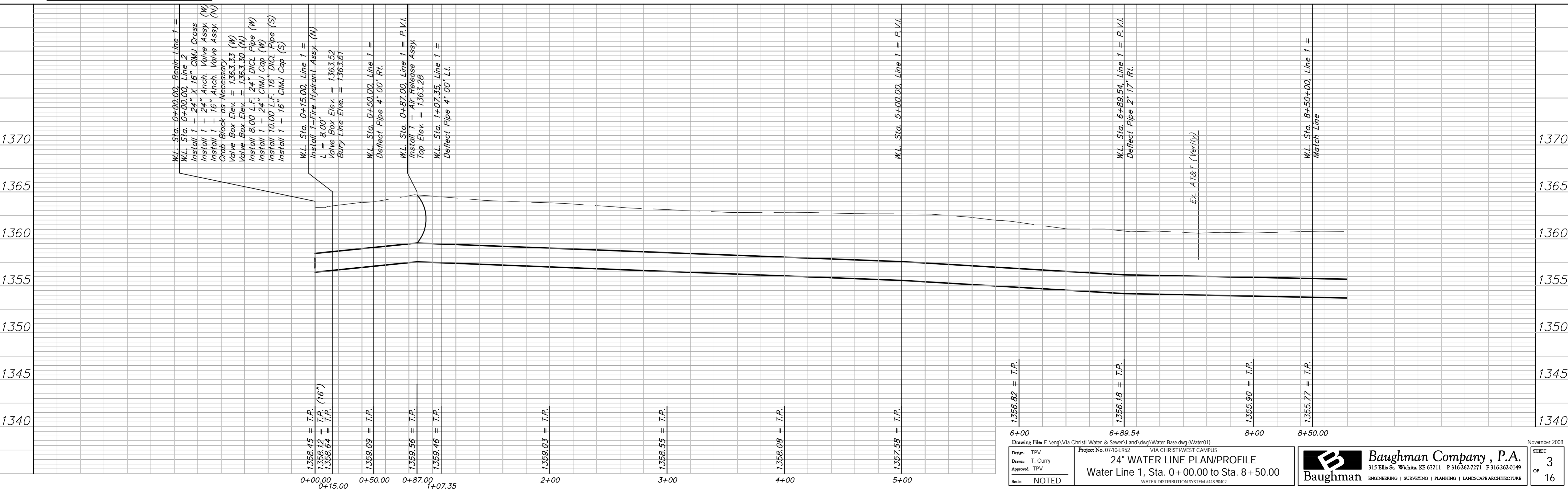
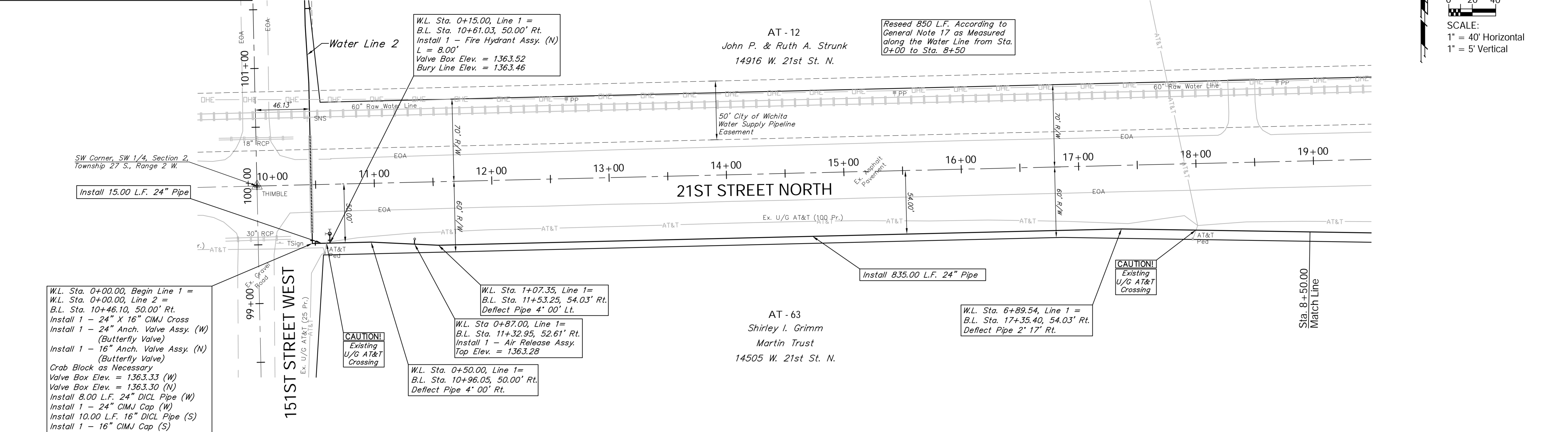


**BENCHMARK:**  
 BM #1 - 3/4" Iron with Sedgwick County Cap set in concrete,  
 located in the center of the 21st Street & 151st  
 Street intersection  
 B.L. Sta. 10+00.00  
 Elev. = 1367.00 (NGVD 88)

0 20 40  
 SCALE:  
 1" = 40' Horizontal  
 1" = 5' Vertical



Drawing File: E:\eng\Via Christi Water & Sewer\Land\dwg\Water Base.dwg (Water01) Project No. 0710E952 VIA CHRISTI WEST CAMPUS		November 2008
Design: TPV Drawn: T. Curry Approved: TPV Scale: NOTED		<b>24" WATER LINE PLAN/PROFILE</b> Water Line 1, Sta. 0+00.00 to Sta. 8+50.00 <small>WATER DISTRIBUTION SYSTEM #448-90402</small>
		SHEET <b>3</b> OF <b>16</b>