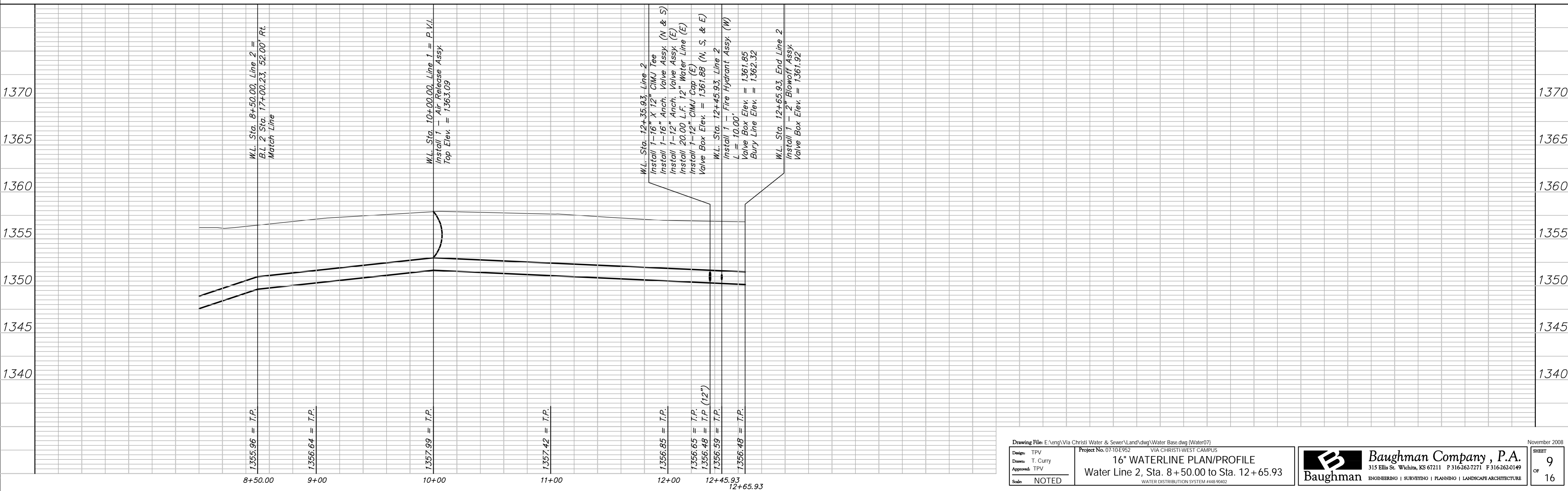
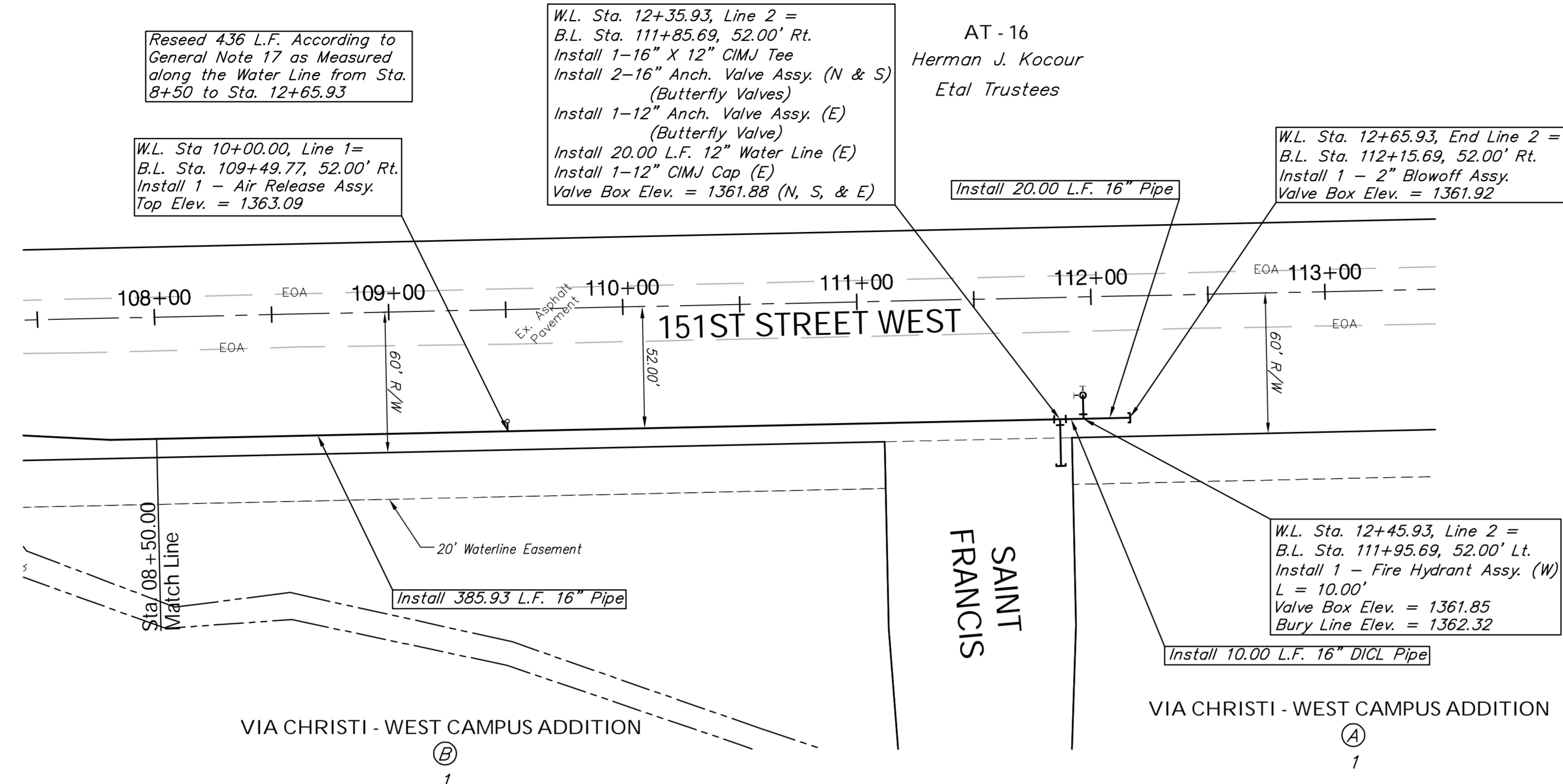
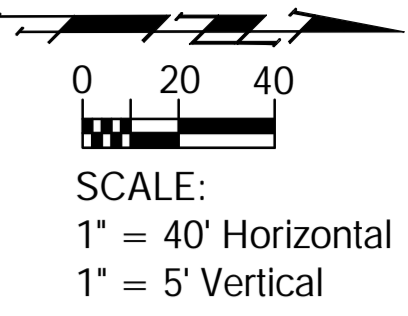


BENCHMARK:
 BM #1 - 3/4" Iron with Sedgwick County Cap set in concrete,
 located in the center of the 21st Street & 151st
 Street intersection
 B.L. Sta. 10+00.00
 Elev. = 1367.00 (NGVD 88)



Drawing File: E:\eng\Via Christi Water & Sewer\Land\dwg\Water Base.dwg (Water07)
 Project No. 0710E952 VIA CHRISTI WEST CAMPUS
16" WATERLINE PLAN/PROFILE
 Water Line 2, Sta. 8+50.00 to Sta. 12+65.93
 Scale: NOTED

Baughman Company, P.A.
 315 Ellis St., Wichita, KS 67211 P 316-262-7171 F 316-262-0149
 ENGINEERING | SURVEYING | PLANNING | LANDSCAPE ARCHITECTURE

November 2008
 SHEET 9 OF 16