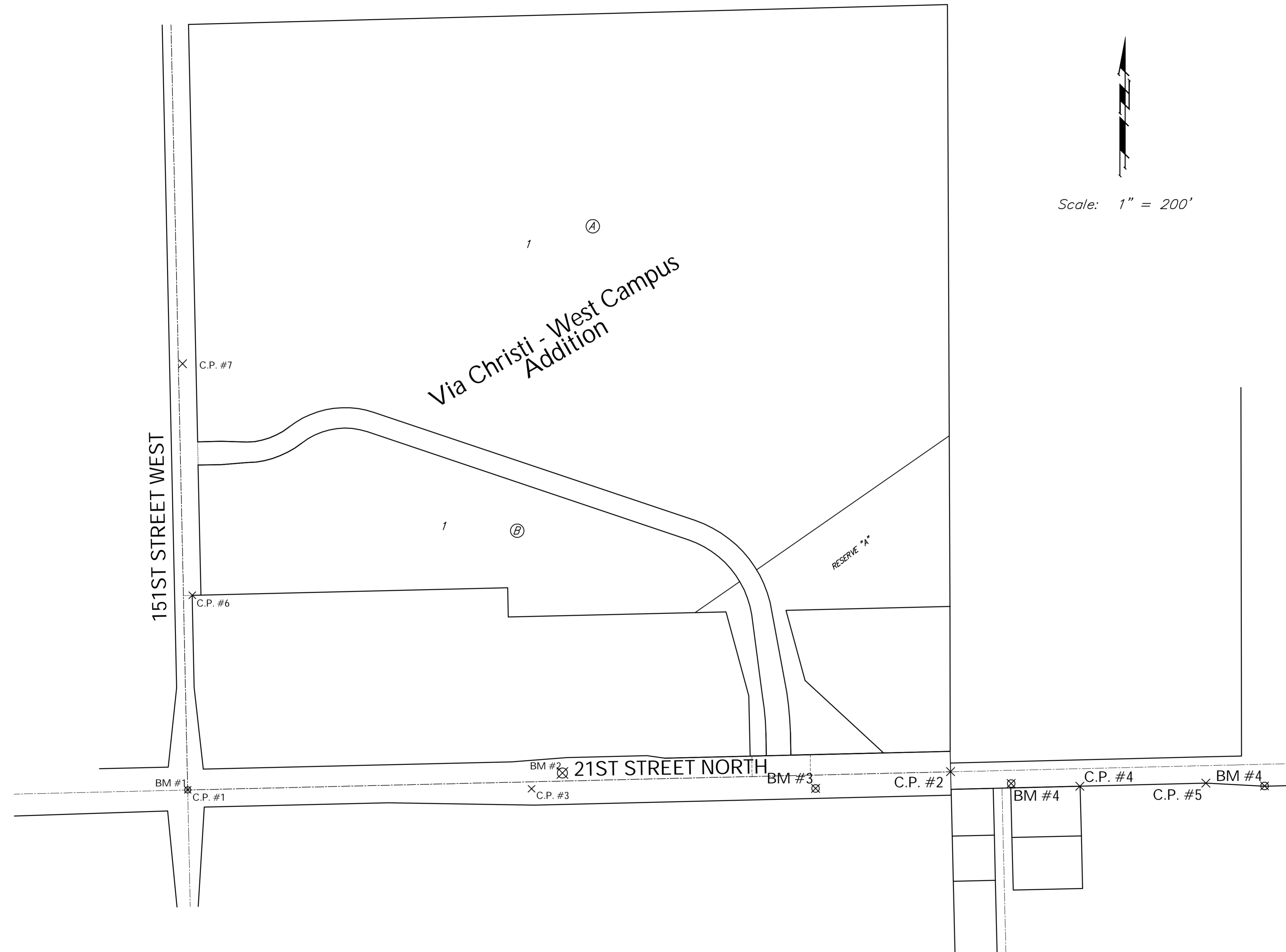


CONTROL POINTS

C.P. #	Northing	Easting	Description
1	10000.00	20000.00	SW Corner Section 2, T 27-S, R 2-W
2	10062.29	22611.34	SW Corner of SE ¼ of Section 2, T 27-S, R 2-W
3	10003.78	21176.98	Nail in Field Entrance Near Edge of Asphalt
4	10018.73	23054.14	Property Iron w/ Baughman Cap
5	10023.49	23485.17	Property Iron w/ Baughman Cap
6	10666.13	20015.51	#4 Rebar Property Iron
7	11458.69	19982.23	Mag Nail in East Edge of Asphalt of 151st St. West



Scale: 1" = 200'

Benchmarks

*BM #1: 3/4" Iron with Sedgwick County Cap set in concrete, located in the center of the 21st Street & 151st Street intersection
B.L. Sta. 10+00.00
Elev. = 1367.00 (NGVD 88)*

*BM #2: Square cut "⊠" on Northwest wingwall of the 21st St. N bridge over Dry Creek.
Sta. 22+83.63, 27.29' Lt.
Elev. = 1335.26 (NGVD 88)*

*BM #3: Square cut "⊠" on South headwall of RCBC under 21st Street North
Sta. 31+49, 46.3' Rt.
Elev. = 1358.31 (NGVD 88)*

*BM #4: Square cut "⊠" on concrete base of "N Sunrise Ave" street sign south of 21st St. N
Sta. 38+11, 53.3' Rt.
Elev. = 1333.68 (NGVD 88)*

*BM #5: Top of Rebar in 4x4 Right-of-way Monument, south of 21st St. N.
Sta. 46+85.5, 75.0' Rt.
Elev. = 1364.53 (NGVD 88)*

Drawing File: E:\eng\Via Christi Water & Sewer\Land\dwg\Water Base.dwg (Control Points)

Design: TPV
Drawn: T. Curry
Approved: TPV
Scale: NOTED

Project No. 0710E952 VIA CHRISTI WEST CAMPUS

COORDINATE SHEET

WATER DISTRIBUTION SYSTEM #448-90402

Baughman Company, P.A.
315 Ellis St. Wichita, KS 67211 P 316-262-7271 F 316-262-0149
ENGINEERING | SURVEYING | PLANNING | LANDSCAPE ARCHITECTURE

November 2008

SHEET
15
OF
16