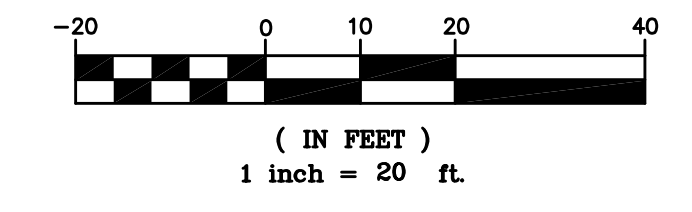


GRAPHIC SCALE



UTILITY LEGEND

- = Fire Hydrant
- = Water Meter
- = Water Valve
- = Gas Meter
- = Gas Valve
- = Telephone Riser
- = Mailbox
- = Flag Pole
- = SS Manhole
- = SWS Manhole
- = Sign
- = Misc. Post
- = Guy Anchor
- = Power Pole
- = Light Pole
- = Deciduous Tree or Shrub
- = Existing Fence
- = Right of Way Line
- = Underground Telephone
- = Underground Electric
- = Overhead Electric
- = Water Line
- = Sanitary Sewer
- = Kansas Gas Line
- = Cable TV or Fiber Optic

- Proposed 5" A.C. Pavement on 5" Crushed Rock Base
- Proposed Concrete Curb & Gutter / Concrete Drive Entrance
- Exist. Road Gravel To Be Removed
- Propose Pavement Removal
- Propose Driveway Grading (Exist. Gravel To Be Saved & Relayed After Grading.)

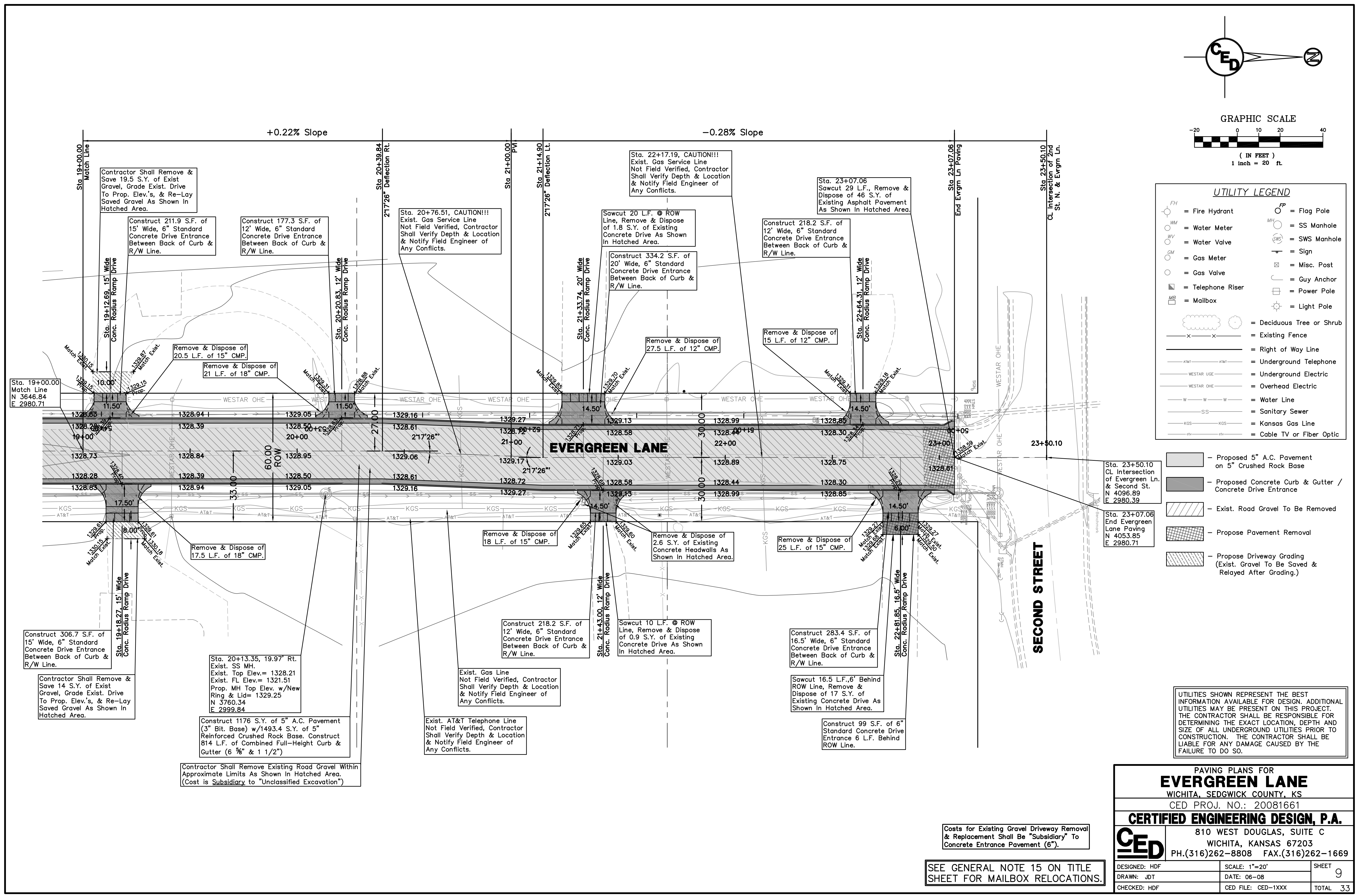
UTILITIES SHOWN REPRESENT THE BEST INFORMATION AVAILABLE FOR DESIGN. ADDITIONAL UTILITIES MAY BE PRESENT ON THIS PROJECT. THE CONTRACTOR SHALL BE RESPONSIBLE FOR DETERMINING THE EXACT LOCATION, DEPTH AND SIZE OF ALL UNDERGROUND UTILITIES PRIOR TO CONSTRUCTION. THE CONTRACTOR SHALL BE LIABLE FOR ANY DAMAGE CAUSED BY THE FAILURE TO DO SO.

PAVING PLANS FOR  
**EVERGREEN LANE**  
 WICHITA, SEDGWICK COUNTY, KS  
 CED PROJ. NO.: 20081661  
**CERTIFIED ENGINEERING DESIGN, P.A.**  
 810 WEST DOUGLAS, SUITE C  
 WICHITA, KANSAS 67203  
 PH.(316)262-8808 FAX.(316)262-1669

DESIGNED: HDF	SCALE: 1"=20'	SHEET 9
DRAWN: JDT	DATE: 06-08	TOTAL 33
CHECKED: HDF	CED FILE: CED-1XXX	

SEE GENERAL NOTE 15 ON TITLE SHEET FOR MAILBOX RELOCATIONS.

Costs for Existing Gravel Driveway Removal & Replacement Shall Be "Subsidiary" To Concrete Entrance Pavement (6").



S:\Working\Draws and Reports\1501\1501.dwg (1501) - 11/28/2008 4:18:31 PM, 27' x 35', 22X85